

CITY OF MOUNT PLEASANT, TX
&
REGIONAL
SALES TAX & EMPLOYMENT
MONTHLY UPDATE



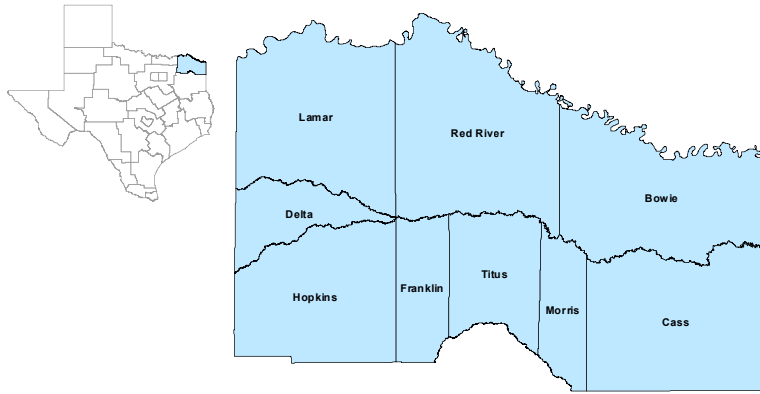
www.mpedc.org

903.572.6602

Updated on: 10/30/2024

Northeast Texas Workforce Development Area

September 2024



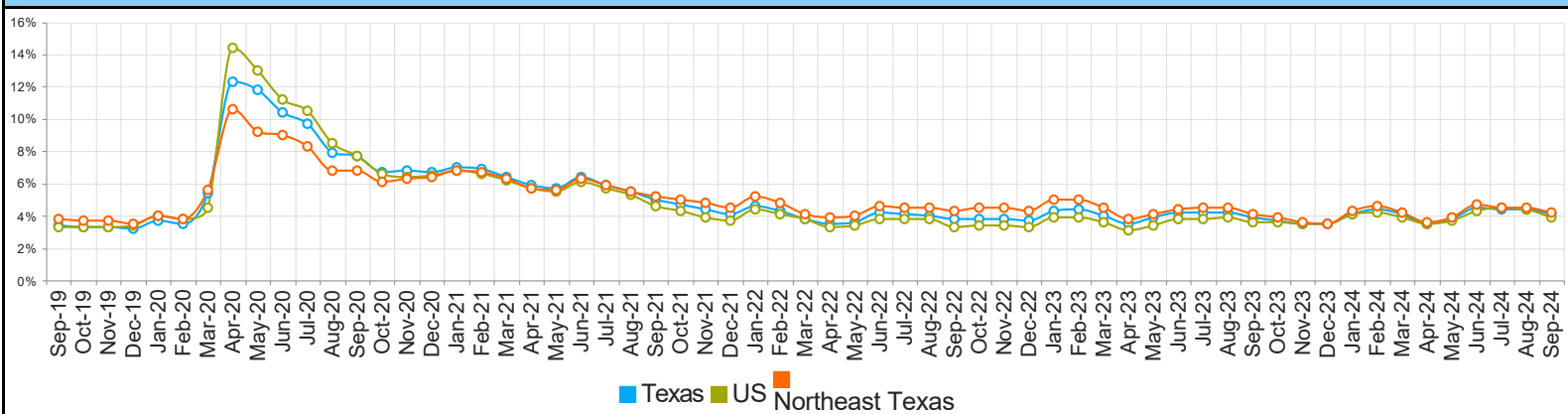
WDA Labor Force Statistics				
	Sep-24	Aug-24	Sep-23	Yearly Change
Civilian Labor Force	126,575	126,183	124,561	2,014
Employed	121,305	120,460	119,422	1,883
Unemployed	5,270	5,723	5,139	131
Unemployment Rate	4.2%	4.5%	4.1%	0.1%

Texas Labor Force Statistics				
	Sep-24	Aug-24	Sep-23	Yearly Change
Civilian Labor Force	15,553,143	15,487,654	15,127,091	426,052
Employed	14,920,058	14,810,843	14,529,891	390,167
Unemployed	633,085	676,811	597,200	35,885
Unemployment Rate	4.1%	4.4%	3.9%	0.2%

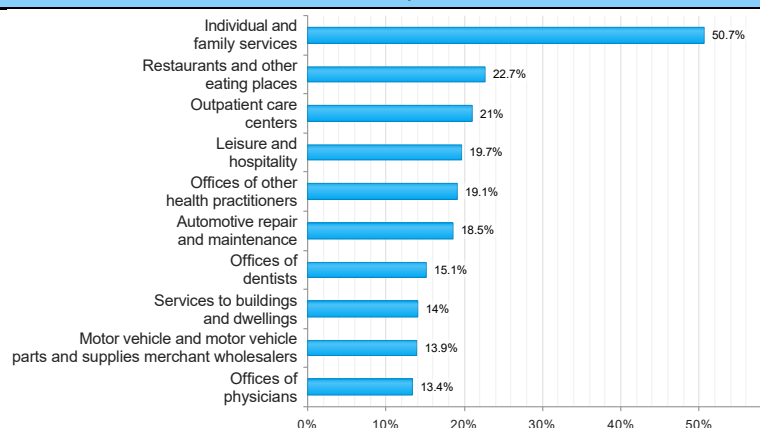
US Labor Force Statistics				
	Sep-24	Aug-24	Sep-23	Yearly Change
Civilian Labor Force	168,569,000	168,763,000	167,718,000	851,000
Employed	162,046,000	161,348,000	161,669,000	377,000
Unemployed	6,524,000	7,415,000	6,049,000	475,000
Unemployment Rate	3.9%	4.4%	3.6%	0.3%

Continued Claims for the Week of the 12th				
	Sep-24	Aug-24	Sep-23	Yearly Change
WDA	697	749	716	-19
Texas	116,416	124,004	108,083	8,333

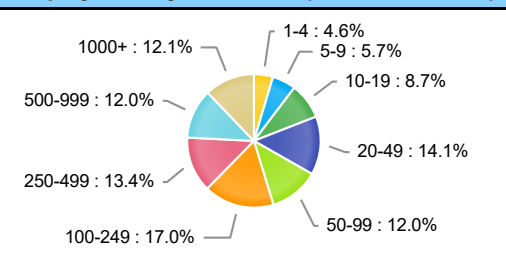
Historical Unemployment Rates



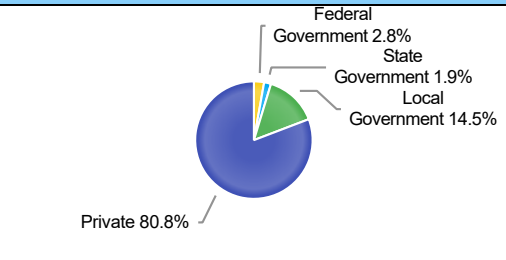
Projected Top Ten Fastest Growing Industries in WDA (% Growth 2022-2032)



Employment by Size Class (1st Quarter 2024)



Employment by Ownership (1st Quarter 2024)



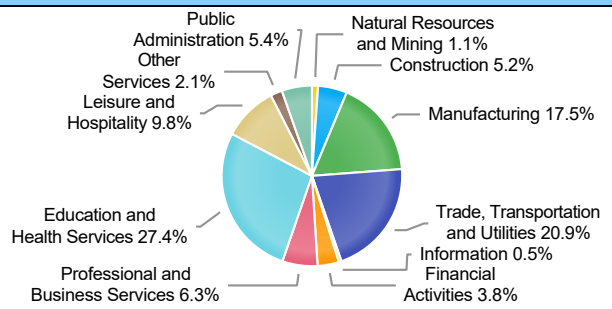
Average Weekly Wage (1st Quarter 2024)

	Q1 2024	Q4 2023	Q1 2023	Quarterly Change	Yearly Change
WDA	\$991	\$1,017	\$968	-\$26	\$23
Texas	\$1,540	\$1,427	\$1,480	\$113	\$60
US	\$1,527	\$1,435	\$1,465	\$92	\$62

Employment by Industry (1st Quarter 2024, Percent Change)

Industry	Employment	% of Total	% Quarterly Change	% Yearly Change
Natural Resources and Mining	1,203	1.1%	-4.4%	-6.4%
Construction	5,903	5.2%	-0.9%	2.6%
Manufacturing	19,857	17.5%	0.4%	4.3%
Trade, Transportation and Utilities	23,731	20.9%	-1.5%	1.1%
Information	585	0.5%	1.9%	2.6%
Financial Activities	4,335	3.8%	-0.6%	-1.4%
Professional and Business Services	7,199	6.3%	6.1%	4.3%
Education and Health Services	31,117	27.4%	-0.4%	-1.2%
Leisure and Hospitality	11,137	9.8%	-3.1%	1.3%
Other Services	2,416	2.1%	-0.5%	2.8%
Public Administration	6,133	5.4%	0.3%	0.9%

Employment by Industry (1st Quarter 2024)



CITY OF MOUNT PLEASANT, TX

City Sales and Use Tax Comparison Summary

City	Net Payment This Period	Comparable Payment Prior Year	% of Change	Payment YTD	Prior Year Payment YTD	% of Change
Mount Pleasant	\$758,143.42	\$726,585.02	4.34%	\$6,508,576.77	\$6,778,909.06	-3.98%
Daingerfield	\$51,869.36	\$50,077.31	3.57%	\$494,626.34	\$489,393.37	1.06%
Mount Vernon	\$115,803.97	\$121,160.91	-4.42%	\$917,301.83	\$910,264.32	0.77%
Paris	\$1,112,510.65	\$1,029,141.57	8.1%	\$9,787,416.66	\$9,393,986.46	4.18%
Pittsburg	\$114,174.07	\$118,221.43	-3.42%	\$1,142,419.06	\$1,244,033.88	-8.16%
Sulphur Springs	\$806,238.12	\$736,173.29	9.51%	\$6,918,109.18	\$6,631,458.96	4.32%

12-Month Mt. Pleasant Monthly Employment, Labor, Unemployment, & Unemployment Rate

P: Preliminary

Year	Month	Labor Force	Employment	Unemployment	Unemployment Rate
2024	Sept	14128(P)	13528(P)	600(P)	4.2(P)
2024	Aug	14028	13361	667	4.8
2024	July	14090	13390	700	5.0
2024	June	14115	13391	724	5.1
2024	May	13898	13322	576	4.1
2024	April	13875	13362	513	3.7
2024	Mar	13827	13199	628	4.5
2024	Feb	13782	13143	639	4.6
2024	Jan	13455	12858	597	4.4
2023	Dec	13606	13134	472	3.5
2023	Nov	14179	13705	474	3.3
2023	Oct	14090	13559	531	3.8

TEXARKANA LAUS

Area	Area Type	September-24				August-24				September-23			
		Labor Force	Employment	Unemployment	Rate	Labor Force	Employment	Unemployment	Rate	Labor Force	Employment	Unemployment	Rate
Bowie	County	39,117	37,446	1,671	4.3	39,005	37,215	1,790	4.6	38,513	36,930	1,583	4.1
Cass	County	12,238	11,637	601	4.9	12,202	11,549	653	5.4	12,070	11,504	566	4.7
Delta	County	2,551	2,450	101	4.0	2,536	2,422	114	4.5	2,527	2,417	110	4.4
Franklin	County	5,111	4,911	200	3.9	5,155	4,933	222	4.3	5,057	4,841	216	4.3
Hopkins	County	19,755	19,109	646	3.3	19,663	18,954	709	3.6	19,043	18,430	613	3.2
Lamar	County	24,041	23,103	938	3.9	23,999	22,972	1,027	4.3	23,935	22,956	979	4.1
Morris	County	4,702	4,419	283	6.0	4,655	4,361	294	6.3	4,605	4,331	274	6.0
Red River	County	4,932	4,702	230	4.7	4,940	4,693	247	5.0	4,987	4,747	240	4.8
Titus	County	14,128	13,528	600	4.2	14,028	13,361	667	4.8	13,824	13,266	558	4.0
Paris	City	11,548	11,046	502	4.3	11,544	10,983	561	4.9	11,475	10,975	500	4.4
Texarkana	City	15,009	14,302	707	4.7	14,963	14,214	749	5.0	14,726	14,105	621	4.2

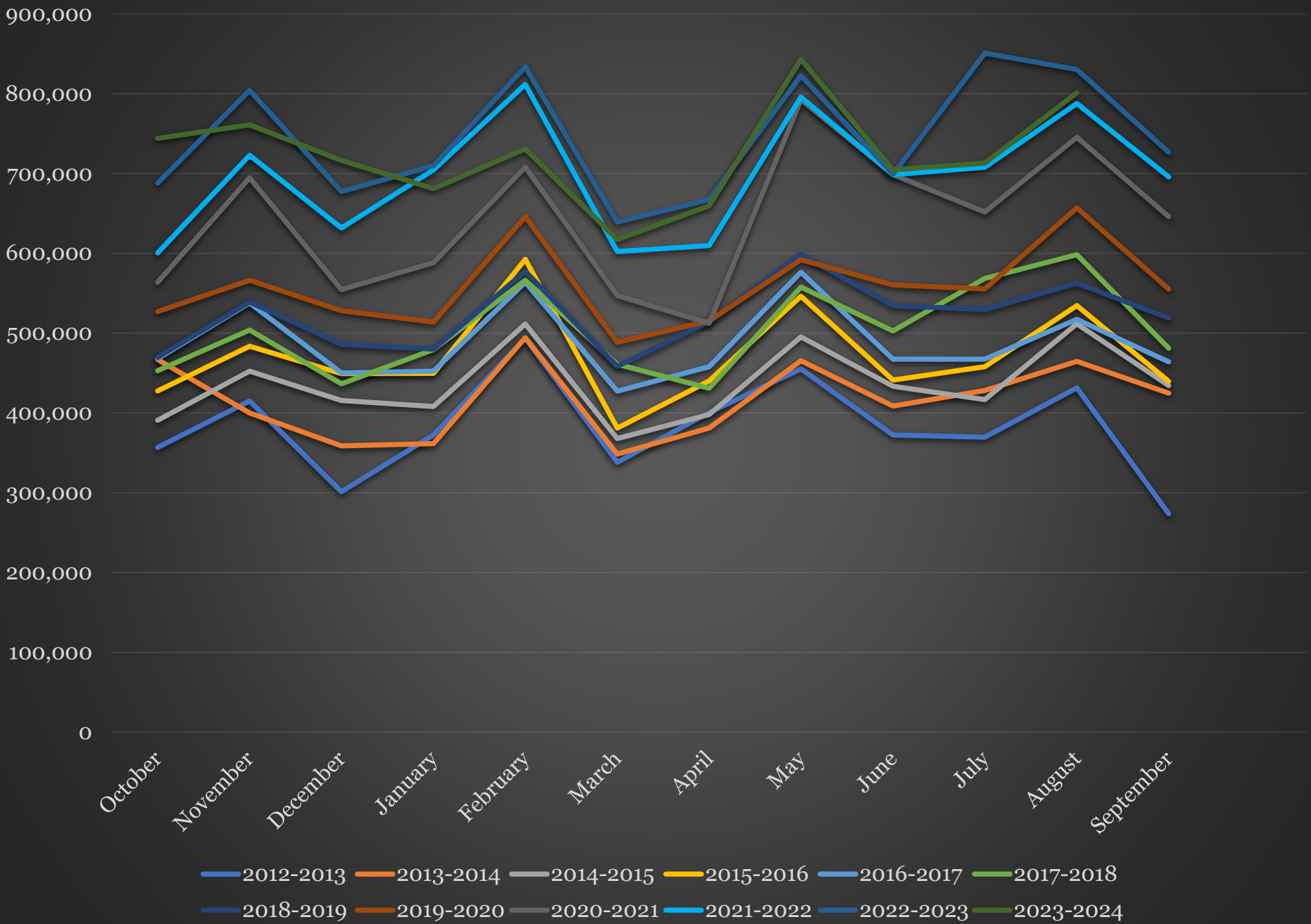
Mount Pleasant is in the Texarkana LAUS area which encloses 9 counties (Bowie, Cass, Delta, Franklin, Hopkins, Lamar, Morris, Red River, Titus) and 2 cities (Paris and Texarkana TX).

- [LAUS \(Local Area Unemployment Statistics\)](#)
- [WDA \(Workforce Development Area\)](#)
- <http://netxworkforce.org>

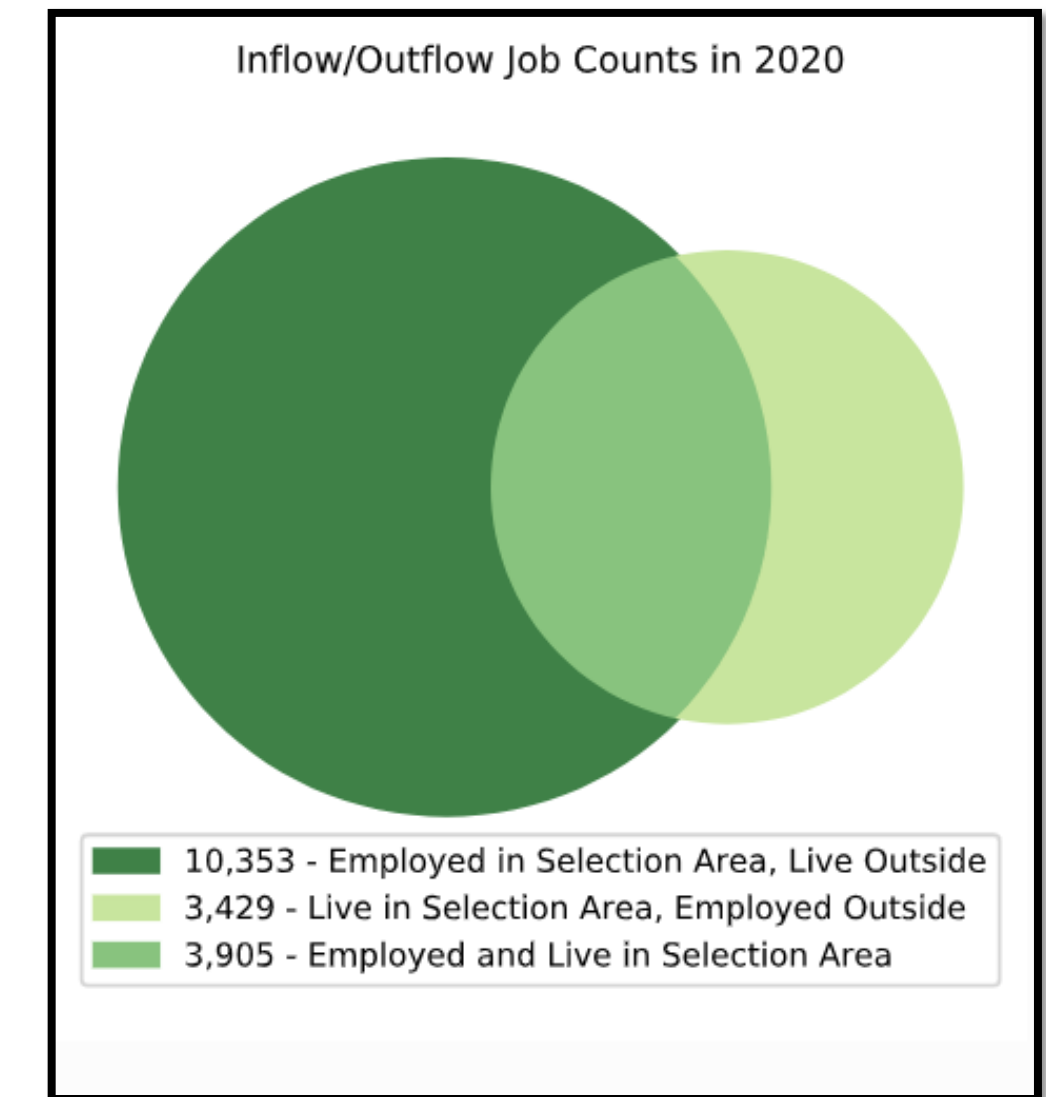
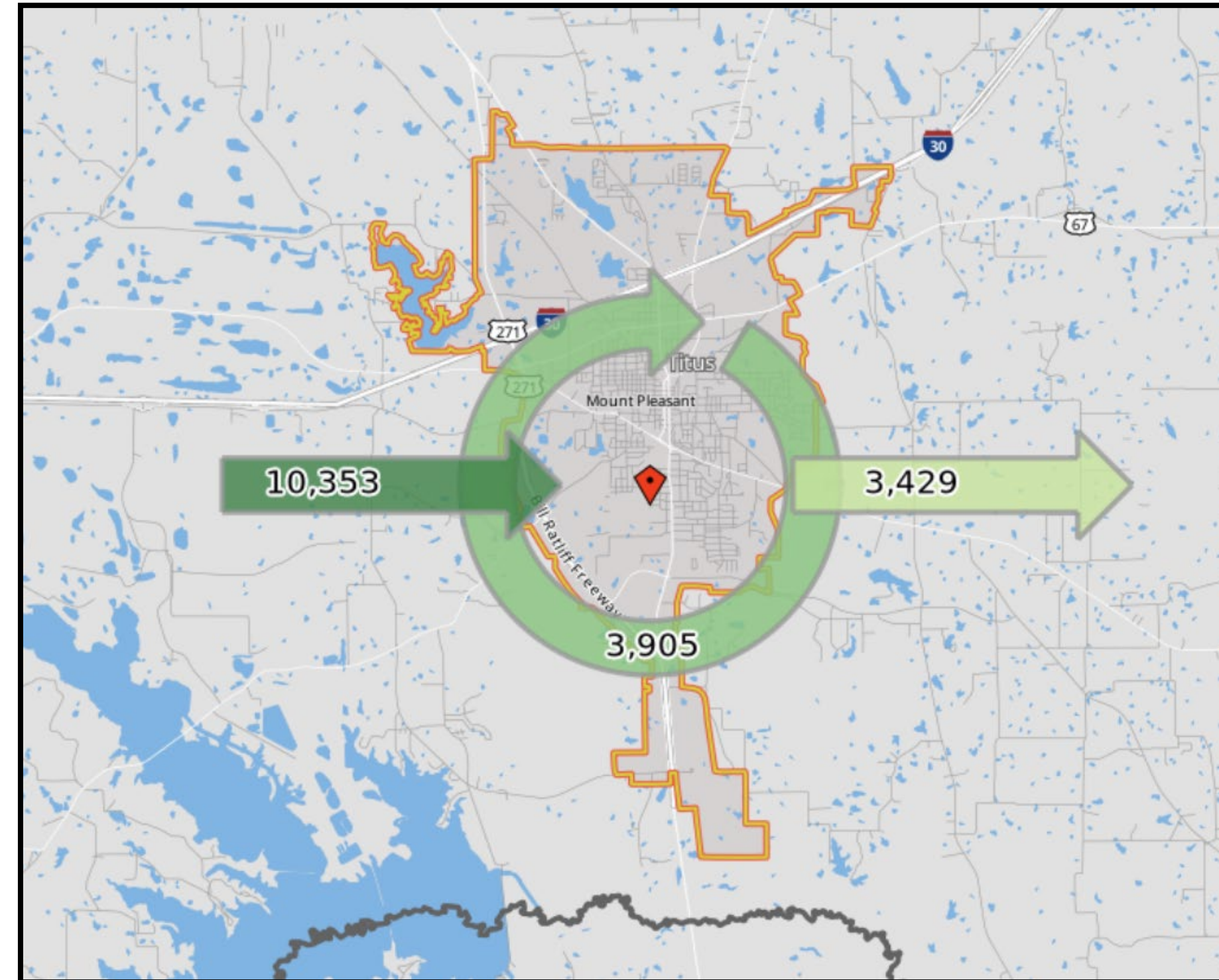
SALES TAX ANALYSIS
2023-2024

											Increase /	Increase /
	Fiscal Year	Fiscal Year	Fiscal Year	Fiscal Year	Fiscal Year	Fiscal Year	Fiscal Year		Fiscal Year		Decrease	Decrease
Month	2016-2017	2017-2018	2018-2019	2019-2020	2020-2021	2021-2022	2022-2023	YTD	2023-2024	YTD	Monthly	YTD
October	468,023	452,936	469,460	527,009	563,685	600,477	687,931	687,931	743,988	743,988	8.14%	8.14%
November	537,694	503,890	538,937	566,266	694,632	722,839	804,221	1,492,152	761,067	1,505,055	-5.36%	8.65%
December	450,032	436,514	486,070	528,108	554,464	631,776	671,535	2,163,687	716,431	2,221,486	6.68%	2.67%
January	452,418	479,294	479,869	514,014	588,357	704,431	709,764	2,873,451	680,935	3,554,386	-4.06%	23.70%
February	563,845	566,236	577,354	646,021	708,163	811,584	833,566	3,707,017	730,905	4,285,291	-12.31%	15.60%
March	427,259	461,022	458,329	488,500	547,037	602,265	639,123	4,346,140	617,184	4,902,475	-3.43%	12.80%
April	457,790	430,902	514,474	515,333	512,342	609,667	667,237	5,013,377	659,655	5,562,130	-1.13	10.95%
May	576,330	557,748	598,418	591,833	792,405	795,909	822,608	5,835,985	843,050	6,405,180	2.48%	9.75%
June	467,350	502,735	534,409	560,372	698,441	698,469	699,017	6,535,002	704,783	7,109,963	0.82%	8.80%
July	467,298	568,397	529,547	555,480	651,804	707,795	850,784	7,385,786	712,950	7,822,913	-16.20%	5.92%
August	517,103	598,256	562,637	656,930	745,461	787,645	830,227	8,216,010	800,974	8,623,887	-3.52%	4.96%
September	464,046	480,972	518,839	555,026	645,866	695,822	726,585	8,942,595	758,143	9,382,030	4.34%	4.91%
	5,849,188	6,038,902	6,268,343	6,704,892	7,702,657	8,368,689	8,942,595		9,382,030			

Sales Tax Analysis



Daily Workforce Inflow & Outflow for Mount Pleasant.



What it means:

The latest (2020, **NOT** 2023 data) available Census data indicate there were 14,258 employment opportunities in Mount Pleasant which were filled by only 3,905 workers who actually resided in Mount Pleasant. The majority (ie. 10,353 workers) commuted from outside city limits to employment opportunities within Mount Pleasant.

This phenomenon highlights the predictable, deep-rooted commuter ethic in the region. Workers will commute for gainful employment in order to live where they desire within the region's myriad offerings (e.g. lakes, forest, hyper-rural towns, and/or country-living).

This phenomenon, along with primary research, is MPEDC's substantiation for its 60-minute drivetime workforce of almost 500,000.

*Mount Pleasant-specific Data

Interpretation: MPEDC believes hundreds of workers in Mount Pleasant are forced to find housing outside of the city and county due to a lack of housing. This was true in 2019 and has been exacerbated by 2021 with large expansions occurring with major employers and new retailers opening operations since 2019 (e.g. Atwoods, Papa Johns, Long John Silvers, Williams Chicken, Starbucks, ALDI, and Wingstop)

Inflow/Outflow Job Counts (All Jobs) 2020		
	Count	Share
Employed in the Selection Area	14,258	100.0%
Employed in the Selection Area but Living Outside	10,353	72.6%
Employed and Living in the Selection Area	3,905	27.4%
Living in the Selection Area	7,334	100.0%
Living in the Selection Area but Employed Outside	3,429	46.8%
Living and Employed in the Selection Area	3,905	53.2%

Daily Workforce Inflow & Outflow for Mount Pleasant.

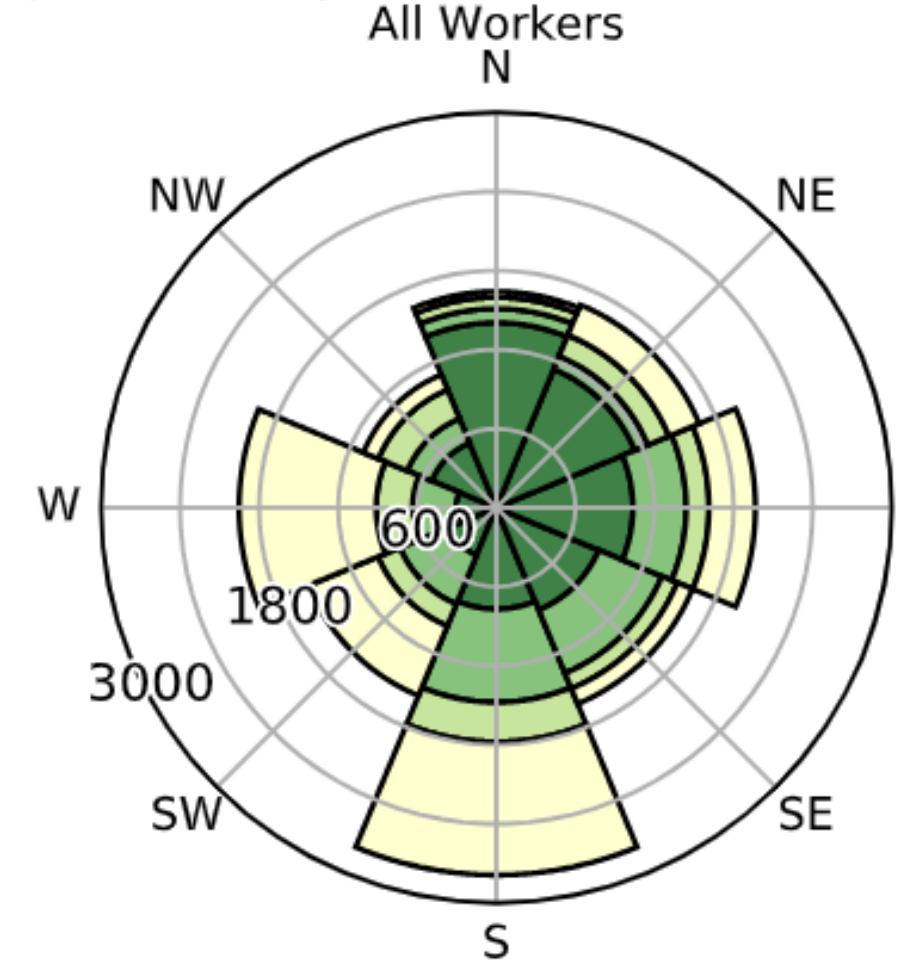
What it means:

The latest (2020, NOT 2023 data) available Census data indicate there were 14,258 employment opportunities in Mount Pleasant which were filled by only 3,905 workers who actually resided in Mount Pleasant. The majority (ie. 10,353 workers) commuted from outside city limits to employment opportunities within Mount Pleasant.

This phenomenon highlights the predictable, deep-rooted commuter ethic in the region. Workers will commute for gainful employment in order to live where they desire within the region's myriad offerings (e.g. lakes, forest, hyper-rural towns, and/or country-living).

This phenomenon, along with primary research, is MPEDC's substantiation for its 60-minute drivetime workforce of almost 500,000.

Job Counts by Distance/Direction in 2020



Jobs Counts by Places (Cities, CDPs, etc.)
Where Workers Live - All Jobs

	2020	
	Count	Share
All Places (Cities, CDPs, etc.)	14,258	100.0%
Mount Pleasant city, TX	3,905	27.4%
Pittsburg city, TX	554	3.9%
Texarkana city, TX	173	1.2%
Mount Vernon town, TX	154	1.1%
Daingerfield city, TX	136	1.0%
Dallas city, TX	130	0.9%
Naples city, TX	120	0.8%
Sulphur Springs city, TX	111	0.8%
Longview city, TX	104	0.7%
Paris city, TX	100	0.7%
All Other Locations	8,771	61.5%

NAICS Industry Sector

	2020	
	Count	Share
Agriculture, Forestry, Fishing and Hunting	19	0.2%
Mining, Quarrying, and Oil and Gas Extraction	1	0.0%
Utilities	40	0.4%
Construction	168	1.5%
Manufacturing	5,308	47.1%
Wholesale Trade	758	6.7%
Retail Trade	1,290	11.4%
Transportation and Warehousing	99	0.9%
Information	35	0.3%
Finance and Insurance	506	4.5%
Real Estate and Rental and Leasing	72	0.6%
Professional, Scientific, and Technical Services	114	1.0%
Management of Companies and Enterprises	7	0.1%
Administration & Support, Waste Management and Remediation	540	4.8%
Educational Services	5	0.0%
Health Care and Social Assistance	1,257	11.2%
Arts, Entertainment, and Recreation	34	0.3%
Accommodation and Food Services	826	7.3%
Other Services (excluding Public Administration)	191	1.7%
Public Administration	0	0.0%

Jobs by Distance - Work Census Block to Home Census Block

	2020	
	Count	Share
Total All Jobs	14,258	100.0%
Less than 10 miles	6,419	45.0%
10 to 24 miles	2,773	19.4%
25 to 50 miles	1,552	10.9%
Greater than 50 miles	3,514	24.6%

*Mount Pleasant-specific Data

Interpretation: MPEDC believes hundreds of workers in Mount Pleasant are forced to find housing outside of the city and county due to a lack of housing. This was true in 2019 and has been exacerbated by 2021 with large expansions occurring with major employers and new retailers opening operations since 2019 (e.g. Atwoods, Papa Johns, Long John Silvers, Williams Chicken, Starbucks, ALDI, and Wingstop)