

CITY OF MOUNT PLEASANT, TX
&
REGIONAL
SALES TAX & EMPLOYMENT
MONTHLY UPDATE



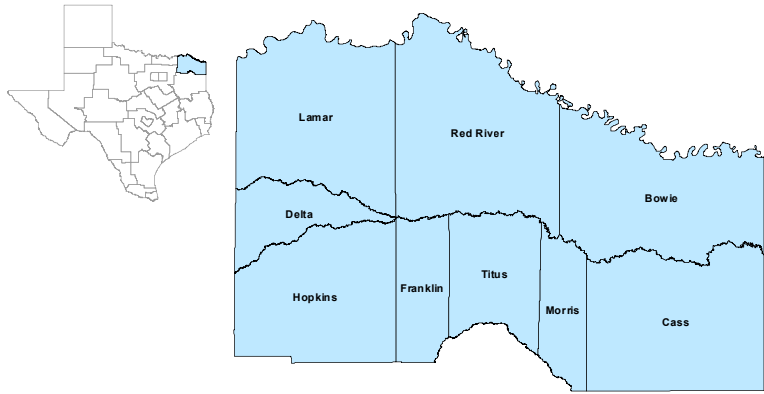
www.mpedc.org

903.572.6602

Updated on: 8/27/2024

Northeast Texas Workforce Development Area

July 2024



WDA Labor Force Statistics

	Jul-24	Jun-24	Jul-23	Yearly Change
Civilian Labor Force	126,270	126,492	124,484	1,786
Employed	120,589	120,550	118,933	1,656
Unemployed	5,681	5,942	5,551	130
Unemployment Rate	4.5%	4.7%	4.5%	0.0%

Texas Labor Force Statistics

	Jul-24	Jun-24	Jul-23	Yearly Change
Civilian Labor Force	15,454,094	15,438,068	15,124,871	329,223
Employed	14,776,132	14,738,168	14,486,077	290,055
Unemployed	677,962	699,900	638,794	39,168
Unemployment Rate	4.4%	4.5%	4.2%	0.2%

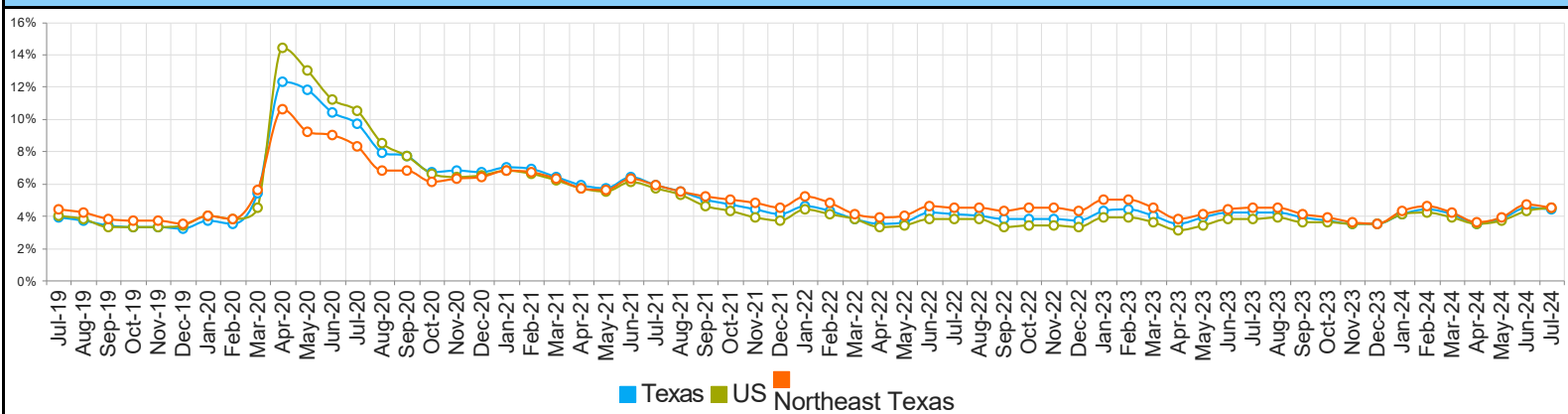
US Labor Force Statistics

	Jul-24	Jun-24	Jul-23	Yearly Change
Civilian Labor Force	169,723,000	169,007,000	168,354,000	1,369,000
Employed	162,038,000	161,774,000	161,982,000	56,000
Unemployed	7,685,000	7,233,000	6,372,000	1,313,000
Unemployment Rate	4.5%	4.3%	3.8%	0.7%

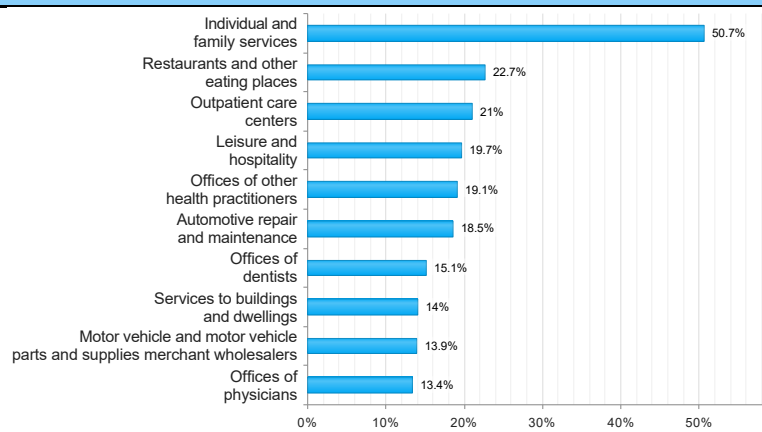
Continued Claims for the Week of the 12th

	Jul-24	Jun-24	Jul-23	Yearly Change
WDA	866	870	795	71
Texas	137,118	130,194	121,520	15,598

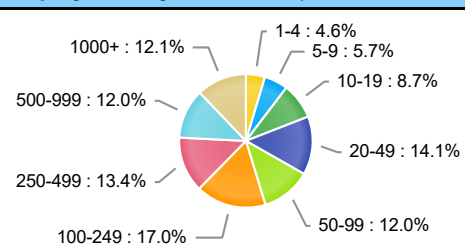
Historical Unemployment Rates



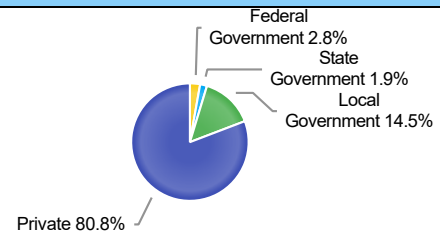
Projected Top Ten Fastest Growing Industries in WDA (% Growth 2022-2032)



Employment by Size Class (1st Quarter 2024)



Employment by Ownership (1st Quarter 2024)



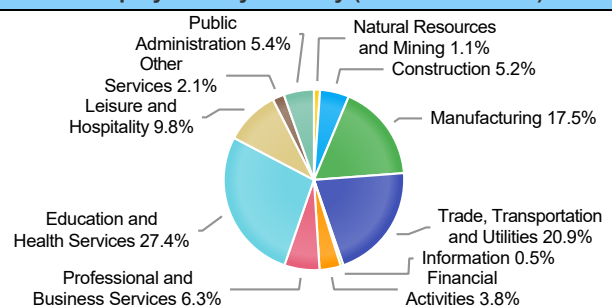
Average Weekly Wage (1st Quarter 2024)

	Q1 2024	Q4 2023	Q1 2023	Quarterly Change	Yearly Change
WDA	\$991	\$1,017	\$968	-\$26	\$23
Texas	\$1,540	\$1,427	\$1,480	\$113	\$60
US	\$1,527	\$1,435	\$1,465	\$92	\$62

Employment by Industry (1st Quarter 2024, Percent Change)

Industry	Employment	% of Total	% Quarterly Change	% Yearly Change
Natural Resources and Mining	1,203	1.1%	-4.4%	-6.4%
Construction	5,903	5.2%	-0.9%	2.6%
Manufacturing	19,857	17.5%	0.4%	4.3%
Trade, Transportation and Utilities	23,731	20.9%	-1.5%	1.1%
Information	585	0.5%	1.9%	2.6%
Financial Activities	4,335	3.8%	-0.6%	-1.4%
Professional and Business Services	7,199	6.3%	6.1%	4.3%
Education and Health Services	31,117	27.4%	-0.4%	-1.2%
Leisure and Hospitality	11,137	9.8%	-3.1%	1.3%
Other Services	2,416	2.1%	-0.5%	2.8%
Public Administration	6,133	5.4%	0.3%	0.9%

Employment by Industry (1st Quarter 2024)



CITY OF MOUNT PLEASANT, TX

City Sales and Use Tax Comparison Summary

City	Net Payment This Period	Comparable Payment Prior Year	% of Change	Payment YTD	Prior Year Payment YTD	% of Change
Mount Pleasant	\$800,973.58	\$830,226.71	-3.52%	\$5,750,433.35	\$6,052,324.04	-4.98%
Daingerfield	\$65,371.82	\$63,081.26	3.63%	\$442,756.98	\$439,316.06	0.78%
Mount Vernon	\$108,050.70	\$122,354.79	-11.69%	\$801,497.86	\$789,103.41	1.57%
Paris	\$1,155,347.59	\$1,154,622.65	0.06%	\$8,674,906.01	\$8,364,844.89	3.70%
Pittsburg	\$138,607.06	\$145,734.45	-4.89%	\$1,028,244.99	\$1,125,812.45	-8.66%
Sulphur Springs	\$820,355.68	\$793,418.74	3.39%	\$6,111,871.06	\$5,895,285.67	3.67%

12-Month Mt. Pleasant Monthly Employment, Labor, Unemployment, & Unemployment Rate

P: Preliminary

Year	Month	Labor Force	Employment	Unemployment	Unemployment Rate
2024	June	14110(P)	13383(P)	727(P)	5.2(P)
2024	May	13898	13322	576	4.1
2024	April	13875	13362	513	3.7
2024	Mar	13827	13199	628	4.5
2024	Feb	13782	13143	639	4.6
2024	Jan	13455	12858	597	4.4
2023	Dec	14060(P)	13583(P)	477(P)	3.4(P)
2023	Nov	14179	13705	474	3.3
2023	Oct	14090	13559	531	3.8
2023	Sept	14159	13576	583	4.1
2023	Aug	14157	13470	687	4.9
2023	Jul	14171	13490	681	4.8
2023	June	13899	13277	622	4.5

TEXARKANA LAUS

Area	Area Type	July-24				June-24				July-23			
		Labor Force	Employment	Unemployment	Rate	Labor Force	Employment	Unemployment	Rate	Labor Force	Employment	Unemployment	Rate
Bowie	County	38,984	37,211	1,773	4.5	39,116	37,253	1,863	4.8	38,561	36,825	1,736	4.5
Cass	County	12,222	11,568	654	5.4	12,240	11,565	675	5.5	12,045	11,448	597	5.0
Delta	County	2,535	2,423	112	4.4	2,538	2,423	115	4.5	2,523	2,403	120	4.8
Franklin	County	5,156	4,934	222	4.3	5,217	4,977	240	4.6	5,084	4,877	207	4.1
Hopkins	County	19,594	18,904	690	3.5	19,612	18,891	721	3.7	18,942	18,295	647	3.4
Lamar	County	24,063	23,087	976	4.1	24,075	23,035	1,040	4.3	23,973	22,911	1,062	4.4
Morris	County	4,678	4,371	307	6.6	4,632	4,317	315	6.8	4,599	4,308	291	6.3
Red River	County	4,953	4,711	242	4.9	4,947	4,698	249	5.0	5,018	4,762	256	5.1
Titus	County	14,085	13,380	705	5.0	14,115	13,391	724	5.1	13,739	13,104	635	4.6
Paris	City	11,566	11,038	528	4.6	11,591	11,013	578	5.0	11,518	10,954	564	4.9
Texarkana	City	14,946	14,212	734	4.9	14,983	14,228	755	5.0	14,757	14,065	692	4.7

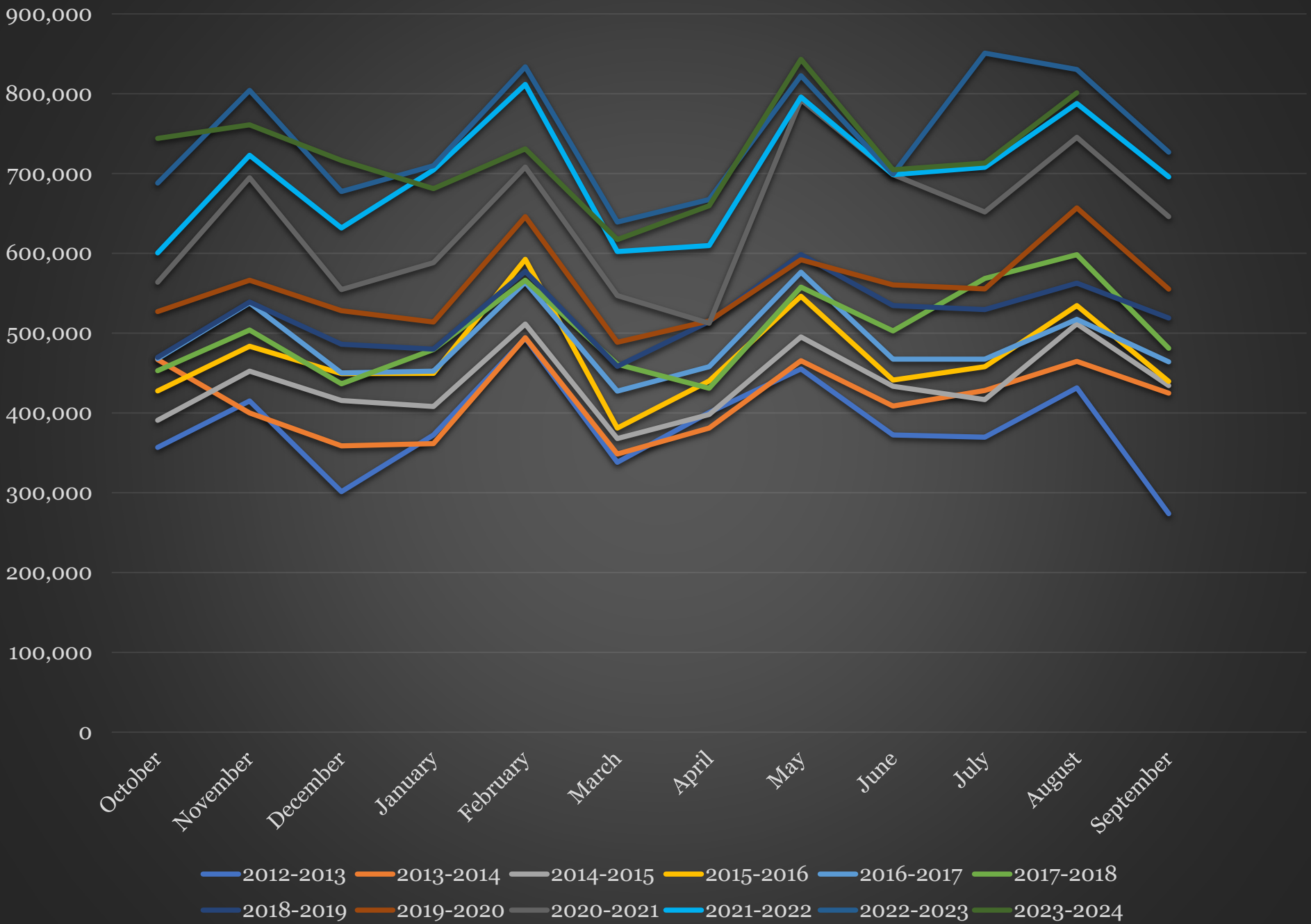
Mount Pleasant is in the Texarkana LAUS area which encloses 9 counties (Bowie, Cass, Delta, Franklin, Hopkins, Lamar, Morris, Red River, Titus) and 2 cities (Paris and Texarkana TX).

- [LAUS \(Local Area Unemployment Statistics\)](#)
- [WDA \(Workforce Development Area\)](#)
- <http://netxworkforce.org>

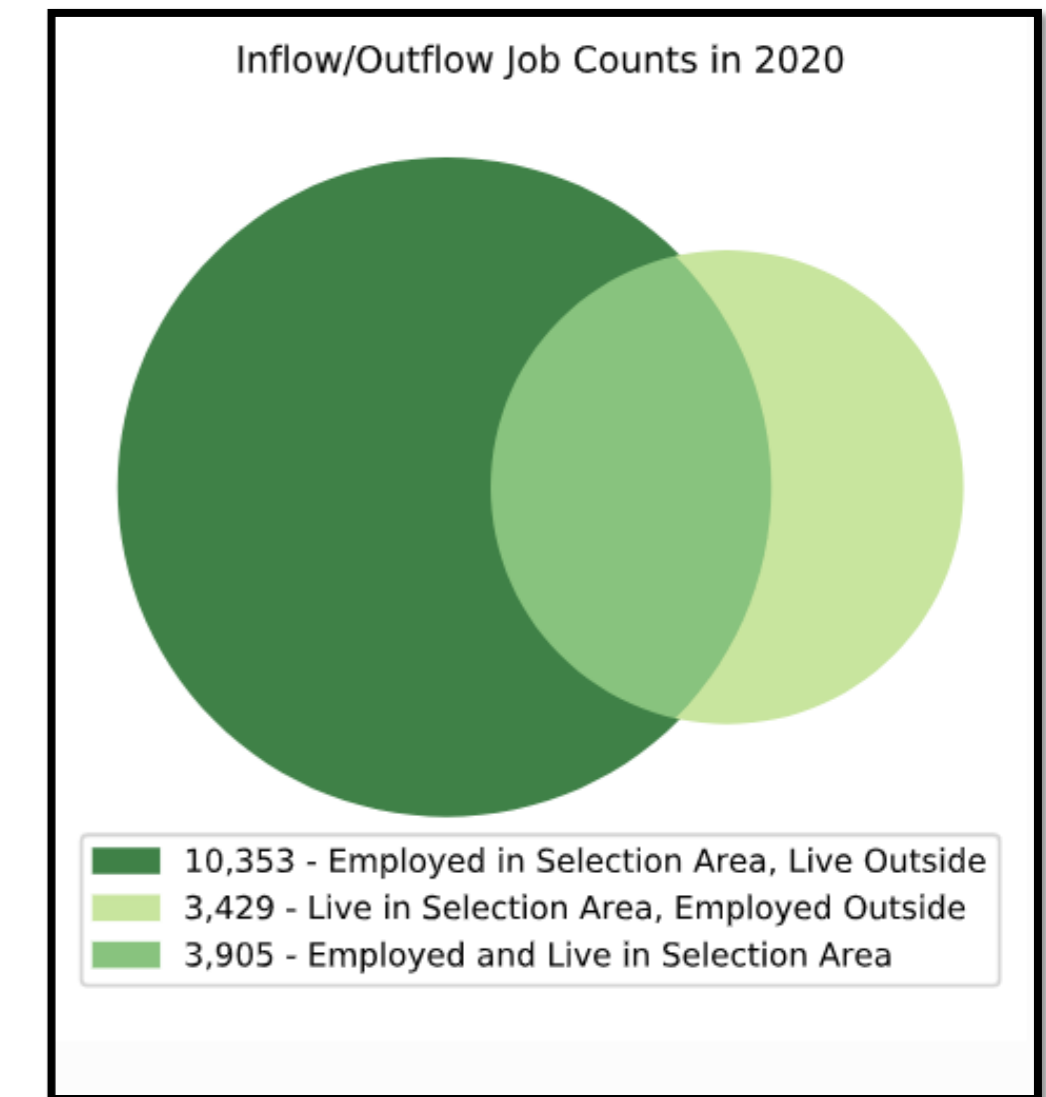
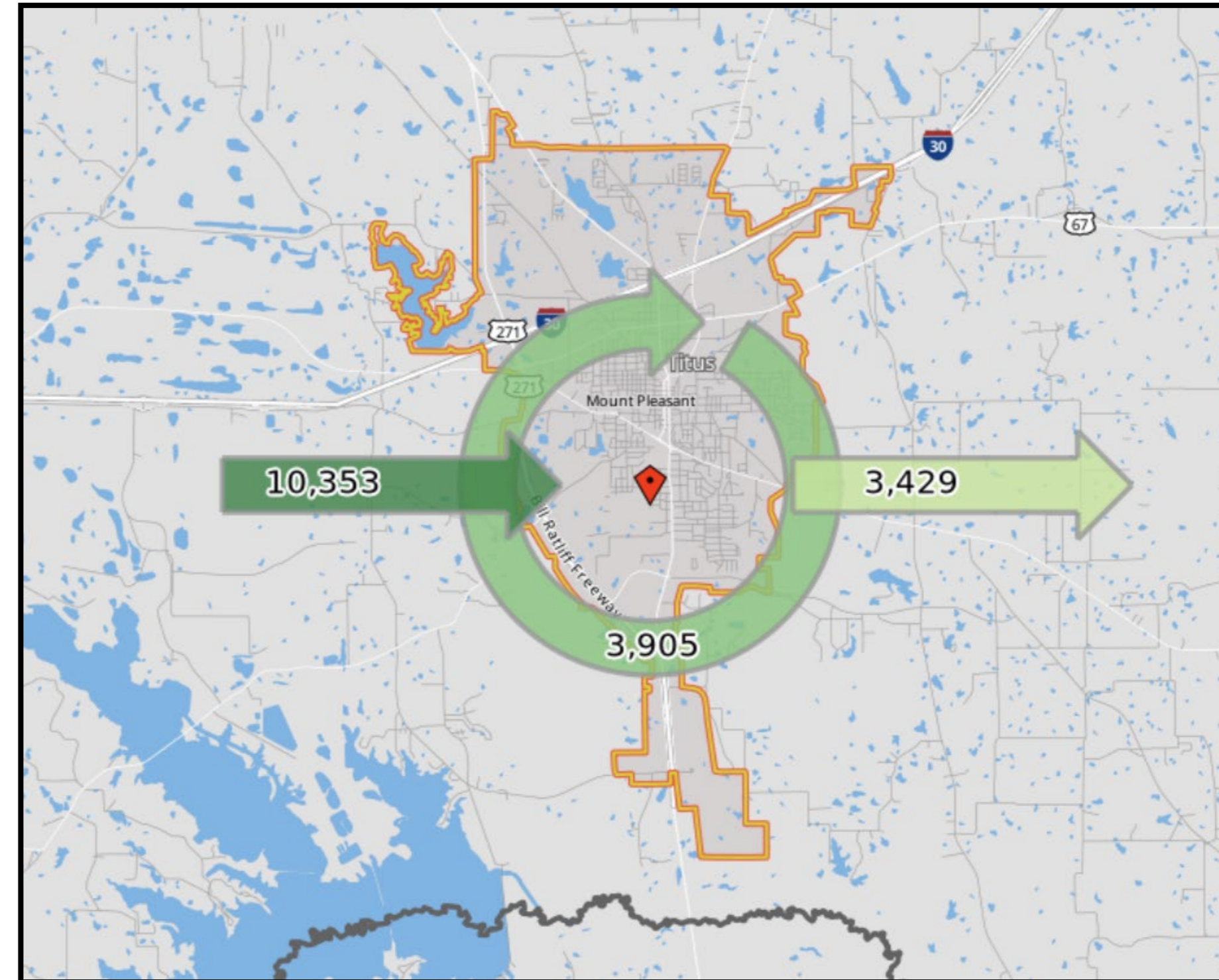
SALES TAX ANALYSIS
2023-2024

											Increase /	Increase /
	Fiscal Year	Fiscal Year	Fiscal Year	Fiscal Year	Fiscal Year	Fiscal Year	Fiscal Year		Fiscal Year		Decrease	Decrease
Month	2016-2017	2017-2018	2018-2019	2019-2020	2020-2021	2021-2022	2022-2023	YTD	2023-2024	YTD	Monthly	YTD
October	468,023	452,936	469,460	527,009	563,685	600,477	687,931	687,931	743,988	743,988	8.14%	8.14%
November	537,694	503,890	538,937	566,266	694,632	722,839	804,221	1,492,152	761,067	1,505,055	-5.36%	8.65%
December	450,032	436,514	486,070	528,108	554,464	631,776	671,535	2,163,687	716,431	2,221,486	6.68%	2.67%
January	452,418	479,294	479,869	514,014	588,357	704,431	709,764	2,873,451	680,935	3,554,386	-4.06%	23.70%
February	563,845	566,236	577,354	646,021	708,163	811,584	833,566	3,707,017	730,905	4,285,291	-12.31%	15.60%
March	427,259	461,022	458,329	488,500	547,037	602,265	639,123	4,346,140	617,184	4,902,475	-3.43%	12.80%
April	457,790	430,902	514,474	515,333	512,342	609,667	667,237	5,013,377	659,655	5,562,130	-1.13	10.95%
May	576,330	557,748	598,418	591,833	792,405	795,909	822,608	5,835,985	843,050	6,405,180	2.48%	9.75%
June	467,350	502,735	534,409	560,372	698,441	698,469	699,017	6,535,002	704,783	7,109,963	0.82%	8.80%
July	467,298	568,397	529,547	555,480	651,804	707,795	850,784	7,385,786	712,950	7,822,913	-16.20%	5.92%
August	517,103	598,256	562,637	656,930	745,461	787,645	830,227	8,216,010	800,974	8,623,887	-3.52%	4.96%
September	464,046	480,972	518,839	555,026	645,866	695,822	726,585	8,942,595				
	5,849,188	6,038,902	6,268,343	6,704,892	7,702,657	8,368,689	8,942,595		8,623,887			

Sales Tax Analysis



Daily Workforce Inflow & Outflow for Mount Pleasant.



What it means:

The latest (2020, **NOT** 2023 data) available Census data indicate there were 14,258 employment opportunities in Mount Pleasant which were filled by only 3,905 workers who actually resided in Mount Pleasant. The majority (ie. 10,353 workers) commuted from outside city limits to employment opportunities within Mount Pleasant.

This phenomenon highlights the predictable, deep-rooted commuter ethic in the region. Workers will commute for gainful employment in order to live where they desire within the region's myriad offerings (e.g. lakes, forest, hyper-rural towns, and/or country-living).

This phenomenon, along with primary research, is MPEDC's substantiation for its 60-minute drivetime workforce of almost 500,000.

*Mount Pleasant-specific Data

Interpretation: MPEDC believes hundreds of workers in Mount Pleasant are forced to find housing outside of the city and county due to a lack of housing. This was true in 2019 and has been exacerbated by 2021 with large expansions occurring with major employers and new retailers opening operations since 2019 (e.g. Atwoods, Papa Johns, Long John Silvers, Williams Chicken, Starbucks, ALDI, and Wingstop)

Inflow/Outflow Job Counts (All Jobs) 2020		
	Count	Share
Employed in the Selection Area	14,258	100.0%
Employed in the Selection Area but Living Outside	10,353	72.6%
Employed and Living in the Selection Area	3,905	27.4%
Living in the Selection Area	7,334	100.0%
Living in the Selection Area but Employed Outside	3,429	46.8%
Living and Employed in the Selection Area	3,905	53.2%

Daily Workforce Inflow & Outflow for Mount Pleasant.

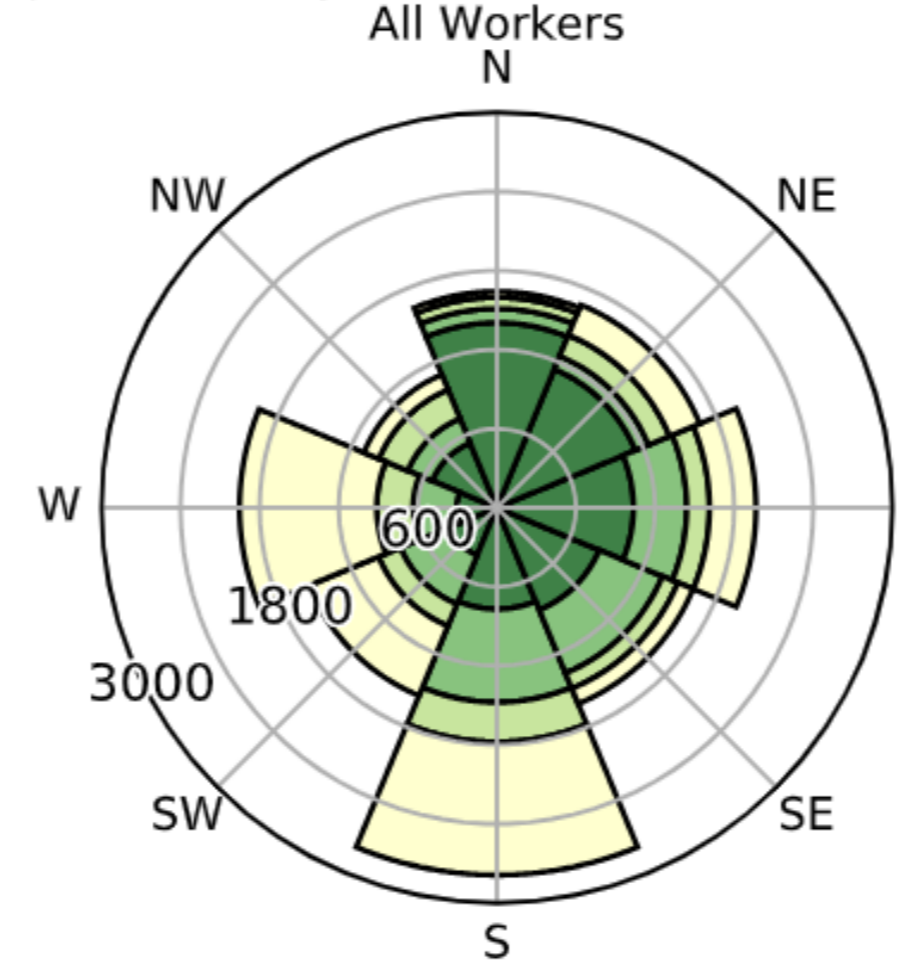
What it means:

The latest (2020, NOT 2023 data) available Census data indicate there were 14,258 employment opportunities in Mount Pleasant which were filled by only 3,905 workers who actually resided in Mount Pleasant. The majority (ie. 10,353 workers) commuted from outside city limits to employment opportunities within Mount Pleasant.

This phenomenon highlights the predictable, deep-rooted commuter ethic in the region. Workers will commute for gainful employment in order to live where they desire within the region's myriad offerings (e.g. lakes, forest, hyper-rural towns, and/or country-living).

This phenomenon, along with primary research, is MPEDC's substantiation for its 60-minute drivetime workforce of almost 500,000.

Job Counts by Distance/Direction in 2020



Jobs Counts by Places (Cities, CDPs, etc.) Where Workers Live - All Jobs

	2020	
	Count	Share
All Places (Cities, CDPs, etc.)	14,258	100.0%
Mount Pleasant city, TX	3,905	27.4%
Pittsburg city, TX	554	3.9%
Texarkana city, TX	173	1.2%
Mount Vernon town, TX	154	1.1%
Daingerfield city, TX	136	1.0%
Dallas city, TX	130	0.9%
Naples city, TX	120	0.8%
Sulphur Springs city, TX	111	0.8%
Longview city, TX	104	0.7%
Paris city, TX	100	0.7%
All Other Locations	8,771	61.5%

NAICS Industry Sector

	2020	
	Count	Share
Agriculture, Forestry, Fishing and Hunting	19	0.2%
Mining, Quarrying, and Oil and Gas Extraction	1	0.0%
Utilities	40	0.4%
Construction	168	1.5%
Manufacturing	5,308	47.1%
Wholesale Trade	758	6.7%
Retail Trade	1,290	11.4%
Transportation and Warehousing	99	0.9%
Information	35	0.3%
Finance and Insurance	506	4.5%
Real Estate and Rental and Leasing	72	0.6%
Professional, Scientific, and Technical Services	114	1.0%
Management of Companies and Enterprises	7	0.1%
Administration & Support, Waste Management and Remediation	540	4.8%
Educational Services	5	0.0%
Health Care and Social Assistance	1,257	11.2%
Arts, Entertainment, and Recreation	34	0.3%
Accommodation and Food Services	826	7.3%
Other Services (excluding Public Administration)	191	1.7%
Public Administration	0	0.0%

Jobs by Distance - Work Census Block to Home Census Block

	2020	
	Count	Share
Total All Jobs	14,258	100.0%
Less than 10 miles	6,419	45.0%
10 to 24 miles	2,773	19.4%
25 to 50 miles	1,552	10.9%
Greater than 50 miles	3,514	24.6%

*Mount Pleasant-specific Data

Interpretation: MPEDC believes hundreds of workers in Mount Pleasant are forced to find housing outside of the city and county due to a lack of housing. This was true in 2019 and has been exacerbated by 2021 with large expansions occurring with major employers and new retailers opening operations since 2019 (e.g. Atwoods, Papa Johns, Long John Silvers, Williams Chicken, Starbucks, ALDI, and Wingstop)