

CITY OF MOUNT PLEASANT, TX  
&  
REGIONAL  
SALES TAX & EMPLOYMENT  
MONTHLY UPDATE



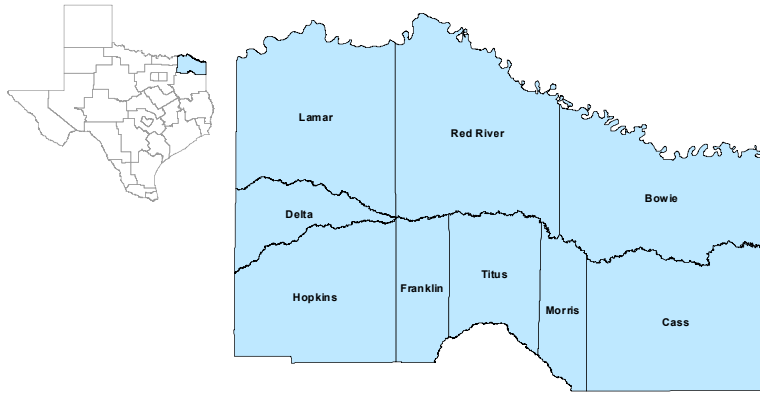
[www.mpedc.org](http://www.mpedc.org)

903.572.6602

Updated on: 3/26/2024

## Northeast Texas Workforce Development Area

February 2024



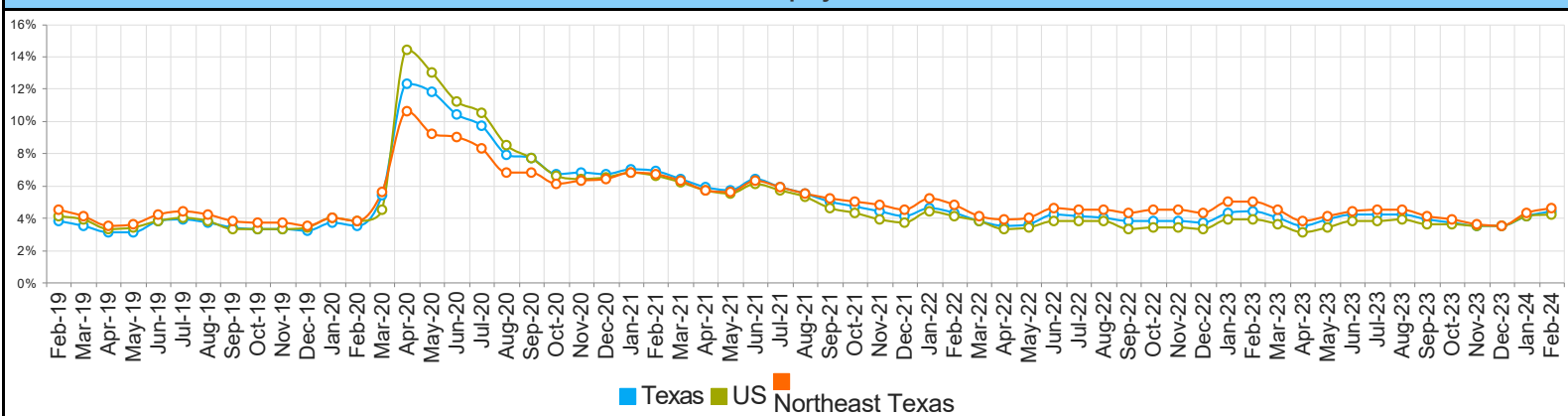
WDA Labor Force Statistics				
	Feb-24	Jan-24	Feb-23	Yearly Change
Civilian Labor Force	124,990	123,126	124,707	283
Employed	119,278	117,850	118,502	776
Unemployed	5,712	5,276	6,205	-493
Unemployment Rate	4.6%	4.3%	5.0%	-0.4%

Texas Labor Force Statistics				
	Feb-24	Jan-24	Feb-23	Yearly Change
Civilian Labor Force	15,295,668	15,140,281	15,011,661	284,007
Employed	14,629,593	14,521,734	14,357,352	272,241
Unemployed	666,075	618,547	654,309	11,766
Unemployment Rate	4.4%	4.1%	4.4%	0.0%

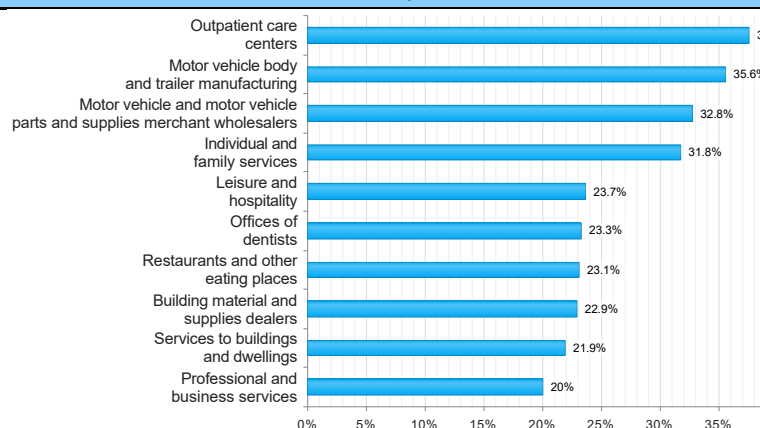
US Labor Force Statistics				
	Feb-24	Jan-24	Feb-23	Yearly Change
Civilian Labor Force	167,285,000	166,428,000	166,178,000	1,107,000
Employed	160,315,000	159,650,000	159,713,000	602,000
Unemployed	6,970,000	6,778,000	6,465,000	505,000
Unemployment Rate	4.2%	4.1%	3.9%	0.3%

Continued Claims for the Week of the 12th				
	Feb-24	Jan-24	Feb-23	Yearly Change
WDA	777	807	910	-133
Texas	114,076	116,816	98,622	15,454

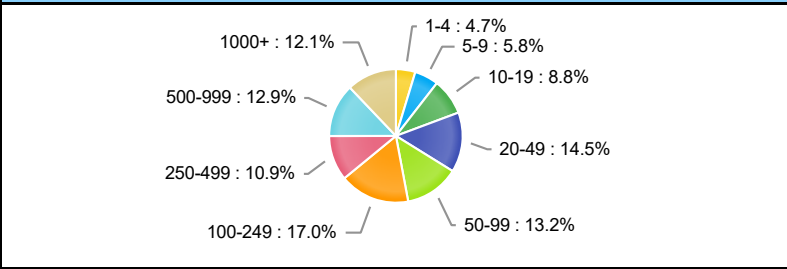
## Historical Unemployment Rates



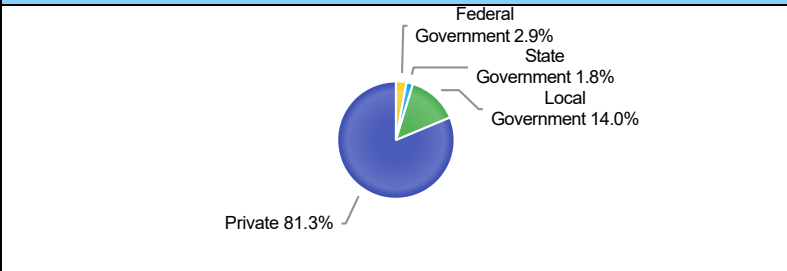
## Projected Top Ten Fastest Growing Industries in WDA (% Growth 2020-2030)



## Employment by Size Class (3rd Quarter 2023)



## Employment by Ownership (3rd Quarter 2023)

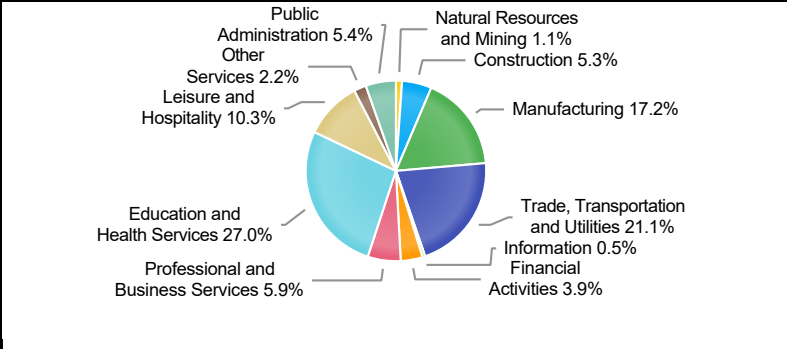


Average Weekly Wage (3rd Quarter 2023)					
	Q3 2023	Q2 2023	Q3 2022	Quarterly Change	Yearly Change
WDA	\$958	\$944	\$942	\$14	\$16
Texas	\$1,335	\$1,321	\$1,332	\$14	\$3
US	\$1,334	\$1,332	\$1,333	\$2	\$1

## Employment by Industry (3rd Quarter 2023, Percent Change)

Industry	Employment	% of Total	% Quarterly Change	% Yearly Change
Natural Resources and Mining	1,265	1.1%	-1.9%	19.9%
Construction	6,015	5.3%	-1.1%	7.2%
Manufacturing	19,381	17.2%	0.9%	-1.6%
Trade, Transportation and Utilities	23,725	21.1%	0.6%	0.2%
Information	581	0.5%	-0.7%	-3.5%
Financial Activities	4,367	3.9%	-0.6%	1.7%
Professional and Business Services	6,690	5.9%	-4.8%	-8.8%
Education and Health Services	30,468	27.0%	-3.5%	-1.0%
Leisure and Hospitality	11,648	10.3%	-0.3%	2.8%
Other Services	2,452	2.2%	0.9%	-0.4%
Public Administration	6,112	5.4%	0.1%	-0.7%

## Employment by Industry (3rd Quarter 2023)



# CITY OF MOUNT PLEASANT, TX

## City Sales and Use Tax Comparison Summary

City	Net Payment This Period	Comparable Payment Prior Year	% of Change	Payment YTD	Prior Year Payment YTD	% of Change
Mount Pleasant	\$617,183.90	\$639,122.77	-3.43%	\$2,029,022.90	\$2,182,452.46	-7.03%
Daingerfield	\$51,370.90	\$52,483.27	-2.11%	\$163,904.96	\$168,800.80	-2.90%
Mount Vernon	\$94,339.25	\$90,632.57	4.08%	\$299,654.79	\$285,475.40	4.96%
Paris	\$902,351.76	\$917,167.37	-1.61%	\$3,273,778.25	\$3,136,241.36	4.38%
Pittsburg	\$100,266.72	\$134,292.85	-25.33%	\$382,883.05	\$447,638.96	-14.46%
Sulphur Springs	\$652,058.77	\$653,603.68	-0.23%	\$2,278,968.69	\$2,233,720.56	2.02%

## 12-Month Mt. Pleasant Monthly Employment, Labor, Unemployment, & Unemployment Rate

**P: Preliminary**

Year	Month	Labor Force	Employment	Unemployment	Unemployment Rate
2024	Jan	13443(P)	12848(P)	595(P)	4.4(P)
2023	Dec	14060(P)	13583(P)	477(P)	3.4(P)
2023	Nov	14179	13705	474	3.3
2023	Oct	14090	13559	531	3.8
2023	Sept	14159	13576	583	4.1
2023	Aug	14157	13470	687	4.9
2023	Jul	14171	13490	681	4.8
2023	June	13899	13277	622	4.5
2023	May	13765	13187	578	4.2
2023	Apr	13928	13401	527	3.8
2023	Mar	14277	13621	656	4.6
2023	Feb	14191	13504	687	4.8
2023	Jan	13869	13223	646	4.7

**TEXARKANA LAUS**

Area	Area Type	February-24				January-24				February-23			
		Labor Force	Employment	Unemployment	Rate	Labor Force	Employment	Unemployment	Rate	Labor Force	Employment	Unemployment	Rate
Bowie	County	38,747	36,954	1,793	4.6	38,346	36,706	1,640	4.3	38,610	36,723	1,887	4.9
Cass	County	12,132	11,472	660	5.4	11,966	11,361	605	5.1	12,069	11,432	637	5.3
Delta	County	2,526	2,416	110	4.4	2,491	2,384	107	4.3	2,527	2,389	138	5.5
Franklin	County	5,178	4,958	220	4.2	5,043	4,825	218	4.3	5,300	5,090	210	4.0
Hopkins	County	19,459	18,748	711	3.7	19,213	18,580	633	3.3	19,068	18,179	889	4.7
Lamar	County	23,699	22,647	1,052	4.4	23,286	22,316	970	4.2	23,864	22,645	1,219	5.1
Morris	County	4,576	4,288	288	6.3	4,519	4,244	275	6.1	4,543	4,258	285	6.3
Red River	County	4,889	4,651	238	4.9	4,807	4,576	231	4.8	5,050	4,773	277	5.5
Titus	County	13,784	13,144	640	4.6	13,455	12,858	597	4.4	13,676	13,013	663	4.8
Paris	City	11,373	10,828	545	4.8	11,129	10,669	460	4.1	11,521	10,827	694	6.0
Texarkana	City	14,859	14,114	745	5.0	14,689	14,019	670	4.6	14,793	14,026	767	5.2

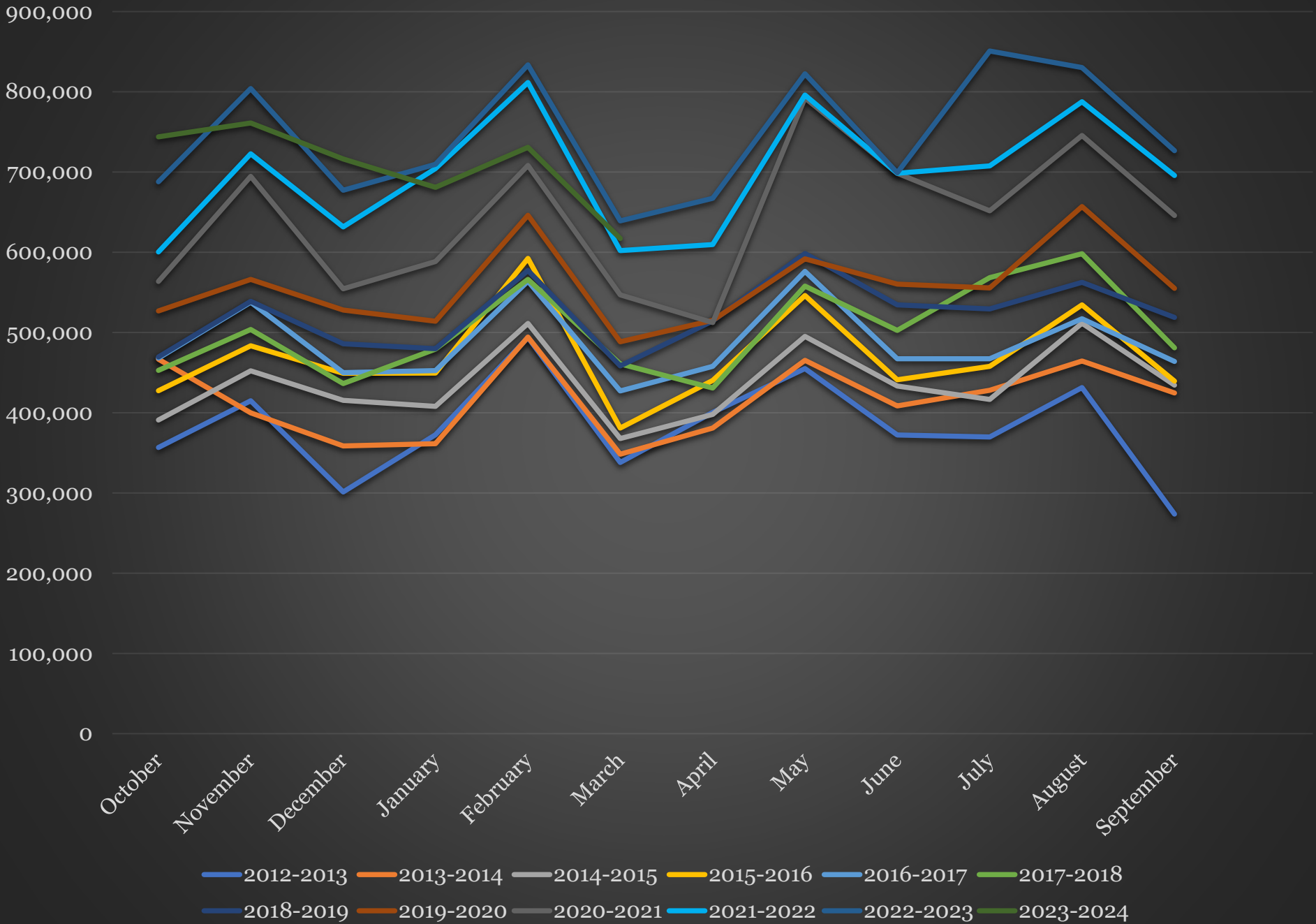
Mount Pleasant is in the Texarkana LAUS area which encloses 9 counties (Bowie, Cass, Delta, Franklin, Hopkins, Lamar, Morris, Red River, Titus) and 2 cities (Paris and Texarkana TX).

- [LAUS \(Local Area Unemployment Statistics\)](#)
- [WDA \(Workforce Development Area\)](#)
- <http://netxworkforce.org>

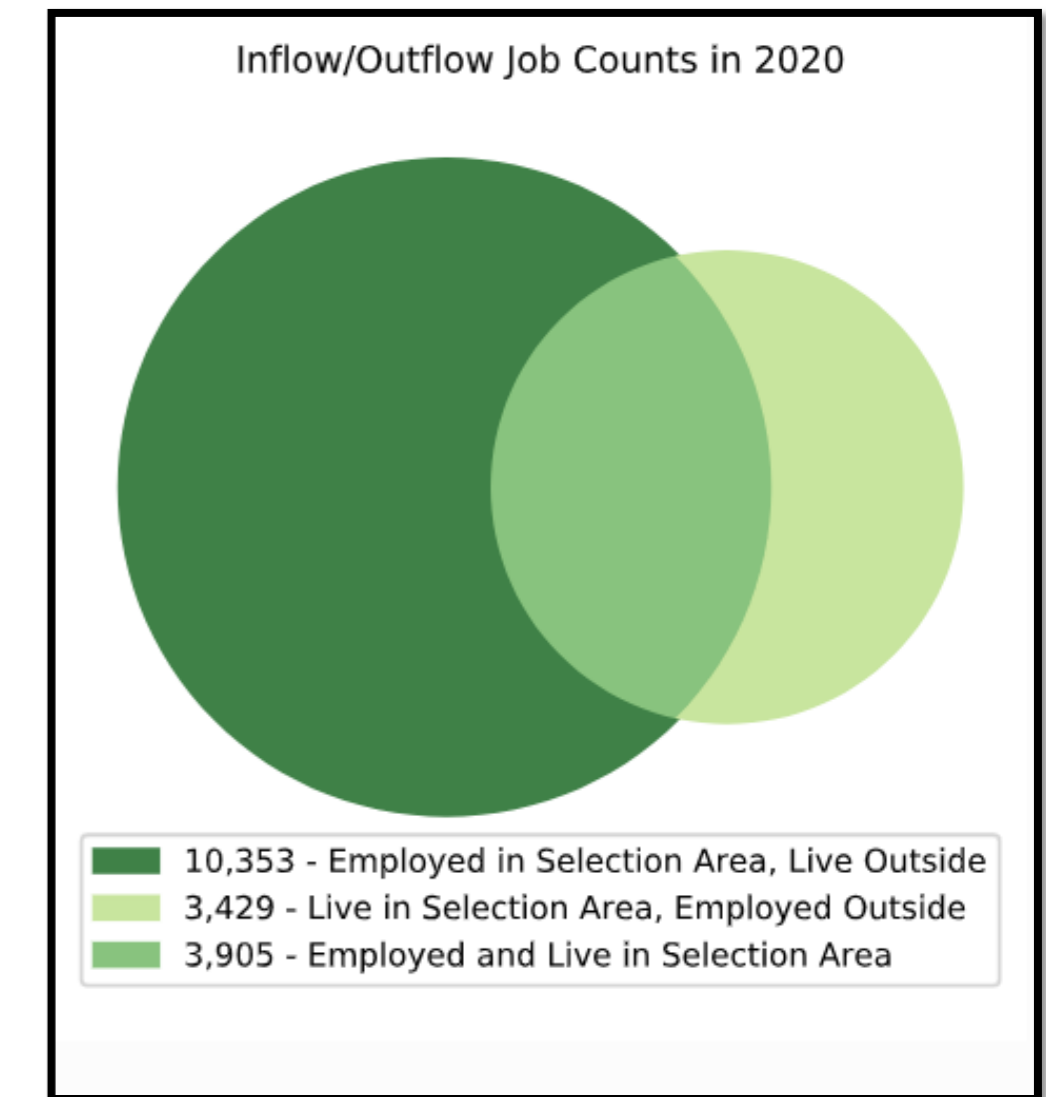
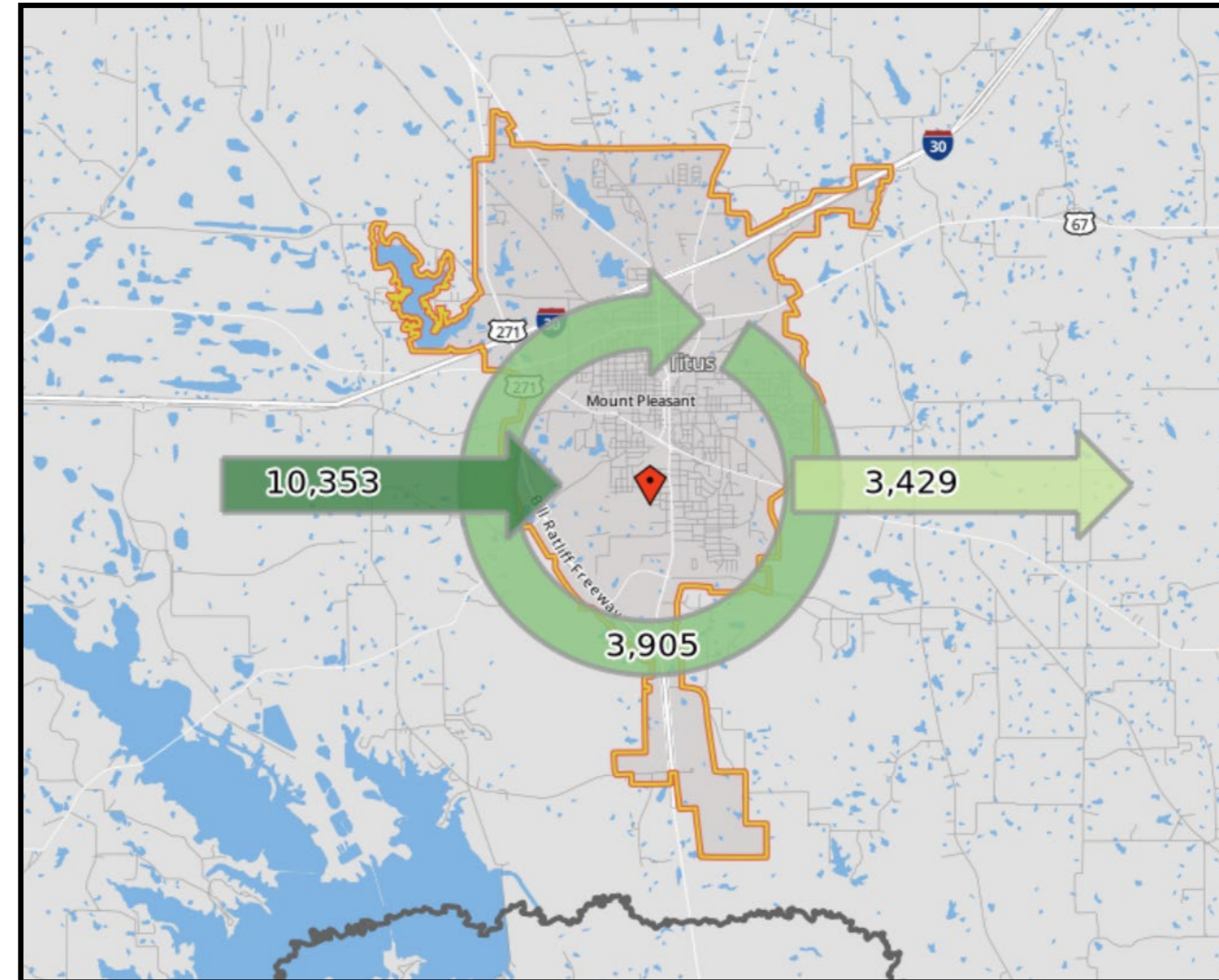
**SALES TAX ANALYSIS**  
2023-2024

											Increase /	Increase /
	Fiscal Year	Fiscal Year	Fiscal Year	Fiscal Year	Fiscal Year	Fiscal Year	Fiscal Year		Fiscal Year		Decrease	Decrease
Month	2016-2017	2017-2018	2018-2019	2019-2020	2020-2021	2021-2022	2022-2023	YTD	2023-2024	YTD	Monthly	YTD
October	468,023	452,936	469,460	527,009	563,685	600,477	687,931	687,931	743,988	743,988	8.14%	8.14%
November	537,694	503,890	538,937	566,266	694,632	722,839	804,221	1,492,152	761,067	1,505,055	-5.36%	8.65%
December	450,032	436,514	486,070	528,108	554,464	631,776	671,535	2,163,687	716,431	2,221,486	6.68%	2.67%
January	452,418	479,294	479,869	514,014	588,357	704,431	709,764	2,873,451	680,935	3,554,386	-4.06%	23.70%
February	563,845	566,236	577,354	646,021	708,163	811,584	833,566	3,707,017	730,905	4,285,291	-12.31%	15.60%
March	427,259	461,022	458,329	488,500	547,037	602,265	639,123	4,346,140	617,184	4,902,475	-3.43%	12.80%
April	457,790	430,902	514,474	515,333	512,342	609,667	667,237	5,013,377				
May	576,330	557,748	598,418	591,833	792,405	795,909	822,608	5,835,985				
June	467,350	502,735	534,409	560,372	698,441	698,469	699,017	6,535,002				
July	467,298	568,397	529,547	555,480	651,804	707,795	850,784	7,385,786				
August	517,103	598,256	562,637	656,930	745,461	787,645	830,227	8,216,010				
September	464,046	480,972	518,839	555,026	645,866	695,822	726,585	8,942,595				
	5,849,188	6,038,902	6,268,343	6,704,892	7,702,657	8,368,689	8,942,595		4,902,475			

# Sales Tax Analysis



# Daily Workforce Inflow & Outflow for Mount Pleasant.



## What it means:

The latest (2020, **NOT** 2023 data) available Census data indicate there were 14,258 employment opportunities in Mount Pleasant which were filled by only 3,905 workers who actually resided in Mount Pleasant. The majority (ie. 10,353 workers) commuted from outside city limits to employment opportunities within Mount Pleasant.

This phenomenon highlights the predictable, deep-rooted commuter ethic in the region. Workers will commute for gainful employment in order to live where they desire within the region's myriad offerings (e.g. lakes, forest, hyper-rural towns, and/or country-living).

This phenomenon, along with primary research, is MPEDC's substantiation for its 60-minute drivetime workforce of almost 500,000.

## \*Mount Pleasant-specific Data

**Interpretation:** MPEDC believes hundreds of workers in Mount Pleasant are forced to find housing outside of the city and county due to a lack of housing. This was true in 2019 and has been exacerbated by 2021 with large expansions occurring with major employers and new retailers opening operations since 2019 (e.g. Atwoods, Papa Johns, Long John Silvers, Williams Chicken, Starbucks, ALDI, and Wingstop)

Inflow/Outflow Job Counts (All Jobs) 2020		
	Count	Share
<a href="#">Employed in the Selection Area</a>	14,258	100.0%
<a href="#">Employed in the Selection Area but Living Outside</a>	10,353	72.6%
<a href="#">Employed and Living in the Selection Area</a>	3,905	27.4%
<a href="#">Living in the Selection Area</a>	7,334	100.0%
<a href="#">Living in the Selection Area but Employed Outside</a>	3,429	46.8%
<a href="#">Living and Employed in the Selection Area</a>	3,905	53.2%

# Daily Workforce Inflow & Outflow for Mount Pleasant.

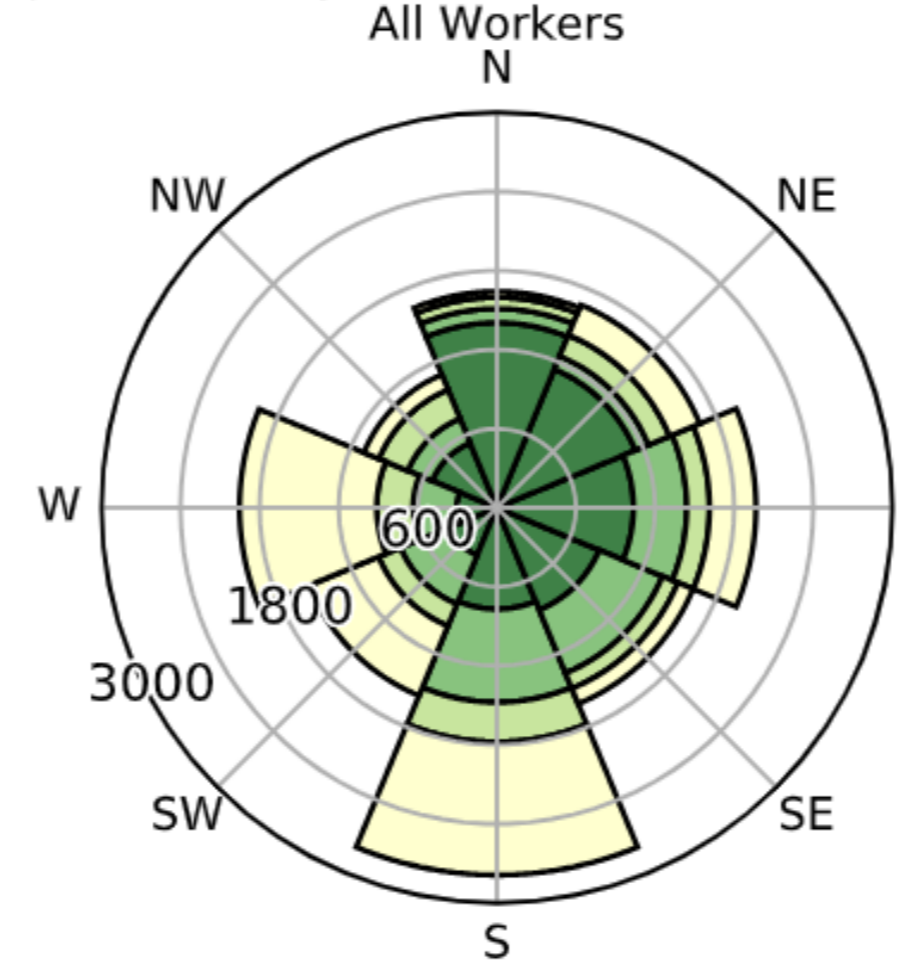
## What it means:

The latest (2020, NOT 2023 data) available Census data indicate there were 14,258 employment opportunities in Mount Pleasant which were filled by only 3,905 workers who actually resided in Mount Pleasant. The majority (ie. 10,353 workers) commuted from outside city limits to employment opportunities within Mount Pleasant.

This phenomenon highlights the predictable, deep-rooted commuter ethic in the region. Workers will commute for gainful employment in order to live where they desire within the region's myriad offerings (e.g. lakes, forest, hyper-rural towns, and/or country-living).

This phenomenon, along with primary research, is MPEDC's substantiation for its 60-minute drivetime workforce of almost 500,000.

Job Counts by Distance/Direction in 2020



Jobs Counts by Places (Cities, CDPs, etc.)  
Where Workers Live - All Jobs

	2020	
	Count	Share
<b>All Places (Cities, CDPs, etc.)</b>	14,258	100.0%
Mount Pleasant city, TX	3,905	27.4%
Pittsburg city, TX	554	3.9%
Texarkana city, TX	173	1.2%
Mount Vernon town, TX	154	1.1%
Daingerfield city, TX	136	1.0%
Dallas city, TX	130	0.9%
Naples city, TX	120	0.8%
Sulphur Springs city, TX	111	0.8%
Longview city, TX	104	0.7%
Paris city, TX	100	0.7%
<b>All Other Locations</b>	8,771	61.5%

NAICS Industry Sector

	2020	
	Count	Share
Agriculture, Forestry, Fishing and Hunting	19	0.2%
Mining, Quarrying, and Oil and Gas Extraction	1	0.0%
Utilities	40	0.4%
Construction	168	1.5%
Manufacturing	5,308	47.1%
Wholesale Trade	758	6.7%
Retail Trade	1,290	11.4%
Transportation and Warehousing	99	0.9%
Information	35	0.3%
Finance and Insurance	506	4.5%
Real Estate and Rental and Leasing	72	0.6%
Professional, Scientific, and Technical Services	114	1.0%
Management of Companies and Enterprises	7	0.1%
Administration & Support, Waste Management and Remediation	540	4.8%
Educational Services	5	0.0%
Health Care and Social Assistance	1,257	11.2%
Arts, Entertainment, and Recreation	34	0.3%
Accommodation and Food Services	826	7.3%
Other Services (excluding Public Administration)	191	1.7%
Public Administration	0	0.0%

Jobs by Distance - Work Census Block to Home Census Block

	2020	
	Count	Share
<b>Total All Jobs</b>	14,258	100.0%
Less than 10 miles	6,419	45.0%
10 to 24 miles	2,773	19.4%
25 to 50 miles	1,552	10.9%
Greater than 50 miles	3,514	24.6%

## \*Mount Pleasant-specific Data

**Interpretation:** MPEDC believes hundreds of workers in Mount Pleasant are forced to find housing outside of the city and county due to a lack of housing. This was true in 2019 and has been exacerbated by 2021 with large expansions occurring with major employers and new retailers opening operations since 2019 (e.g. Atwoods, Papa Johns, Long John Silvers, Williams Chicken, Starbucks, ALDI, and Wingstop)