

CITY OF MOUNT PLEASANT, TX & REGIONAL SALES TAX & EMPLOYMENT MONTHLY UPDATE

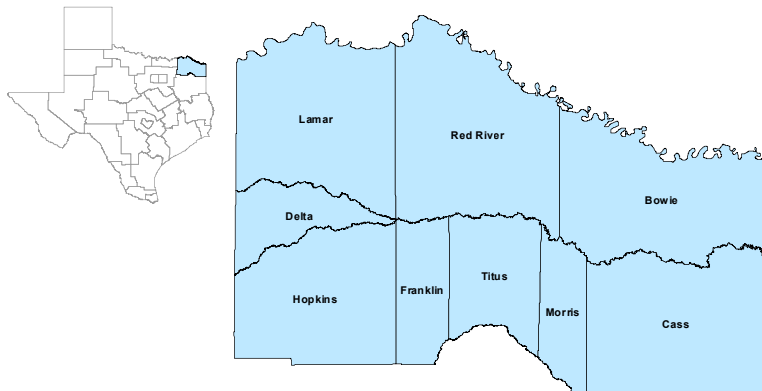


www.mpedc.org

903.572.6602

Updated on: 09/27/2023

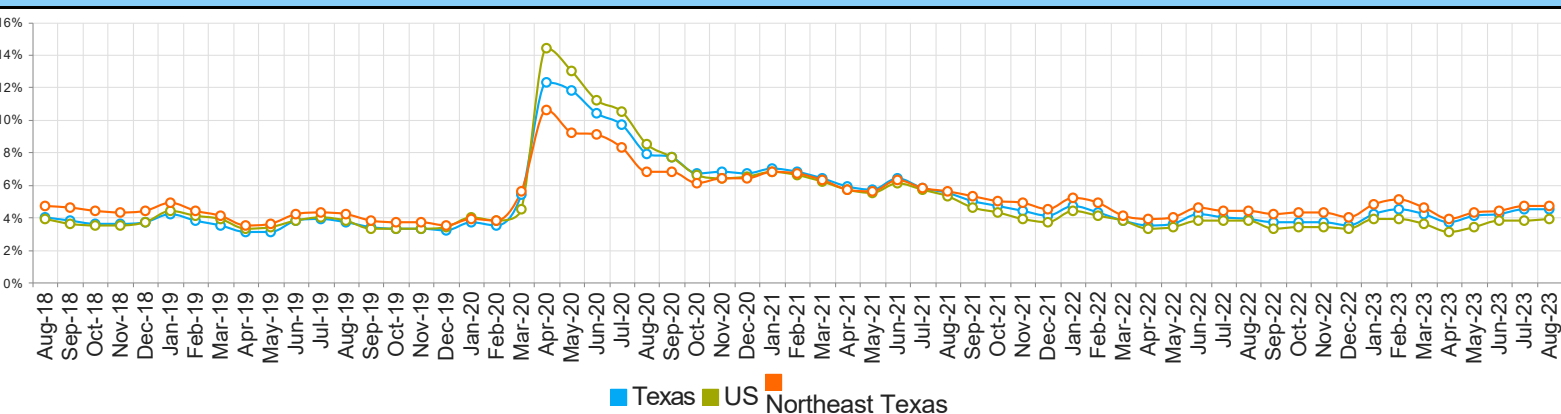
Northeast Texas Workforce Development Area



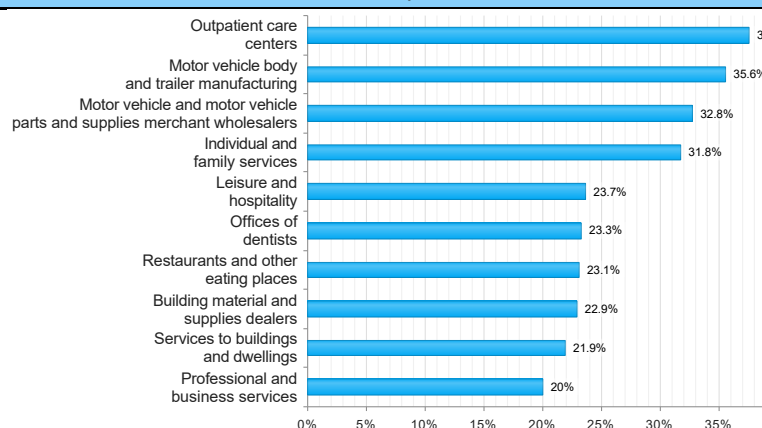
August 2023

WDA Labor Force Statistics				
	Aug-23	Jul-23	Aug-22	Yearly Change
Civilian Labor Force	126,409	126,391	124,201	2,208
Employed	120,486	120,452	118,695	1,791
Unemployed	5,923	5,939	5,506	417
Unemployment Rate	4.7%	4.7%	4.4%	0.3%
Texas Labor Force Statistics				
	Aug-23	Jul-23	Aug-22	Yearly Change
Civilian Labor Force	15,188,537	15,180,276	14,674,216	514,321
Employed	14,502,948	14,497,230	14,094,855	408,093
Unemployed	685,589	683,046	579,361	106,228
Unemployment Rate	4.5%	4.5%	3.9%	0.6%
US Labor Force Statistics				
	Aug-23	Jul-23	Aug-22	Yearly Change
Civilian Labor Force	168,049,000	168,354,000	164,971,000	3,078,000
Employed	161,427,000	161,982,000	158,714,000	2,713,000
Unemployed	6,623,000	6,372,000	6,256,000	367,000
Unemployment Rate	3.9%	3.8%	3.8%	0.1%
Continued Claims for the Week of the 12th				
	Aug-23	Jul-23	Aug-22	Yearly Change
WDA	735	792	736	-1
Texas	114,748	120,995	81,276	33,472

Historical Unemployment Rates



Projected Top Ten Fastest Growing Industries in WDA (% Growth 2020-2030)



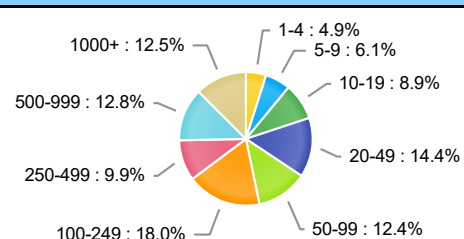
Average Weekly Wage (1st Quarter 2023)

	Q1 2023	Q4 2022	Q1 2022	Quarterly Change	Yearly Change
WDA	\$970	\$966	\$891	\$4	\$79
Texas	\$1,480	\$1,372	\$1,369	\$108	\$111
US	\$1,465	\$1,385	\$1,374	\$80	\$91

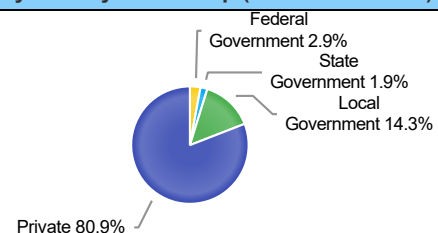
Employment by Industry (1st Quarter 2023, Percent Change)

Industry	Employment	% of Total	% Quarterly Change	% Yearly Change
Natural Resources and Mining	1,284	1.1%	19.8%	19.6%
Construction	5,747	5.1%	-1.1%	6.5%
Manufacturing	19,021	16.9%	-2.2%	-1.4%
Trade, Transportation and Utilities	23,496	20.9%	-1.6%	-1.5%
Information	579	0.5%	-3.7%	0.9%
Financial Activities	4,397	3.9%	2.9%	4.2%
Professional and Business Services	6,966	6.2%	-1.4%	-1.4%
Education and Health Services	31,466	28.0%	-1.5%	2.0%
Leisure and Hospitality	11,018	9.8%	0.1%	2.9%
Other Services	2,345	2.1%	-2.9%	-2.4%
Public Administration	6,072	5.4%	-1.0%	-3.5%

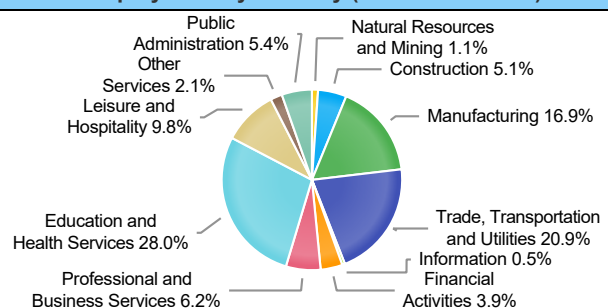
Employment by Size Class (1st Quarter 2023)



Employment by Ownership (1st Quarter 2023)



Employment by Industry (1st Quarter 2023)



CITY OF MOUNT PLEASANT, TX

City Sales and Use Tax Comparison Summary

City	Net Payment This Period	Comparable Payment Prior Year	% of Change	Payment YTD	Prior Year Payment YTD	% of Change
Mount Pleasant	\$726,585.02	\$695,821.50	4.42%	\$6,778,909.06	\$6,413,585.55	5.69%
Daingerfield	\$50,077.31	\$50,099.53	-0.04%	\$489,393.37	\$454,731.79	7.62%
Mount Vernon	\$121,160.91	\$97,476.18	24.29%	\$910,264.32	\$915,668.12	-0.59%
Paris	\$1,029,141.57	\$971,353.60	5.94%	\$9,393,986.46	\$8,597,383.13	9.26%
Pittsburg	\$118,221.43	\$109,907.04	7.56%	\$1,244,033.88	\$1,031,504.36	20.60%
Sulphur Springs	\$736,173.29	\$700,950.46	5.02%	\$6,631,458.96	\$6,377,113.01	3.98%

12-Month Mt. Pleasant Monthly Employment, Labor, Unemployment, & Unemployment Rate

P: Preliminary

Year	Month	Labor Force	Employment	Unemployment	Unemployment Rate
2023	Aug	14166(P)	13479(P)	687(P)	4.8(P)
2023	Jul	14171	13490	681	4.8
2023	June	13899	13277	622	4.5
2023	May	13765	13187	578	4.2
2023	Apr	13928	13401	527	3.8
2023	Mar	14277	13621	656	4.6
2023	Feb	14191	13504	687	4.8
2023	Jan	13869	13223	646	4.7
2022	Dec	13638	13127	511	3.7
2022	Nov	13646	13083	563	4.1
2022	Oct	13672	13099	573	4.2
2022	Sep	13689	13107	582	4.3

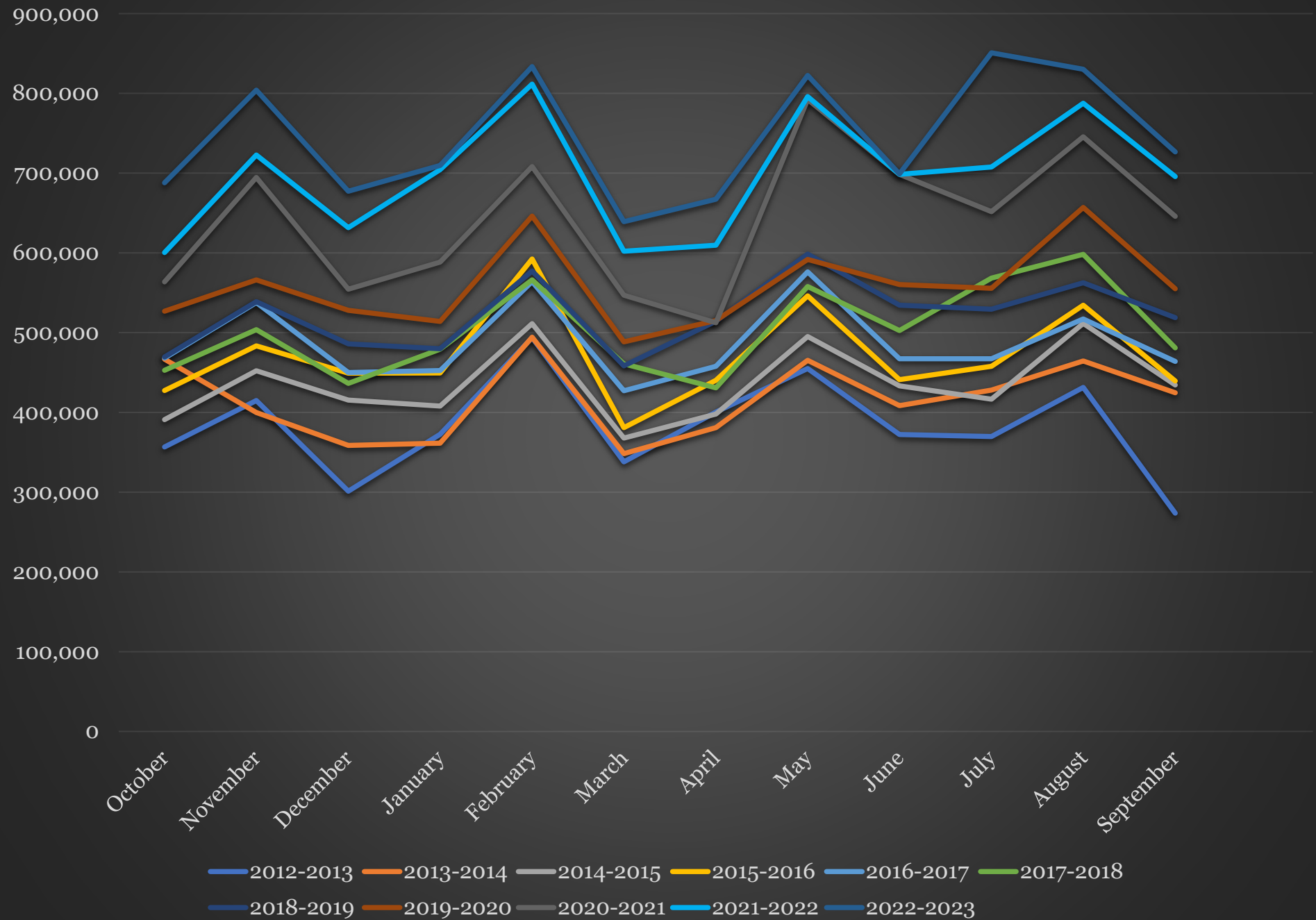
TEXARKANA LAUS															
		August-23				July-23					August-22				
Area	Area Type	Labor Force	Employment	Unemployment	Rate	Labor Force	Employment	Unemployment	Rate	Labor Force	Employment	Unemployment	Rate		
Bowie	County	39,140	37,319	1,821	4.7	39,159	37,302	1,857	4.7	38,336	36,509	1,827	4.8		
Cass	County	11,962	11,320	642	5.4	11,942	11,304	638	5.3	11,932	11,367	565	4.7		
Delta	County	2,571	2,453	118	4.6	2,578	2,450	128	5.0	2,508	2,405	103	4.1		
Franklin	County	5,644	5,413	231	4.1	5,650	5,429	221	3.9	5,328	5,155	173	3.2		
Hopkins	County	18,689	17,988	701	3.8	18,614	17,921	693	3.7	18,218	17,619	599	3.3		
Lamar	County	24,632	23,491	1,141	4.6	24,644	23,509	1,135	4.6	24,454	23,408	1,046	4.3		
Morris	County	4,519	4,218	301	6.7	4,532	4,219	313	6.9	4,486	4,197	289	6.4		
Red River	County	5,086	4,805	281	5.5	5,101	4,828	273	5.4	5,153	4,865	288	5.6		
Titus	County	14,166	13,479	687	4.8	14,171	13,490	681	4.8	13,786	13,170	616	4.5		
Paris	City	11,834	11,231	603	5.1	11,842	11,240	602	5.1	11,752	11,191	561	4.8		
Texarkana	City	14,939	14,253	686	4.6	14,988	14,247	741	4.9	14,682	13,944	738	5.0		

Mount Pleasant is in the Texarkana LAUS area which encloses 9 counties (Bowie, Cass, Delta, Franklin, Hopkins, Lamar, Morris, Red River, Titus) and 2 cities (Paris and Texarkana TX).

- [LAUS \(Local Area Unemployment Statistics\)](#)
- [WDA \(Workforce Development Area\)](#)
- <http://netxworkforce.org>

SALES TAX ANALYSIS 2022-2023												
											Increase/	Increase/
	Fiscal Year	Fiscal Year	Fiscal Year	Fiscal Year	Fiscal Year	Fiscal Year	Fiscal Year		Fiscal Year		Decrease	Decrease
Month	2015- 2016	2016-2017	2017-2018	2018-2019	2019-2020	2020- 2021	2021- 2022	YTD	2022- 2023	YTD	Monthly	YTD
October	427,503	468,023	452,936	469,460	527,009	563,685	600,477	600,477	687,931	687,931	14.56%	14.56%
November	483,487	537,694	503,890	538,937	566,266	694,632	722,839	1,323,316	804,221	1,492,152	11.25%	12.76%
December	449,230	450,032	436,514	486,070	528,108	554,464	631,776	1,955,092	671,535	2,163,687	6.29%	10.67%
January	449,471	452,418	479,294	479,869	514,014	588,357	704,431	2,659,523	709,764	2,873,451	0.75%	0.08%
February	592,475	563,845	566,236	577,354	646,021	708,163	811,584	3,471,107	833,566	3,707,017	2.70%	6.79%
March	380,986	427,259	461,022	458,329	488,500	547,037	602,265	4,073,372	639,123	4,346,140	6.11%	6.70%
April	440,156	457,790	430,902	514,474	515,333	512,342	609,667	4,683,049	667,237	5,013,377	9.44%	7.05%
May	546,057	576,330	557,748	598,418	591,833	792,405	795,909	5,478,958	822,608	5,835,985	3.35%	6.52%
June	441,246	467,350	502,735	534,409	560,372	698,441	698,469	6,177,427	699,017	6,535,002	0.07%	5.79%
July	457,958	467,298	568,397	529,547	555,480	651,804	707,795	6,885,222	850,784	7,385,786	20.20%	7.27%
August	534,430	517,103	598,256	562,637	656,930	745,461	787,645	7,672,867	830,227	8,216,010	5.40%	7.08%
September	439,577	464,046	480,972	518,839	555,026	645,866	695,822	8,368,689	726,585	8,942,595	4.42%	6.86%
	5,642,575	5,849,188	6,038,902	6,268,343	6,704,892	7,702,657	8,368,689		8,942,595			

Sales Tax Analysis



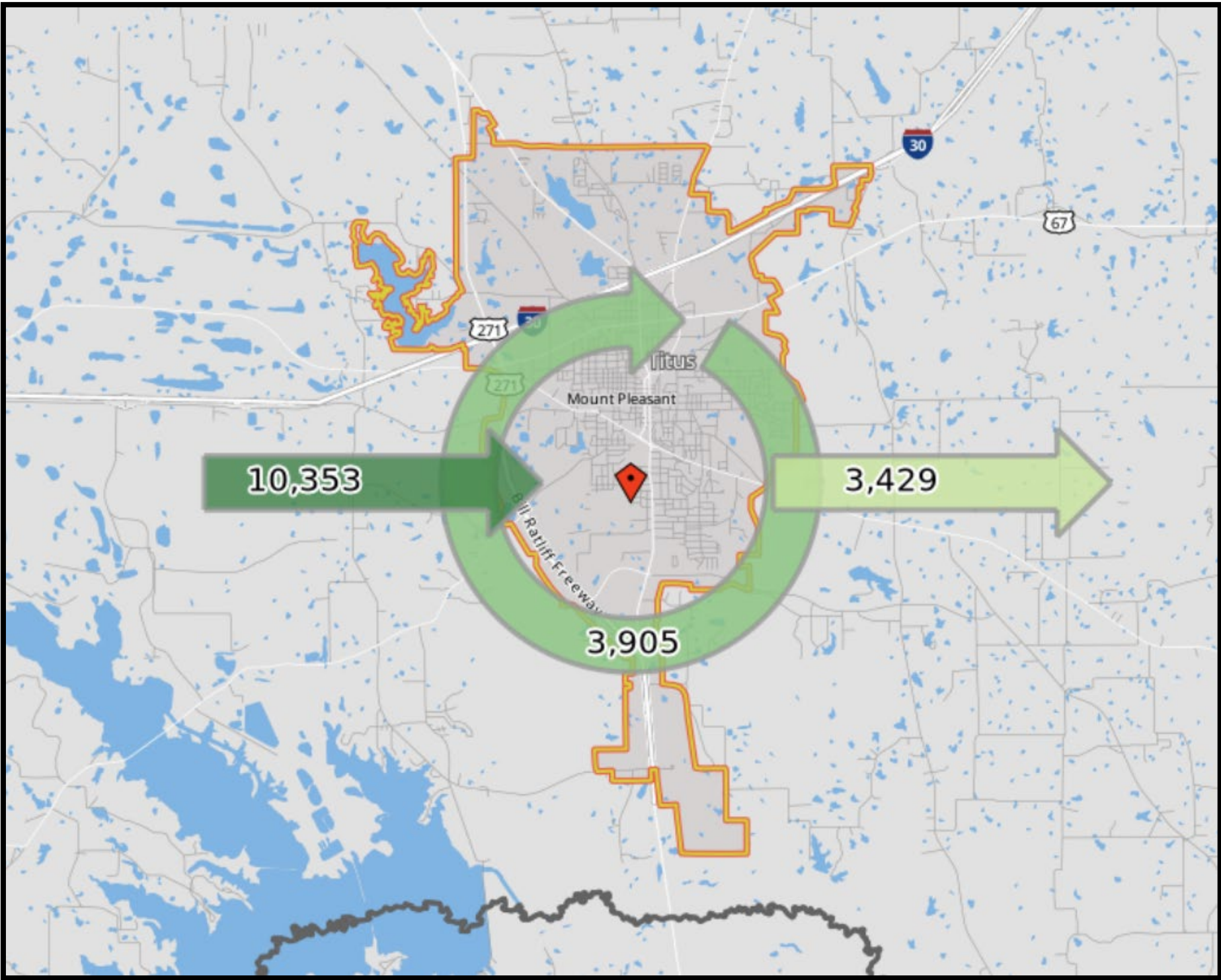
Daily Workforce Inflow & Outflow for Mount Pleasant.

What it means:

The latest (2020, **NOT** 2023 data) available Census data indicate there were 14,258 employment opportunities in Mount Pleasant which were filled by only 3,905 workers who actually resided in Mount Pleasant. The majority (ie. 10,353 workers) commuted from outside city limits to employment opportunities within Mount Pleasant.

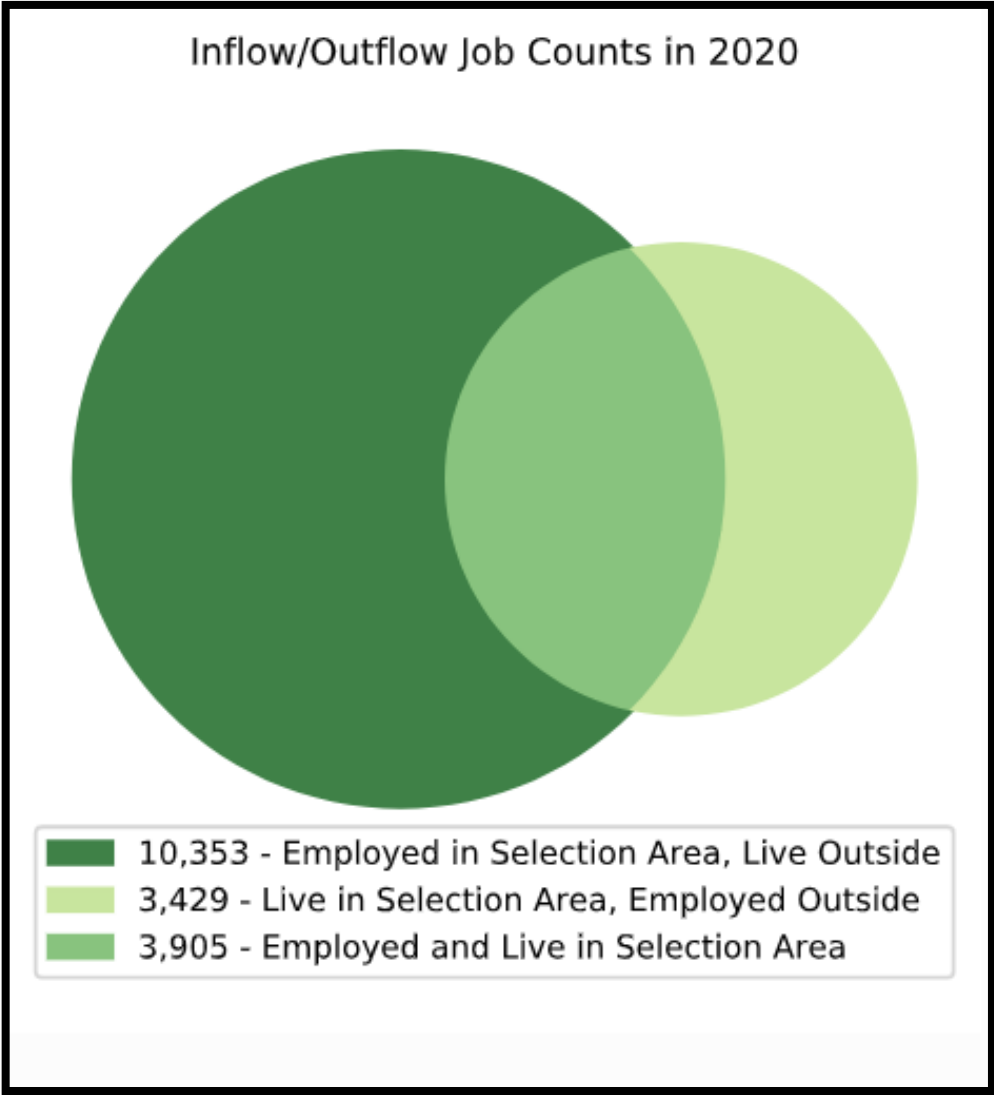
This phenomenon highlights the predictable, deep-rooted commuter ethic in the region. Workers will commute for gainful employment in order to live where they desire within the region’s myriad offerings (e.g. lakes, forest, hyper-rural towns, and/or country-living).

This phenomenon, along with primary research, is MPEDC’s substantiation for its 60-minute drivetime workforce of almost 500,000.



*Mount Pleasant-specific Data

Interpretation: MPEDC believes hundreds of workers in Mount Pleasant are forced to find housing outside of the city and county due to a lack of housing. This was true in 2019 and has been exacerbated by 2021 with large expansions occurring with major employers and new retailers opening operations since 2019 (e.g. Atwoods, Papa Johns, Long John Silvers, Williams Chicken, Starbucks, ALDI, and Wingstop)



Inflow/Outflow Job Counts (All Jobs) 2020		
	Count	Share
Employed in the Selection Area	14,258	100.0%
Employed in the Selection Area but Living Outside	10,353	72.6%
Employed and Living in the Selection Area	3,905	27.4%
Living in the Selection Area	7,334	100.0%
Living in the Selection Area but Employed Outside	3,429	46.8%
Living and Employed in the Selection Area	3,905	53.2%

Daily Workforce Inflow & Outflow for Mount Pleasant.

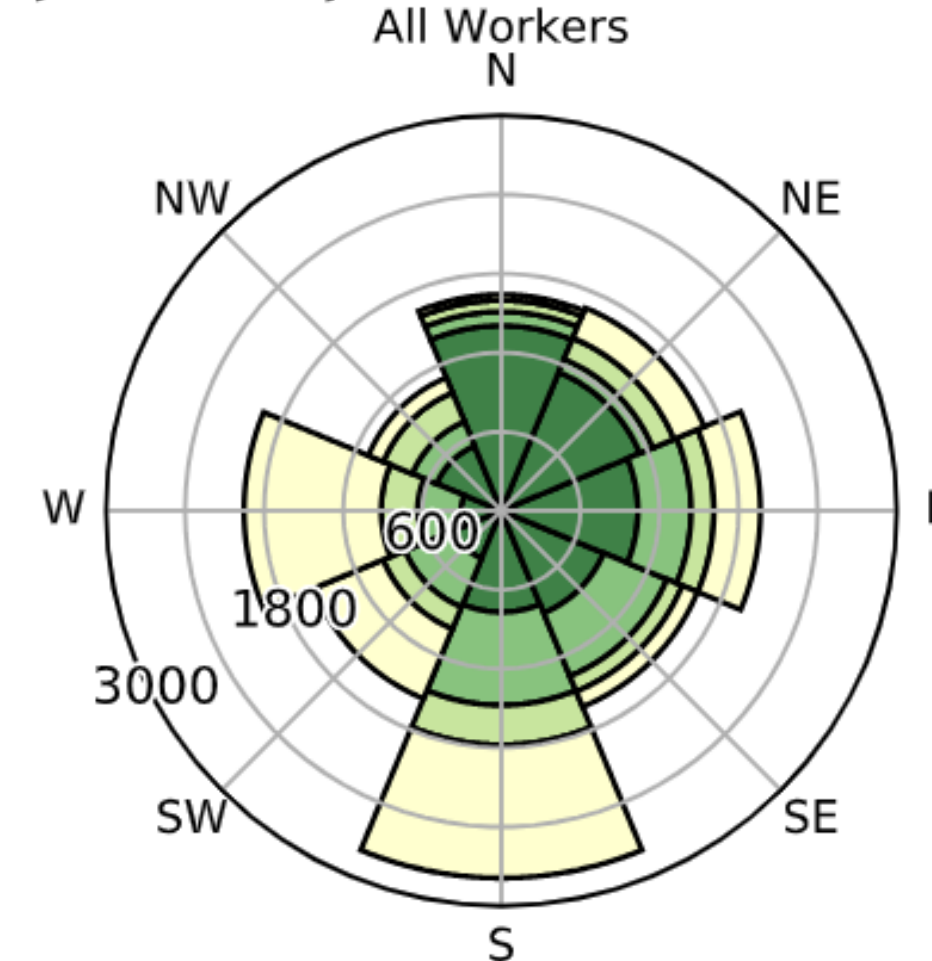
What it means:

The latest (2020, **NOT** 2023 data) available Census data indicate there were 14,258 employment opportunities in Mount Pleasant which were filled by only 3,905 workers who actually resided in Mount Pleasant. The majority (ie. 10,353 workers) commuted from outside city limits to employment opportunities within Mount Pleasant.

This phenomenon highlights the predictable, deep-rooted commuter ethic in the region. Workers will commute for gainful employment in order to live where they desire within the region's myriad offerings (e.g. lakes, forest, hyper-rural towns, and/or country-living).

This phenomenon, along with primary research, is MPEDC's substantiation for its 60-minute drivetime workforce of almost 500,000.

Job Counts by Distance/Direction in 2020



Jobs Counts by Places (Cities, CDPs, etc.)
Where Workers Live - All Jobs

	2020	
	Count	Share
All Places (Cities, CDPs, etc.)	14,258	100.0%
Mount Pleasant city, TX	3,905	27.4%
Pittsburg city, TX	554	3.9%
Texarkana city, TX	173	1.2%
Mount Vernon town, TX	154	1.1%
Daingerfield city, TX	136	1.0%
Dallas city, TX	130	0.9%
Naples city, TX	120	0.8%
Sulphur Springs city, TX	111	0.8%
Longview city, TX	104	0.7%
Paris city, TX	100	0.7%
All Other Locations	8,771	61.5%

NAICS Industry Sector

	2020	
	Count	Share
Agriculture, Forestry, Fishing and Hunting	19	0.2%
Mining, Quarrying, and Oil and Gas Extraction	1	0.0%
Utilities	40	0.4%
Construction	168	1.5%
Manufacturing	5,308	47.1%
Wholesale Trade	758	6.7%
Retail Trade	1,290	11.4%
Transportation and Warehousing	99	0.9%
Information	35	0.3%
Finance and Insurance	506	4.5%
Real Estate and Rental and Leasing	72	0.6%
Professional, Scientific, and Technical Services	114	1.0%
Management of Companies and Enterprises	7	0.1%
Administration & Support, Waste Management and Remediation	540	4.8%
Educational Services	5	0.0%
Health Care and Social Assistance	1,257	11.2%
Arts, Entertainment, and Recreation	34	0.3%
Accommodation and Food Services	826	7.3%
Other Services (excluding Public Administration)	191	1.7%
Public Administration	0	0.0%

Jobs by Distance - Work Census Block to Home Census Block

	2020	
	Count	Share
Total All Jobs	14,258	100.0%
Less than 10 miles	6,419	45.0%
10 to 24 miles	2,773	19.4%
25 to 50 miles	1,552	10.9%
Greater than 50 miles	3,514	24.6%

*Mount Pleasant-specific Data

Interpretation: MPEDC believes hundreds of workers in Mount Pleasant are forced to find housing outside of the city and county due to a lack of housing. This was true in 2019 and has been exacerbated by 2021 with large expansions occurring with major employers and new retailers opening operations since 2019 (e.g. Atwoods, Papa Johns, Long John Silvers, Williams Chicken, Starbucks, ALDI, and Wingstop)