

CITY OF MOUNT PLEASANT, TX & REGIONAL SALES TAX & EMPLOYMENT MONTHLY UPDATE

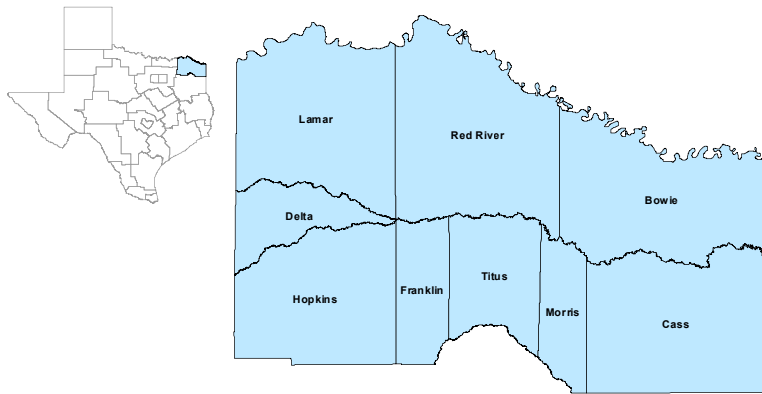


www.mpedc.org

903.572.6602

Updated on: 05/23/2023

Northeast Texas Workforce Development Area



April 2023

WDA Labor Force Statistics

	Apr-23	Mar-23	Apr-22	Yearly Change
Civilian Labor Force	125,360	127,320	125,168	192
Employed	120,487	121,409	120,304	183
Unemployed	4,873	5,911	4,864	9
Unemployment Rate	3.9%	4.6%	3.9%	0.0%

Texas Labor Force Statistics

	Apr-23	Mar-23	Apr-22	Yearly Change
Civilian Labor Force	15,019,711	15,118,242	14,592,934	426,777
Employed	14,468,512	14,486,045	14,076,764	391,748
Unemployed	551,199	632,197	516,170	35,029
Unemployment Rate	3.7%	4.2%	3.5%	0.2%

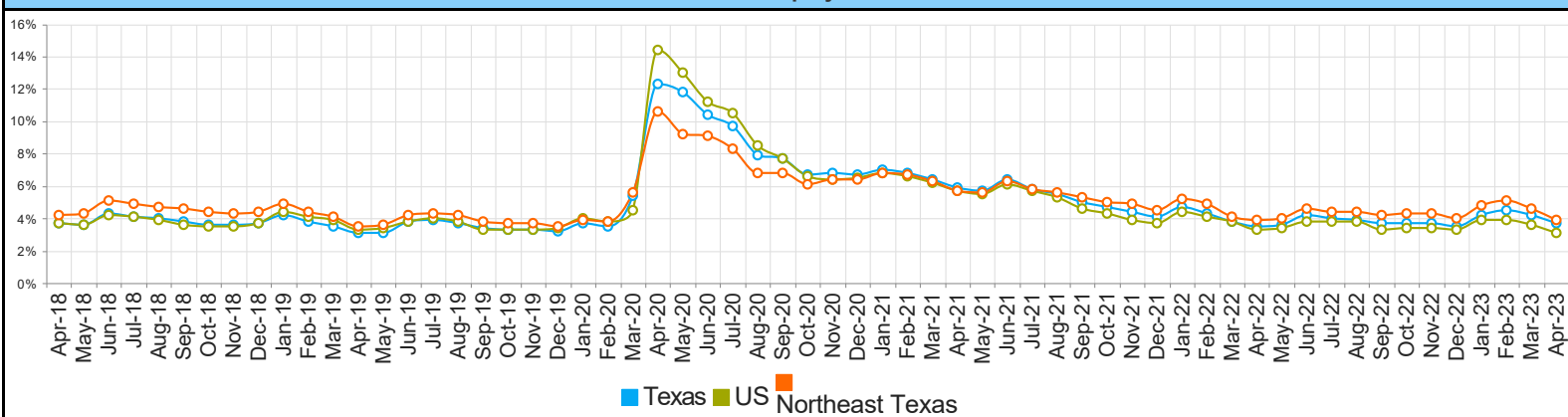
US Labor Force Statistics

	Apr-23	Mar-23	Apr-22	Yearly Change
Civilian Labor Force	166,221,000	166,783,000	163,449,000	2,772,000
Employed	161,075,000	160,741,000	157,991,000	3,084,000
Unemployed	5,146,000	6,043,000	5,458,000	-312,000
Unemployment Rate	3.1%	3.6%	3.3%	-0.2%

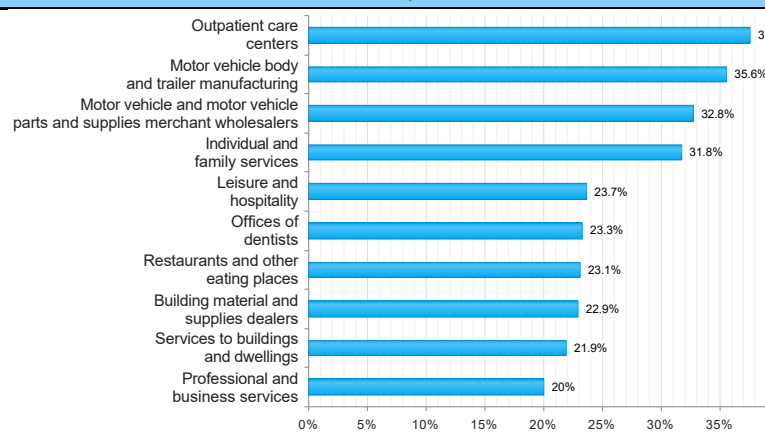
Continued Claims for the Week of the 12th

	Apr-23	Mar-23	Apr-22	Yearly Change
WDA	688	888	648	40
Texas	100,999	102,867	73,040	27,959

Historical Unemployment Rates



Projected Top Ten Fastest Growing Industries in WDA (% Growth 2020-2030)



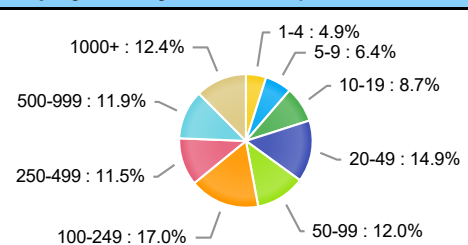
Average Weekly Wage (4th Quarter 2022)

	Q4 2022	Q3 2022	Q4 2021	Quarterly Change	Yearly Change
WDA	\$961	\$942	\$956	\$19	\$5
Texas	\$1,372	\$1,332	\$1,375	\$40	\$-3
US	\$1,385	\$1,334	\$1,418	\$51	\$-33

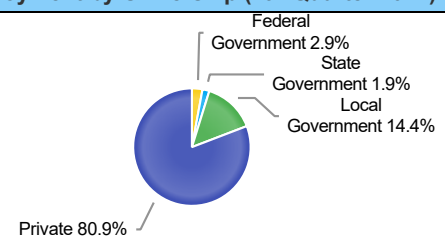
Employment by Industry (4th Quarter 2022, Percent Change)

Industry	Employment	% of Total	% Quarterly Change	% Yearly Change
Natural Resources and Mining	1,069	0.9%	1.3%	-1.7%
Construction	5,797	5.1%	3.3%	5.5%
Manufacturing	19,443	17.2%	-1.3%	1.1%
Trade, Transportation and Utilities	23,888	21.1%	0.8%	-0.7%
Information	599	0.5%	-0.5%	3.1%
Financial Activities	4,210	3.7%	-1.5%	-6.8%
Professional and Business Services	7,059	6.2%	-3.7%	-3.9%
Education and Health Services	31,683	28.0%	3.0%	2.0%
Leisure and Hospitality	10,951	9.7%	-3.1%	0.1%
Other Services	2,408	2.1%	-2.2%	-1.1%
Public Administration	6,133	5.4%	-0.4%	-4.6%

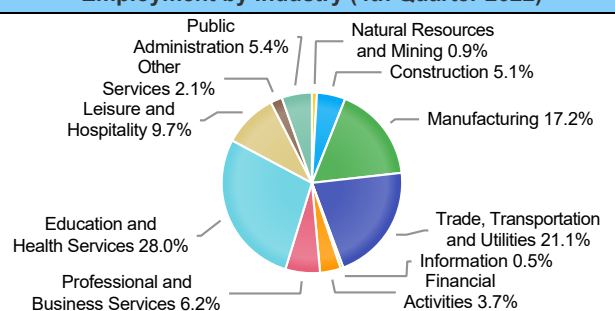
Employment by Size Class (4th Quarter 2022)



Employment by Ownership (4th Quarter 2022)



Employment by Industry (4th Quarter 2022)



TEXARKANA LAUS															
		April-23				March-23					April-22				
Area	Area Type	Labor Force	Employment	Unemployment	Rate	Labor Force	Employment	Unemployment	Rate	Labor Force	Employment	Unemployment	Rate		
Bowie	County	38,829	37,270	1,559	4.0	39,084	37,288	1,796	4.6	38,707	37,062	1,645	4.2		
Cass	County	11,909	11,394	515	4.3	12,140	11,550	590	4.9	12,111	11,602	509	4.2		
Delta	County	2,560	2,455	105	4.1	2,612	2,482	130	5.0	2,521	2,434	87	3.5		
Franklin	County	5,583	5,423	160	2.9	5,558	5,360	198	3.6	5,408	5,268	140	2.6		
Hopkins	County	18,560	17,992	568	3.1	19,127	18,292	835	4.4	18,449	17,901	548	3.0		
Lamar	County	24,518	23,546	972	4.0	24,870	23,707	1,163	4.7	24,668	23,741	927	3.8		
Morris	County	4,422	4,175	247	5.6	4,558	4,265	293	6.4	4,401	4,146	255	5.8		
Red River	County	5,051	4,832	219	4.3	5,094	4,844	250	4.9	5,249	5,003	246	4.7		
Titus	County	13,928	13,400	528	3.8	14,277	13,621	656	4.6	13,654	13,147	507	3.7		
Paris	City	11,811	11,257	554	4.7	11,983	11,334	649	5.4	11,836	11,351	485	4.1		
Texarkana	City	14,865	14,235	630	4.2	14,938	14,241	697	4.7	14,802	14,155	647	4.4		

Mount Pleasant is in the Texarkana LAUS area which encloses 9 counties (Bowie, Cass, Delta, Franklin, Hopkins, Lamar, Morris, Red River, Titus) and 2 cities (Paris and Texarkana TX).

- [LAUS \(Local Area Unemployment Statistics\)](#)
- [WDA \(Workforce Development Area\)](#)
- <http://netxworkforce.org>

CITY OF MOUNT PLEASANT, TX

City Sales and Use Tax Comparison Summary

City	Net Payment This Period	Comparable Payment Prior Year	% of Change	Payment YTD	Prior Year Payment YTD	% of Change
Mount Pleasant	\$822,608.14	\$795,909.29	3.35%	\$3,672,297.07	\$3,523,855.79	4.21%
Daingerfield	\$57,440.64	\$63,486.11	-9.52%	\$274,387.00	\$262,098.84	4.68%
Mount Vernon	\$111,049.47	\$114,389.29	-2.91%	\$480,207.62	\$522,516.02	-8.09%
Paris	\$1,139,960.98	\$1,025,280.84	11.18%	\$5,172,472.14	\$4,702,186.24	10.00%
Pittsburg	\$158,765.39	\$132,998.24	19.37%	\$739,155.93	\$563,742.95	31.11%
Sulphur Springs	\$820,302.26	\$741,394.15	10.64%	\$3,709,206.99	\$3,400,363.86	9.08%

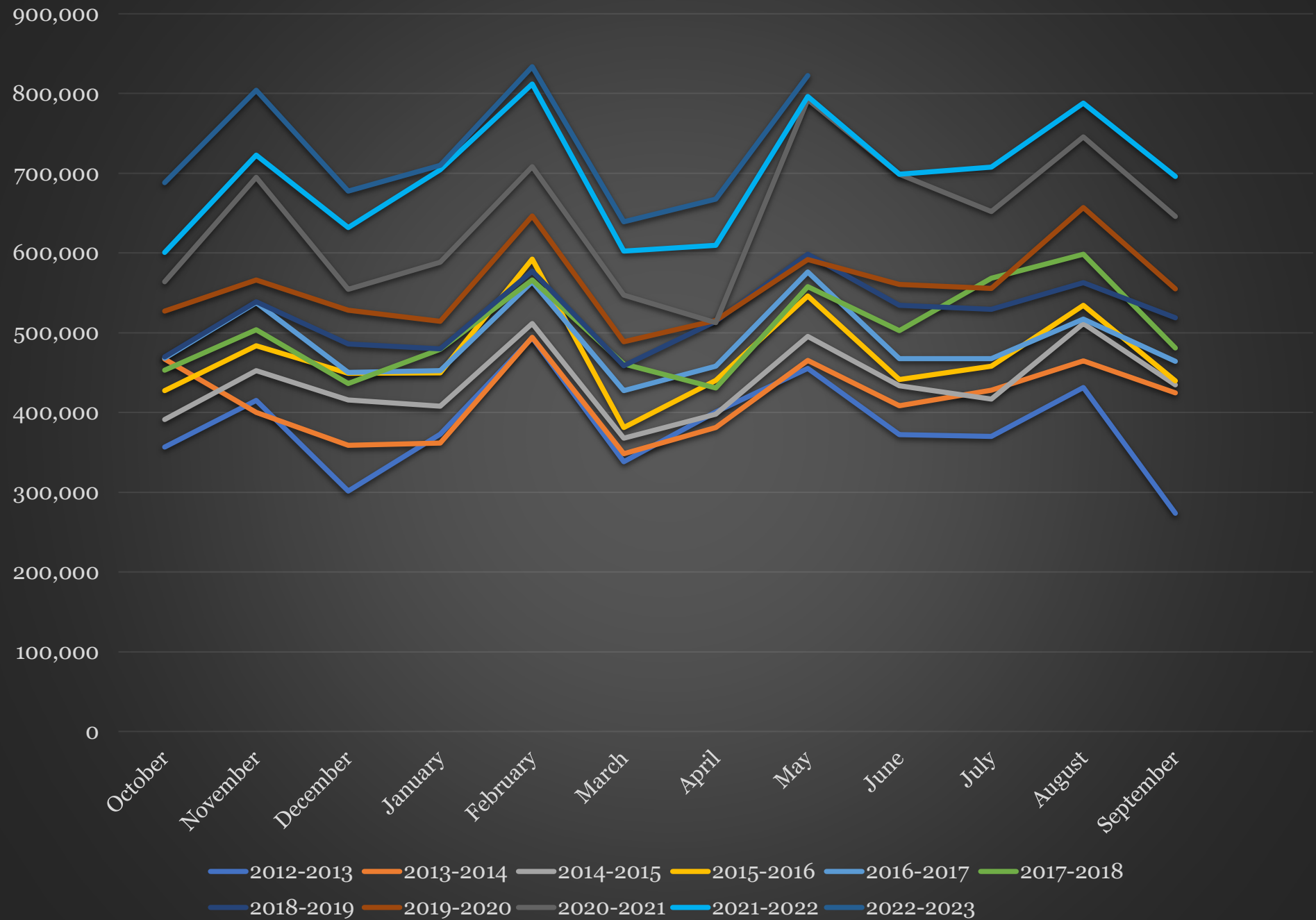
12-Month Mt. Pleasant Monthly Employment, Labor, Unemployment, & Unemployment Rate

P: Preliminary

Year	Month	Labor Force	Employment	Unemployment	Unemployment Rate
2022	Dec	13638	13127	511	3.7
2023	Jan	13869	13223	646	4.7
2023	Feb	14191	13504	687	4.8
2023	Mar	14275(P)	13616(P)	659(P)	4.6(P)
2022	Apr	13465	12977	488	3.6
2022	May	13570	13049	521	3.8
2022	Jun	13632	12967	665	4.9
2022	Jul	13698	13075	623	4.5
2022	Aug	13604	12996	608	4.5
2022	Sep	13689	13107	582	4.3
2022	Oct	13672	13099	573	4.2
2022	Nov	13646	13083	563	4.1

SALES TAX ANALYSIS 2022-2023												
											Increase/	Increase/
	Fiscal Year	Fiscal Year	Fiscal Year	Fiscal Year	Fiscal Year	Fiscal Year	Fiscal Year		Fiscal Year		Decrease	Decrease
Month	2015- 2016	2016-2017	2017-2018	2018-2019	2019-2020	2020- 2021	2021- 2022	YTD	2022- 2023	YTD	Monthly	YTD
October	427,503	468,023	452,936	469,460	527,009	563,685	600,477	600,477	687,931	687,931	14.56%	14.56%
November	483,487	537,694	503,890	538,937	566,266	694,632	722,839	1,323,316	804,221	1,492,152	11.25%	12.76%
December	449,230	450,032	436,514	486,070	528,108	554,464	631,776	1,955,092	671,535	2,163,687	6.29%	10.67%
January	449,471	452,418	479,294	479,869	514,014	588,357	704,431	2,659,523	709,764	2,873,451	0.75%	0.08%
February	592,475	563,845	566,236	577,354	646,021	708,163	811,584	3,471,107	833,566	3,707,017	2.70%	6.79%
March	380,986	427,259	461,022	458,329	488,500	547,037	602,265	4,073,372	639,123	4,346,140	6.11%	6.70%
April	440,156	457,790	430,902	514,474	515,333	512,342	609,667	4,683,049	667,237	5,013,377	9.44%	7.05%
May	546,057	576,330	557,748	598,418	591,833	792,405	795,909	5,478,958	822,608	5,835,985	3.35%	6.52%
June	441,246	467,350	502,735	534,409	560,372	698,441	698,469	6,177,427				
July	457,958	467,298	568,397	529,547	555,480	651,804	707,795	6,885,222				
August	534,430	517,103	598,256	562,637	656,930	745,461	787,645	7,672,867				
September	439,577	464,046	480,972	518,839	555,026	645,866	695,822	8,368,689				
	5,642,575	5,849,188	6,038,902	6,268,343	6,704,892	7,702,657	8,368,689		5,835,985			

Sales Tax Analysis



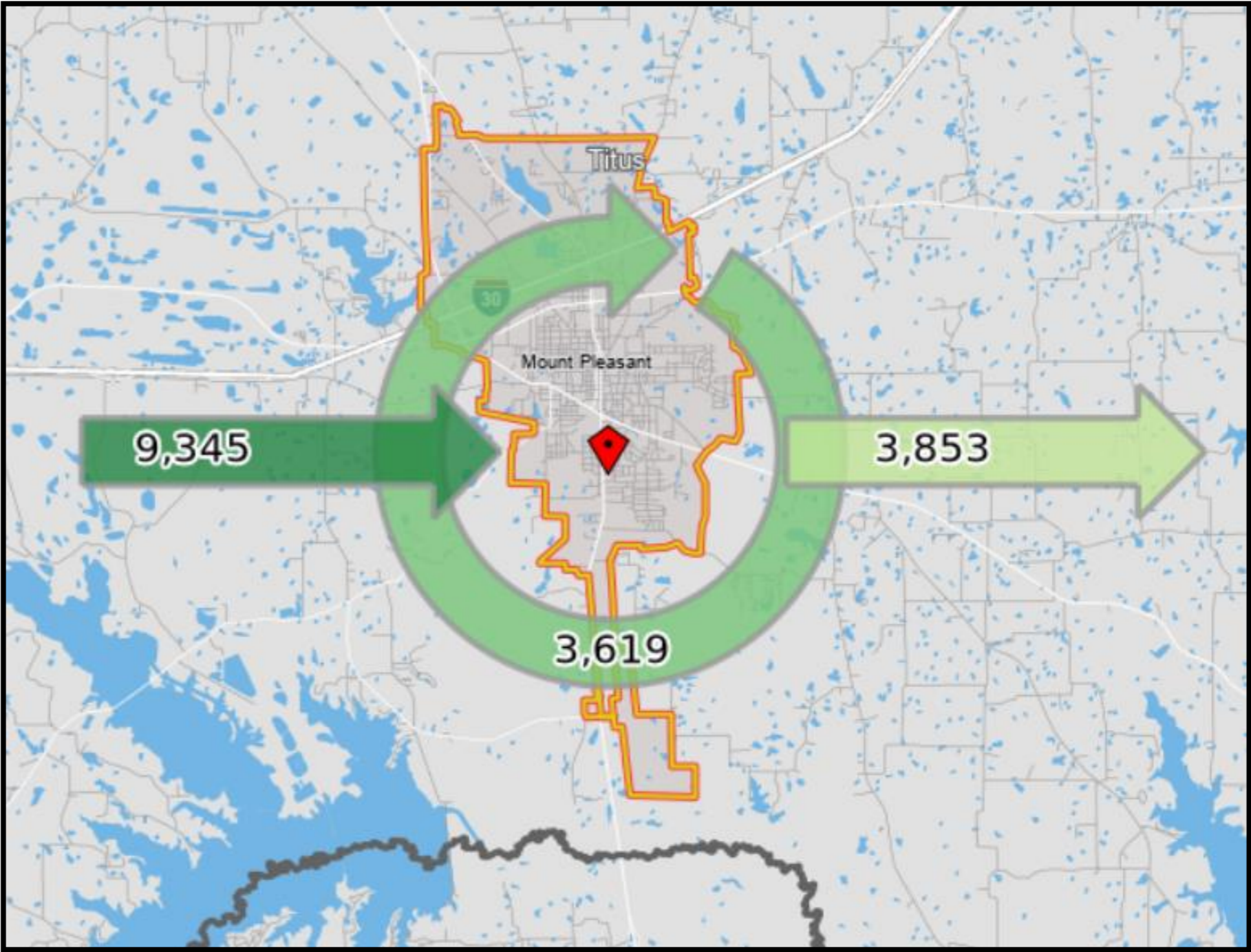
Daily Workforce Inflow & Outflow for Mount Pleasant.

What it means:

The latest (2019, **NOT** 2021 data) available Census data indicate there were 12,964 employment opportunities in Mount Pleasant which were filled by only 3,619 workers who actually resided in Mount Pleasant. The majority (ie. 9,345 workers) commuted from outside city limits to employment opportunities within Mount Pleasant.

This phenomenon highlights the predictable, deep-rooted commuter ethic in the region. Workers will commute for gainful employment in order to live where they desire within the region's myriad offerings (e.g. lakes, forest, hyper-rural towns, and/or country-living).

This phenomenon, along with primary research, is MPEDC's substantiation for its 60-minute drivetime workforce of almost 500,000.



*Mount Pleasant-specific Data

Interpretation: MPEDC believes hundreds of workers in Mount Pleasant are forced to find housing outside of the city and county due to a lack of housing. This was true in 2019 and has been exacerbated by 2021 with large expansions occurring with major employers and new retailers opening operations since 2019 (e.g. Atwoods, Papa Johns, Long John Silvers, Williams Chicken, Starbucks, ALDI, and Wingstop)

Inflow/Outflow Job Counts in 2019



Inflow/Outflow Job Counts (All Jobs)

	2019	
	Count	Share
Employed in the Selection Area	12,964	100.0%
Employed in the Selection Area but Living Outside	9,345	72.1%
Employed and Living in the Selection Area	3,619	27.9%
Living in the Selection Area	7,472	100.0%
Living in the Selection Area but Employed Outside	3,853	51.6%
Living and Employed in the Selection Area	3,619	48.4%

Daily Workforce Inflow & Outflow for Mount Pleasant.

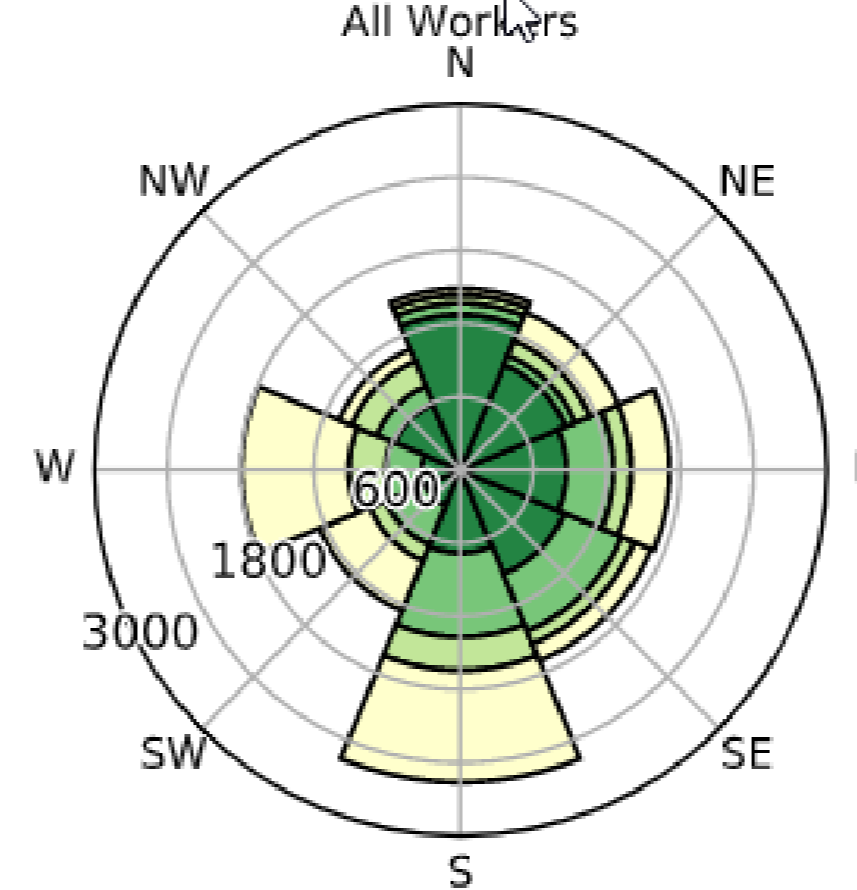
What it means:

The latest (2019, **NOT** 2021 data) available Census data indicate there were 12,964 employment opportunities in Mount Pleasant which were filled by only 3,619 workers who actually resided in Mount Pleasant. The majority (ie. 9,345 workers) commuted from outside city limits to employment opportunities within Mount Pleasant.

This phenomenon highlights the predictable, deep-rooted commuter ethic in the region. Workers will commute for gainful employment in order to live where they desire within the region's myriad offerings (e.g. lakes, forest, hyper-rural towns, and/or country-living).

This phenomenon, along with primary research, is MPEDC's substantiation for its 60-minute drivetime workforce of almost 500,000.

Job Counts by Distance/Direction in 2019
All Workers



Jobs Counts by Places (Cities, CDPs, etc.)
Where Workers Live - All Jobs

	2019	
	Count	Share
All Places (Cities, CDPs, etc.)	12,964	100.0%
Mount Pleasant city, TX	3,619	27.9%
Pittsburg city, TX	497	3.8%
Texarkana city, TX	193	1.5%
Daingerfield city, TX	169	1.3%
Mount Vernon town, TX	152	1.2%
Dallas city, TX	132	1.0%
Sulphur Springs city, TX	122	0.9%
Paris city, TX	120	0.9%
Longview city, TX	112	0.9%
Naples city, TX	107	0.8%
All Other Locations	7,741	59.7%

NAICS Industry Sector

	2019	
	Count	Share
Agriculture, Forestry, Fishing and Hunting	39	0.3%
Mining, Quarrying, and Oil and Gas Extraction	0	0.0%
Utilities	72	0.6%
Construction	225	1.7%
Manufacturing	4,619	35.6%
Wholesale Trade	210	1.6%
Retail Trade	1,432	11.0%
Transportation and Warehousing	137	1.1%
Information	49	0.4%
Finance and Insurance	524	4.0%
Real Estate and Rental and Leasing	78	0.6%
Professional, Scientific, and Technical Services	136	1.0%
Management of Companies and Enterprises	8	0.1%
Administration & Support, Waste Management and Remediation	441	3.4%
Educational Services	1,053	8.1%
Health Care and Social Assistance	2,296	17.7%
Arts, Entertainment, and Recreation	45	0.3%
Accommodation and Food Services	1,001	7.7%
Other Services (excluding Public Administration)	220	1.7%
Public Administration	379	2.9%

Jobs by Distance - Work Census Block to Home Census Block

	2019	
	Count	Share
Total All Jobs	12,964	100.0%
Less than 10 miles	5,903	45.5%
10 to 24 miles	2,558	19.7%
25 to 50 miles	1,398	10.8%
Greater than 50 miles	3,105	24.0%

*Mount Pleasant-specific Data

Interpretation: MPEDC believes hundreds of workers in Mount Pleasant are forced to find housing outside of the city and county due to a lack of housing. This was true in 2019 and has been exacerbated by 2021 with large expansions occurring with major employers and new retailers opening operations since 2019 (e.g. Atwoods, Papa Johns, Long John Silvers, Williams Chicken, Starbucks, ALDI, and Wingstop)