

CITY OF MOUNT PLEASANT, TX & REGIONAL SALES TAX & EMPLOYMENT MONTHLY UPDATE

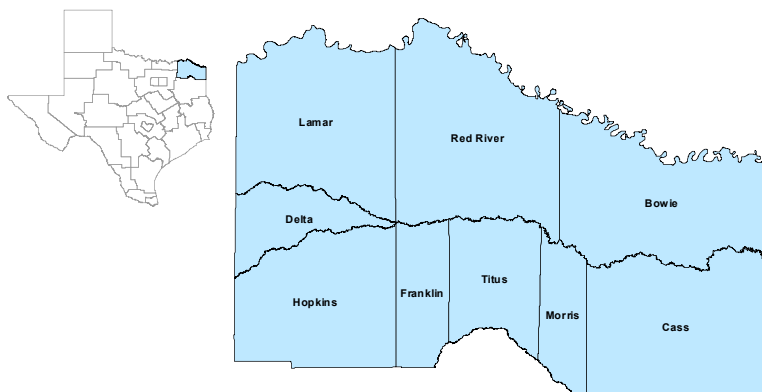


www.mpedc.org

903.572.6602

Updated on: 04/24/2023

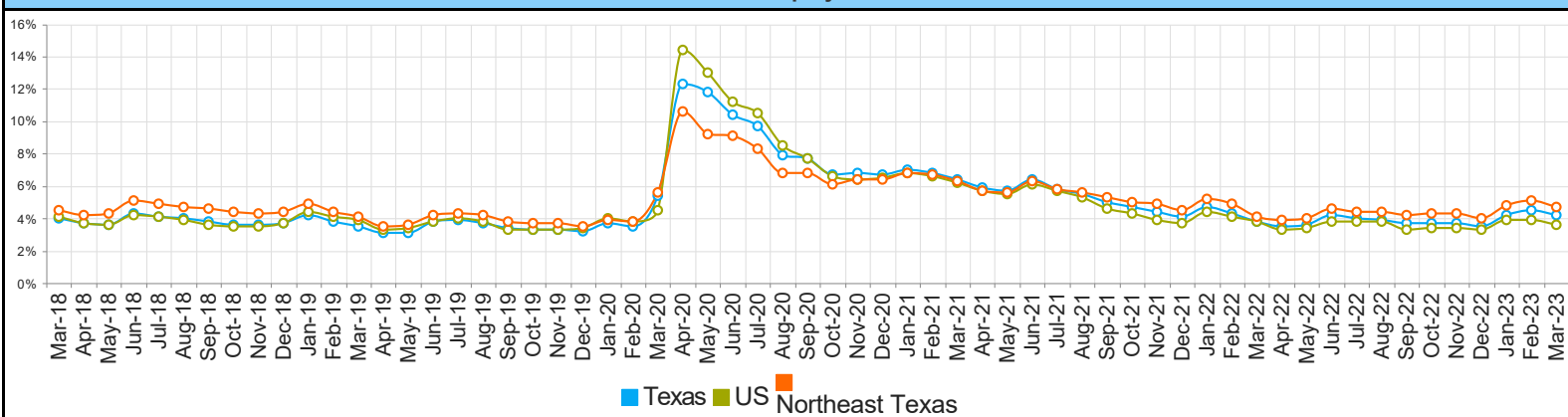
Northeast Texas Workforce Development Area



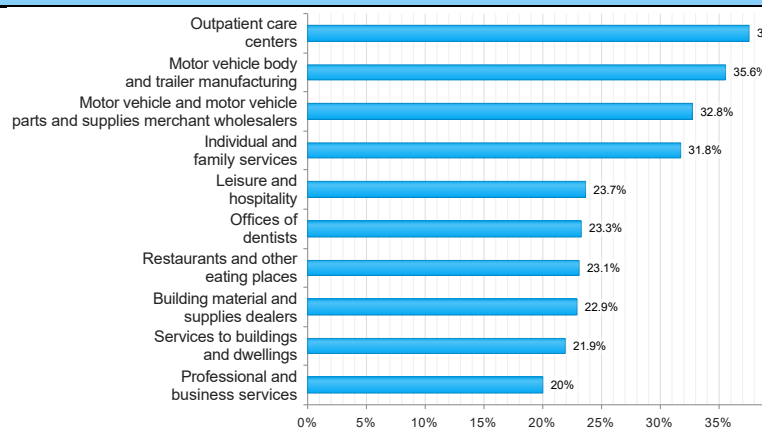
March 2023

WDA Labor Force Statistics				
	Mar-23	Feb-23	Mar-22	Yearly Change
Civilian Labor Force	127,283	126,734	126,024	1,259
Employed	121,354	120,315	120,797	557
Unemployed	5,929	6,419	5,227	702
Unemployment Rate	4.7%	5.1%	4.1%	0.6%
Texas Labor Force Statistics				
	Mar-23	Feb-23	Mar-22	Yearly Change
Civilian Labor Force	15,118,353	15,045,849	14,633,464	484,889
Employed	14,485,853	14,369,223	14,080,750	405,103
Unemployed	632,500	676,626	552,714	79,786
Unemployment Rate	4.2%	4.5%	3.8%	0.4%
US Labor Force Statistics				
	Mar-23	Feb-23	Mar-22	Yearly Change
Civilian Labor Force	166,783,000	166,178,000	164,274,000	2,509,000
Employed	160,741,000	159,713,000	158,106,000	2,635,000
Unemployed	6,043,000	6,465,000	6,168,000	-125,000
Unemployment Rate	3.6%	3.9%	3.8%	-0.2%
Continued Claims for the Week of the 12th				
	Mar-23	Feb-23	Mar-22	Yearly Change
WDA	882	906	688	194
Texas	101,392	98,026	75,230	26,162

Historical Unemployment Rates



Projected Top Ten Fastest Growing Industries in WDA (% Growth 2020-2030)



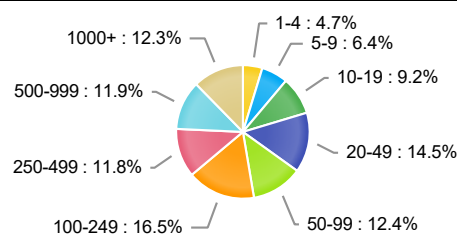
Average Weekly Wage (3rd Quarter 2022)

	Q3 2022	Q2 2022	Q3 2021	Quarterly Change	Yearly Change
WDA	\$942	\$914	\$868	\$28	\$74
Texas	\$1,333	\$1,282	\$1,227	\$51	\$106
US	\$1,334	\$1,294	\$1,250	\$40	\$84

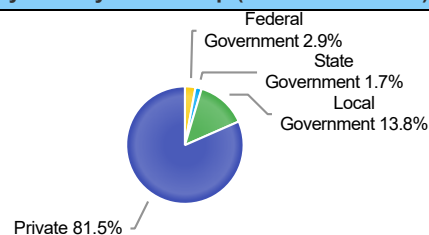
Employment by Industry (3rd Quarter 2022, Percent Change)

Industry	Employment	% of Total	% Quarterly Change	% Yearly Change
Natural Resources and Mining	1,046	0.9%	-2.0%	-2.6%
Construction	5,587	5.0%	1.7%	-0.1%
Manufacturing	19,662	17.4%	-0.1%	4.0%
Trade, Transportation and Utilities	23,688	21.0%	-0.6%	0.4%
Information	602	0.5%	4.2%	7.9%
Financial Activities	4,259	3.8%	-0.7%	4.0%
Professional and Business Services	7,350	6.5%	5.0%	0.8%
Education and Health Services	30,735	27.2%	-0.5%	1.7%
Leisure and Hospitality	11,241	10.0%	-0.2%	-2.1%
Other Services	2,496	2.2%	1.8%	4.3%
Public Administration	6,159	5.5%	-0.2%	-6.6%

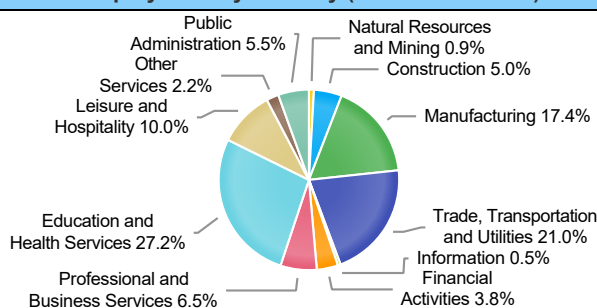
Employment by Size Class (3rd Quarter 2022)



Employment by Ownership (3rd Quarter 2022)



Employment by Industry (3rd Quarter 2022)



CITY OF MOUNT PLEASANT, TX

City Sales and Use Tax Comparison Summary

City	Net Payment This Period	Comparable Payment Prior Year	% of Change	Payment YTD	Prior Year Payment YTD	% of Change
Mount Pleasant	\$667,236.47	\$609,667.20	9.44%	\$2,849,688.93	\$2,727,946.50	4.46%
Daingerfield	\$48,145.56	\$41,993.69	14.64%	\$216,946.36	\$198,612.73	9.23%
Mount Vernon	\$83,682.75	\$83,360.03	0.38%	\$369,158.15	\$408,126.73	-9.54%
Paris	\$896,269.80	\$758,579.53	18.15%	\$4,032,511.16	\$3,676,905.40	9.67%
Pittsburg	\$132,751.58	\$87,831.04	51.14%	\$580,390.54	\$430,744.71	34.74%
Sulphur Springs	\$655,184.17	\$567,043.66	15.54%	\$2,888,904.73	\$2,658,969.71	8.64%

12-Month Mt. Pleasant Monthly Employment, Labor, Unemployment, & Unemployment Rate

P: Preliminary

Year	Month	Labor Force	Employment	Unemployment	Unemployment Rate
2022	Dec	13638	13127	511	3.7
2023	Jan	13869	13223	646	4.7
2023	Feb	14189(P)	13501(P)	688(P)	4.8(P)
2022	Mar	13879	13367	512	3.7
2022	Apr	13465	12977	488	3.6
2022	May	13570	13049	521	3.8
2022	Jun	13632	12967	665	4.9
2022	Jul	13698	13075	623	4.5
2022	Aug	13604	12996	608	4.5
2022	Sep	13689	13107	582	4.3
2022	Oct	13672	13099	573	4.2
2022	Nov	13646	13083	563	4.1

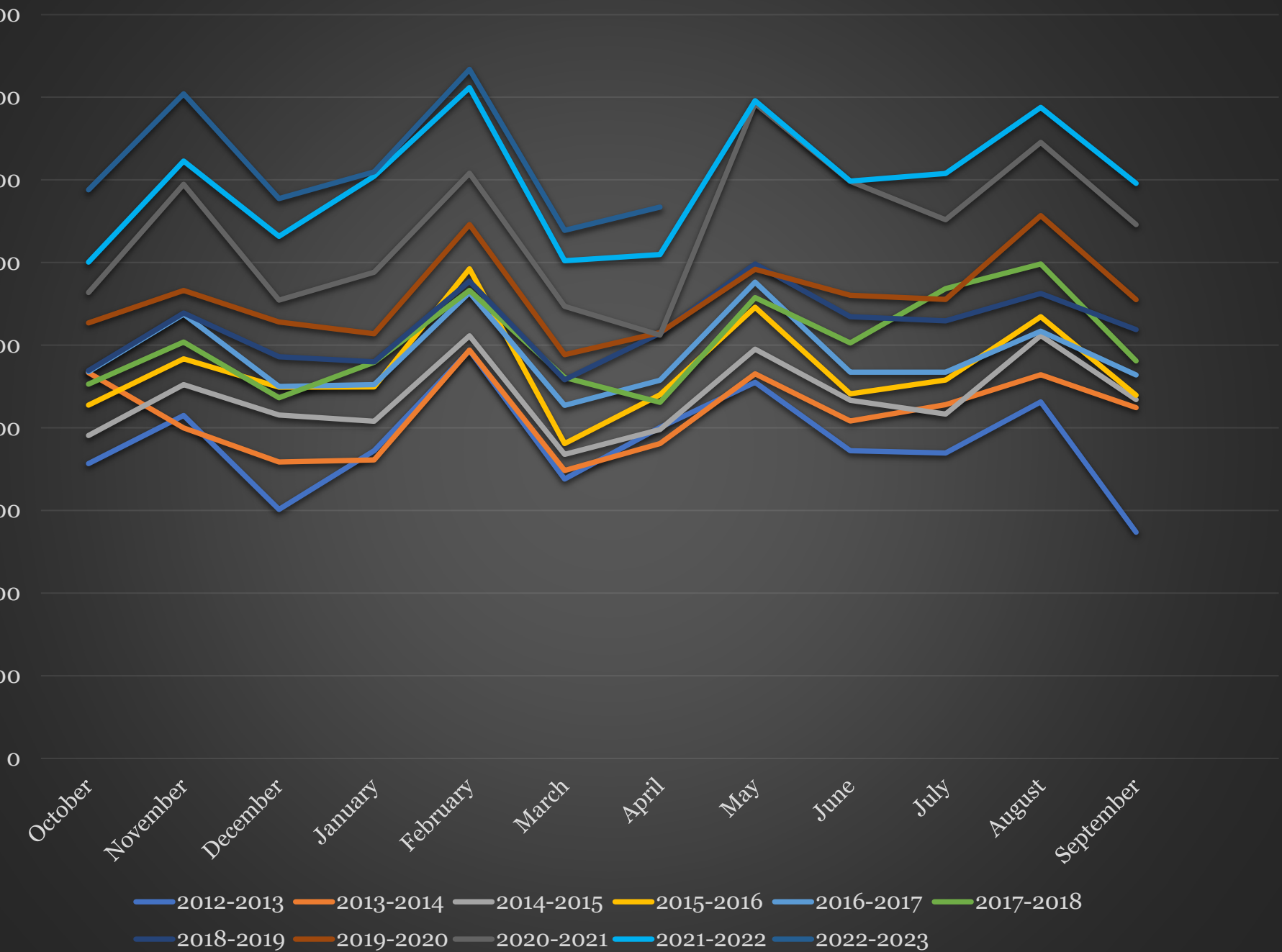
TEXARKANA LAUS															
		March-23				December-22					January-22				
Area	Area Type	Labor Force	Employment	Unemployment	Rate	Labor Force	Employment	Unemployment	Rate	Labor Force	Employment	Unemployment	Rate		
Bowie	County	39,060	37,260	1,800	4.6	38,940	36,991	1,949	5.0	38,755	37,021	1,734	4.5		
Cass	County	12,138	11,545	593	4.9	11,992	11,334	658	5.5	12,332	11,783	549	4.5		
Delta	County	2,613	2,482	131	5.0	2,608	2,465	143	5.5	2,551	2,455	96	3.8		
Franklin	County	5,557	5,358	199	3.6	5,509	5,291	218	4.0	5,521	5,358	163	3.0		
Hopkins	County	19,125	18,288	837	4.4	19,098	18,177	921	4.8	18,642	18,049	593	3.2		
Lamar	County	24,863	23,699	1,164	4.7	24,769	23,507	1,262	5.1	24,703	23,688	1,015	4.1		
Morris	County	4,559	4,264	295	6.5	4,541	4,247	294	6.5	4,500	4,207	293	6.5		
Red River	County	5,093	4,842	251	4.9	5,086	4,799	287	5.6	5,246	4,999	247	4.7		
Titus	County	14,275	13,616	659	4.6	14,191	13,504	687	4.8	13,774	13,237	537	3.9		
Paris	City	11,983	11,331	652	5.4	11,956	11,239	717	6.0	11,862	11,325	537	4.5		
Texarkana	City	14,929	14,231	698	4.7	14,916	14,128	788	5.3	14,828	14,140	688	4.6		

Mount Pleasant is in the Texarkana LAUS area which encloses 9 counties (Bowie, Cass, Delta, Franklin, Hopkins, Lamar, Morris, Red River, Titus) and 2 cities (Paris and Texarkana TX).

- [LAUS \(Local Area Unemployment Statistics\)](#)
- [WDA \(Workforce Development Area\)](#)
- <http://netxworkforce.org>

SALES TAX ANALYSIS 2022-2023												
											Increase/	Increase/
	Fiscal Year	Fiscal Year	Fiscal Year	Fiscal Year	Fiscal Year	Fiscal Year	Fiscal Year		Fiscal Year		Decrease	Decrease
Month	2015-2016	2016-2017	2017-2018	2018-2019	2019-2020	2020-2021	2021-2022	YTD	2022-2023	YTD	Monthly	YTD
October	427,503	468,023	452,936	469,460	527,009	563,685	600,477	600,477	687,931	687,931	14.56%	14.56%
November	483,487	537,694	503,890	538,937	566,266	694,632	722,839	1,323,316	804,221	1,492,152	11.25%	12.76%
December	449,230	450,032	436,514	486,070	528,108	554,464	631,776	1,955,092	671,535	2,163,687	6.29%	10.67%
January	449,471	452,418	479,294	479,869	514,014	588,357	704,431	2,659,523	709,764	2,873,451	0.75%	0.08%
February	592,475	563,845	566,236	577,354	646,021	708,163	811,584	3,471,107	833,566	3,707,017	2.70%	6.79%
March	380,986	427,259	461,022	458,329	488,500	547,037	602,265	4,073,372	639,123	4,346,140	6.11%	6.70%
April	440,156	457,790	430,902	514,474	515,333	512,342	609,667	4,683,049	667,237	5,013,377	9.44%	7.05%
May	546,057	576,330	557,748	598,418	591,833	792,405	795,909	5,478,958				
June	441,246	467,350	502,735	534,409	560,372	698,441	698,469	6,177,427				
July	457,958	467,298	568,397	529,547	555,480	651,804	707,795	6,885,222				
August	534,430	517,103	598,256	562,637	656,930	745,461	787,645	7,672,867				
September	439,577	464,046	480,972	518,839	555,026	645,866	695,822	8,368,689				
	5,642,575	5,849,188	6,038,902	6,268,343	6,704,892	7,702,657	8,368,689		5,013,377			

Sales Tax Analysis



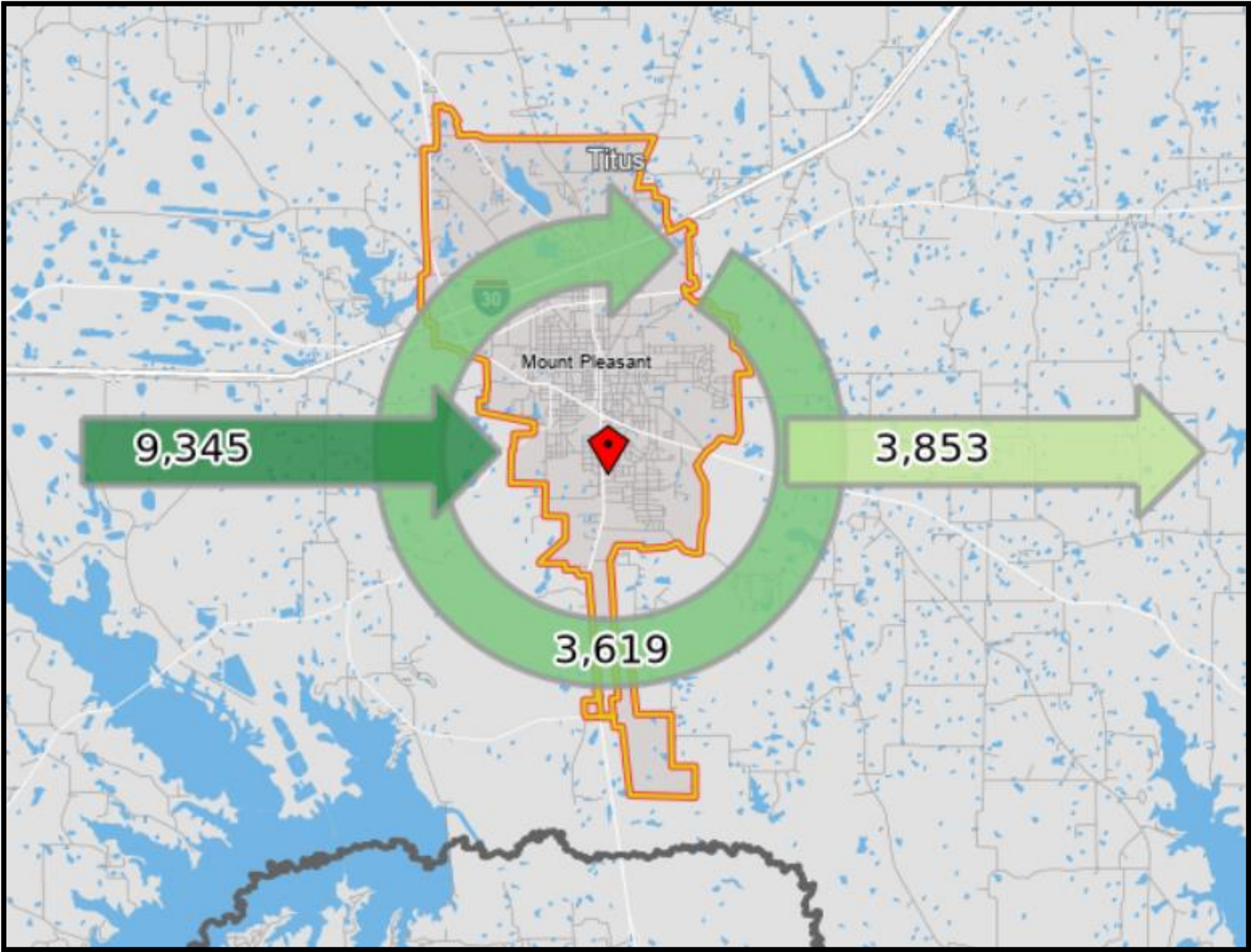
Daily Workforce Inflow & Outflow for Mount Pleasant.

What it means:

The latest (2019, **NOT** 2021 data) available Census data indicate there were 12,964 employment opportunities in Mount Pleasant which were filled by only 3,619 workers who actually resided in Mount Pleasant. The majority (ie. 9,345 workers) commuted from outside city limits to employment opportunities within Mount Pleasant.

This phenomenon highlights the predictable, deep-rooted commuter ethic in the region. Workers will commute for gainful employment in order to live where they desire within the region's myriad offerings (e.g. lakes, forest, hyper-rural towns, and/or country-living).

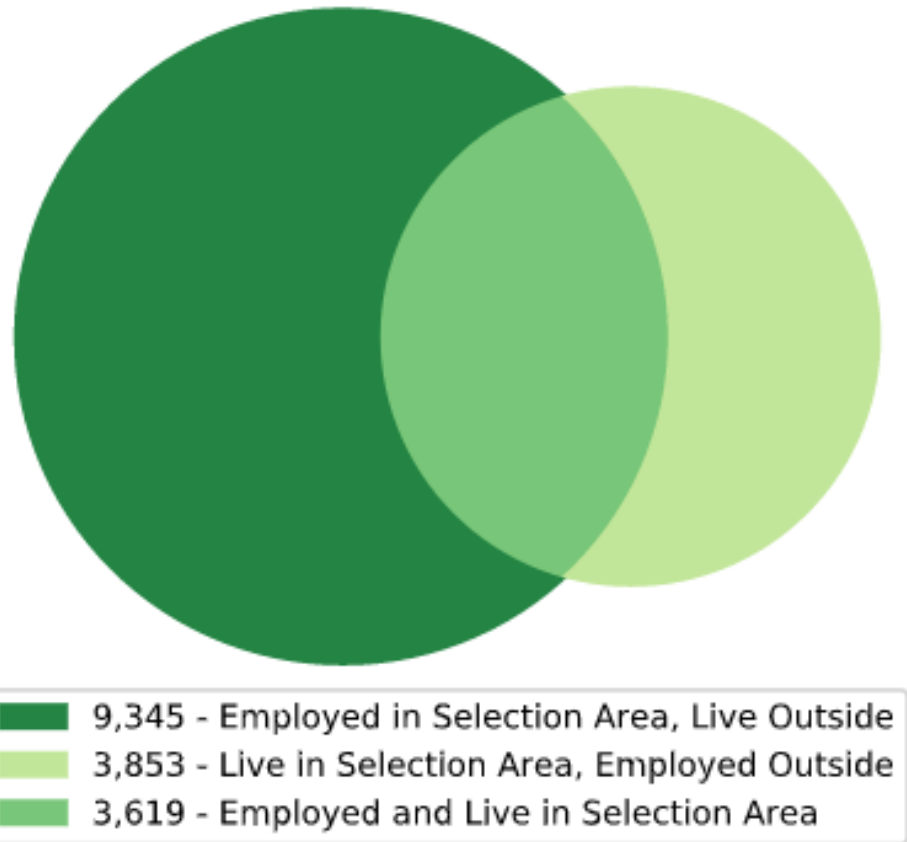
This phenomenon, along with primary research, is MPEDC's substantiation for its 60-minute drivetime workforce of almost 500,000.



*Mount Pleasant-specific Data

Interpretation: MPEDC believes hundreds of workers in Mount Pleasant are forced to find housing outside of the city and county due to a lack of housing. This was true in 2019 and has been exacerbated by 2021 with large expansions occurring with major employers and new retailers opening operations since 2019 (e.g. Atwoods, Papa Johns, Long John Silvers, Williams Chicken, Starbucks, ALDI, and Wingstop)

Inflow/Outflow Job Counts in 2019



Inflow/Outflow Job Counts (All Jobs)

	2019	
	Count	Share
Employed in the Selection Area	12,964	100.0%
Employed in the Selection Area but Living Outside	9,345	72.1%
Employed and Living in the Selection Area	3,619	27.9%
Living in the Selection Area	7,472	100.0%
Living in the Selection Area but Employed Outside	3,853	51.6%
Living and Employed in the Selection Area	3,619	48.4%

Daily Workforce Inflow & Outflow for Mount Pleasant.

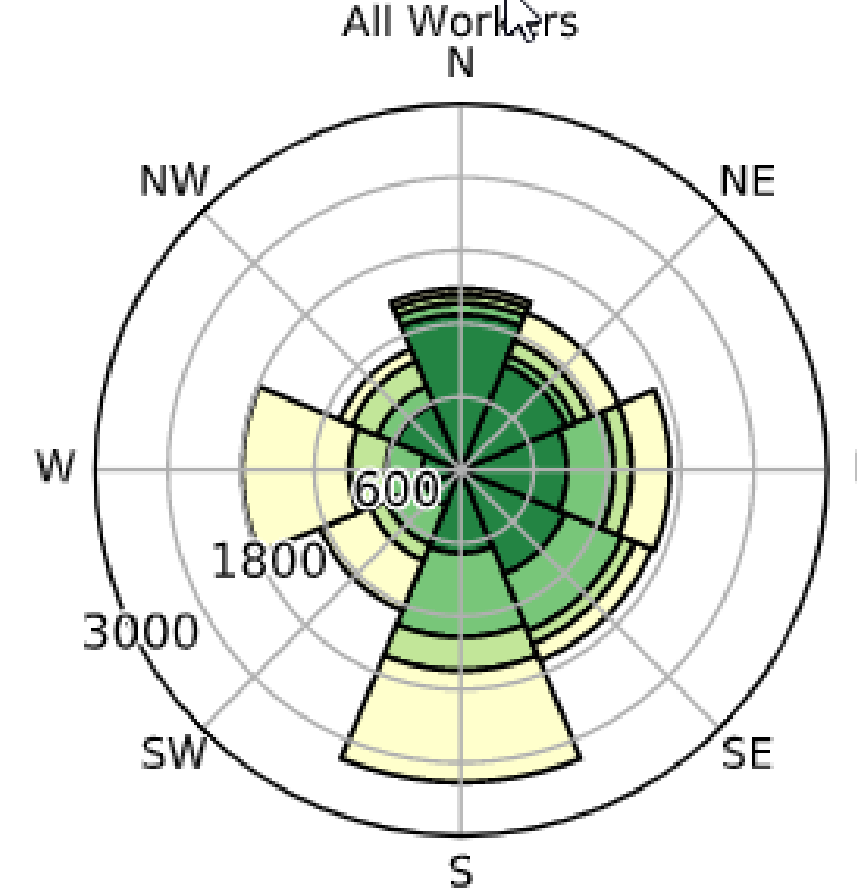
What it means:

The latest (2019, **NOT** 2021 data) available Census data indicate there were 12,964 employment opportunities in Mount Pleasant which were filled by only 3,619 workers who actually resided in Mount Pleasant. The majority (ie. 9,345 workers) commuted from outside city limits to employment opportunities within Mount Pleasant.

This phenomenon highlights the predictable, deep-rooted commuter ethic in the region. Workers will commute for gainful employment in order to live where they desire within the region's myriad offerings (e.g. lakes, forest, hyper-rural towns, and/or country-living).

This phenomenon, along with primary research, is MPEDC's substantiation for its 60-minute drivetime workforce of almost 500,000.

Job Counts by Distance/Direction in 2019
All Workers



Jobs Counts by Places (Cities, CDPs, etc.)
Where Workers Live - All Jobs

	2019	
	Count	Share
All Places (Cities, CDPs, etc.)	12,964	100.0%
Mount Pleasant city, TX	3,619	27.9%
Pittsburg city, TX	497	3.8%
Texarkana city, TX	193	1.5%
Daingerfield city, TX	169	1.3%
Mount Vernon town, TX	152	1.2%
Dallas city, TX	132	1.0%
Sulphur Springs city, TX	122	0.9%
Paris city, TX	120	0.9%
Longview city, TX	112	0.9%
Naples city, TX	107	0.8%
All Other Locations	7,741	59.7%

NAICS Industry Sector

	2019	
	Count	Share
Agriculture, Forestry, Fishing and Hunting	39	0.3%
Mining, Quarrying, and Oil and Gas Extraction	0	0.0%
Utilities	72	0.6%
Construction	225	1.7%
Manufacturing	4,619	35.6%
Wholesale Trade	210	1.6%
Retail Trade	1,432	11.0%
Transportation and Warehousing	137	1.1%
Information	49	0.4%
Finance and Insurance	524	4.0%
Real Estate and Rental and Leasing	78	0.6%
Professional, Scientific, and Technical Services	136	1.0%
Management of Companies and Enterprises	8	0.1%
Administration & Support, Waste Management and Remediation	441	3.4%
Educational Services	1,053	8.1%
Health Care and Social Assistance	2,296	17.7%
Arts, Entertainment, and Recreation	45	0.3%
Accommodation and Food Services	1,001	7.7%
Other Services (excluding Public Administration)	220	1.7%
Public Administration	379	2.9%

Jobs by Distance - Work Census Block to Home Census Block

	2019	
	Count	Share
Total All Jobs	12,964	100.0%
Less than 10 miles	5,903	45.5%
10 to 24 miles	2,558	19.7%
25 to 50 miles	1,398	10.8%
Greater than 50 miles	3,105	24.0%

*Mount Pleasant-specific Data

Interpretation: MPEDC believes hundreds of workers in Mount Pleasant are forced to find housing outside of the city and county due to a lack of housing. This was true in 2019 and has been exacerbated by 2021 with large expansions occurring with major employers and new retailers opening operations since 2019 (e.g. Atwoods, Papa Johns, Long John Silvers, Williams Chicken, Starbucks, ALDI, and Wingstop)