

CITY OF MOUNT PLEASANT, TX & REGIONAL SALES TAX & EMPLOYMENT MONTHLY UPDATE

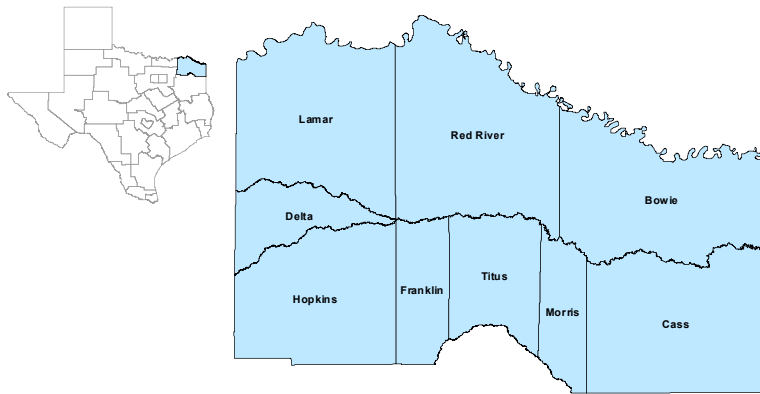


www.mpedc.org

903.572.6602

Updated on: 1/21/2022

North East Workforce Development Area



December 2021

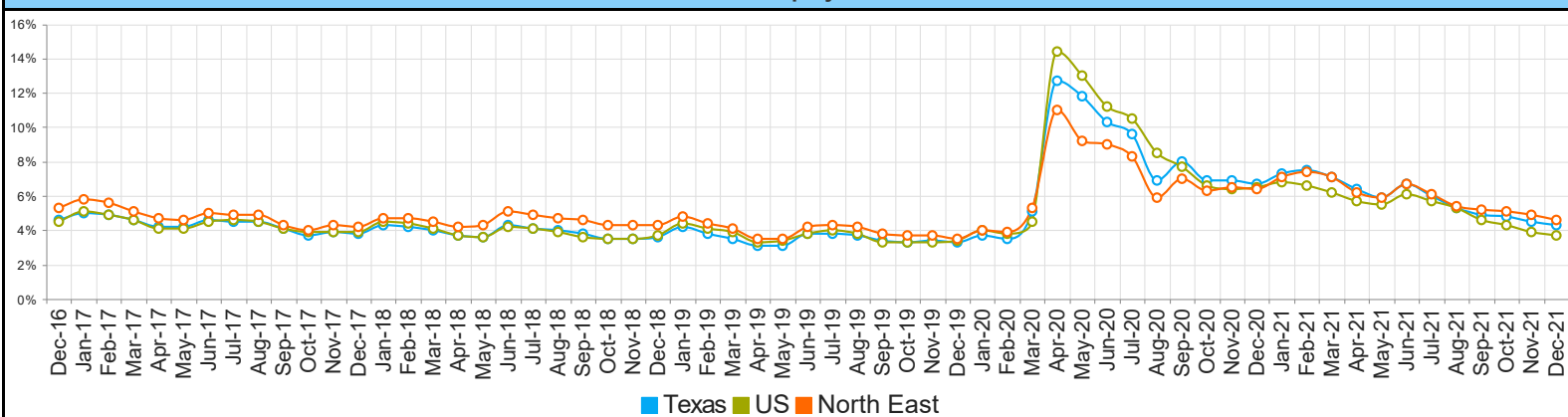
WDA Labor Force Statistics				
	Dec-21	Nov-21	Dec-20	Yearly Change
Civilian Labor Force	122,787	123,230	124,062	-1,275
Employed	117,134	117,161	116,074	1,060
Unemployed	5,653	6,069	7,988	-2,335
Unemployment Rate	4.6%	4.9%	6.4%	-1.8%

Texas Labor Force Statistics				
	Dec-21	Nov-21	Dec-20	Yearly Change
Civilian Labor Force	14,398,693	14,429,974	14,139,874	258,819
Employed	13,785,955	13,775,211	13,191,324	594,631
Unemployed	612,738	654,763	948,550	-335,812
Unemployment Rate	4.3%	4.5%	6.7%	-2.4%

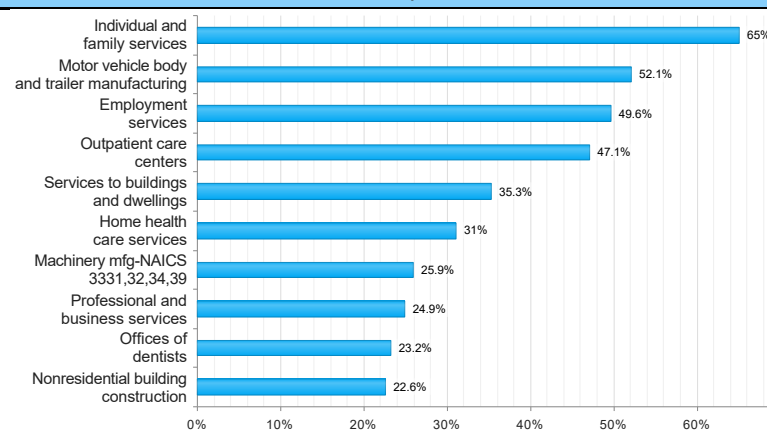
US Labor Force Statistics				
	Dec-21	Nov-21	Dec-20	Yearly Change
Civilian Labor Force	161,696,000	162,099,000	160,017,000	1,679,000
Employed	155,732,000	155,797,000	149,613,000	6,119,000
Unemployed	5,964,000	6,302,000	10,404,000	-4,440,000
Unemployment Rate	3.7%	3.9%	6.5%	-2.8%

Continued Claims for the Week of the 12th				
	Dec-21	Nov-21	Dec-20	Yearly Change
WDA	803	854	1,897	-1,094
Texas	80,731	84,722	244,808	-164,077

Historical Unemployment Rates



Projected Top Ten Fastest Growing Industries in WDA (% Growth 2018-2028)



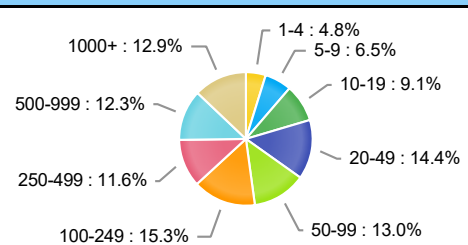
Average Weekly Wage (2nd Quarter 2021)

	Q2 2021	Q1 2021	Q2 2020	Quarterly Change	Yearly Change
WDA	\$847	\$807	\$819	\$40	\$28
Texas	\$1,210	\$1,259	\$1,156	\$49	\$54
US	\$1,241	\$1,288	\$1,188	\$47	\$53

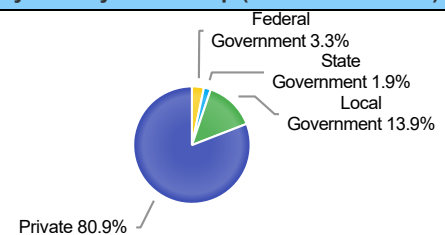
Employment by Industry (2nd Quarter 2021, Percent Change)

Industry	Employment	% of Total	% Quarterly Change	% Yearly Change
Natural Resources and Mining	1,090	1.0%	1.4%	-8.2%
Construction	5,560	5.0%	2.6%	3.8%
Manufacturing	18,631	16.7%	1.7%	8.7%
Trade, Transportation and Utilities	23,510	21.1%	1.5%	8.1%
Information	534	0.5%	3.9%	12.4%
Financial Activities	4,060	3.6%	0.7%	2.4%
Professional and Business Services	7,224	6.5%	3.3%	7.9%
Education and Health Services	30,307	27.2%	-1.0%	2.6%
Leisure and Hospitality	11,404	10.2%	6.0%	18.4%
Other Services	2,352	2.1%	4.3%	8.2%
Public Administration	6,700	6.0%	1.2%	-1.7%

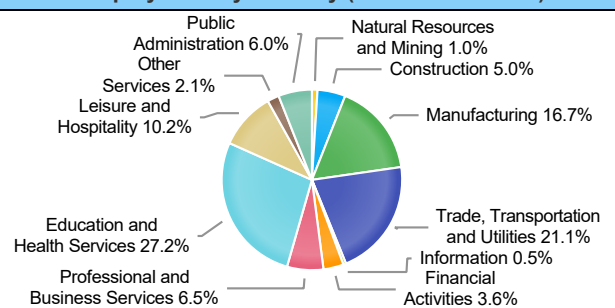
Employment by Size Class (2nd Quarter 2021)



Employment by Ownership (2nd Quarter 2021)



Employment by Industry (2nd Quarter 2021)



CITY OF MOUNT PLEASANT, TX

City Sales and Use Tax Comparison Summary

City	Net Payment This Period	Comparable Payment Prior Year	% of Change	Payment YTD	Prior Year Payment YTD	% of Change
Mount Pleasant	\$704,430.63	\$588,358.86	19.72%	\$704,430.63	\$588,358.86	19.72%
Daingerfield	\$42,117.81	\$37,318.54	12.86%	\$42,117.81	\$37,318.54	12.86%
Mount Vernon	\$103,901.28	\$86,142.75	20.61%	\$103,901.28	\$86,142.75	20.61%
Paris	\$900,324.39	\$799,969.03	12.54%	\$900,324.39	\$799,969.03	12.54%
Pittsburg	\$112,698.84	\$86,193.35	30.75%	\$112,698.84	\$86,193.35	30.75%
Sulphur Springs	\$670,858.64	\$559,754.20	19.84%	\$670,858.64	\$559,754.20	19.84%

Mount Pleasant Monthly Employment, Labor, Unemployment, & Unemployment Rate

Month	Labor Force	Employment	Unemployment	Unemployment Rate
January 2021	13511	12618	893	6.6
February 2021	13701	12788	923	6.7
March 2021	13677	12797	880	6.4
April 2021	13462	12697	765	5.7
May 2021	13402	12678	724	5.4
June 2021	13164	12288	876	6.7
July 2021	13213	12412	801	6.1
August 2021	13190	12481	709	5.4
September 2021	13297	12643	654	4.9
October 2021	13144	12509	635	4.8
November 2021	13167(P)	12566(P)	601(P)	4.6(P)
December 2020	13491	12643	848	6.3

P: Preliminary

TEXARKANA LAUS													
		December-21				November-21				December-20			
Area	Area Type	Labor Force	Employment	Unemployment	Rate	Labor Force	Employment	Unemployment	Rate	Labor Force	Employment	Unemployment	Rate
Bowie	County	39,486	37,611	1,875	4.7	39,392	37,399	1,993	5.1	39,163	36,711	2,452	6.3
Cass	County	11,885	11,256	629	5.3	11,942	11,255	687	5.8	12,427	11,417	1,010	8.1
Delta	County	2,376	2,281	95	4.0	2,393	2,288	105	4.4	2,438	2,318	120	4.9
Franklin	County	5,226	5,051	175	3.3	5,268	5,082	186	3.5	4,901	4,632	269	5.5
Hopkins	County	17,347	16,754	593	3.4	17,474	16,822	652	3.7	17,744	16,885	859	4.8
Lamar	County	23,837	22,754	1,083	4.5	24,045	22,876	1,169	4.9	23,895	22,430	1,465	6.1
Morris	County	4,360	4,000	360	8.3	4,422	4,029	393	8.9	4,742	4,109	633	13.3
Red River	County	5,138	4,868	270	5.3	5,123	4,844	279	5.4	5,261	4,929	332	6.3
Titus	County	13,132	12,559	573	4.4	13,171	12,566	605	4.6	13,491	12,643	848	6.3
Paris	City	11,440	10,878	562	4.9	11,544	10,937	607	5.3	11,510	10,723	787	6.8
Texarkana	City	15,101	14,440	661	4.4	15,069	14,359	710	4.7	15,151	14,095	1,056	7.0

Mount Pleasant is in the Texarkana LAUS area which encloses 9 counties (Bowie, Cass, Delta, Franklin, Hopkins, Lamar, Morris, Red River, Titus) and 2 cities (Paris and Texarkana TX).

- LAUS (Local Area Unemployment Statistics)
- WDA (Workforce Development Area)
- <http://netxworkforce.org>

SALES TAX ANALYSIS
2021-2022

											Increase/	Increase/
	Fiscal Year	Fiscal Year	Fiscal Year	Fiscal Year	Fiscal Year	Fiscal Year	Fiscal Year		Fiscal Year		Decrease	Decrease
Month	2014-2015	2015-2016	2016-2017	2017-2018	2018-2019	2019-2020	2020-2021	YTD		YTD	Monthly	YTD
October	390,863	427,503	468,023	452,936	469,460	527,009	563,685	563,685	600,477	600,477	6.52%	6.52%
November	452,369	483,487	537,694	503,890	538,937	566,266	694,632	1,258,317	722,839	1,323,316	4.06%	5.17%
December	415,535	449,230	450,032	436,514	486,070	528,108	554,464	1,812,781	631,776	1,955,092	13.94%	7.85%
January	408,005	449,471	452,418	479,294	479,869	514,014	588,357	2,401,138	704,431	2,659,523	19.72%	10.76%
February	511,382	592,475	563,845	566,236	577,354	646,021	708,163	3,109,301				
March	367,865	380,986	427,259	461,022	458,329	488,500	547,037	3,656,338				
April	397,999	440,156	457,790	430,902	514,474	515,333	512,342	4,168,680				
May	495,205	546,057	576,330	557,748	598,418	591,833	792,405	4,961,085				
June	433,304	441,246	467,350	502,735	534,409	560,372	698,441	5,659,526				
July	416,684	457,958	467,298	568,397	529,547	555,480	651,804	6,311,330				
August	511,572	534,430	517,103	598,256	562,637	656,930	745,461	7,056,791				
September	434,331	439,577	464,046	480,972	518,839	555,026	645,866	7,702,657				
	5,235,113	5,642,575	5,849,188	6,038,902	6,268,343	6,704,892	7,702,657		2,659,523			

Sales Tax Analysis

