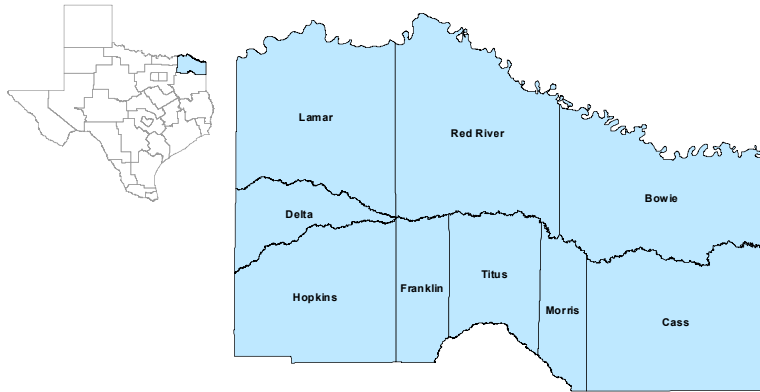


## North East Workforce Development Area



## December 2021

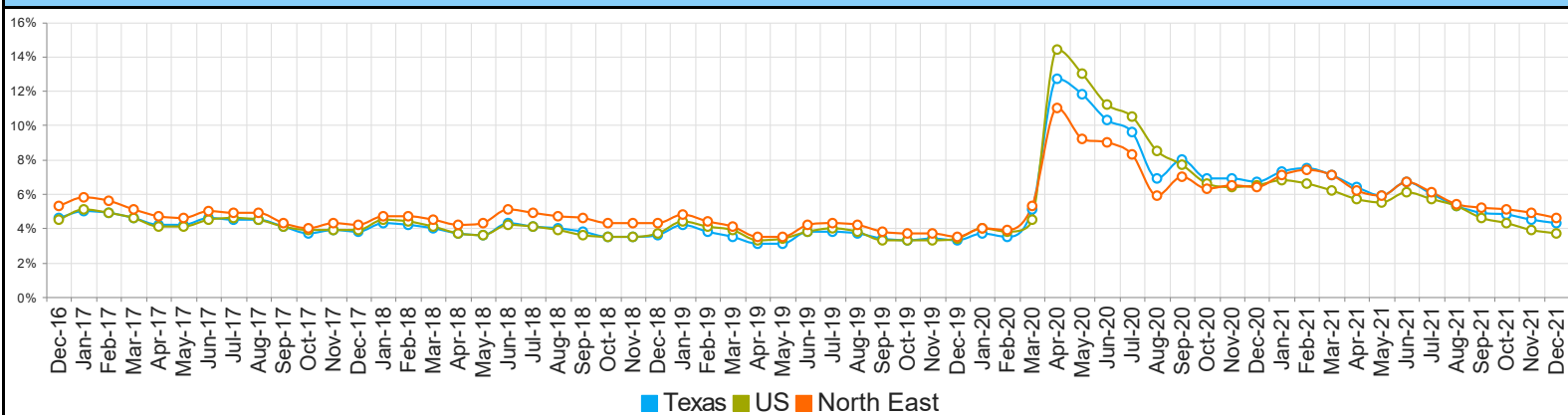
WDA Labor Force Statistics				
	Dec-21	Nov-21	Dec-20	Yearly Change
Civilian Labor Force	122,787	123,230	124,062	-1,275
Employed	117,134	117,161	116,074	1,060
Unemployed	5,653	6,069	7,988	-2,335
Unemployment Rate	4.6%	4.9%	6.4%	-1.8%

Texas Labor Force Statistics				
	Dec-21	Nov-21	Dec-20	Yearly Change
Civilian Labor Force	14,398,693	14,429,974	14,139,874	258,819
Employed	13,785,955	13,775,211	13,191,324	594,631
Unemployed	612,738	654,763	948,550	-335,812
Unemployment Rate	4.3%	4.5%	6.7%	-2.4%

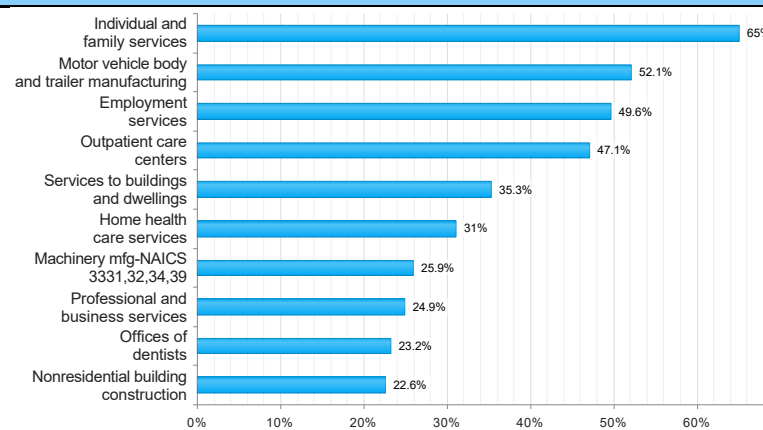
US Labor Force Statistics				
	Dec-21	Nov-21	Dec-20	Yearly Change
Civilian Labor Force	161,696,000	162,099,000	160,017,000	1,679,000
Employed	155,732,000	155,797,000	149,613,000	6,119,000
Unemployed	5,964,000	6,302,000	10,404,000	-4,440,000
Unemployment Rate	3.7%	3.9%	6.5%	-2.8%

Continued Claims for the Week of the 12th				
	Dec-21	Nov-21	Dec-20	Yearly Change
WDA	803	854	1,897	-1,094
Texas	80,731	84,722	244,808	-164,077

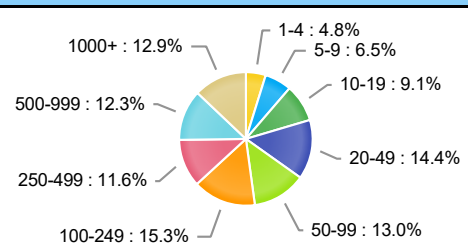
## Historical Unemployment Rates



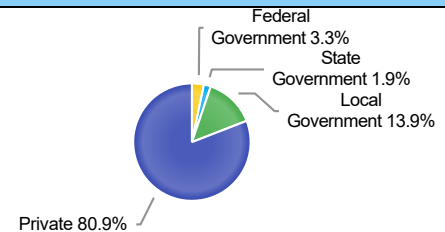
## Projected Top Ten Fastest Growing Industries in WDA (% Growth 2018-2028)



## Employment by Size Class (2nd Quarter 2021)



## Employment by Ownership (2nd Quarter 2021)



## Average Weekly Wage (2nd Quarter 2021)

	Q2 2021	Q1 2021	Q2 2020	Quarterly Change	Yearly Change
WDA	\$847	\$807	\$819	\$40	\$28
Texas	\$1,210	\$1,259	\$1,156	\$49	\$54
US	\$1,241	\$1,288	\$1,188	\$47	\$53

## Employment by Industry (2nd Quarter 2021, Percent Change)

Industry	Employment	% of Total	% Quarterly Change	% Yearly Change
Natural Resources and Mining	1,090	1.0%	1.4%	-8.2%
Construction	5,560	5.0%	2.6%	3.8%
Manufacturing	18,631	16.7%	1.7%	8.7%
Trade, Transportation and Utilities	23,510	21.1%	1.5%	8.1%
Information	534	0.5%	3.9%	12.4%
Financial Activities	4,060	3.6%	0.7%	2.4%
Professional and Business Services	7,224	6.5%	3.3%	7.9%
Education and Health Services	30,307	27.2%	-1.0%	2.6%
Leisure and Hospitality	11,404	10.2%	6.0%	18.4%
Other Services	2,352	2.1%	4.3%	8.2%
Public Administration	6,700	6.0%	1.2%	-1.7%

## Employment by Industry (2nd Quarter 2021)

