

# CITY OF MOUNT PLEASANT, TX & REGIONAL SALES TAX & EMPLOYMENT MONTHLY UPDATE

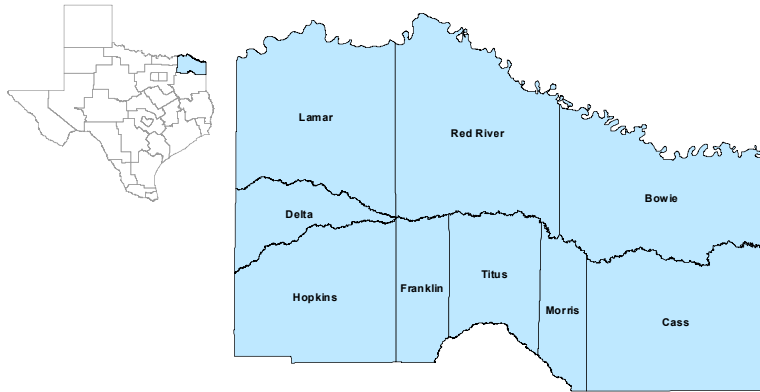


[www.mpedc.org](http://www.mpedc.org)

903.572.6602

Updated on: 12/23/2021

## North East Workforce Development Area



## November 2021

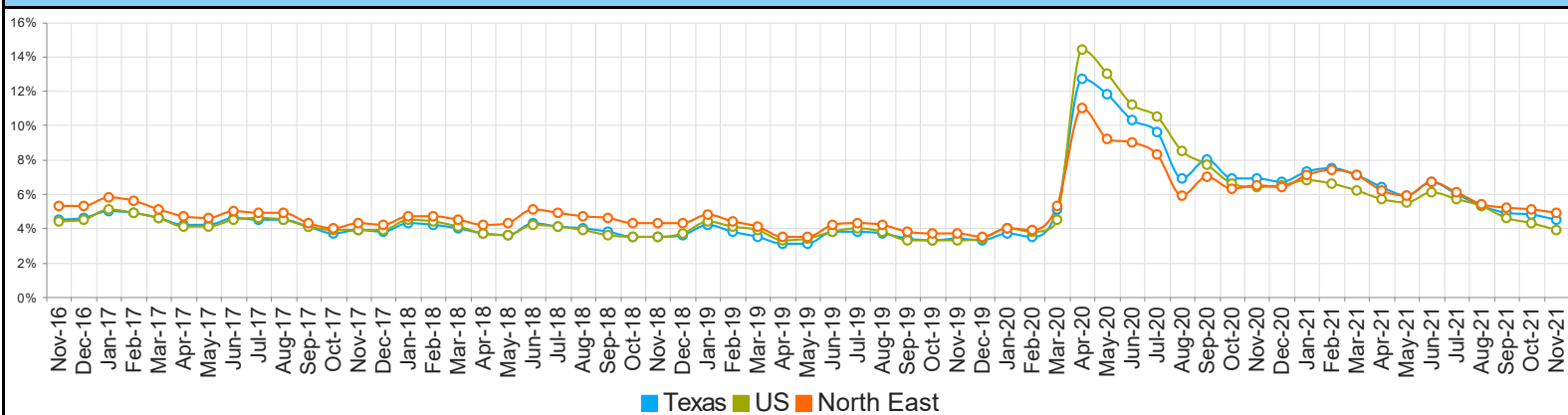
WDA Labor Force Statistics				
	Nov-21	Oct-21	Nov-20	Yearly Change
Civilian Labor Force	123,086	122,755	123,664	-578
Employed	117,010	116,545	115,616	1,394
Unemployed	6,076	6,210	8,048	-1,972
Unemployment Rate	4.9%	5.1%	6.5%	-1.6%

Texas Labor Force Statistics				
	Nov-21	Oct-21	Nov-20	Yearly Change
Civilian Labor Force	14,430,417	14,315,600	14,050,100	380,317
Employed	13,775,262	13,634,481	13,076,638	698,624
Unemployed	655,155	681,119	973,462	-318,307
Unemployment Rate	4.5%	4.8%	6.9%	-2.4%

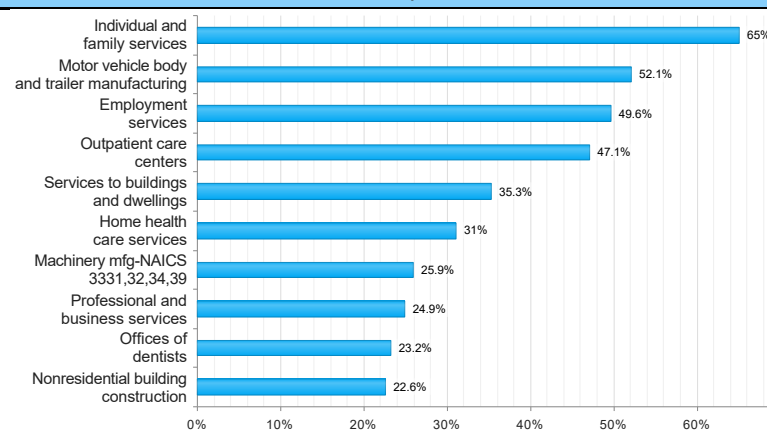
US Labor Force Statistics				
	Nov-21	Oct-21	Nov-20	Yearly Change
Civilian Labor Force	162,099,000	161,863,000	160,468,000	1,631,000
Employed	155,797,000	154,966,000	150,203,000	5,594,000
Unemployed	6,302,000	6,896,000	10,264,000	-3,962,000
Unemployment Rate	3.9%	4.3%	6.4%	-2.5%

Continued Claims for the Week of the 12th				
	Nov-21	Oct-21	Nov-20	Yearly Change
WDA	837	861	2,302	-1,465
Texas	82,646	89,105	284,783	-202,137

## Historical Unemployment Rates



## Projected Top Ten Fastest Growing Industries in WDA (% Growth 2018-2028)



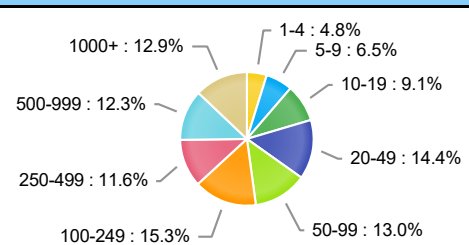
## Average Weekly Wage (2nd Quarter 2021)

	Q2 2021	Q1 2021	Q2 2020	Quarterly Change	Yearly Change
WDA	\$847	\$807	\$819	\$40	\$28
Texas	\$1,210	\$1,259	\$1,156	\$49	\$54
US	\$1,241	\$1,288	\$1,188	\$47	\$53

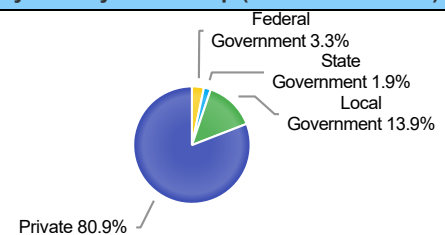
## Employment by Industry (2nd Quarter 2021, Percent Change)

Industry	Employment	% of Total	% Quarterly Change	% Yearly Change
Natural Resources and Mining	1,090	1.0%	1.4%	-8.2%
Construction	5,560	5.0%	2.6%	3.8%
Manufacturing	18,631	16.7%	1.7%	8.7%
Trade, Transportation and Utilities	23,510	21.1%	1.5%	8.1%
Information	534	0.5%	3.9%	12.4%
Financial Activities	4,060	3.6%	0.7%	2.4%
Professional and Business Services	7,224	6.5%	3.3%	7.9%
Education and Health Services	30,307	27.2%	-1.0%	2.6%
Leisure and Hospitality	11,404	10.2%	6.0%	18.4%
Other Services	2,352	2.1%	4.3%	8.2%
Public Administration	6,700	6.0%	1.2%	-1.7%

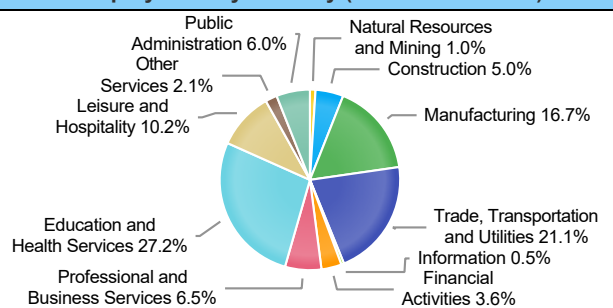
## Employment by Size Class (2nd Quarter 2021)



## Employment by Ownership (2nd Quarter 2021)



## Employment by Industry (2nd Quarter 2021)



# CITY OF MOUNT PLEASANT, TX

## City Sales and Use Tax Comparison Summary

City	Net Payment This Period	Comparable Payment Prior Year	% of Change	Payment YTD	Prior Year Payment YTD	% of Change
Mount Pleasant	\$722,839.33	\$694,631.86	4.06%	\$7,213,192.91	\$6,341,826.80	13.73%
Daingerfield	\$51,443.59	\$41,142.45	25.03%	\$498,040.86	\$439,556.19	13.3%
Mount Vernon	\$100,667.68	\$127,949.24	-21.32%	\$985,254.27	\$886,743.28	11.1%
Paris	\$1,040,226.48	\$1,160,721.70	-10.38%	\$10,183,783.72	\$9,098,688.28	11.92%
Pittsburg	\$154,805.73	\$113,979.14	35.81%	\$1,203,395.43	\$1,077,521.76	11.68%
Sulphur Springs	\$711,751.59	\$639,741.60	11.25%	\$7,036,484.54	\$6,365,031.14	10.54%

## Mount Pleasant Monthly Employment, Labor, Unemployment, & Unemployment Rate

Month	Labor Force	Employment	Unemployment	Unemployment Rate
January 2021	13511	12618	893	6.6
February 2021	13701	12788	923	6.7
March 2021	13677	12797	880	6.4
April 2021	13462	12697	765	5.7
May 2021	13402	12678	724	5.4
June 2021	13164	12288	876	6.7
July 2021	13213	12412	801	6.1
August 2021	13190	12481	709	5.4
September 2021	13297	12643	654	4.9
October 2021	13150(P)	12511(P)	639(P)	4.9(P)
November 2020	13426	12594	832	6.2
December 2020	13491	12643	848	6.3

P: Preliminary

TEXARKANA LAUS													
		November-21				October-21				November-20			
Area	Area Type	Labor Force	Employment	Unemployment	Rate	Labor Force	Employment	Unemployment	Rate	Labor Force	Employment	Unemployment	Rate
Bowie	County	39,254	37,260	1,994	5.1	38,936	36,958	1,978	5.1	38,943	36,407	2,536	6.5
Cass	County	11,935	11,247	688	5.8	11,972	11,270	702	5.9	12,364	11,348	1,016	8.2
Delta	County	2,394	2,288	106	4.4	2,402	2,289	113	4.7	2,442	2,313	129	5.3
Franklin	County	5,269	5,082	187	3.5	5,267	5,067	200	3.8	4,925	4,660	265	5.4
Hopkins	County	17,473	16,820	653	3.7	17,423	16,744	679	3.9	17,693	16,834	859	4.9
Lamar	County	24,046	22,874	1,172	4.9	24,099	22,878	1,221	5.1	23,901	22,459	1,442	6.0
Morris	County	4,424	4,029	395	8.9	4,403	3,995	408	9.3	4,755	4,107	648	13.6
Red River	County	5,124	4,844	280	5.5	5,109	4,835	274	5.4	5,215	4,894	321	6.2
Titus	County	13,167	12,566	601	4.6	13,144	12,509	635	4.8	13,426	12,594	832	6.2
Paris	City	11,548	10,936	612	5.3	11,566	10,938	628	5.4	11,505	10,737	768	6.7
Texarkana	City	15,012	14,305	707	4.7	14,985	14,189	796	5.3	15,074	13,978	1,096	7.3

Mount Pleasant is in the Texarkana LAUS area which encloses 9 counties (Bowie, Cass, Delta, Franklin, Hopkins, Lamar, Morris, Red River, Titus) and 2 cities (Paris and Texarkana TX).

- LAUS (Local Area Unemployment Statistics)
- WDA (Workforce Development Area)
- <http://netxworkforce.org>

**SALES TAX ANALYSIS**  
2021-2022

											Increase/	Increase/
	Fiscal Year	Fiscal Year	Fiscal Year	Fiscal Year	Fiscal Year	Fiscal Year	Fiscal Year		Fiscal Year		Decrease	Decrease
Month	2014-2015	2015-2016	2016-2017	2017-2018	2018-2019	2019-2020	2020-2021	YTD		YTD	Monthly	YTD
October	390,863	427,503	468,023	452,936	469,460	527,009	563,685	563,685	600,477	600,477	6.52%	6.52%
November	452,369	483,487	537,694	503,890	538,937	566,266	694,632	1,258,317	722,839	1,323,316	4.06%	5.17%
December	415,535	449,230	450,032	436,514	486,070	528,108	554,464	1,812,781				
January	408,005	449,471	452,418	479,294	479,869	514,014	588,357	2,401,138				
February	511,382	592,475	563,845	566,236	577,354	646,021	708,163	3,109,301				
March	367,865	380,986	427,259	461,022	458,329	488,500	547,037	3,656,338				
April	397,999	440,156	457,790	430,902	514,474	515,333	512,342	4,168,680				
May	495,205	546,057	576,330	557,748	598,418	591,833	792,405	4,961,085				
June	433,304	441,246	467,350	502,735	534,409	560,372	698,441	5,659,526				
July	416,684	457,958	467,298	568,397	529,547	555,480	651,804	6,311,330				
August	511,572	534,430	517,103	598,256	562,637	656,930	745,461	7,056,791				
September	434,331	439,577	464,046	480,972	518,839	555,026	645,866	7,702,657				
	5,235,113	5,642,575	5,849,188	6,038,902	6,268,343	6,704,892	7,702,657		1,323,316			

# Sales Tax Analysis

