

CITY OF MOUNT PLEASANT, TX
&
REGIONAL
SALES TAX & EMPLOYMENT
MONTHLY UPDATE

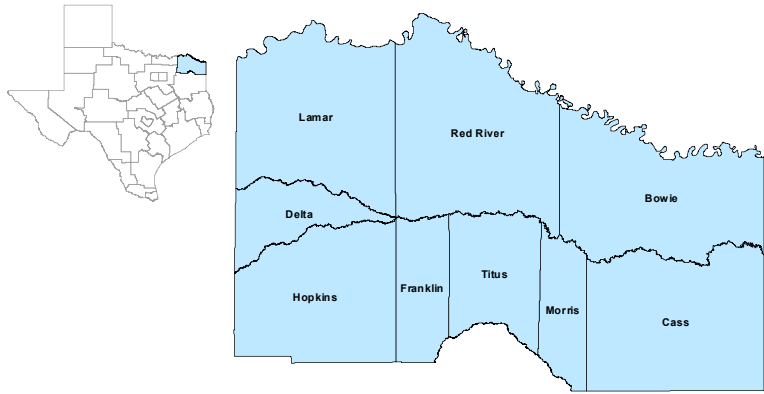


www.mpedc.org

903.572.6602

Updated on: 11/8/2021

North East Workforce Development Area



September 2021

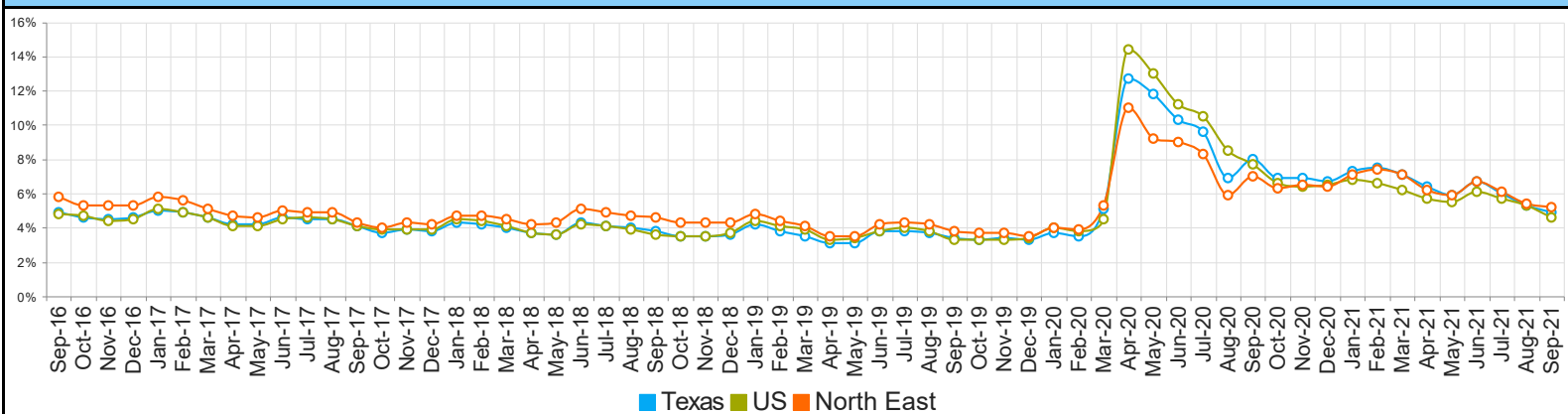
WDA Labor Force Statistics				
	Sep-21	Aug-21	Sep-20	Yearly Change
Civilian Labor Force	123,323	122,866	123,589	-266
Employed	116,898	116,178	114,934	1,964
Unemployed	6,425	6,688	8,655	-2,230
Unemployment Rate	5.2%	5.4%	7.0%	-1.8%

Texas Labor Force Statistics				
	Sep-21	Aug-21	Sep-20	Yearly Change
Civilian Labor Force	14,254,432	14,191,262	13,993,842	260,590
Employed	13,549,183	13,432,920	12,877,405	671,778
Unemployed	705,249	758,342	1,116,437	-411,188
Unemployment Rate	4.9%	5.3%	8.0%	-3.1%

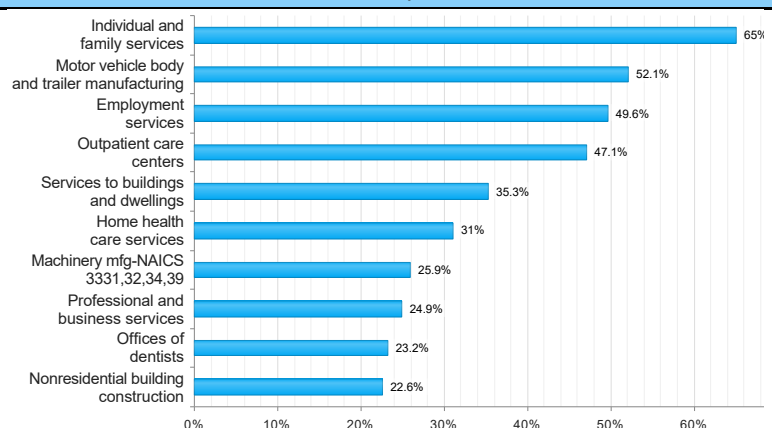
US Labor Force Statistics				
	Sep-21	Aug-21	Sep-20	Yearly Change
Civilian Labor Force	161,392,000	161,788,000	160,073,000	1,319,000
Employed	154,026,000	153,232,000	147,796,000	6,230,000
Unemployed	7,366,000	8,556,000	12,277,000	-4,911,000
Unemployment Rate	4.6%	5.3%	7.7%	-3.1%

Continued Claims for the Week of the 12th				
	Sep-21	Aug-21	Sep-20	Yearly Change
WDA	891	1,037	4,494	-3,603
Texas	92,894	123,285	634,196	-541,302

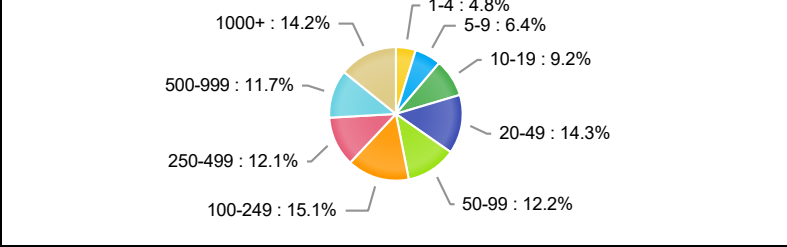
Historical Unemployment Rates



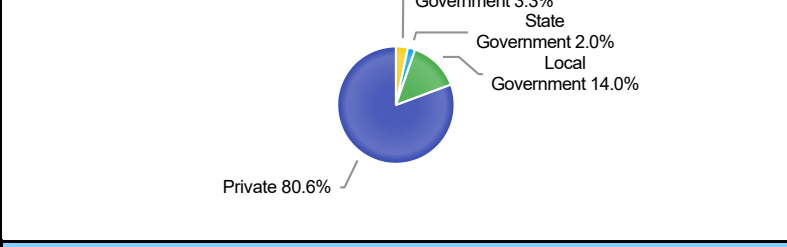
Projected Top Ten Fastest Growing Industries in WDA (% Growth 2018-2028)



Employment by Size Class (1st Quarter 2021)



Employment by Ownership (1st Quarter 2021)



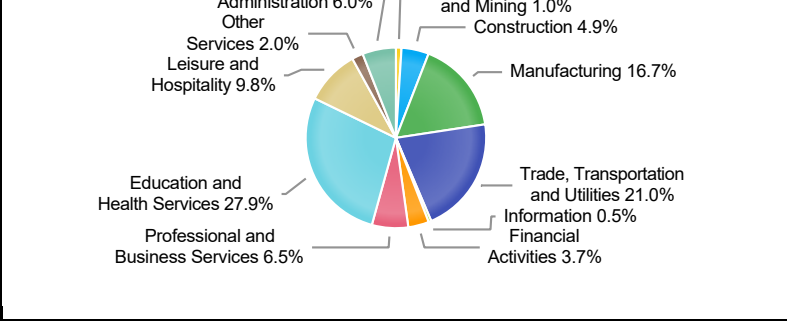
Average Weekly Wage (1st Quarter 2021)

	Q1 2021	Q4 2020	Q1 2020	Quarterly Change	Yearly Change
WDA	\$807	\$928	\$790	\$-121	\$17
Texas	\$1,261	\$1,294	\$1,231	\$-33	\$30
US	\$1,289	\$1,339	\$1,221	\$-50	\$68

Employment by Industry (1st Quarter 2021, Percent Change)

Industry	Employment	% of Total	% Quarterly Change	% Yearly Change
Natural Resources and Mining	1,072	1.0%	-4.0%	-10.3%
Construction	5,400	4.9%	0.6%	5.7%
Manufacturing	18,321	16.7%	0.2%	-2.0%
Trade, Transportation and Utilities	23,000	21.0%	-0.3%	2.4%
Information	505	0.5%	1.2%	-14.6%
Financial Activities	4,031	3.7%	-0.2%	0.3%
Professional and Business Services	7,125	6.5%	0.5%	2.2%
Education and Health Services	30,659	27.9%	-1.1%	-3.6%
Leisure and Hospitality	10,745	9.8%	-0.4%	-3.5%
Other Services	2,232	2.0%	-0.4%	-4.0%
Public Administration	6,621	6.0%	-1.2%	-3.7%

Employment by Industry (1st Quarter 2021)



CITY OF MOUNT PLEASANT, TX

City Sales and Use Tax Comparison Summary

City	Net Payment This Period	Comparable Payment Prior Year	% of Change	Payment YTD	Prior Year Payment YTD	% of Change
Mount Pleasant	\$600,476.64	\$563,685.17	6.52%	\$6,490,353.58	\$5,647,194.94	14.93%
Daingerfield	\$43,148.35	\$36,962.28	16.73%	\$446,597.27	\$398,413.74	12.09%
Mount Vernon	\$86,029.21	\$85,736.97	0.34%	\$884,586.59	\$758,794.04	16.57%
Paris	\$824,176.54	\$820,218.44	0.48%	\$9,143,557.24	\$7,937,966.58	15.18%
Pittsburg	\$105,897.48	\$89,363.89	18.50%	\$1,048,589.70	\$963,542.62	8.82%
Sulphur Springs	\$610,693.76	\$552,852.79	10.46%	\$6,324,732.95	\$5,725,289.54	10.47%

Mount Pleasant Monthly Employment, Labor, Unemployment, & Unemployment Rate

Month	Labor Force	Employment	Unemployment	Unemployment Rate
January 2021	13511	12618	893	6.6
February 2021	13701	12788	923	6.7
March 2021	13677	12797	880	6.4
April 2021	13462	12697	765	5.7
May 2021	13402	12678	724	5.4
June 2021	13164	12288	876	6.7
July 2021	13213	12412	801	6.1
August 2021	13190	12481	709	5.4
September 2021	13291(P)	12630(P)	661(P)	5.0(P)
October 2020	13638	12821	817	6.0
November 2020	13426	12594	832	6.2
December 2020	13491	12643	848	6.3

P: Preliminary

TEXARKANA LAUS

Area	Area Type	September-21				August-21				September-20			
		Labor Force	Employment	Unemployment	Rate	Labor Force	Employment	Unemployment	Rate	Labor Force	Employment	Unemployment	Rate
Bowie	County	38,844	36,833	2,011	5.2	38,540	36,391	2,149	5.6	38,893	36,052	2,841	7.3
Cass	County	12,061	11,341	720	6.0	12,149	11,375	774	6.4	12,395	11,359	1,036	8.4
Delta	County	2,418	2,305	113	4.7	2,402	2,288	114	4.7	2,416	2,283	133	5.5
Franklin	County	5,269	5,058	211	4.0	5,322	5,098	224	4.2	4,859	4,598	261	5.4
Hopkins	County	17,513	16,803	710	4.1	17,396	16,648	748	4.3	17,608	16,681	927	5.3
Lamar	County	24,248	22,976	1,272	5.2	24,132	22,921	1,211	5.0	23,904	22,346	1,558	6.5
Morris	County	4,470	4,033	437	9.8	4,498	4,032	466	10.4	4,761	4,104	657	13.8
Red River	County	5,209	4,919	290	5.6	5,237	4,944	293	5.6	5,236	4,906	330	6.3
Titus	County	13,291	12,630	661	5.0	13,190	12,481	709	5.4	13,517	12,605	912	6.7
Paris	City	11,652	10,984	668	5.7	11,660	10,958	702	6.0	11,551	10,683	868	7.5
Texarkana	City	14,968	14,141	827	5.5	14,925	13,972	953	6.4	15,065	13,842	1,223	8.1

Mount Pleasant is in the Texarkana LAUS area which encloses 9 counties (Bowie, Cass, Delta, Franklin, Hopkins, Lamar, Morris, Red River, Titus) and 2 cities (Paris and Texarkana TX).

- LAUS (Local Area Unemployment Statistics)
- WDA (Workforce Development Area)
- <http://netxworkforce.org>

SALES TAX ANALYSIS
2021-2022

SALES TAX ANALYSIS												
2021-2022												
	Fiscal Year	Fiscal Year	Fiscal Year	Fiscal Year	Fiscal Year	Fiscal Year	Fiscal Year		Fiscal Year		Increase/ Decrease	Increase/ Decrease
Month	2014-2015	2015-2016	2016-2017	2017-2018	2018-2019	2019-2020	2020-2021	YTD		YTD	Monthly	YTD
October	390,863	427,503	468,023	452,936	469,460	527,009	563,685	563,685	600,477	600,477	6.52%	6.52%
November	452,369	483,487	537,694	503,890	538,937	566,266	694,632	1,258,317				
December	415,535	449,230	450,032	436,514	486,070	528,108	554,464	1,812,781				
January	408,005	449,471	452,418	479,294	479,869	514,014	588,357	2,401,138				
February	511,382	592,475	563,845	566,236	577,354	646,021	708,163	3,109,301				
March	367,865	380,986	427,259	461,022	458,329	488,500	547,037	3,656,338				
April	397,999	440,156	457,790	430,902	514,474	515,333	512,342	4,168,680				
May	495,205	546,057	576,330	557,748	598,418	591,833	792,405	4,961,085				
June	433,304	441,246	467,350	502,735	534,409	560,372	698,441	5,659,526				
July	416,684	457,958	467,298	568,397	529,547	555,480	651,804	6,311,330				
August	511,572	534,430	517,103	598,256	562,637	656,930	745,461	7,056,791				
September	434,331	439,577	464,046	480,972	518,839	555,026	645,866	7,702,657				
	5,235,113	5,642,575	5,849,188	6,038,902	6,268,343	6,704,892	7,702,657		600,477			

Sales Tax Analysis

