

# CITY OF MOUNT PLEASANT, TX & REGIONAL SALES TAX & EMPLOYMENT MONTHLY UPDATE

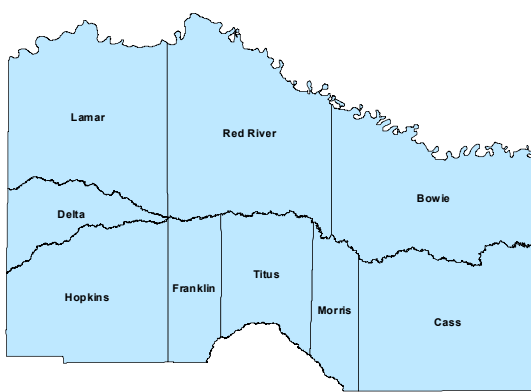
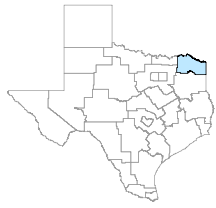


[www.mpedc.org](http://www.mpedc.org)

903.572.6602

Updated on: 9/27/2021

## North East Workforce Development Area



## August 2021

### WDA Labor Force Statistics

	Aug-21	Jul-21	Aug-20	Yearly Change
Civilian Labor Force	122,871	122,635	124,580	-1,709
Employed	116,174	115,201	117,190	-1,016
Unemployed	6,697	7,434	7,390	-693
Unemployment Rate	5.5%	6.1%	5.9%	-0.4%

### Texas Labor Force Statistics

	Aug-21	Jul-21	Aug-20	Yearly Change
Civilian Labor Force	14,192,497	14,191,587	14,090,773	101,724
Employed	13,433,358	13,341,020	13,117,102	316,256
Unemployed	759,139	850,567	973,671	-214,532
Unemployment Rate	5.3%	6.0%	6.9%	-1.6%

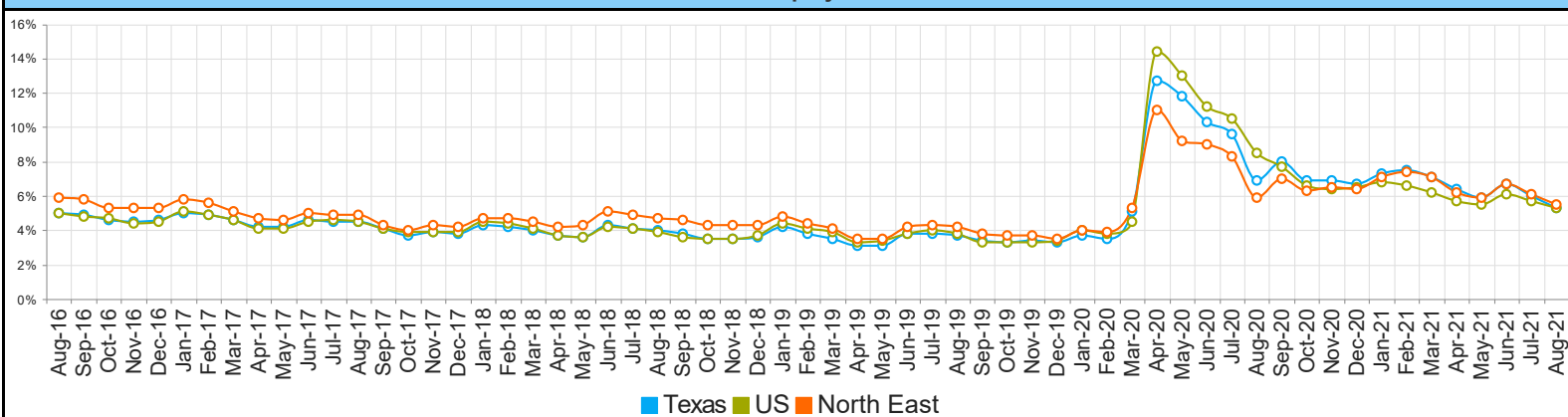
### US Labor Force Statistics

	Aug-21	Jul-21	Aug-20	Yearly Change
Civilian Labor Force	161,788,000	162,817,000	160,966,000	822,000
Employed	153,232,000	153,596,000	147,224,000	6,008,000
Unemployed	8,556,000	9,221,000	13,742,000	-5,186,000
Unemployment Rate	5.3%	5.7%	8.5%	-3.2%

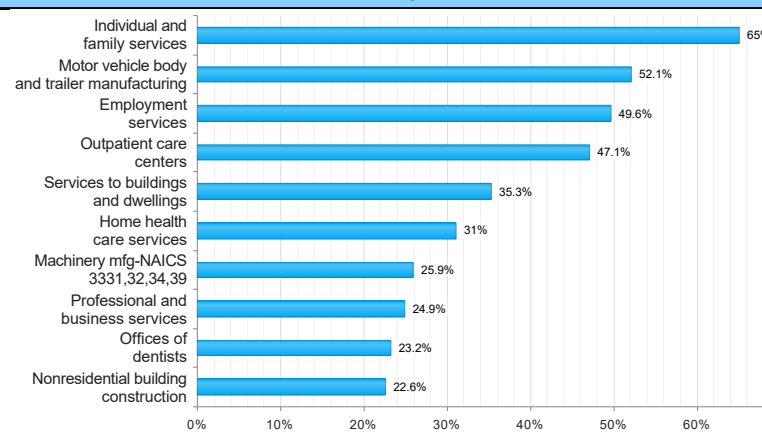
### Continued Claims for the Week of the 12th

	Aug-21	Jul-21	Aug-20	Yearly Change
WDA	1,002	1,165	5,505	-4,503
Texas	119,054	139,012	796,520	-677,466

## Historical Unemployment Rates



## Projected Top Ten Fastest Growing Industries in WDA (% Growth 2018-2028)



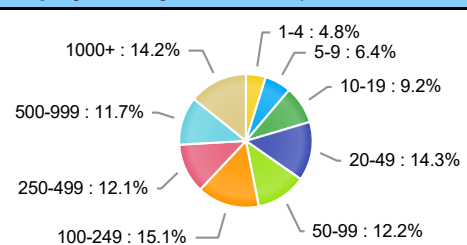
### Average Weekly Wage (1st Quarter 2021)

	Q1 2021	Q4 2020	Q1 2020	Quarterly Change	Yearly Change
WDA	\$807	\$928	\$790	\$-121	\$17
Texas	\$1,261	\$1,294	\$1,231	\$-33	\$30
US	\$1,289	\$1,339	\$1,221	\$-50	\$68

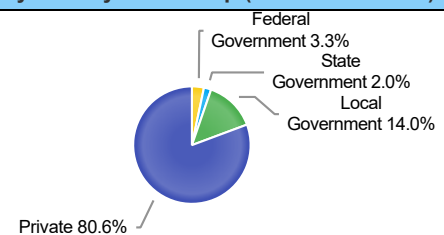
## Employment by Industry (1st Quarter 2021, Percent Change)

Industry	Employment	% of Total	% Quarterly Change	% Yearly Change
Natural Resources and Mining	1,072	1.0%	-4.0%	-10.3%
Construction	5,400	4.9%	0.6%	5.7%
Manufacturing	18,321	16.7%	0.2%	-2.0%
Trade, Transportation and Utilities	23,000	21.0%	-0.3%	2.4%
Information	505	0.5%	1.2%	-14.6%
Financial Activities	4,031	3.7%	-0.2%	0.3%
Professional and Business Services	7,125	6.5%	0.5%	2.2%
Education and Health Services	30,659	27.9%	-1.1%	-3.6%
Leisure and Hospitality	10,745	9.8%	-0.4%	-3.5%
Other Services	2,232	2.0%	-0.4%	-4.0%
Public Administration	6,621	6.0%	-1.2%	-3.7%

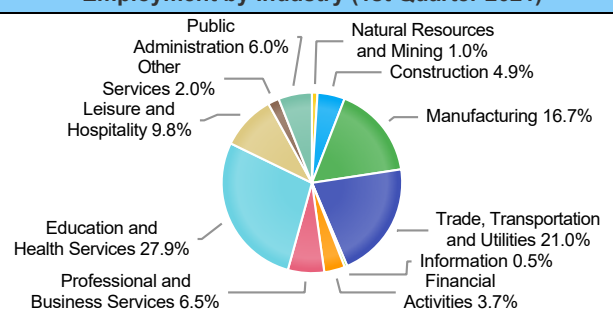
## Employment by Size Class (1st Quarter 2021)



## Employment by Ownership (1st Quarter 2021)



## Employment by Industry (1st Quarter 2021)



# CITY OF MOUNT PLEASANT, TX

## City Sales and Use Tax Comparison Summary

City	Net Payment This Period	Comparable Payment Prior Year	% of Change	Payment YTD	Prior Year Payment YTD	% of Change
Mount Pleasant	\$645,866.12	\$555,026.33	16.36%	\$5,889,876.94	\$5,083,509.77	15.86%
Daingerfield	\$45,473.20	\$45,864.91	-0.85%	\$403,448.92	\$361,451.46	11.61%
Mount Vernon	\$88,369.56	\$83,815.02	5.43%	\$798,557.38	\$673,057.07	18.64%
Paris	\$934,594.59	\$837,653.19	11.57%	\$8,319,380.70	\$7,117,748.14	16.88%
Pittsburg	\$110,786.61	\$90,048.88	23.02%	\$942,692.22	\$874,178.73	7.83%
Sulphur Springs	\$650,068.05	\$594,557.48	9.33%	\$5,714,039.19	\$5,172,436.75	10.47%

## Mount Pleasant Monthly Employment, Labor, Unemployment, & Unemployment Rate

Month	Labor Force	Employment	Unemployment	Unemployment Rate
January 2021	13511	12618	893	6.6
February 2021	13701	12788	923	6.7
March 2021	13677	12797	880	6.4
April 2021	13462	12697	765	5.7
May 2021	13402	12678	724	5.4
June 2021	13164	12288	876	6.7
July 2021	13220 (P)	12421 (P)	799 (P)	6.0 (P)
August 2020	13519	12719	800	5.9
September 2020	13517	12605	912	6.7
October 2020	13638	12821	817	6.0
November 2020	13426	12594	832	6.2
December 2020	13491	12643	848	6.3

P: Preliminary

TEXARKANA LAUS													
		August-21				July-21				August-20			
Area	Area Type	Labor Force	Employment	Unemployment	Rate	Labor Force	Employment	Unemployment	Rate	Labor Force	Employment	Unemployment	Rate
Bowie	County	38,554	36,404	2,150	5.6	38,673	36,284	2,389	6.2	39,187	36,730	2,457	6.3
Cass	County	12,146	11,373	773	6.4	12,133	11,269	864	7.1	12,594	11,705	889	7.1
Delta	County	2,402	2,288	114	4.7	2,388	2,259	129	5.4	2,433	2,319	114	4.7
Franklin	County	5,320	5,097	223	4.2	5,315	5,073	242	4.6	5,002	4,779	223	4.5
Hopkins	County	17,394	16,646	748	4.3	17,408	16,598	810	4.7	17,770	17,002	768	4.3
Lamar	County	24,133	22,915	1,218	5.0	23,820	22,453	1,367	5.7	24,031	22,694	1,337	5.6
Morris	County	4,498	4,031	467	10.4	4,513	4,001	512	11.3	4,767	4,227	540	11.3
Red River	County	5,235	4,942	293	5.6	5,172	4,852	320	6.2	5,277	5,015	262	5.0
Titus	County	13,189	12,478	711	5.4	13,213	12,412	801	6.1	13,519	12,719	800	5.9
Paris	City	11,658	10,955	703	6.0	11,510	10,734	776	6.7	11,604	10,850	754	6.5
Texarkana	City	14,927	13,977	950	6.4	14,910	13,931	979	6.6	15,187	14,102	1,085	7.1

Mount Pleasant is in the Texarkana LAUS area which encloses 9 counties (Bowie, Cass, Delta, Franklin, Hopkins, Lamar, Morris, Red River, Titus) and 2 cities (Paris and Texarkana TX).

- LAUS (Local Area Unemployment Statistics)
- WDA (Workforce Development Area)
- <http://netxworkforce.org>

SALES TAX ANALYSIS  
2020-2021

											Increase/	Increase/
	Fiscal Year	Fiscal Year	Fiscal Year	Fiscal Year	Fiscal Year	Fiscal Year	Fiscal Year		Fiscal Year		Decrease	Decrease
Month	2013-2014	2014-2015	2015-2016	2016-2017	2017-2018	2018-2019	2019-2020	YTD	2020-2021	YTD	Monthly	YTD
October	466,718	390,863	427,503	468,023	452,936	469,460	527,009	527,009	563,685	563,685	6.95%	6.95%
November	399,865	452,369	483,487	537,694	503,890	538,937	566,266	1,093,275	694,632	1,258,317	22.66%	15.10%
December	358,657	415,535	449,230	450,032	436,514	486,070	528,108	1,621,383	554,464	1,812,781	4.99%	11.80%
January	361,388	408,005	449,471	452,418	479,294	479,869	514,014	2,135,397	588,357	2,401,138	14.46%	12.44%
February	494,252	511,382	592,475	563,845	566,236	577,354	646,021	2,781,418	708,163	3,109,301	9.61%	11.79%
March	348,463	367,865	380,986	427,259	461,022	458,329	488,500	3,269,918	547,037	3,656,338	11.89%	11.83%
April	380,928	397,999	440,156	457,790	430,902	514,474	515,333	3,785,251	512,342	4,168,680	-0.58%	10.13%
May	465,468	495,205	546,057	576,330	557,748	598,418	591,833	4,377,084	792,405	4,961,085	33.88%	13.34%
June	408,455	433,304	441,246	467,350	502,735	534,409	560,372	4,937,456	698,441	5,659,526	24.63%	14.62%
July	428,111	416,684	457,958	467,298	568,397	529,547	555,480	5,492,936	651,804	6,311,330	17.34%	14.90%
August	464,441	511,572	534,430	517,103	598,256	562,637	656,930	6,149,866	745,461	7,056,791	13.47%	14.75%
September	424,622	434,331	439,577	464,046	480,972	518,839	555,026	6,704,892	645,866	7,702,657	16.37%	14.88%
	5,001,366	5,235,113	5,642,575	5,849,188	6,038,902	6,268,343	6,704,892		7,702,657			

# Sales Tax Analysis

