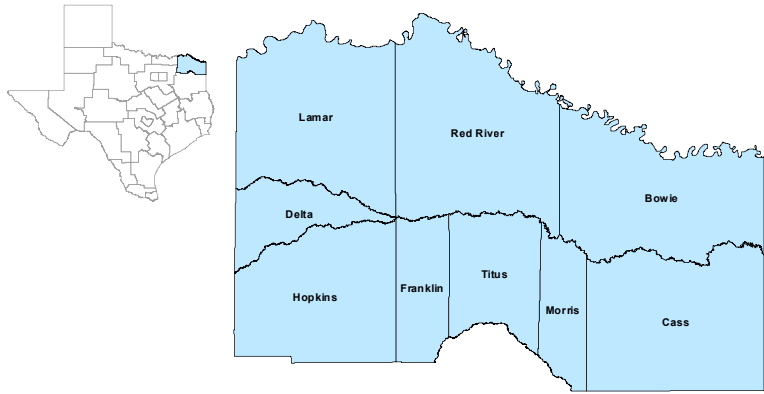


North East Workforce Development Area



August 2021

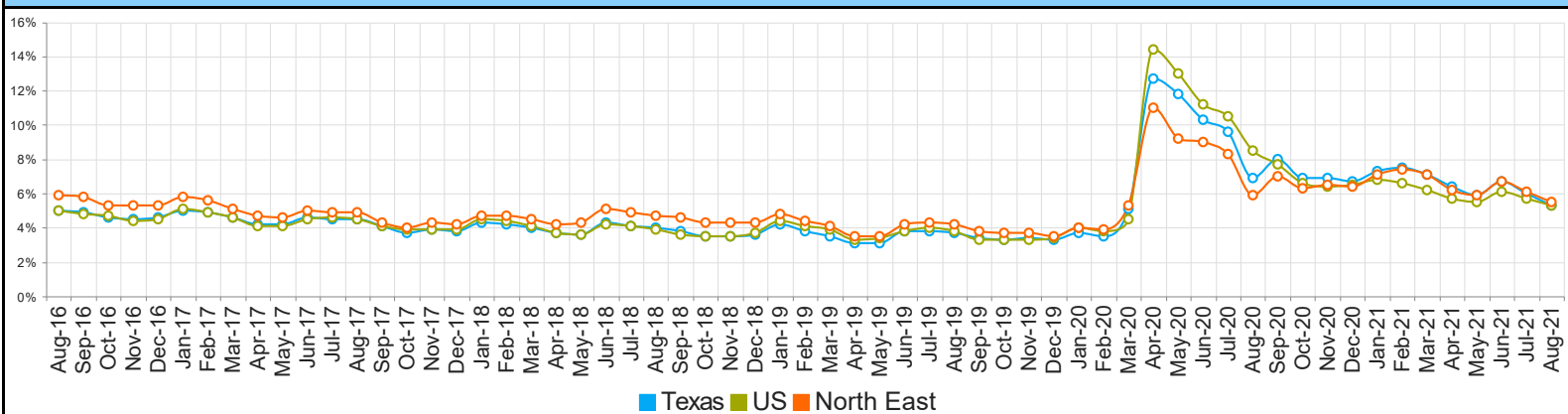
WDA Labor Force Statistics				
	Aug-21	Jul-21	Aug-20	Yearly Change
Civilian Labor Force	122,871	122,635	124,580	-1,709
Employed	116,174	115,201	117,190	-1,016
Unemployed	6,697	7,434	7,390	-693
Unemployment Rate	5.5%	6.1%	5.9%	-0.4%

Texas Labor Force Statistics				
	Aug-21	Jul-21	Aug-20	Yearly Change
Civilian Labor Force	14,192,497	14,191,587	14,090,773	101,724
Employed	13,433,358	13,341,020	13,117,102	316,256
Unemployed	759,139	850,567	973,671	-214,532
Unemployment Rate	5.3%	6.0%	6.9%	-1.6%

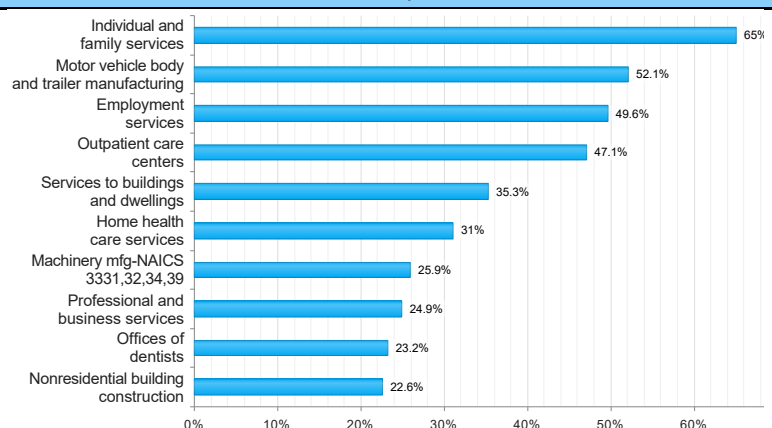
US Labor Force Statistics				
	Aug-21	Jul-21	Aug-20	Yearly Change
Civilian Labor Force	161,788,000	162,817,000	160,966,000	822,000
Employed	153,232,000	153,596,000	147,224,000	6,008,000
Unemployed	8,556,000	9,221,000	13,742,000	-5,186,000
Unemployment Rate	5.3%	5.7%	8.5%	-3.2%

Continued Claims for the Week of the 12th				
	Aug-21	Jul-21	Aug-20	Yearly Change
WDA	1,002	1,165	5,505	-4,503
Texas	119,054	139,012	796,520	-677,466

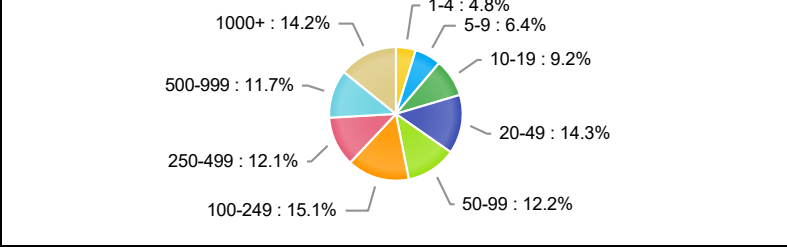
Historical Unemployment Rates



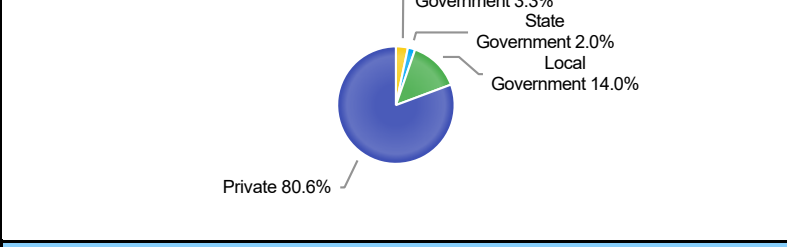
Projected Top Ten Fastest Growing Industries in WDA (% Growth 2018-2028)



Employment by Size Class (1st Quarter 2021)



Employment by Ownership (1st Quarter 2021)



Average Weekly Wage (1st Quarter 2021)					
	Q1 2021	Q4 2020	Q1 2020	Quarterly Change	Yearly Change
WDA	\$807	\$928	\$790	\$-121	\$17
Texas	\$1,261	\$1,294	\$1,231	\$-33	\$30
US	\$1,289	\$1,339	\$1,221	\$-50	\$68

Employment by Industry (1st Quarter 2021, Percent Change)

Industry	Employment	% of Total	% Quarterly Change	% Yearly Change
Natural Resources and Mining	1,072	1.0%	-4.0%	-10.3%
Construction	5,400	4.9%	0.6%	5.7%
Manufacturing	18,321	16.7%	0.2%	-2.0%
Trade, Transportation and Utilities	23,000	21.0%	-0.3%	2.4%
Information	505	0.5%	1.2%	-14.6%
Financial Activities	4,031	3.7%	-0.2%	0.3%
Professional and Business Services	7,125	6.5%	0.5%	2.2%
Education and Health Services	30,659	27.9%	-1.1%	-3.6%
Leisure and Hospitality	10,745	9.8%	-0.4%	-3.5%
Other Services	2,232	2.0%	-0.4%	-4.0%
Public Administration	6,621	6.0%	-1.2%	-3.7%

Employment by Industry (1st Quarter 2021)

