

CITY OF MOUNT PLEASANT, TX
&
REGIONAL
SALES TAX & EMPLOYMENT
MONTHLY UPDATE



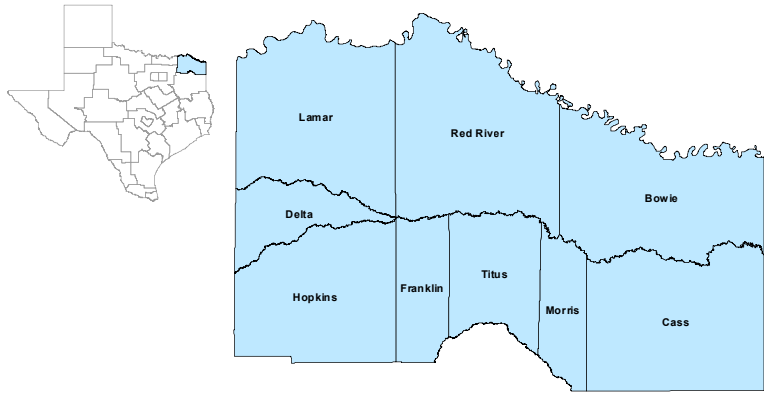
www.mpedc.org

903.572.6602

Updated on: 8/23/2021

North East Workforce Development Area

July 2021



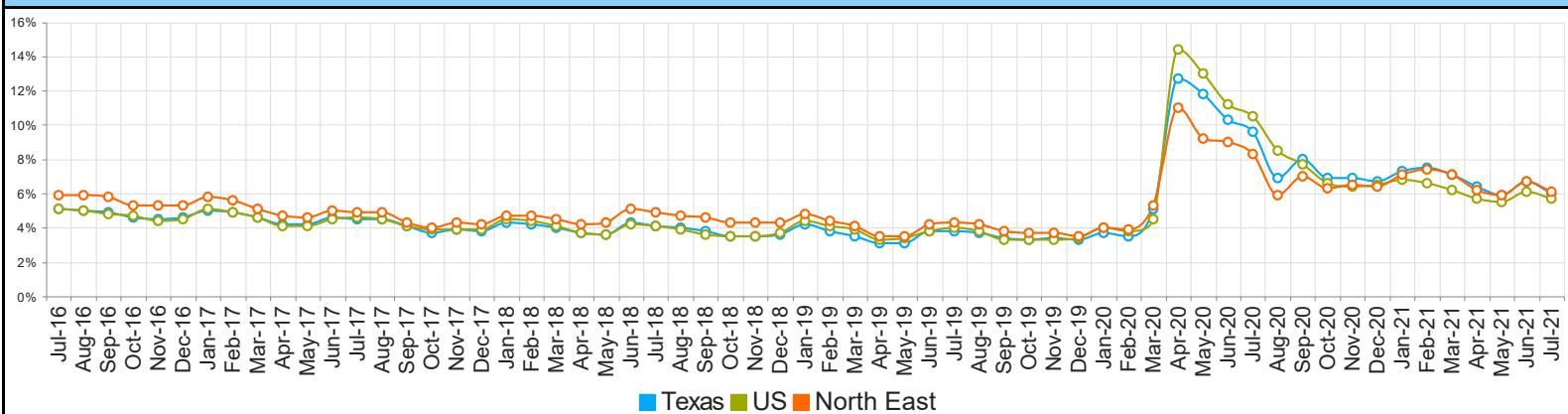
WDA Labor Force Statistics				
	Jul-21	Jun-21	Jul-20	Yearly Change
Civilian Labor Force	122,703	122,814	123,213	-510
Employed	115,265	114,611	113,038	2,227
Unemployed	7,438	8,203	10,175	-2,737
Unemployment Rate	6.1%	6.7%	8.3%	-2.2%

Texas Labor Force Statistics				
	Jul-21	Jun-21	Jul-20	Yearly Change
Civilian Labor Force	14,192,398	14,126,847	14,010,729	181,669
Employed	13,340,757	13,186,927	12,661,727	679,030
Unemployed	851,641	939,920	1,349,002	-497,361
Unemployment Rate	6.0%	6.7%	9.6%	-3.6%

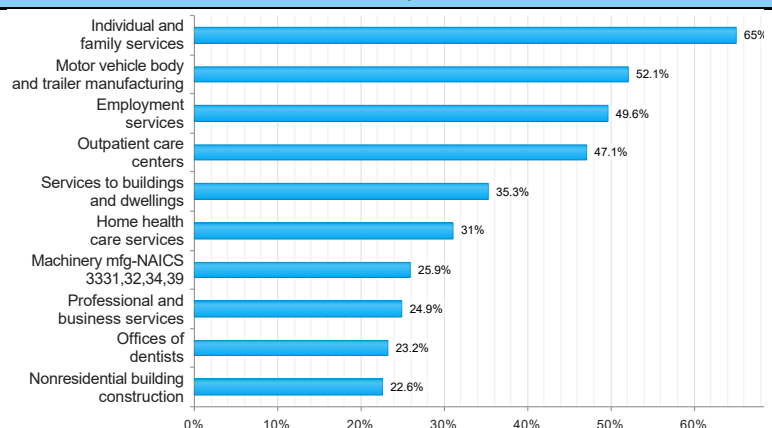
US Labor Force Statistics				
	Jul-21	Jun-21	Jul-20	Yearly Change
Civilian Labor Force	162,817,000	162,167,000	161,374,000	1,443,000
Employed	153,596,000	152,283,000	144,492,000	9,104,000
Unemployed	9,221,000	9,883,000	16,882,000	-7,661,000
Unemployment Rate	5.7%	6.1%	10.5%	-4.8%

Continued Claims for the Week of the 12th				
	Jul-21	Jun-21	Jul-20	Yearly Change
WDA	1,125	1,136	6,601	-5,476
Texas	134,829	137,658	954,004	-819,175

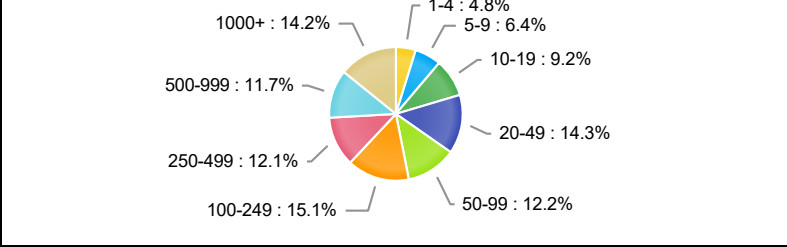
Historical Unemployment Rates



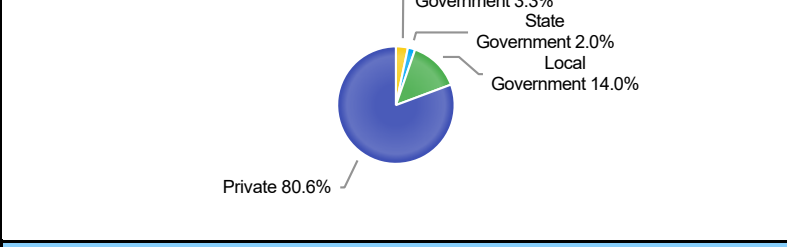
Projected Top Ten Fastest Growing Industries in WDA (% Growth 2018-2028)



Employment by Size Class (1st Quarter 2021)



Employment by Ownership (1st Quarter 2021)

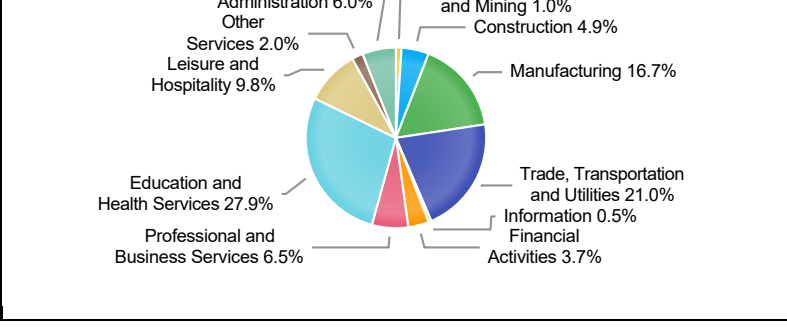


Average Weekly Wage (1st Quarter 2021)					
	Q1 2021	Q4 2020	Q1 2020	Quarterly Change	Yearly Change
WDA	\$807	\$928	\$790	\$-121	\$17
Texas	\$1,261	\$1,294	\$1,231	\$-33	\$30
US	\$1,289	\$1,339	\$1,221	\$-50	\$68

Employment by Industry (1st Quarter 2021, Percent Change)

Industry	Employment	% of Total	% Quarterly Change	% Yearly Change
Natural Resources and Mining	1,072	1.0%	-4.0%	-10.3%
Construction	5,400	4.9%	0.6%	5.7%
Manufacturing	18,321	16.7%	0.2%	-2.0%
Trade, Transportation and Utilities	23,000	21.0%	-0.3%	2.4%
Information	505	0.5%	1.2%	-14.6%
Financial Activities	4,031	3.7%	-0.2%	0.3%
Professional and Business Services	7,125	6.5%	0.5%	2.2%
Education and Health Services	30,659	27.9%	-1.1%	-3.6%
Leisure and Hospitality	10,745	9.8%	-0.4%	-3.5%
Other Services	2,232	2.0%	-0.4%	-4.0%
Public Administration	6,621	6.0%	-1.2%	-3.7%

Employment by Industry (1st Quarter 2021)



CITY OF MOUNT PLEASANT, TX

City Sales and Use Tax Comparison Summary

City	Net Payment This Period	Comparable Payment Prior Year	% of Change	Payment YTD	Prior Year Payment YTD	% of Change
Mount Pleasant	\$745,461.06	\$656,929.95	13.47%	\$5,244,010.82	\$4,528,483.44	15.80%
Daingerfield	\$50,913.19	\$46,885.21	8.59%	\$357,975.72	\$315,586.55	13.43%
Mount Vernon	\$101,125.46	\$93,979.79	7.60%	\$710,187.82	\$589,242.05	20.52%
Paris	\$1,063,208.63	\$992,683.72	7.10%	\$7,384,786.11	\$6,280,094.95	17.59%
Pittsburg	\$115,151.71	\$118,853.14	-3.11%	\$831,905.61	\$784,129.85	6.09%
Sulphur Springs	\$734,818.75	\$711,476.58	3.28%	\$5,063,971.14	\$4,577,879.27	10.61%

Mount Pleasant Monthly Employment, Labor, Unemployment, & Unemployment Rate

Month	Labor Force	Employment	Unemployment	Unemployment Rate
January 2021	13511	12618	893	6.6
February 2021	13701	12788	923	6.7
March 2021	13677	12797	880	6.4
April 2021	13462	12697	765	5.7
May 2021	13402	12678	724	5.4
June 2021	13411 (P)	12542 (P)	869 (P)	6.5 (P)
July 2020	13383(T)	12275(T)	1108(T)	8.3(T)
August 2020	13519(T)	12719(T)	800(T)	5.9(T)
September 2020	13517(T)	12605(T)	912(T)	6.7(T)
October 2020	13638(T)	12821(T)	817(T)	6.0(T)
November 2020	13426(T)	12594(T)	832(T)	6.2(T)
December 2020	13491(T)	12643(T)	848(T)	6.3(T)

P: Preliminary T: Data were subject to revision on April 16, 2021

TEXARKANA LAUS

Area	Area Type	July-21				June-21				July-20			
		Labor Force	Employment	Unemployment	Rate	Labor Force	Employment	Unemployment	Rate	Labor Force	Employment	Unemployment	Rate
Bowie	County	38,682	36,292	2,390	6.2	39,100	36,455	2,645	6.8	38,787	35,442	3,345	8.6
Cass	County	12,141	11,276	865	7.1	12,230	11,246	984	8.0	12,334	11,197	1,137	9.2
Delta	County	2,387	2,260	127	5.3	2,402	2,265	137	5.7	2,394	2,232	162	6.8
Franklin	County	5,320	5,076	244	4.6	5,272	5,009	263	5.0	4,913	4,617	296	6.0
Hopkins	County	17,426	16,611	815	4.7	17,322	16,400	922	5.3	17,530	16,476	1,054	6.0
Lamar	County	23,833	22,469	1,364	5.7	23,671	22,182	1,489	6.3	23,872	21,882	1,990	8.3
Morris	County	4,518	4,004	514	11.4	4,505	3,959	546	12.1	4,827	4,126	701	14.5
Red River	County	5,176	4,856	320	6.2	5,148	4,807	341	6.6	5,173	4,791	382	7.4
Titus	County	13,220	12,421	799	6.0	13,164	12,288	876	6.7	13,383	12,275	1,108	8.3
Paris	City	11,507	10,742	765	6.6	11,471	10,605	866	7.5	11,565	10,461	1,104	9.5
Texarkana	City	14,910	13,934	976	6.5	15,080	13,996	1,084	7.2	15,077	13,607	1,470	9.7

Mount Pleasant is in the Texarkana LAUS area which encloses 9 counties (Bowie, Cass, Delta, Franklin, Hopkins, Lamar, Morris, Red River, Titus) and 2 cities (Paris and Texarkana TX).

- LAUS (Local Area Unemployment Statistics)
- WDA (Workforce Development Area)
- <http://netxworkforce.org>

**SALES TAX ANALYSIS
2020-2021**

										Increase/	Increase/	
	Fiscal Year	Fiscal Year	Fiscal Year	Fiscal Year	Fiscal Year	Fiscal Year	Fiscal Year		Fiscal Year		Decrease	Decrease
Month	2013-2014	2014-2015	2015-2016	2016-2017	2017-2018	2018-2019	2019-2020	YTD	2020-2021	YTD	Monthly	YTD
October	466,718	390,863	427,503	468,023	452,936	469,460	527,009	527,009	563,685	563,685	6.95%	6.95%
November	399,865	452,369	483,487	537,694	503,890	538,937	566,266	1,093,275	694,632	1,258,317	22.66%	15.10%
December	358,657	415,535	449,230	450,032	436,514	486,070	528,108	1,621,383	554,464	1,812,781	4.99%	11.80%
January	361,388	408,005	449,471	452,418	479,294	479,869	514,014	2,135,397	588,357	2,401,138	14.46%	12.44%
February	494,252	511,382	592,475	563,845	566,236	577,354	646,021	2,781,418	708,163	3,109,301	9.61%	11.79%
March	348,463	367,865	380,986	427,259	461,022	458,329	488,500	3,269,918	547,037	3,656,338	11.89%	11.83%
April	380,928	397,999	440,156	457,790	430,902	514,474	515,333	3,785,251	512,342	4,168,680	-0.58%	10.13%
May	465,468	495,205	546,057	576,330	557,748	598,418	591,833	4,377,084	792,405	4,961,085	33.88%	13.34%
June	408,455	433,304	441,246	467,350	502,735	534,409	560,372	4,937,456	698,441	5,659,526	24.63%	14.62%
July	428,111	416,684	457,958	467,298	568,397	529,547	555,480	5,492,936	651,804	6,311,330	17.34%	14.90%
August	464,441	511,572	534,430	517,103	598,256	562,637	656,930	6,149,866	745,461	7,056,791	13.47%	14.75%
September	424,622	434,331	439,577	464,046	480,972	518,839	555,026	6,704,892				
	5,001,366	5,235,113	5,642,575	5,849,188	6,038,902	6,268,343	6,704,892		7,056,791			

Sales Tax Analysis

