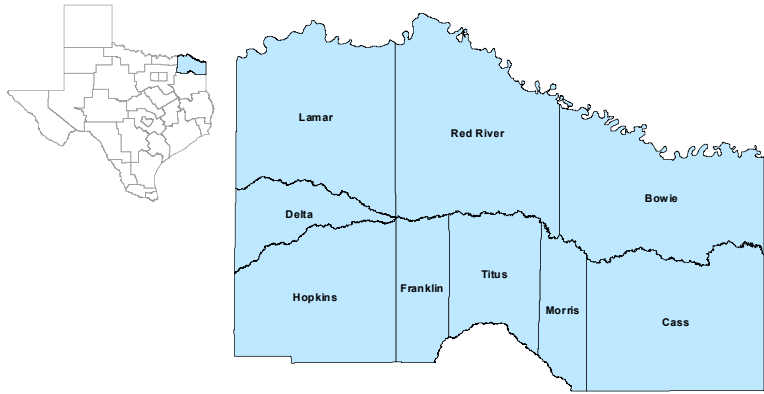


North East Workforce Development Area

June 2021



WDA Labor Force Statistics

	Jun-21	May-21	Jun-20	Yearly Change
Civilian Labor Force	122,967	122,821	122,609	358
Employed	114,761	115,524	111,583	3,178
Unemployed	8,206	7,297	11,026	-2,820
Unemployment Rate	6.7%	5.9%	9.0%	-2.3%

Texas Labor Force Statistics

	Jun-21	May-21	Jun-20	Yearly Change
Civilian Labor Force	14,127,096	14,068,550	14,074,215	52,881
Employed	13,188,254	13,232,181	12,620,076	568,178
Unemployed	938,842	836,369	1,454,139	-515,297
Unemployment Rate	6.6%	5.9%	10.3%	-3.7%

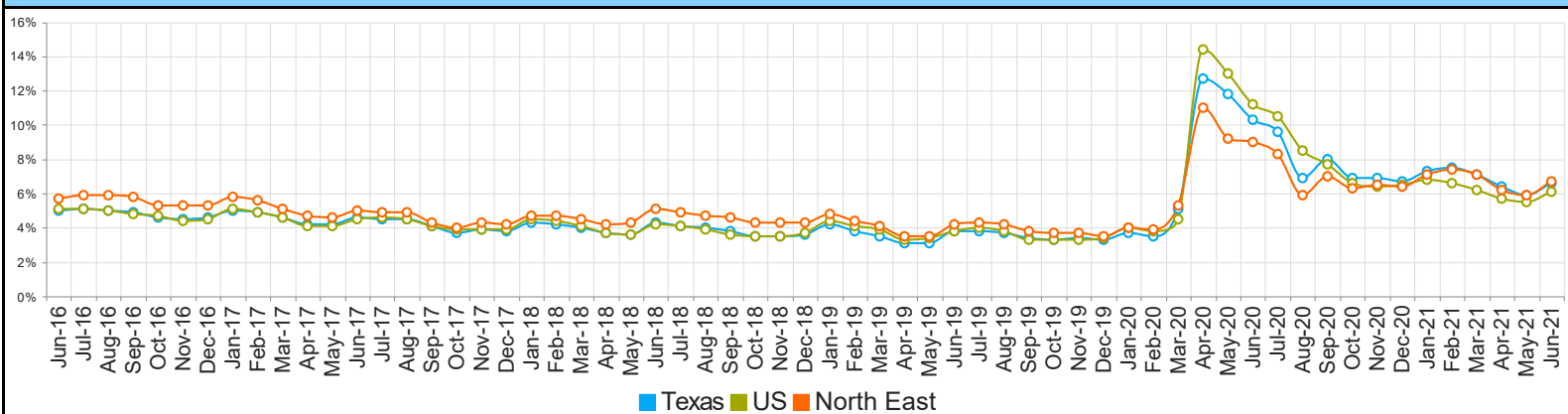
US Labor Force Statistics

	Jun-21	May-21	Jun-20	Yearly Change
Civilian Labor Force	162,167,000	160,607,000	160,883,000	1,284,000
Employed	152,283,000	151,778,000	142,811,000	9,472,000
Unemployed	9,883,000	8,829,000	18,072,000	-8,189,000
Unemployment Rate	6.1%	5.5%	11.2%	-5.1%

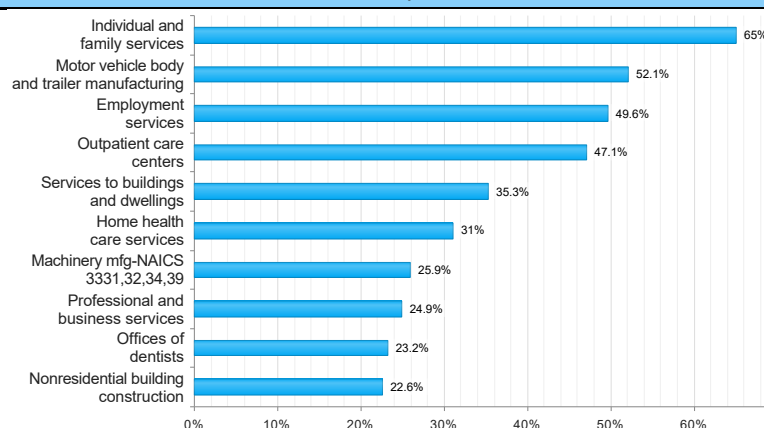
Continued Claims for the Week of the 12th

	Jun-21	May-21	Jun-20	Yearly Change
WDA	1,072	1,207	6,573	-5,501
Texas	129,213	147,608	952,104	-822,891

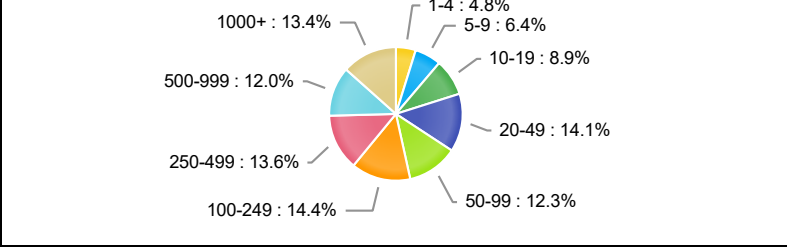
Historical Unemployment Rates



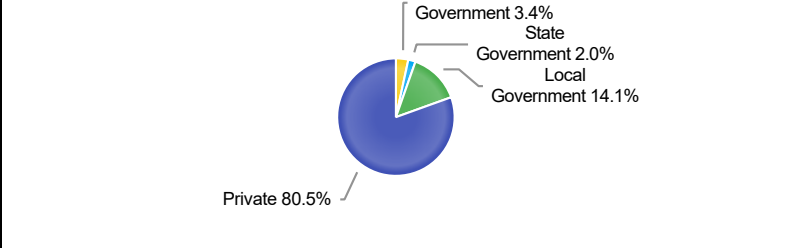
Projected Top Ten Fastest Growing Industries in WDA (% Growth 2018-2028)



Employment by Size Class (4th Quarter 2020)



Employment by Ownership (4th Quarter 2020)



Average Weekly Wage (4th Quarter 2020)

	Q4 2020	Q3 2020	Q4 2019	Quarterly Change	Yearly Change
WDA	\$927	\$808	\$825	\$119	\$102
Texas	\$1,294	\$1,150	\$1,187	\$144	\$107
US	\$1,339	\$1,172	\$1,185	\$167	\$154

Employment by Industry (4th Quarter 2020, Percent Change)

Industry	Employment	% of Total	% Quarterly Change	% Yearly Change
Natural Resources and Mining	1,111	1.0%	-4.7%	-10.9%
Construction	5,360	4.9%	-1.7%	3.9%
Manufacturing	18,291	16.6%	4.1%	-1.1%
Trade, Transportation and Utilities	23,025	20.9%	2.2%	-2.0%
Information	497	0.5%	5.3%	-18.4%
Financial Activities	4,032	3.7%	1.1%	-0.9%
Professional and Business Services	7,309	6.6%	5.5%	4.8%
Education and Health Services	30,954	28.1%	3.6%	-2.6%
Leisure and Hospitality	10,778	9.8%	1.3%	-5.9%
Other Services	2,227	2.0%	-0.3%	-4.8%
Public Administration	6,701	6.1%	-2.7%	-3.0%

Employment by Industry (4th Quarter 2020)

