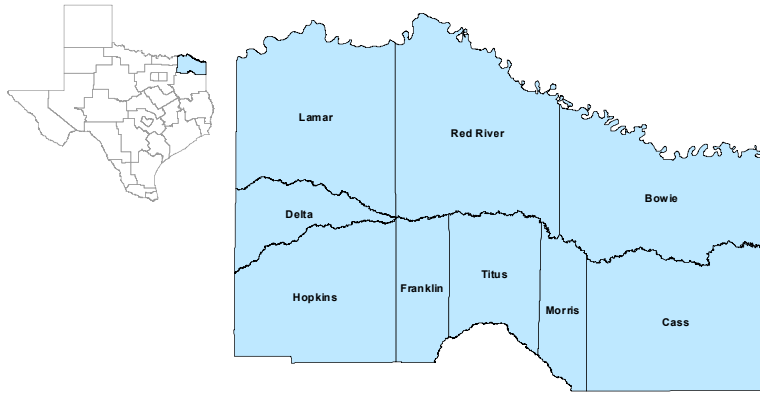


North East Workforce Development Area

April 2021



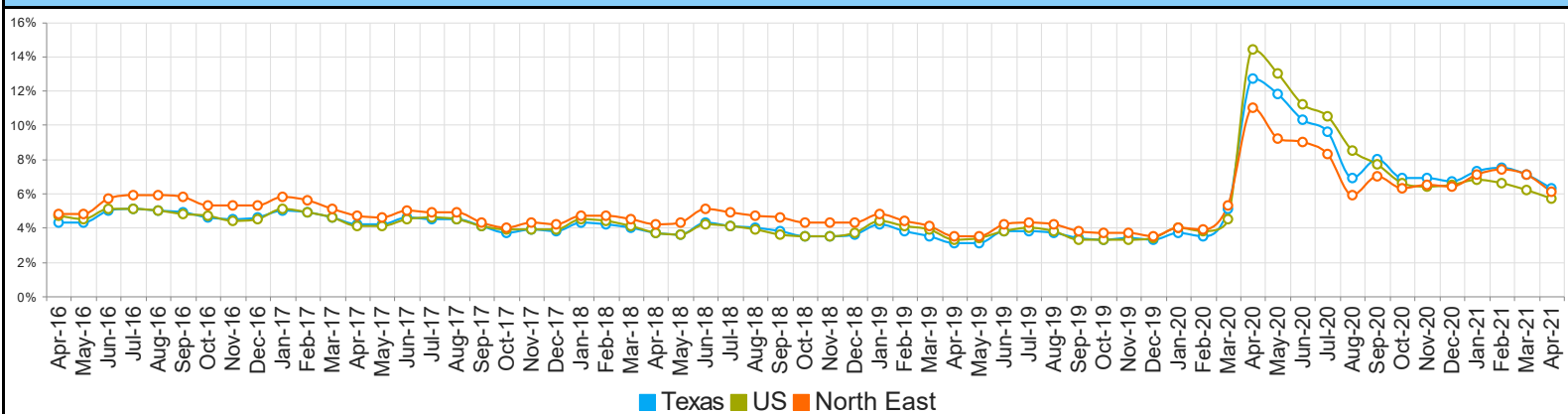
WDA Labor Force Statistics				
	Apr-21	Mar-21	Apr-20	Yearly Change
Civilian Labor Force	122,908	124,590	115,635	7,273
Employed	115,370	115,802	102,962	12,408
Unemployed	7,538	8,788	12,673	-5,135
Unemployment Rate	6.1%	7.1%	11.0%	-4.9%

Texas Labor Force Statistics				
	Apr-21	Mar-21	Apr-20	Yearly Change
Civilian Labor Force	14,043,919	14,094,131	13,326,311	717,608
Employed	13,162,609	13,087,177	11,627,585	1,535,024
Unemployed	881,310	1,006,954	1,698,726	-817,416
Unemployment Rate	6.3%	7.1%	12.7%	-6.4%

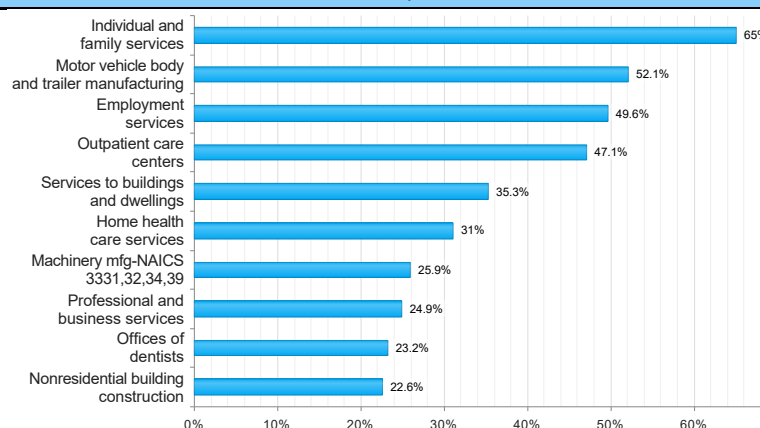
US Labor Force Statistics				
	Apr-21	Mar-21	Apr-20	Yearly Change
Civilian Labor Force	160,379,000	160,398,000	155,830,000	4,549,000
Employed	151,160,000	150,493,000	133,326,000	17,834,000
Unemployed	9,220,000	9,905,000	22,504,000	-13,284,000
Unemployment Rate	5.7%	6.2%	14.4%	-8.7%

Continued Claims for the Week of the 12th				
	Apr-21	Mar-21	Apr-20	Yearly Change
WDA	1,288	1,685	6,687	-5,399
Texas	163,934	210,643	960,717	-796,783

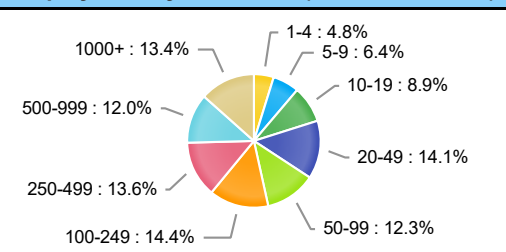
Historical Unemployment Rates



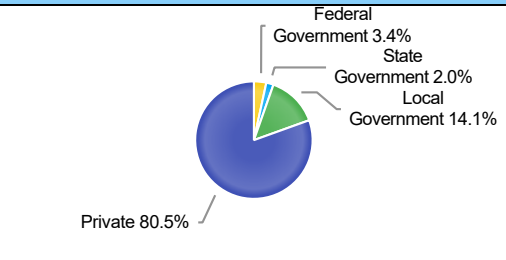
Projected Top Ten Fastest Growing Industries in WDA (% Growth 2018-2028)



Employment by Size Class (4th Quarter 2020)



Employment by Ownership (4th Quarter 2020)



Average Weekly Wage (4th Quarter 2020)

	Q4 2020	Q3 2020	Q4 2019	Quarterly Change	Yearly Change
WDA	\$927	\$808	\$825	\$119	\$102
Texas	\$1,294	\$1,150	\$1,187	\$144	\$107
US	\$1,339	\$1,173	\$1,185	\$166	\$154

Employment by Industry (4th Quarter 2020, Percent Change)

Industry	Employment	% of Total	% Quarterly Change	% Yearly Change
Natural Resources and Mining	1,111	1.0%	-4.7%	-10.9%
Construction	5,360	4.9%	-1.7%	3.9%
Manufacturing	18,291	16.6%	4.1%	-1.1%
Trade, Transportation and Utilities	23,025	20.9%	2.2%	-2.0%
Information	497	0.5%	5.3%	-18.4%
Financial Activities	4,032	3.7%	1.1%	-0.9%
Professional and Business Services	7,309	6.6%	5.5%	4.8%
Education and Health Services	30,954	28.1%	3.6%	-2.6%
Leisure and Hospitality	10,778	9.8%	1.3%	-5.9%
Other Services	2,227	2.0%	-0.3%	-4.8%
Public Administration	6,701	6.1%	-2.7%	-3.0%

Employment by Industry (4th Quarter 2020)

