

CITY OF MOUNT PLEASANT, TX
&
REGIONAL
SALES TAX & EMPLOYMENT
MONTHLY UPDATE



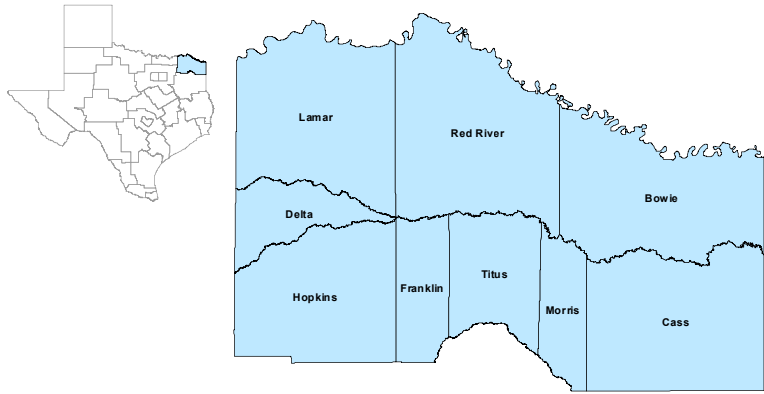
www.mpedc.org

903.572.6602

Updated on: 5/24/2021

North East Workforce Development Area

April 2021



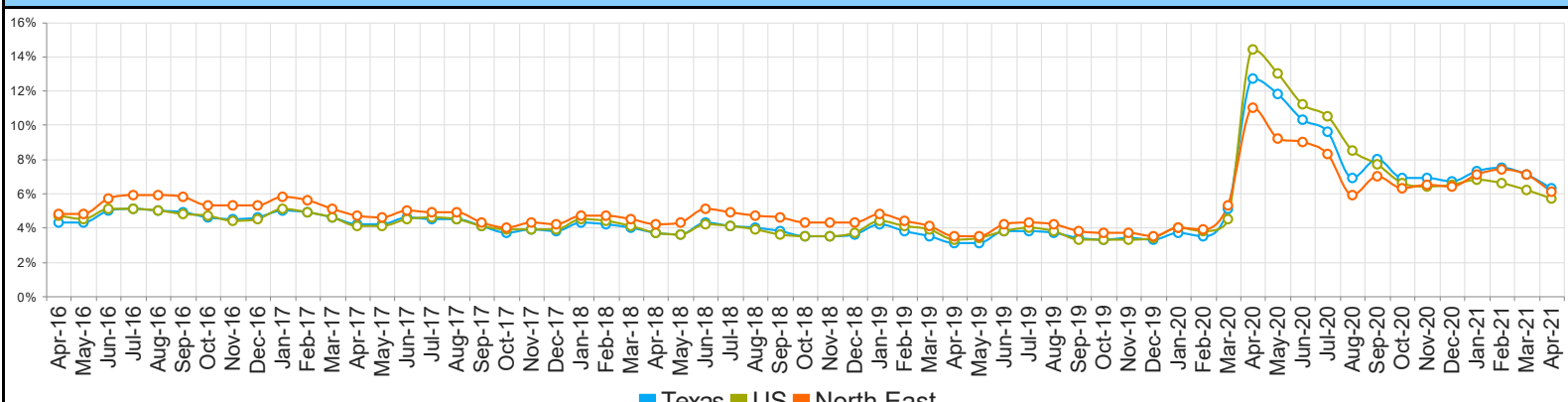
WDA Labor Force Statistics				
	Apr-21	Mar-21	Apr-20	Yearly Change
Civilian Labor Force	122,908	124,590	115,635	7,273
Employed	115,370	115,802	102,962	12,408
Unemployed	7,538	8,788	12,673	-5,135
Unemployment Rate	6.1%	7.1%	11.0%	-4.9%

Texas Labor Force Statistics				
	Apr-21	Mar-21	Apr-20	Yearly Change
Civilian Labor Force	14,043,919	14,094,131	13,326,311	717,608
Employed	13,162,609	13,087,177	11,627,585	1,535,024
Unemployed	881,310	1,006,954	1,698,726	-817,416
Unemployment Rate	6.3%	7.1%	12.7%	-6.4%

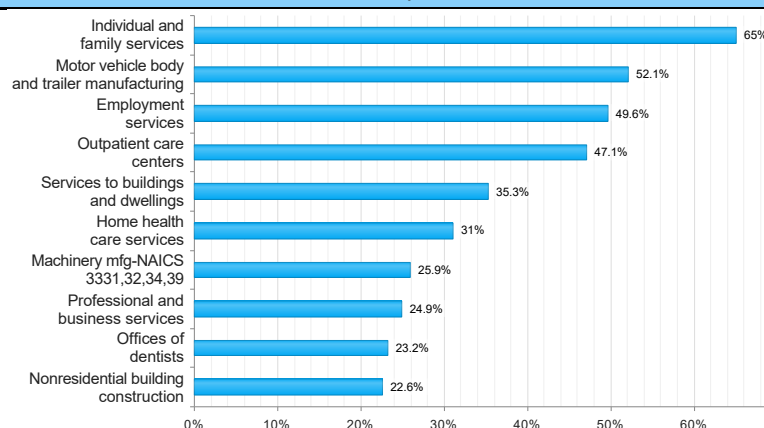
US Labor Force Statistics				
	Apr-21	Mar-21	Apr-20	Yearly Change
Civilian Labor Force	160,379,000	160,398,000	155,830,000	4,549,000
Employed	151,160,000	150,493,000	133,326,000	17,834,000
Unemployed	9,220,000	9,905,000	22,504,000	-13,284,000
Unemployment Rate	5.7%	6.2%	14.4%	-8.7%

Continued Claims for the Week of the 12th				
	Apr-21	Mar-21	Apr-20	Yearly Change
WDA	1,288	1,685	6,687	-5,399
Texas	163,934	210,643	960,717	-796,783

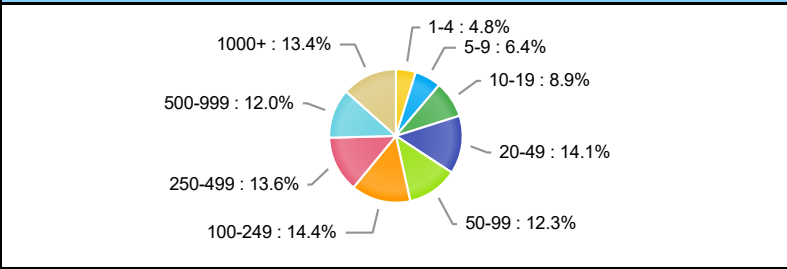
Historical Unemployment Rates



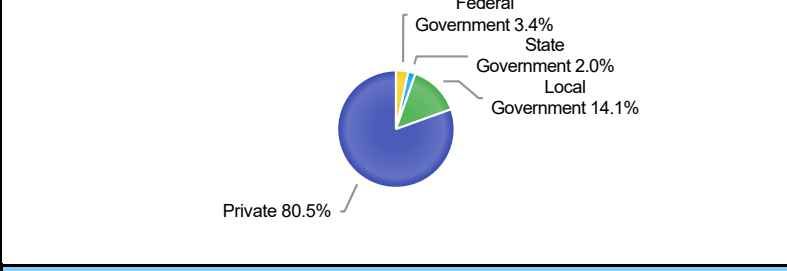
Projected Top Ten Fastest Growing Industries in WDA (% Growth 2018-2028)



Employment by Size Class (4th Quarter 2020)



Employment by Ownership (4th Quarter 2020)



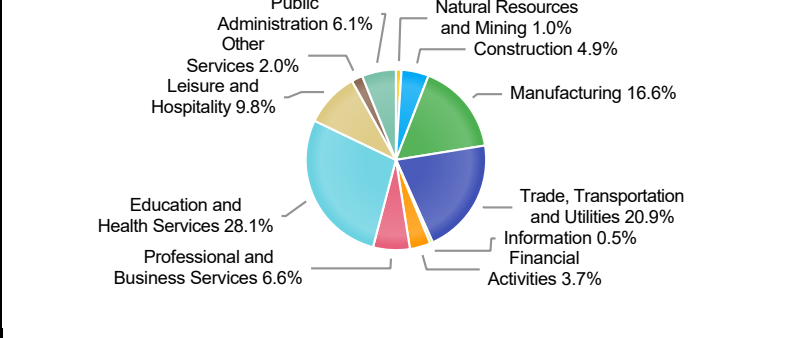
Average Weekly Wage (4th Quarter 2020)

	Q4 2020	Q3 2020	Q4 2019	Quarterly Change	Yearly Change
WDA	\$927	\$808	\$825	\$119	\$102
Texas	\$1,294	\$1,150	\$1,187	\$144	\$107
US	\$1,339	\$1,173	\$1,185	\$166	\$154

Employment by Industry (4th Quarter 2020, Percent Change)

Industry	Employment	% of Total	% Quarterly Change	% Yearly Change
Natural Resources and Mining	1,111	1.0%	-4.7%	-10.9%
Construction	5,360	4.9%	-1.7%	3.9%
Manufacturing	18,291	16.6%	4.1%	-1.1%
Trade, Transportation and Utilities	23,025	20.9%	2.2%	-2.0%
Information	497	0.5%	5.3%	-18.4%
Financial Activities	4,032	3.7%	1.1%	-0.9%
Professional and Business Services	7,309	6.6%	5.5%	4.8%
Education and Health Services	30,954	28.1%	3.6%	-2.6%
Leisure and Hospitality	10,778	9.8%	1.3%	-5.9%
Other Services	2,227	2.0%	-0.3%	-4.8%
Public Administration	6,701	6.1%	-2.7%	-3.0%

Employment by Industry (4th Quarter 2020)



CITY OF MOUNT PLEASANT, TX

City Sales and Use Tax Comparison Summary

City	Net Payment This Period	Comparable Payment Prior Year	% of Change	Payment YTD	Prior Year Payment YTD	% of Change
Mount Pleasant	\$792,404.63	\$591,833.06	33.88%	\$3,148,305.00	\$2,755,701.71	14.24%
Daingerfield	\$53,557.35	\$41,293.43	29.69%	\$214,890.81	\$184,649.00	16.37%
Mount Vernon	\$105,664.51	\$78,152.89	35.20%	\$435,138.02	\$340,434.68	27.81%
Paris	\$1,171,780.79	\$830,134.70	41.15%	\$4,502,417.53	\$3,787,076.43	18.88%
Pittsburg	\$130,847.10	\$100,552.62	30.12%	\$520,138.65	\$499,462.53	4.13%
Sulphur Springs	\$793,954.61	\$548,950.20	44.63%	\$3,092,054.82	\$2,699,546.38	14.53%

Mount Pleasant Monthly Employment, Labor, Unemployment, & Unemployment Rate

Month	Labor Force	Employment	Unemployment	Unemployment Rate
January 2021	13511	12618	893	6.6
February 2021	13701	12788	923	6.7
March 2021	13705(P)	12826(P)	879(P)	6.4(P)
April 2020	12574(T)	11330(T)	1244(T)	9.9(T)
May 2020	12656(T)	11575(T)	1081(T)	8.5(T)
June 2020	13276(T)	12072(T)	1204(T)	9.1(T)
July 2020	13383(T)	12275(T)	1108(T)	8.3(T)
August 2020	13519(T)	12719(T)	800(T)	5.9(T)
September 2020	13517(T)	12605(T)	912(T)	6.7(T)
October 2020	13638(T)	12821(T)	817(T)	6.0(T)
November 2020	13426(T)	12594(T)	832(T)	6.2(T)
December 2020	13491(T)	12643(T)	848(T)	6.3(T)

P: Preliminary T: Data were subject to revision on April 16, 2021

TEXARKANA LAUS

Area	Area Type	April-21				March-21				April-20			
		Labor Force	Employment	Unemployment	Rate	Labor Force	Employment	Unemployment	Rate	Labor Force	Employment	Unemployment	Rate
Bowie	County	38,841	36,431	2,410	6.2	39,028	36,248	2,780	7.1	36,751	31,719	5,032	13.7
Cass	County	12,169	11,264	905	7.4	12,476	11,428	1,048	8.4	11,741	10,420	1,321	11.3
Delta	County	2,392	2,276	116	4.8	2,440	2,298	142	5.8	2,250	2,065	185	8.2
Franklin	County	5,004	4,748	256	5.1	5,077	4,777	300	5.9	4,530	4,177	353	7.8
Hopkins	County	17,519	16,697	822	4.7	17,868	16,923	945	5.3	16,516	15,228	1,288	7.8
Lamar	County	23,650	22,228	1,422	6.0	23,972	22,254	1,718	7.2	21,695	19,427	2,268	10.5
Morris	County	4,652	4,128	524	11.3	4,727	4,139	588	12.4	4,779	4,182	597	12.5
Red River	County	5,238	4,904	334	6.4	5,325	4,938	387	7.3	4,799	4,414	385	8.0
Titus	County	13,443	12,694	749	5.6	13,677	12,797	880	6.4	12,574	11,330	1,244	9.9
Paris	City	11,431	10,627	804	7.0	11,592	10,639	953	8.2	10,497	9,288	1,209	11.5
Texarkana	City	15,000	13,987	1,013	6.8	15,082	13,917	1,165	7.7	14,437	12,178	2,259	15.6

Mount Pleasant is in the Texarkana LAUS area which encloses 9 counties (Bowie, Cass, Delta, Franklin, Hopkins, Lamar, Morris, Red River, Titus) and 2 cities (Paris and Texarkana TX).

- LAUS (Local Area Unemployment Statistics)
- WDA (Workforce Development Area)
- <http://netxworkforce.org>

SALES TAX ANALYSIS
2020-2021

										Increase/	Increase/	
	Fiscal Year	Fiscal Year	Fiscal Year	Fiscal Year	Fiscal Year	Fiscal Year	Fiscal Year		Fiscal Year		Decrease	Decrease
Month	2013-2014	2014-2015	2015-2016	2016-2017	2017-2018	2018-2019	2019-2020	YTD	2020-2021	YTD	Monthly	YTD
October	466,718	390,863	427,503	468,023	452,936	469,460	527,009	527,009	563,685	563,685	6.95%	6.95%
November	399,865	452,369	483,487	537,694	503,890	538,937	566,266	1,093,275	694,632	1,258,317	22.66%	15.10%
December	358,657	415,535	449,230	450,032	436,514	486,070	528,108	1,621,383	554,464	1,812,781	4.99%	11.80%
January	361,388	408,005	449,471	452,418	479,294	479,869	514,014	2,135,397	588,357	2,401,138	14.46%	12.44%
February	494,252	511,382	592,475	563,845	566,236	577,354	646,021	2,781,418	708,163	3,109,301	9.61%	11.79%
March	348,463	367,865	380,986	427,259	461,022	458,329	488,500	3,269,918	547,037	3,656,338	11.89%	11.83%
April	380,928	397,999	440,156	457,790	430,902	514,474	515,333	3,785,251	512,342	4,168,680	-0.58%	10.13%
May	465,468	495,205	546,057	576,330	557,748	598,418	591,833	4,377,084	792,405	4,961,085	33.88%	13.34%
June	408,455	433,304	441,246	467,350	502,735	534,409	560,372	4,937,456				
July	428,111	416,684	457,958	467,298	568,397	529,547	555,480	5,492,936				
August	464,441	511,572	534,430	517,103	598,256	562,637	656,930	6,149,866				
September	424,622	434,331	439,577	464,046	480,972	518,839	555,026	6,704,892				
	5,001,366	5,235,113	5,642,575	5,849,188	6,038,902	6,268,343	6,704,892		4,961,085			

Sales Tax Analysis

