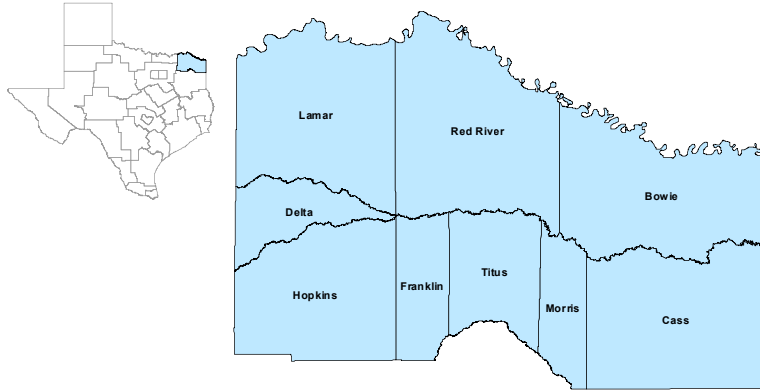


## North East Workforce Development Area



## March 2021

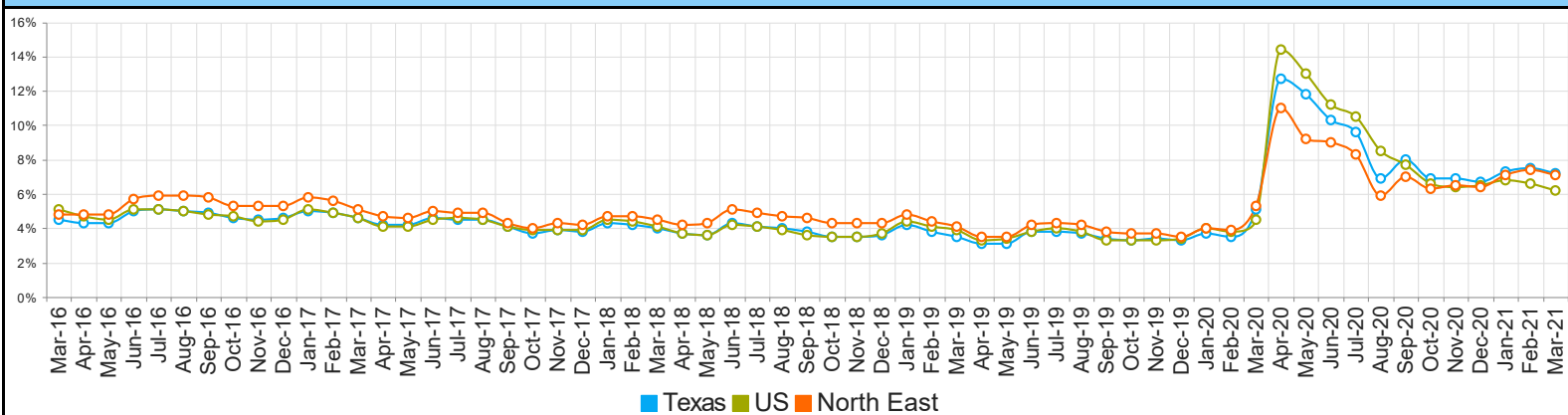
WDA Labor Force Statistics				
	Mar-21	Feb-21	Mar-20	Yearly Change
Civilian Labor Force	124,491	124,343	121,871	2,620
Employed	115,667	115,094	115,400	267
Unemployed	8,824	9,249	6,471	2,353
Unemployment Rate	7.1%	7.4%	5.3%	1.8%

Texas Labor Force Statistics				
	Mar-21	Feb-21	Mar-20	Yearly Change
Civilian Labor Force	14,096,630	14,047,933	13,953,661	142,969
Employed	13,086,898	12,989,157	13,248,772	-161,874
Unemployed	1,009,732	1,058,776	704,889	304,843
Unemployment Rate	7.2%	7.5%	5.1%	2.1%

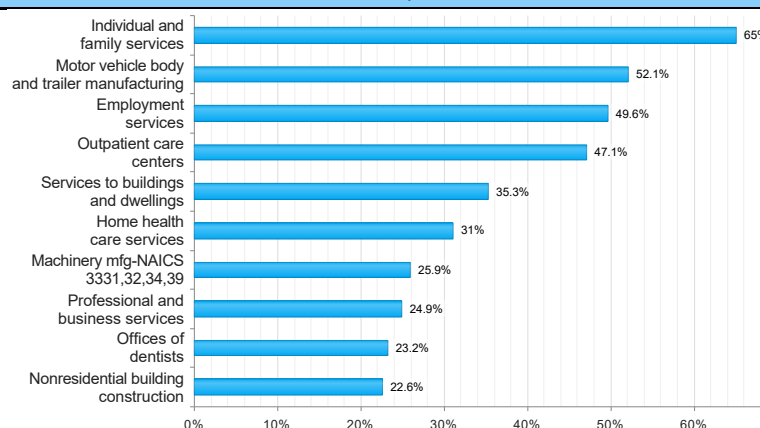
US Labor Force Statistics				
	Mar-21	Feb-21	Mar-20	Yearly Change
Civilian Labor Force	160,397,000	160,008,000	162,537,000	-2,140,000
Employed	150,493,000	149,522,000	155,167,000	-4,674,000
Unemployed	9,905,000	10,486,000	7,370,000	2,535,000
Unemployment Rate	6.2%	6.6%	4.5%	1.7%

Continued Claims for the Week of the 12th				
	Mar-21	Feb-21	Mar-20	Yearly Change
WDA	1,644	1,830	960	684
Texas	204,996	221,149	124,065	80,931

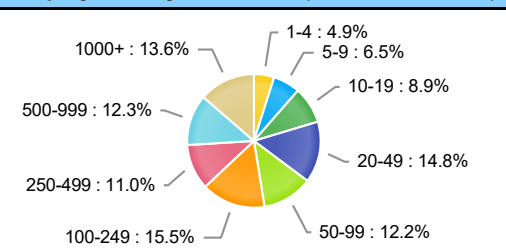
## Historical Unemployment Rates



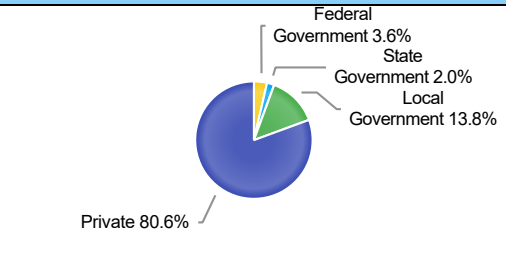
## Projected Top Ten Fastest Growing Industries in WDA (% Growth 2018-2028)



## Employment by Size Class (3rd Quarter 2020)



## Employment by Ownership (3rd Quarter 2020)



## Average Weekly Wage (3rd Quarter 2020)

	Q3 2020	Q2 2020	Q3 2019	Quarterly Change	Yearly Change
WDA	\$810	\$819	\$780	\$-9	\$30
Texas	\$1,149	\$1,156	\$1,108	\$-7	\$41
US	\$1,173	\$1,188	\$1,092	\$-15	\$81

## Employment by Industry (3rd Quarter 2020, Percent Change)

Industry	Employment	% of Total	% Quarterly Change	% Yearly Change
Natural Resources and Mining	1,163	1.1%	-2.0%	-8.5%
Construction	5,426	5.0%	1.3%	6.2%
Manufacturing	17,418	16.2%	1.6%	-6.1%
Trade, Transportation and Utilities	22,609	21.0%	4.0%	-1.8%
Information	472	0.4%	-0.6%	-21.2%
Financial Activities	3,986	3.7%	0.5%	-3.0%
Professional and Business Services	6,901	6.4%	3.1%	-3.4%
Education and Health Services	30,081	27.9%	1.6%	-1.6%
Leisure and Hospitality	10,528	9.8%	9.7%	-9.9%
Other Services	2,224	2.1%	2.6%	-8.3%
Public Administration	6,895	6.4%	1.1%	-0.7%

## Employment by Industry (3rd Quarter 2020)

