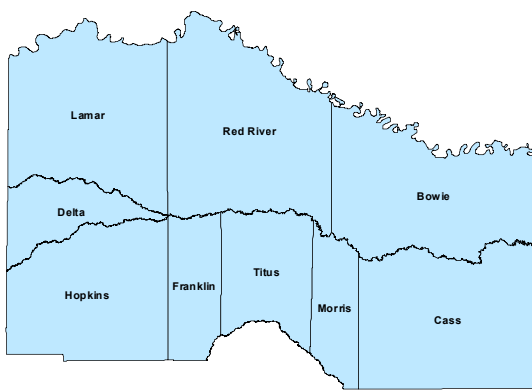
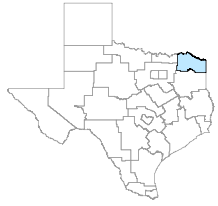


North East Workforce Development Area



January 2021

WDA Labor Force Statistics

	Jan-21	Dec-20	Jan-20	Yearly Change
Civilian Labor Force	123,756	124,062	123,505	251
Employed	114,961	116,074	118,553	-3,592
Unemployed	8,795	7,988	4,952	3,843
Unemployment Rate	7.1%	6.4%	4.0%	3.1%

Texas Labor Force Statistics

	Jan-21	Dec-20	Jan-20	Yearly Change
Civilian Labor Force	14,027,811	14,139,874	14,161,146	-133,335
Employed	13,000,052	13,191,324	13,634,710	-634,658
Unemployed	1,027,759	948,550	526,436	501,323
Unemployment Rate	7.3%	6.7%	3.7%	3.6%

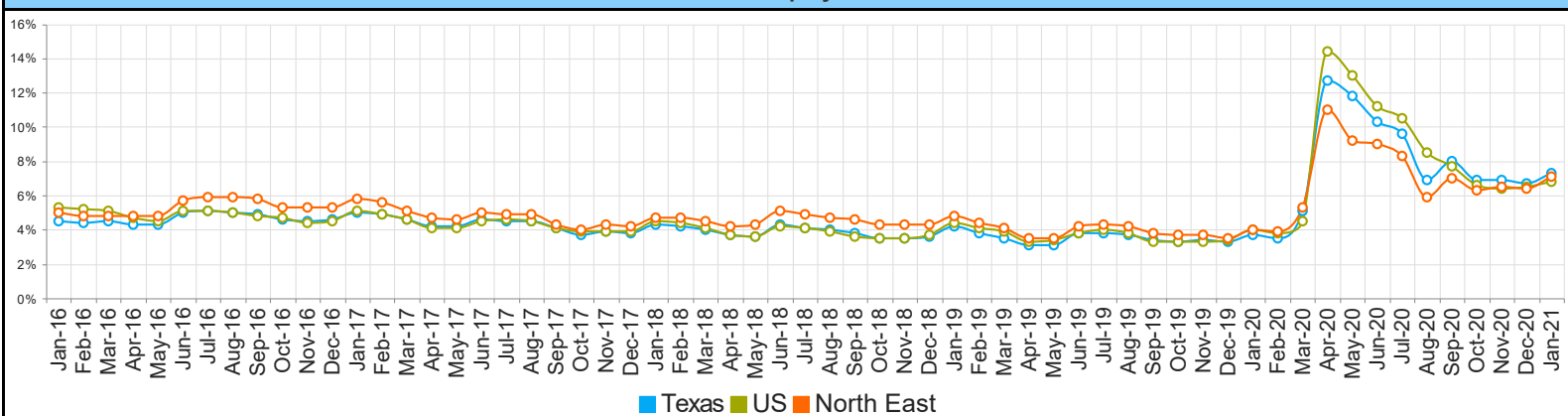
US Labor Force Statistics

	Jan-21	Dec-20	Jan-20	Yearly Change
Civilian Labor Force	159,234,000	160,017,000	163,497,000	-4,263,000
Employed	148,383,000	149,613,000	156,994,000	-8,611,000
Unemployed	10,851,000	10,404,000	6,504,000	4,347,000
Unemployment Rate	6.8%	6.5%	4.0%	2.8%

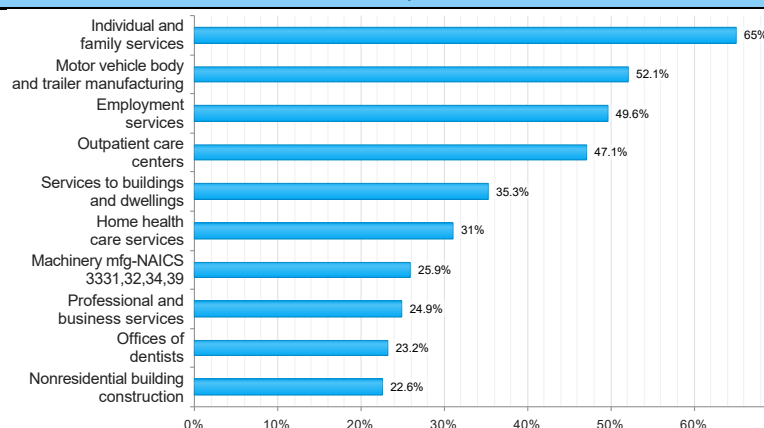
Continued Claims for the Week of the 12th

	Jan-21	Dec-20	Jan-20	Yearly Change
WDA	1,803	1,897	920	883
Texas	229,574	244,808	110,507	119,067

Historical Unemployment Rates



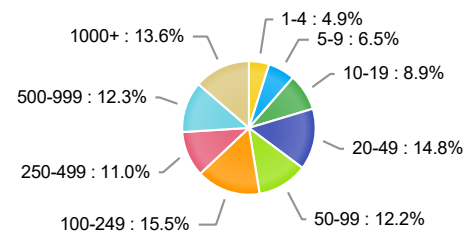
Projected Top Ten Fastest Growing Industries in WDA (% Growth 2018-2028)



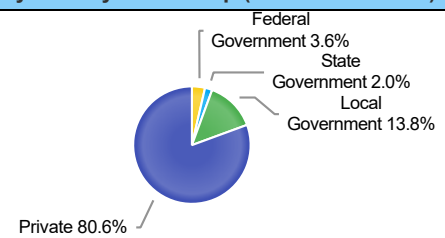
Average Weekly Wage (3rd Quarter 2020)

	Q3 2020	Q2 2020	Q3 2019	Quarterly Change	Yearly Change
WDA	\$810	\$819	\$780	\$-9	\$30
Texas	\$1,149	\$1,156	\$1,108	\$-7	\$41
US	\$1,173	\$1,188	\$1,092	\$-15	\$81

Employment by Size Class (3rd Quarter 2020)



Employment by Ownership (3rd Quarter 2020)



Employment by Industry (3rd Quarter 2020, Percent Change)

Industry	Employment	% of Total	% Quarterly Change	% Yearly Change
Natural Resources and Mining	1,163	1.1%	-2.0%	-8.5%
Construction	5,426	5.0%	1.3%	6.2%
Manufacturing	17,418	16.2%	1.6%	-6.1%
Trade, Transportation and Utilities	22,609	21.0%	4.0%	-1.8%
Information	472	0.4%	-0.6%	-21.2%
Financial Activities	3,986	3.7%	0.5%	-3.0%
Professional and Business Services	6,901	6.4%	3.1%	-3.4%
Education and Health Services	30,081	27.9%	1.6%	-1.6%
Leisure and Hospitality	10,528	9.8%	9.7%	-9.9%
Other Services	2,224	2.1%	2.6%	-8.3%
Public Administration	6,895	6.4%	1.1%	-0.7%

Employment by Industry (3rd Quarter 2020)

