

CITY OF MOUNT PLEASANT, TX
&
REGIONAL
SALES TAX & EMPLOYMENT
MONTHLY UPDATE

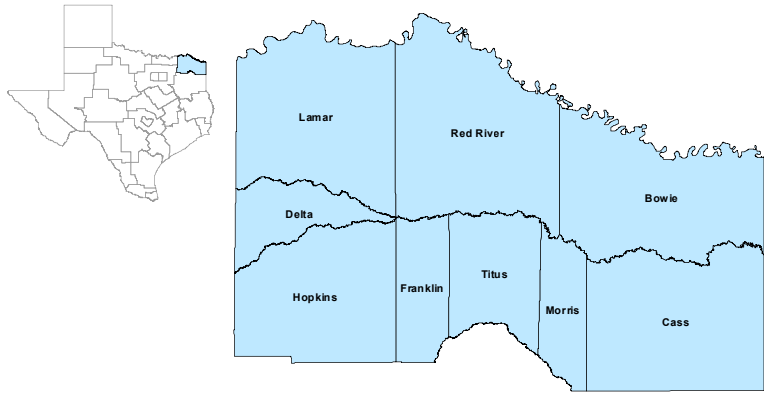


www.mpedc.org

903.572.6602

Updated on: 2/23/2021

North East Workforce Development Area



December 2020

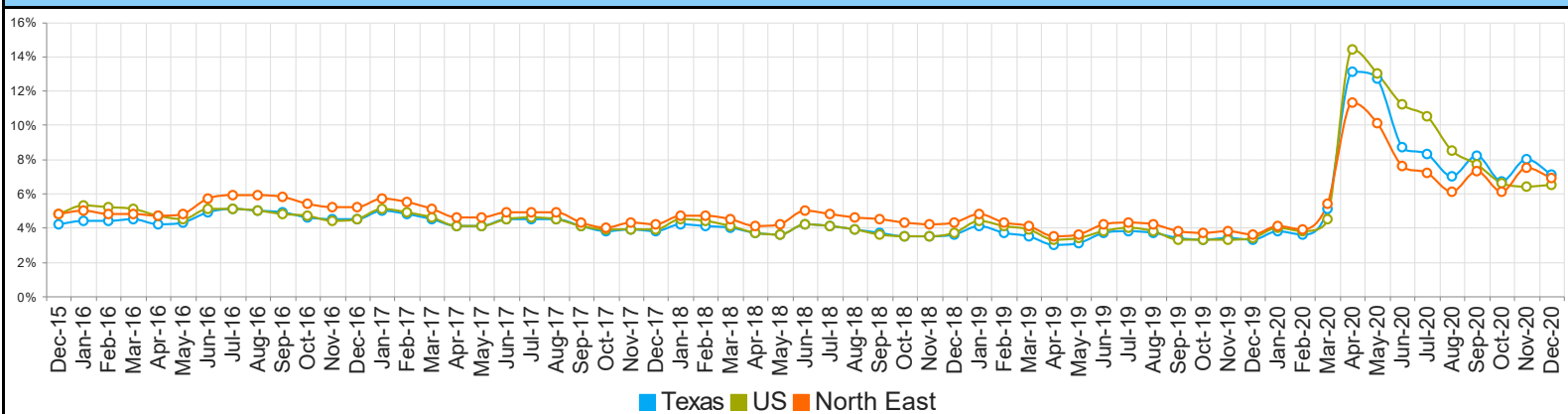
WDA Labor Force Statistics				
	Dec-20	Nov-20	Dec-19	Yearly Change
Civilian Labor Force	124,606	124,753	124,269	337
Employed	116,049	115,349	119,797	-3,748
Unemployed	8,557	9,404	4,472	4,085
Unemployment Rate	6.9%	7.5%	3.6%	3.3%

Texas Labor Force Statistics				
	Dec-20	Nov-20	Dec-19	Yearly Change
Civilian Labor Force	14,170,462	14,200,317	14,192,255	-21,793
Employed	13,163,725	13,070,145	13,722,119	-558,394
Unemployed	1,006,737	1,130,172	470,136	536,601
Unemployment Rate	7.1%	8.0%	3.3%	3.8%

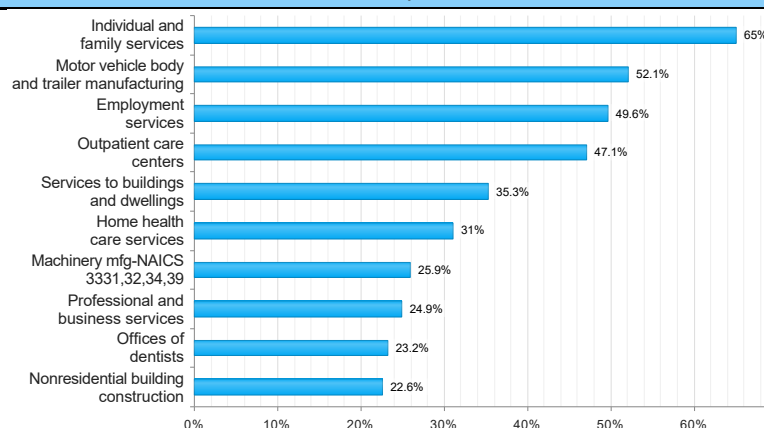
US Labor Force Statistics				
	Dec-20	Nov-20	Dec-19	Yearly Change
Civilian Labor Force	160,017,000	160,468,000	164,007,000	-3,990,000
Employed	149,613,000	150,203,000	158,504,000	-8,891,000
Unemployed	10,404,000	10,264,000	5,503,000	4,901,000
Unemployment Rate	6.5%	6.4%	3.4%	3.1%

Continued Claims for the Week of the 12th				
	Dec-20	Nov-20	Dec-19	Yearly Change
WDA	1,885	2,296	834	1,051
Texas	242,000	283,871	102,136	139,864

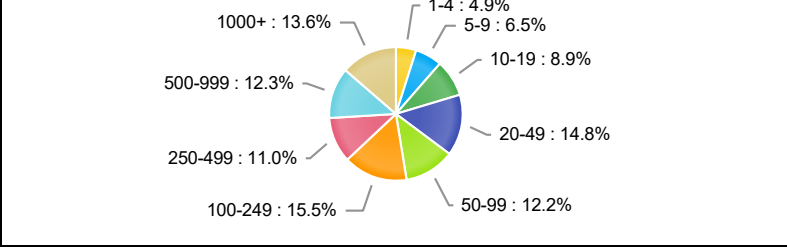
Historical Unemployment Rates



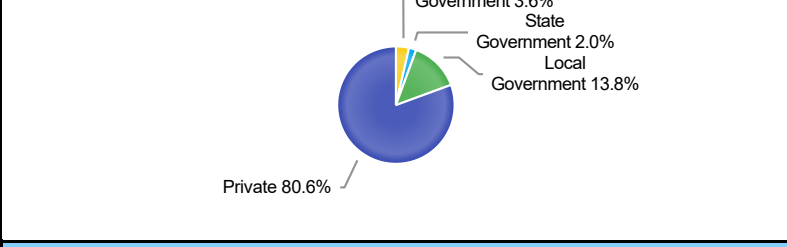
Projected Top Ten Fastest Growing Industries in WDA (% Growth 2018-2028)



Employment by Size Class (3rd Quarter 2020)



Employment by Ownership (3rd Quarter 2020)



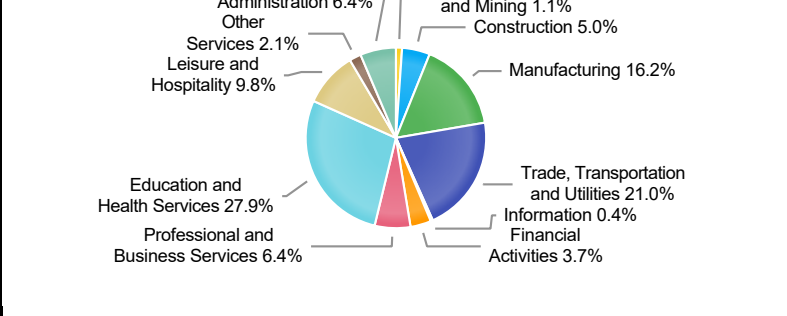
Average Weekly Wage (3rd Quarter 2020)

	Q3 2020	Q2 2020	Q3 2019	Quarterly Change	Yearly Change
WDA	\$810	\$819	\$780	\$-9	\$30
Texas	\$1,149	\$1,156	\$1,108	\$-7	\$41
US	N/A	\$1,188	\$1,093	N/A	N/A

Employment by Industry (3rd Quarter 2020, Percent Change)

Industry	Employment	% of Total	% Quarterly Change	% Yearly Change
Natural Resources and Mining	1,163	1.1%	-2.0%	-8.5%
Construction	5,426	5.0%	1.3%	6.2%
Manufacturing	17,418	16.2%	1.6%	-6.1%
Trade, Transportation and Utilities	22,609	21.0%	4.0%	-1.8%
Information	472	0.4%	-0.6%	-21.2%
Financial Activities	3,986	3.7%	0.5%	-3.0%
Professional and Business Services	6,901	6.4%	3.1%	-3.4%
Education and Health Services	30,081	27.9%	1.6%	-1.6%
Leisure and Hospitality	10,528	9.8%	9.7%	-9.9%
Other Services	2,224	2.1%	2.6%	-8.3%
Public Administration	6,895	6.4%	1.1%	-0.7%

Employment by Industry (3rd Quarter 2020)



*The average weekly wage for U.S. for the latest quarter is not available. It will be updated shortly.

CITY OF MOUNT PLEASANT, TX

City Sales and Use Tax Comparison Summary

City	Net Payment This Period	Comparable Payment Prior Year	% of Change	Payment YTD	Prior Year Payment YTD	% of Change
Mount Pleasant	\$708,162.66	\$646,021.44	9.61%	\$1,296,521.52	\$1,160,035.80	11.76%
Daingerfield	\$48,088.61	\$42,764.34	12.45%	\$85,407.15	\$77,526.82	10.16%
Mount Vernon	\$96,840.64	\$81,762.68	18.44%	\$182,983.39	\$147,020.99	24.46%
Paris	\$1,099,994.42	\$955,061.32	15.17%	\$1,899,963.45	\$1,632,448.62	16.38%
Pittsburg	\$116,327.71	\$98,493.34	18.10%	\$202,521.06	\$178,211.85	13.64%
Sulphur Springs	\$726,846.85	\$638,725.71	13.79%	\$1,286,601.05	\$1,146,505.86	12.21%

Mount Pleasant Monthly Employment, Labor, Unemployment, & Unemployment Rate

Month	Labor Force	Employment	Unemployment	Unemployment Rate
January 2020	13096	12505	591	4.5
February 2020	13192	12644	548	4.2
March 2020	13091	12320	771	5.9
April 2020	11647	10416	1231	10.6
May 2020	12006	10843	1163	9.7
June 2020	12558	11554	1004	8.0
July 2020	12650	11697	953	7.5
August 2020	13108	12280	828	6.3
September 2020	12914	11954	960	7.4
October 2020	12872	12078	794	6.2
November 2020	12937	11961	976	7.5
December 2020	12946(P)	12037(P)	909(P)	7.0(P)

P: Preliminary

TEXARKANA LAUS

Area	Area Type	December-20				November-20				December-19			
		Labor Force	Employment	Unemployment	Rate	Labor Force	Employment	Unemployment	Rate	Labor Force	Employment	Unemployment	Rate
Bowie	County	40,519	37,888	2,631	6.5	40,647	37,677	2,970	7.3	40,043	38,526	1,517	3.8
Cass	County	12,595	11,517	1,078	8.6	12,630	11,447	1,183	9.4	12,401	11,908	493	4.0
Delta	County	2,393	2,263	130	5.4	2,396	2,244	152	6.3	2,448	2,368	80	3.3
Franklin	County	4,590	4,300	290	6.3	4,584	4,273	311	6.8	4,608	4,460	148	3.2
Hopkins	County	17,232	16,319	913	5.3	17,203	16,206	997	5.8	17,530	17,032	498	2.8
Lamar	County	24,283	22,712	1,571	6.5	24,268	22,583	1,685	6.9	24,216	23,469	747	3.1
Morris	County	5,034	4,356	678	13.5	5,085	4,331	754	14.8	4,800	4,539	261	5.4
Red River	County	5,014	4,657	357	7.1	5,003	4,627	376	7.5	5,140	4,916	224	4.4
Titus	County	12,946	12,037	909	7.0	12,937	11,961	976	7.5	13,083	12,579	504	3.9
Paris	City	11,727	10,884	843	7.2	11,717	10,822	895	7.6	11,635	11,246	389	3.3
Texarkana	City	15,895	14,767	1,128	7.1	15,965	14,685	1,280	8.0	15,636	15,016	620	4.0

Mount Pleasant is in the Texarkana LAUS area which encloses 9 counties (Bowie, Cass, Delta, Franklin, Hopkins, Lamar, Morris, Red River, Titus) and 2 cities (Paris and Texarkana TX).

- LAUS (Local Area Unemployment Statistics)
- WDA (Workforce Development Area)
- <http://netxworkforce.org>

**SALES TAX ANALYSIS
2020-2021**

										Increase/	Increase/	
	Fiscal Year	Fiscal Year	Fiscal Year	Fiscal Year	Fiscal Year	Fiscal Year	Fiscal Year		Fiscal Year		Decrease	Decrease
Month	2013-2014	2014-2015	2015-2016	2016-2017	2017-2018	2018-2019	2019-2020	YTD	2020-2021	YTD	Monthly	YTD
October	466,718	390,863	427,503	468,023	452,936	469,460	527,009	527,009	563,685	563,685	6.95%	6.95%
November	399,865	452,369	483,487	537,694	503,890	538,937	566,266	1,093,275	694,632	1,258,317	22.66%	15.10%
December	358,657	415,535	449,230	450,032	436,514	486,070	528,108	1,621,383	554,464	1,812,781	4.99%	11.80%
January	361,388	408,005	449,471	452,418	479,294	479,869	514,014	2,135,397	588,357	2,401,138	14.46%	12.44%
February	494,252	511,382	592,475	563,845	566,236	577,354	646,021	2,781,418	708,163	3,109,301	9.61%	11.79%
March	348,463	367,865	380,986	427,259	461,022	458,329	488,500	3,269,918				
April	380,928	397,999	440,156	457,790	430,902	514,474	515,333	3,785,251				
May	465,468	495,205	546,057	576,330	557,748	598,418	591,418	4,376,669				
June	408,455	433,304	441,246	467,350	502,735	534,409	560,372	4,937,041				
July	428,111	416,684	457,958	467,298	568,397	529,547	555,480	5,492,521				
August	464,441	511,572	534,430	517,103	598,256	562,637	656,930	6,149,451				
September	424,622	434,331	439,577	464,046	480,972	518,839	555,026	6,704,177				
	5,001,366	5,235,113	5,642,575	5,849,188	6,038,902	6,268,343	6,704,177		3,109,301			

Sales Tax Analysis

