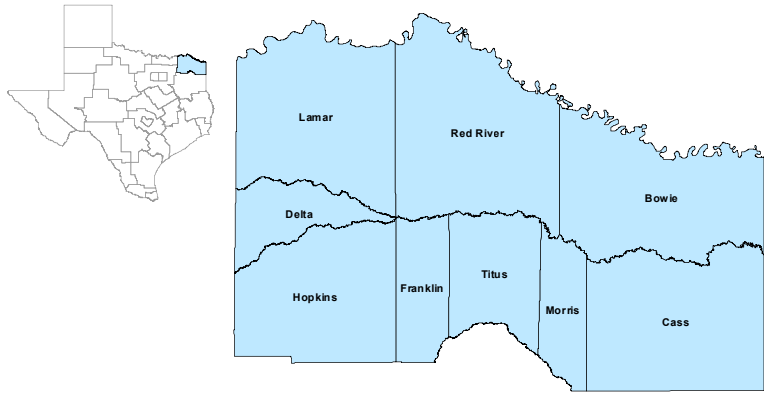


North East Workforce Development Area



December 2020

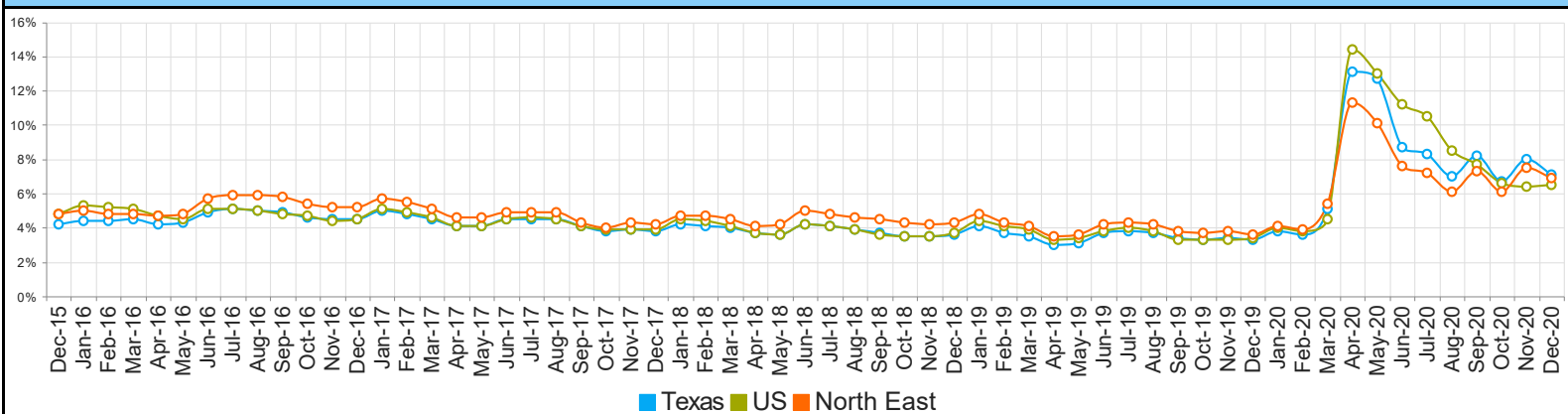
WDA Labor Force Statistics				
	Dec-20	Nov-20	Dec-19	Yearly Change
Civilian Labor Force	124,606	124,753	124,269	337
Employed	116,049	115,349	119,797	-3,748
Unemployed	8,557	9,404	4,472	4,085
Unemployment Rate	6.9%	7.5%	3.6%	3.3%

Texas Labor Force Statistics				
	Dec-20	Nov-20	Dec-19	Yearly Change
Civilian Labor Force	14,170,462	14,200,317	14,192,255	-21,793
Employed	13,163,725	13,070,145	13,722,119	-558,394
Unemployed	1,006,737	1,130,172	470,136	536,601
Unemployment Rate	7.1%	8.0%	3.3%	3.8%

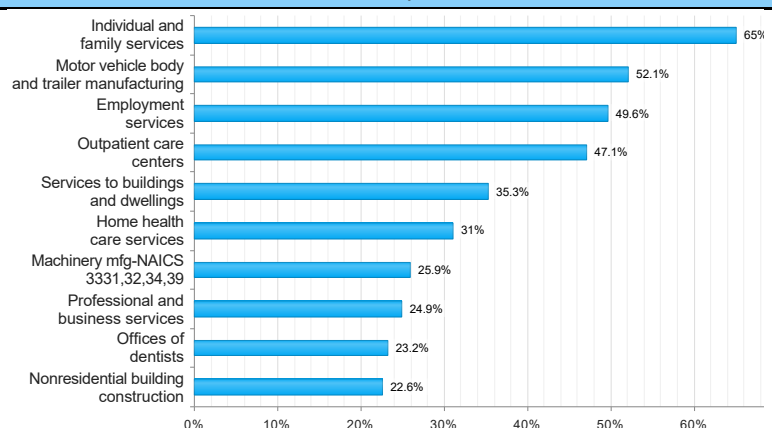
US Labor Force Statistics				
	Dec-20	Nov-20	Dec-19	Yearly Change
Civilian Labor Force	160,017,000	160,468,000	164,007,000	-3,990,000
Employed	149,613,000	150,203,000	158,504,000	-8,891,000
Unemployed	10,404,000	10,264,000	5,503,000	4,901,000
Unemployment Rate	6.5%	6.4%	3.4%	3.1%

Continued Claims for the Week of the 12th				
	Dec-20	Nov-20	Dec-19	Yearly Change
WDA	1,885	2,296	834	1,051
Texas	242,000	283,871	102,136	139,864

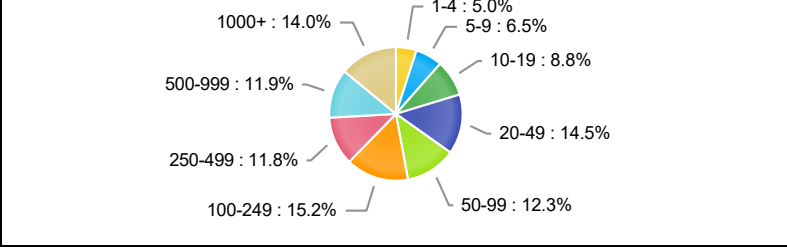
Historical Unemployment Rates



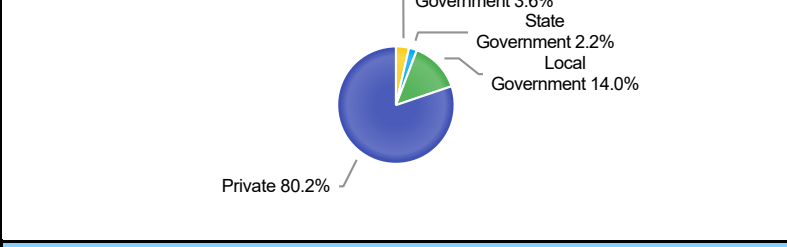
Projected Top Ten Fastest Growing Industries in WDA (% Growth 2018-2028)



Employment by Size Class (2nd Quarter 2020)



Employment by Ownership (2nd Quarter 2020)



Average Weekly Wage (2nd Quarter 2020)

	Q2 2020	Q1 2020	Q2 2019	Quarterly Change	Yearly Change
WDA	\$819	\$790	\$777	\$29	\$42
Texas	\$1,156	\$1,231	\$1,101	-\$75	\$55
US	\$1,188	\$1,222	\$1,094	-\$34	\$94

Employment by Industry (2nd Quarter 2020, Percent Change)

Industry	Employment	% of Total	% Quarterly Change	% Yearly Change
Natural Resources and Mining	1,182	1.1%	-0.3%	-6.9%
Construction	5,330	5.1%	4.3%	1.9%
Manufacturing	17,144	16.4%	-8.3%	-6.5%
Trade, Transportation and Utilities	21,742	20.8%	-3.3%	-6.3%
Information	480	0.5%	-18.6%	-21.3%
Financial Activities	3,963	3.8%	-1.2%	-4.6%
Professional and Business Services	6,632	6.3%	-3.8%	-1.9%
Education and Health Services	29,628	28.3%	-6.8%	-5.0%
Leisure and Hospitality	9,552	9.1%	-14.2%	-17.7%
Other Services	2,163	2.1%	-6.9%	-10.5%
Public Administration	6,771	6.5%	-1.3%	-2.7%

Employment by Industry (2nd Quarter 2020)

