

CITY OF MOUNT PLEASANT, TX
&
REGIONAL
SALES TAX & EMPLOYMENT
MONTHLY UPDATE

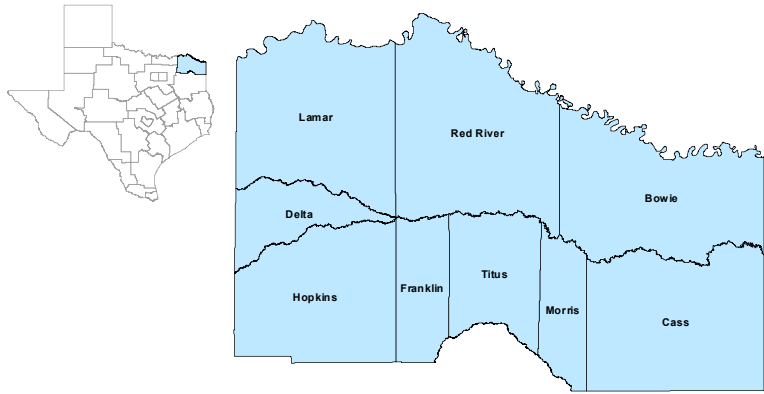


www.mpedc.org

903.572.6602

Updated on: 10/21/2020

North East Workforce Development Area



September 2020

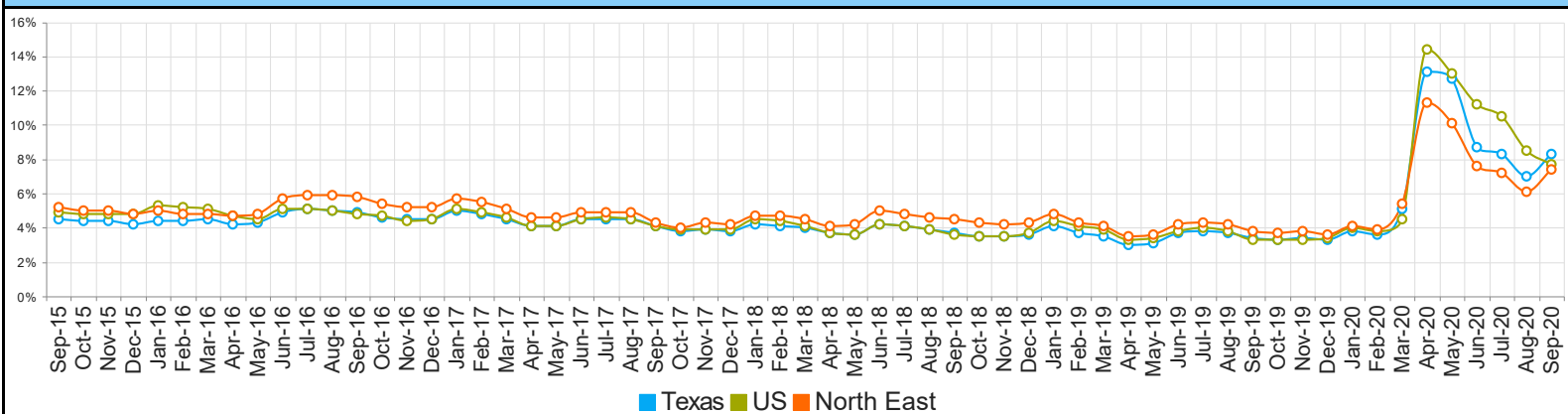
WDA Labor Force Statistics				
	Sep-20	Aug-20	Sep-19	Yearly Change
Civilian Labor Force	124,497	125,512	124,845	-348
Employed	115,279	117,879	120,080	-4,801
Unemployed	9,218	7,633	4,765	4,453
Unemployment Rate	7.4%	6.1%	3.8%	3.6%

Texas Labor Force Statistics				
	Sep-20	Aug-20	Sep-19	Yearly Change
Civilian Labor Force	14,208,368	14,330,374	14,111,297	97,071
Employed	13,030,775	13,330,115	13,628,468	-597,693
Unemployed	1,177,593	1,000,259	482,829	694,764
Unemployment Rate	8.3%	7.0%	3.4%	4.9%

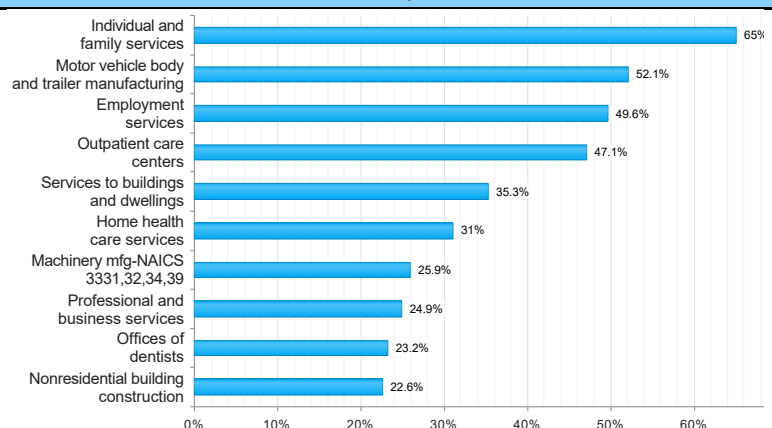
US Labor Force Statistics				
	Sep-20	Aug-20	Sep-19	Yearly Change
Civilian Labor Force	160,073,000	160,966,000	163,943,000	-3,870,000
Employed	147,796,000	147,224,000	158,478,000	-10,682,000
Unemployed	12,277,000	13,742,000	5,465,000	6,812,000
Unemployment Rate	7.7%	8.5%	3.3%	4.4%

Continued Claims for the Week of the 12th				
	Sep-20	Aug-20	Sep-19	Yearly Change
WDA	4,379	5,425	812	3,567
Texas	614,742	785,885	90,289	524,453

Historical Unemployment Rates

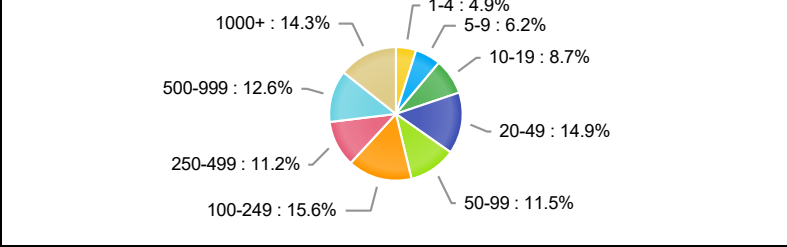


Projected Top Ten Fastest Growing Industries in WDA (% Growth 2018-2028)

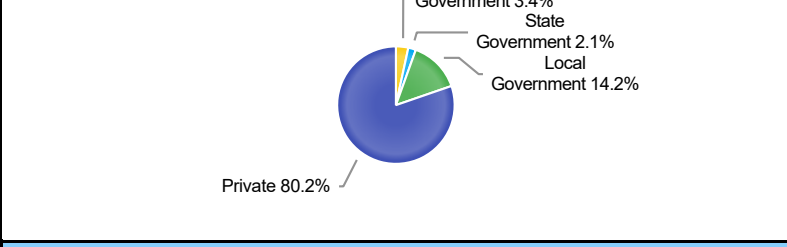


Average Weekly Wage (1st Quarter 2020)					
	Q1 2020	Q4 2019	Q1 2019	Quarterly Change	Yearly Change
WDA	\$790	\$825	\$775	-\$35	\$15
Texas	\$1,232	\$1,187	\$1,204	\$45	\$28
US	\$1,222	\$1,185	\$1,183	\$37	\$39

Employment by Size Class (1st Quarter 2020)



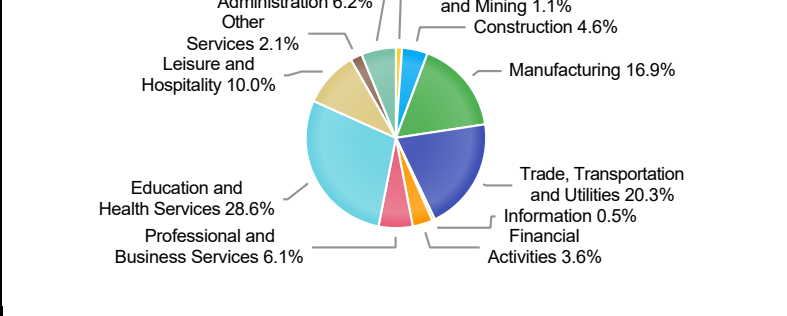
Employment by Ownership (1st Quarter 2020)



Employment by Industry (1st Quarter 2020, Percent Change)

Industry	Employment	% of Total	% Quarterly Change	% Yearly Change
Natural Resources and Mining	1,185	1.1%	-5.0%	-5.7%
Construction	5,097	4.6%	-1.2%	2.6%
Manufacturing	18,709	16.9%	1.1%	2.9%
Trade, Transportation and Utilities	22,480	20.3%	-4.3%	-1.8%
Information	593	0.5%	-2.6%	1.0%
Financial Activities	3,998	3.6%	-1.8%	-3.2%
Professional and Business Services	6,821	6.1%	-2.2%	1.2%
Education and Health Services	31,782	28.6%	0.0%	2.5%
Leisure and Hospitality	11,142	10.0%	-2.8%	1.8%
Other Services	2,361	2.1%	0.9%	1.2%
Public Administration	6,839	6.2%	-1.0%	-2.4%

Employment by Industry (1st Quarter 2020)



CITY OF MOUNT PLEASANT, TX

City Sales and Use Tax Comparison Summary

City	Net Payment This Period	Comparable Payment Prior Year	% of Change	Payment YTD	Prior Year Payment YTD	% of Change
Mount Pleasant	\$563,685.17	\$527,009.09	6.95%	\$5,647,194.94	\$5,300,886.56	6.53%
Daingerfield	\$36,962.28	\$31,329.20	17.98%	\$398,413.74	\$357,783.54	11.35%
Mount Vernon	\$85,736.97	\$64,436.05	33.05%	\$758,794.04	\$683,398.32	11.03%
Paris	\$820,218.44	\$707,265.18	15.97%	\$7,937,966.58	\$7,296,734.26	8.78%
Pittsburg	\$89,363.89	\$75,944.93	17.66%	\$963,542.62	\$844,959.56	14.03%
Sulphur Springs	\$552,852.79	\$544,558.26	1.52%	\$5,725,289.54	\$5,557,711.35	3.01%

Mount Pleasant Monthly Employment, Labor, Unemployment, & Unemployment Rate

Month	Labor Force	Employment	Unemployment	Unemployment Rate
January 2020	13096	12505	591	4.5
February 2020	13192	12644	548	4.2
March 2020	131091	12320	771	5.9
April 2020	11647	10416	1231	10.6
May 2020	12006	10843	1163	9.7
June 2020	12558	11554	1004	8.0
July 2020	12650	11697	953	7.5
August 2020	13116(P)	12286(P)	830(P)	6.3(P)
September 2019	12730	12227	503	4.0
October 2019	12615	12119	496	3.9
November 2019	12620	12111	509	4.0
December 2019	13083	12579	504	3.9

P: Preliminary

TEXARKANA LAUS

Area	Area Type	September-20				August-20				September-19			
		Labor Force	Employment	Unemployment	Rate	Labor Force	Employment	Unemployment	Rate	Labor Force	Employment	Unemployment	Rate
Bowie	County	40,773	37,745	3,028	7.4	40,803	38,269	2,534	6.2	40,095	38,384	1,711	4.3
Cass	County	12,538	11,437	1,101	8.8	12,641	11,723	918	7.3	12,435	11,910	525	4.2
Delta	County	2,379	2,242	137	5.8	2,418	2,303	115	4.8	2,456	2,371	85	3.5
Franklin	County	4,554	4,277	277	6.1	4,640	4,408	232	5.0	4,657	4,496	161	3.5
Hopkins	County	17,180	16,190	990	5.8	17,451	16,656	795	4.6	17,661	17,153	508	2.9
Lamar	County	24,162	22,502	1,660	6.9	24,448	23,064	1,384	5.7	24,371	23,581	790	3.2
Morris	County	5,016	4,315	701	14.0	4,980	4,424	556	11.2	4,853	4,607	246	5.1
Red River	County	4,976	4,622	354	7.1	5,023	4,752	271	5.4	5,148	4,919	229	4.4
Titus	County	12,919	11,949	970	7.5	13,108	12,280	828	6.3	13,169	12,659	510	3.9
Paris	City	11,706	10,783	923	7.9	11,832	11,052	780	6.6	11,719	11,300	419	3.6
Texarkana	City	16,021	14,712	1,309	8.2	16,038	14,916	1,122	7.0	15,686	14,961	725	4.6

Mount Pleasant is in the Texarkana LAUS area which encloses 9 counties (Bowie, Cass, Delta, Franklin, Hopkins, Lamar, Morris, Red River, Titus) and 2 cities (Paris and Texarkana TX).

- LAUS (Local Area Unemployment Statistics)
- WDA (Workforce Development Area)
- <http://netxworkforce.org>

**SALES TAX ANALYSIS
2020-2021**

											Increase/	Increase/
	Fiscal Year	Fiscal Year	Fiscal Year	Fiscal Year	Fiscal Year	Fiscal Year	Fiscal Year		Fiscal Year		Decrease	Decrease
Month	2013-2014	2014-2015	2015-2016	2016-2017	2017-2018	2018-2019	2019-2020	YTD	2020-2021	YTD	Monthly	YTD
October	466,718	390,863	427,503	468,023	452,936	469,460	527,009	527,009	563,685	563,685	6.95%	6.95%
November	399,865	452,369	483,487	537,694	503,890	538,937	566,266	1,093,275				
December	358,657	415,535	449,230	450,032	436,514	486,070	528,108	1,621,383				
January	361,388	408,005	449,471	452,418	479,294	479,869	514,014	2,135,397				
February	494,252	511,382	592,475	563,845	566,236	577,354	646,021	2,781,418				
March	348,463	367,865	380,986	427,259	461,022	458,329	488,500	3,269,918				
April	380,928	397,999	440,156	457,790	430,902	514,474	515,333	3,785,251				
May	465,468	495,205	546,057	576,330	557,748	598,418	591,418	4,376,669				
June	408,455	433,304	441,246	467,350	502,735	534,409	560,372	4,937,041				
July	428,111	416,684	457,958	467,298	568,397	529,547	555,480	5,492,521				
August	464,441	511,572	534,430	517,103	598,256	562,637	656,930	6,149,451				
September	424,622	434,331	439,577	464,046	480,972	518,839	555,026	6,704,177				
	5,001,366	5,235,113	5,642,575	5,849,188	6,038,902	6,268,343	6,704,177		563,685			

Sales Tax Analysis

