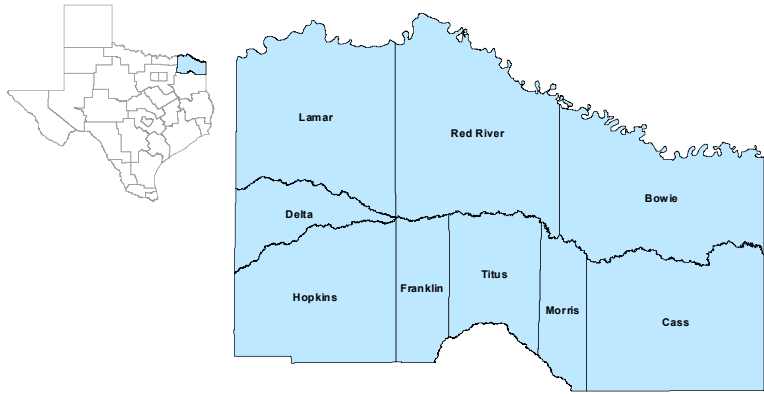


## North East Workforce Development Area



## December 2019

WDA Labor Force Statistics				
	Dec-19	Nov-19	Dec-18	Yearly Change
Civilian Labor Force	122,805	123,338	123,170	-365
Employed	118,302	118,662	117,897	405
Unemployed	4,503	4,676	5,273	-770
Unemployment Rate	3.7%	3.8%	4.3%	-0.6%

Texas Labor Force Statistics				
	Dec-19	Nov-19	Dec-18	Yearly Change
Civilian Labor Force	14,228,471	14,264,714	13,975,415	253,056
Employed	13,758,042	13,787,798	13,473,628	284,414
Unemployed	470,429	476,916	501,787	-31,358
Unemployment Rate	3.3%	3.3%	3.6%	-0.3%

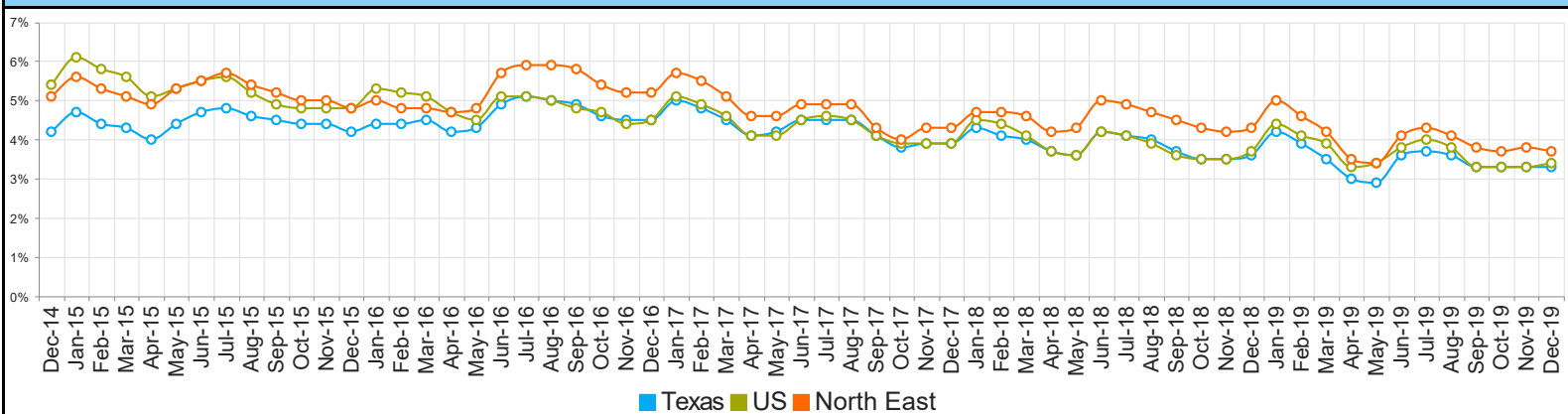
  

US Labor Force Statistics				
	Dec-19	Nov-19	Dec-18	Yearly Change
Civilian Labor Force	164,007,000	164,386,000	162,510,000	1,497,000
Employed	158,504,000	158,945,000	156,481,000	2,023,000
Unemployed	5,503,000	5,441,000	6,029,000	-526,000
Unemployment Rate	3.4%	3.3%	3.7%	-0.3%

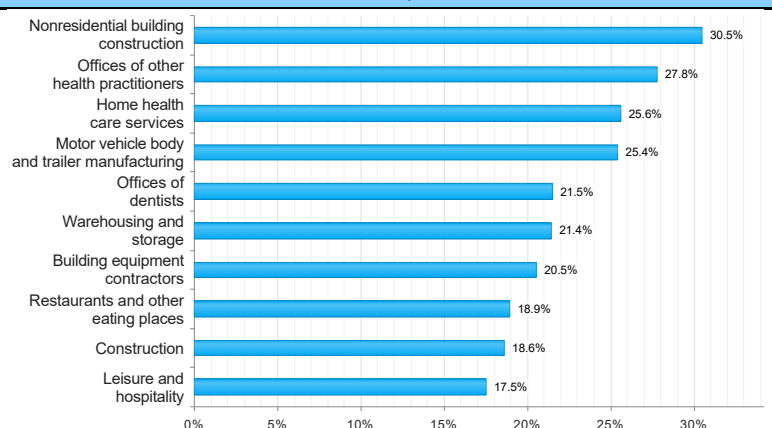
  

Continued Claims for the Week of the 12th				
	Dec-19	Nov-19	Dec-18	Yearly Change
WDA	830	810	850	-20
Texas	101,789	93,700	89,560	12,229

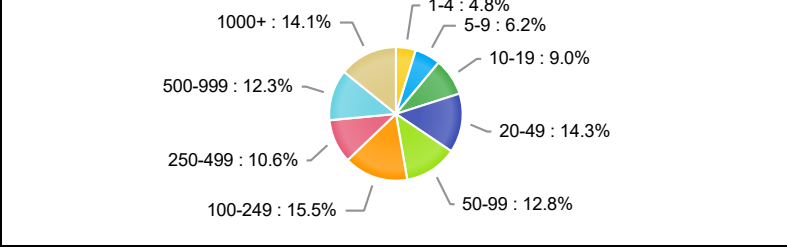
## Historical Unemployment Rates



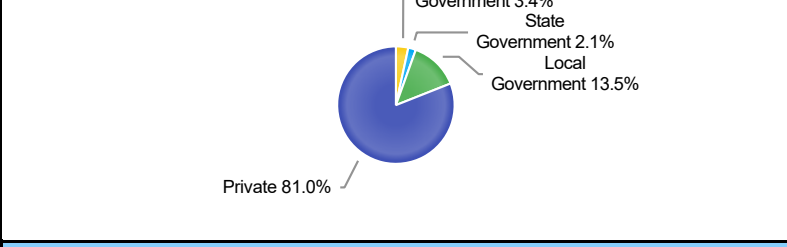
## Projected Top Ten Fastest Growing Industries in WDA (% Growth 2016-2026)



## Employment by Size Class (3rd Quarter 2019)



## Employment by Ownership (3rd Quarter 2019)



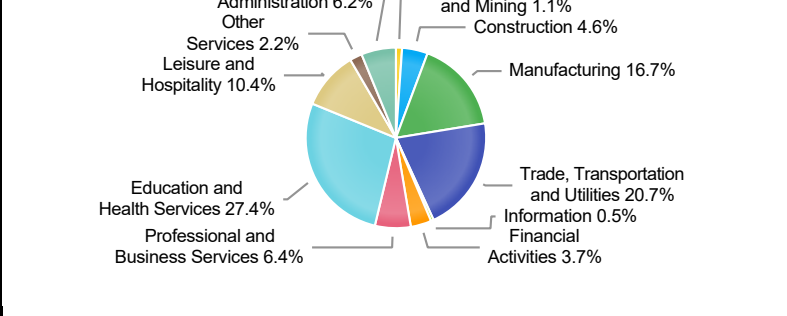
### Average Weekly Wage (3rd Quarter 2019)

	Q3 2019	Q2 2019	Q3 2018	Quarterly Change	Yearly Change
WDA	\$781	\$777	\$759	\$4	\$22
Texas	\$1,109	\$1,101	\$1,065	\$8	\$44
US	N/A	\$1,095	\$1,054	N/A	N/A

## Employment by Industry (3rd Quarter 2019, Percent Change)

Industry	Employment	% of Total	% Quarterly Change	% Yearly Change
Natural Resources and Mining	1,262	1.1%	-0.6%	-3.5%
Construction	5,131	4.6%	-1.9%	2.0%
Manufacturing	18,555	16.7%	1.2%	4.6%
Trade, Transportation and Utilities	23,076	20.7%	-0.6%	1.1%
Information	599	0.5%	-1.8%	-1.5%
Financial Activities	4,107	3.7%	-1.2%	-2.7%
Professional and Business Services	7,125	6.4%	5.4%	6.1%
Education and Health Services	30,579	27.4%	-2.0%	1.8%
Leisure and Hospitality	11,630	10.4%	0.2%	4.0%
Other Services	2,418	2.2%	0.0%	1.9%
Public Administration	6,946	6.2%	-0.2%	-0.4%

## Employment by Industry (3rd Quarter 2019)



\*The average weekly wage for U.S. for the latest quarter is not available. It will be updated shortly.