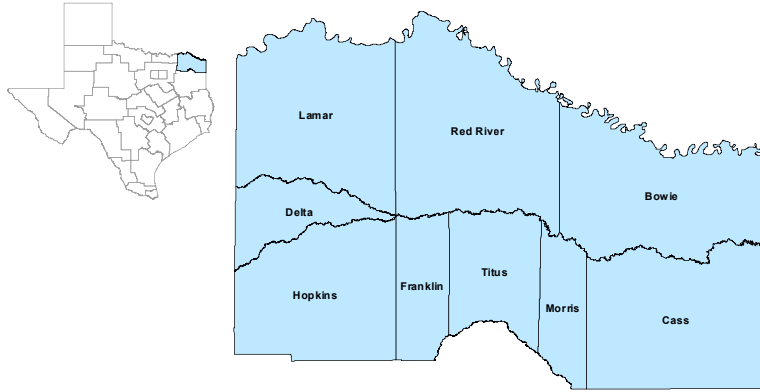


North East Workforce Development Area



November 2019

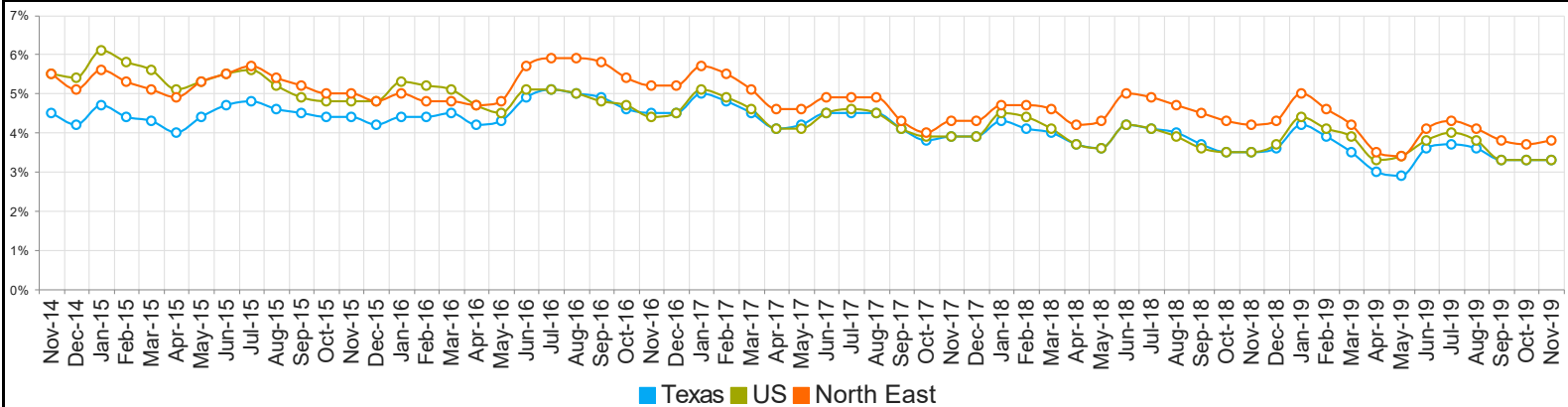
WDA Labor Force Statistics				
	Nov-19	Oct-19	Nov-18	Yearly Change
Civilian Labor Force	123,371	123,340	123,321	50
Employed	118,694	118,718	118,095	599
Unemployed	4,677	4,622	5,226	-549
Unemployment Rate	3.8%	3.7%	4.2%	-0.4%

Texas Labor Force Statistics				
	Nov-19	Oct-19	Nov-18	Yearly Change
Civilian Labor Force	14,265,562	14,190,783	13,961,940	303,622
Employed	13,788,541	13,723,103	13,475,980	312,561
Unemployed	477,021	467,680	485,960	-8,939
Unemployment Rate	3.3%	3.3%	3.5%	-0.2%

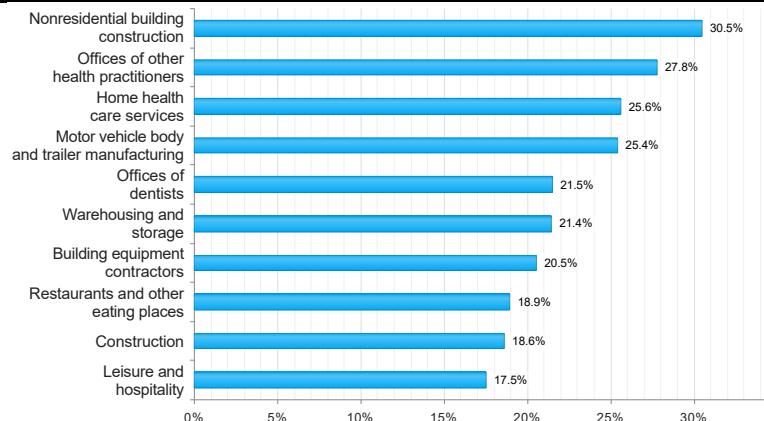
US Labor Force Statistics				
	Nov-19	Oct-19	Nov-18	Yearly Change
Civilian Labor Force	164,386,000	164,576,000	162,665,000	1,721,000
Employed	158,945,000	159,067,000	157,015,000	1,930,000
Unemployed	5,441,000	5,510,000	5,650,000	-209,000
Unemployment Rate	3.3%	3.3%	3.5%	-0.2%

Continued Claims for the Week of the 12th				
	Nov-19	Oct-19	Nov-18	Yearly Change
WDA	809	803	888	-79
Texas	93,207	89,985	83,685	9,522

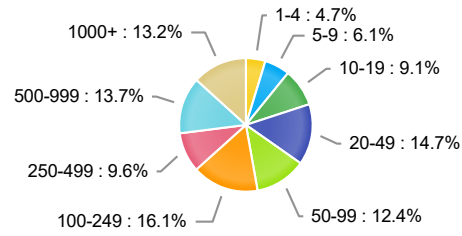
Historical Unemployment Rates



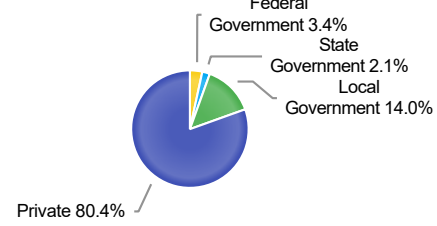
Projected Top Ten Fastest Growing Industries in WDA (% Growth 2016-2026)



Employment by Size Class (2nd Quarter 2019)



Employment by Ownership (2nd Quarter 2019)



Average Weekly Wage (2nd Quarter 2019)

	Q2 2019	Q1 2019	Q2 2018	Quarterly Change	Yearly Change
WDA	\$777	\$775	\$763	\$2	\$14
Texas	\$1,102	\$1,204	\$1,062	-\$102	\$40
US	\$1,095	\$1,184	\$1,055	-\$89	\$40

Employment by Industry (2nd Quarter 2019, Percent Change)

Industry	Employment	% of Total	% Quarterly Change	% Yearly Change
Natural Resources and Mining	1,266	1.1%	0.7%	-4.0%
Construction	5,232	4.7%	5.3%	7.7%
Manufacturing	18,342	16.4%	0.9%	3.0%
Trade, Transportation and Utilities	23,188	20.7%	1.4%	0.7%
Information	610	0.5%	3.9%	-3.2%
Financial Activities	4,158	3.7%	0.7%	-3.0%
Professional and Business Services	6,789	6.1%	0.8%	4.1%
Education and Health Services	31,238	27.9%	0.8%	1.9%
Leisure and Hospitality	11,583	10.4%	5.8%	3.7%
Other Services	2,416	2.2%	3.6%	-1.1%
Public Administration	6,967	6.2%	-0.5%	-1.3%

Employment by Industry (2nd Quarter 2019)

