

CITY OF MOUNT PLEASANT, TX  
&  
REGIONAL  
SALES TAX & EMPLOYMENT  
MONTHLY UPDATE



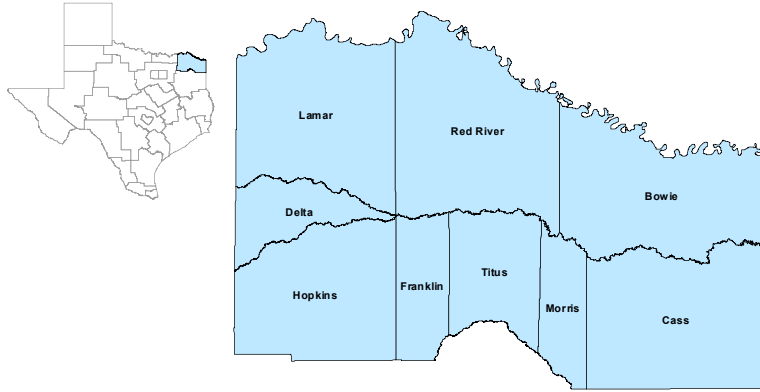
[www.mpedc.org](http://www.mpedc.org)

903.572.6602

Updated on: 05/22/2020

## North East Workforce Development Area

March 2020



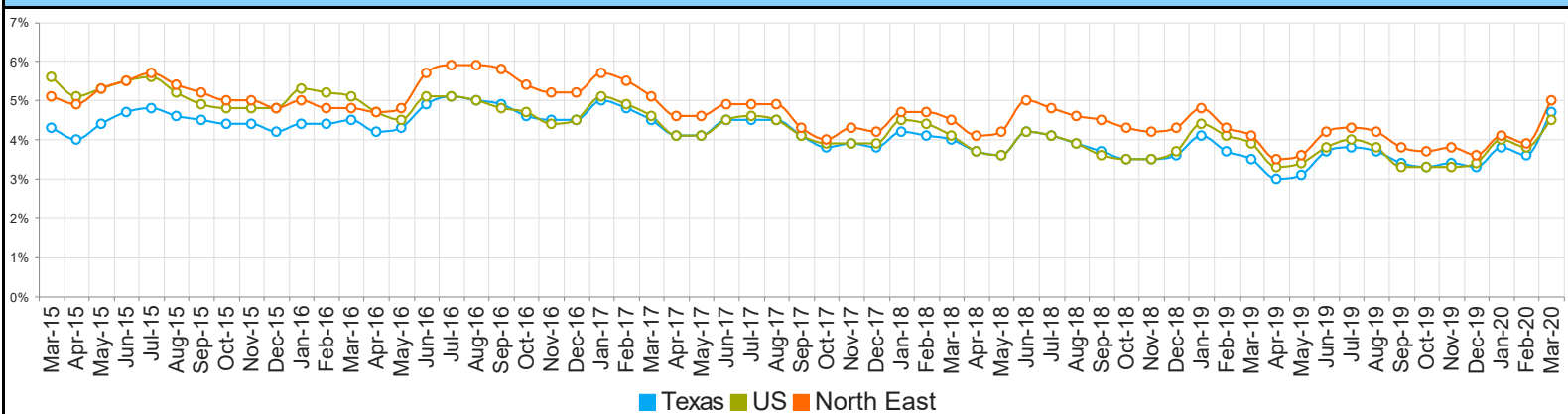
WDA Labor Force Statistics				
	Mar-20	Feb-20	Mar-19	Yearly Change
Civilian Labor Force	124,358	125,205	123,937	421
Employed	118,086	120,268	118,872	-786
Unemployed	6,272	4,937	5,065	1,207
Unemployment Rate	5.0%	3.9%	4.1%	0.9%

Texas Labor Force Statistics				
	Mar-20	Feb-20	Mar-19	Yearly Change
Civilian Labor Force	14,075,576	14,283,348	13,976,212	99,364
Employed	13,409,275	13,775,210	13,486,329	-77,054
Unemployed	666,301	508,138	489,883	176,418
Unemployment Rate	4.7%	3.6%	3.5%	1.2%

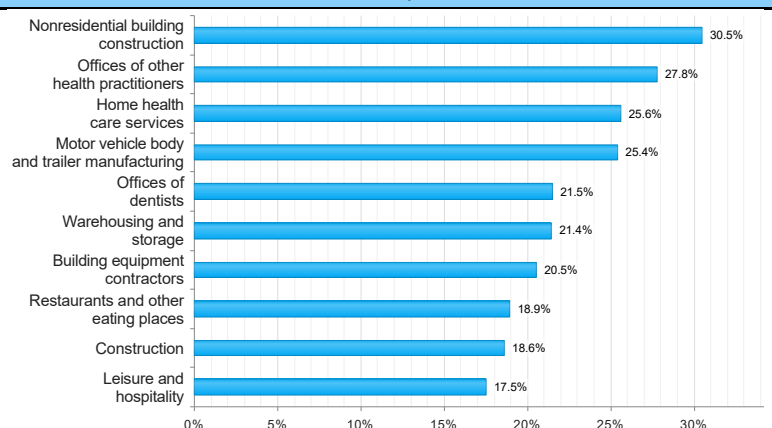
US Labor Force Statistics				
	Mar-20	Feb-20	Mar-19	Yearly Change
Civilian Labor Force	162,537,000	164,235,000	162,823,000	-286,000
Employed	155,167,000	158,017,000	156,441,000	-1,274,000
Unemployed	7,370,000	6,218,000	6,382,000	988,000
Unemployment Rate	4.5%	3.8%	3.9%	0.6%

Continued Claims for the Week of the 12th				
	Mar-20	Feb-20	Mar-19	Yearly Change
WDA	870	945	935	-65
Texas	108,000	104,801	95,617	12,383

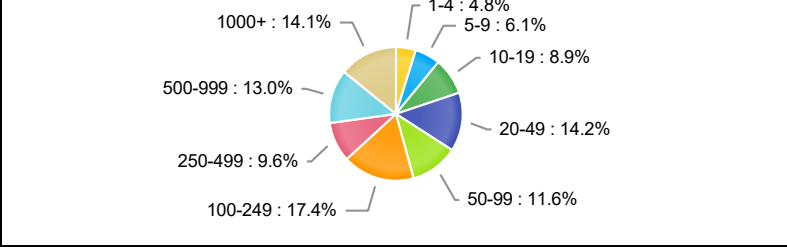
## Historical Unemployment Rates



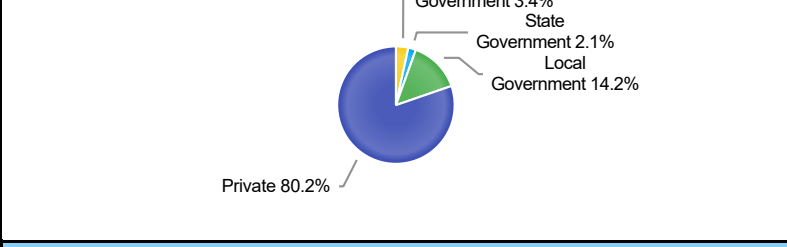
## Projected Top Ten Fastest Growing Industries in WDA (% Growth 2016-2026)



## Employment by Size Class (4th Quarter 2019)



## Employment by Ownership (4th Quarter 2019)

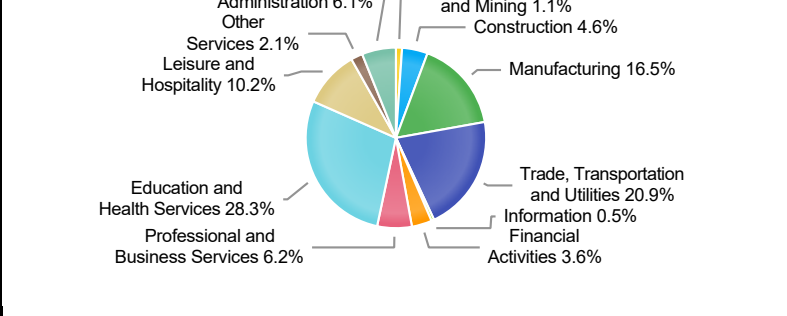


	Q4 2019	Q3 2019	Q4 2018	Quarterly Change	Yearly Change
WDA	\$825	\$780	\$804	\$45	\$21
Texas	\$1,187	\$1,108	\$1,148	\$79	\$39
US	N/A	\$1,093	\$1,144	N/A	N/A

## Employment by Industry (4th Quarter 2019, Percent Change)

Industry	Employment	% of Total	% Quarterly Change	% Yearly Change
Natural Resources and Mining	1,247	1.1%	-1.9%	-6.6%
Construction	5,151	4.6%	0.9%	2.7%
Manufacturing	18,505	16.5%	-0.2%	4.1%
Trade, Transportation and Utilities	23,484	20.9%	2.0%	1.6%
Information	607	0.5%	1.3%	5.2%
Financial Activities	4,070	3.6%	-0.9%	-3.0%
Professional and Business Services	6,967	6.2%	-2.5%	4.7%
Education and Health Services	31,774	28.3%	3.9%	2.9%
Leisure and Hospitality	11,425	10.2%	-2.3%	4.0%
Other Services	2,340	2.1%	-3.5%	0.7%
Public Administration	6,904	6.1%	-0.6%	-1.2%

## Employment by Industry (4th Quarter 2019)



\*The average weekly wage for U.S. for the latest quarter is not available. It will be updated shortly.

# CITY OF MOUNT PLEASANT, TX

## City Sales and Use Tax Comparison Summary

City	Net Payment This Period	Comparable Payment Prior Year	% of Change	Payment YTD	Prior Year Payment YTD	% of Change
Mount Pleasant	\$591,833.06	\$598,417.90	-1.10%	\$2,755,701.71	\$2,628,445.11	4.84%
Daingerfield	\$41,293.43	\$35,680.32	15.73%	\$184,649.00	\$176,176.24	4.80%
Mount Vernon	\$78,152.89	\$69,787.06	11.98%	\$340,434.68	\$341,091.63	-0.19%
Paris	\$830,134.70	\$794,748.94	4.45%	\$3,787,076.43	\$3,650,672.53	3.73%
Pittsburg	\$100,552.62	\$94,392.20	6.52%	\$499,462.53	\$419,370.65	19.09%
Sulphur Springs	\$548,950.20	\$601,368.15	-8.71%	\$2,699,546.38	\$2,722,776.95	-0.85%

## Mount Pleasant Monthly Employment, Labor, Unemployment, & Unemployment Rate

Month	Labor Force	Employment	Unemployment	Unemployment Rate
January 2020	13096	12505	591	4.5
February 2020	13192	12644	548	4.2
March 2020	13109(P)	12397(P)	712(P)	5.4(P)
April 2019	12815	12353	462	3.6
May 2019	12722	12263	459	3.6
June 2019	12737	12171	566	4.4
July 2019	12730	12135	595	4.7
August 2019	12622	12073	549	4.3
September 2019	12730	12227	503	4.0
October 2019	12615	12119	496	3.9
November 2019	12620	12111	509	4.0
December 2019	13083	12579	504	3.9

P: Preliminary

**TEXARKANA LAUS**

Area	Area Type	April-20				March -20				April-19			
		Labor Force	Employment	Unemployment	Rate	Labor Force	Employment	Unemployment	Rate	Labor Force	Employment	Unemployment	Rate
Bowie	County	36,181	31,044	5,137	14.2	39,607	37,308	2,299	5.8	39,760	38,238	1,522	3.8
Cass	County	11,223	9,862	1,361	12.1	12,528	11,733	795	6.3	12,409	11,949	460	3.7
Delta	County	2,143	1,955	188	8.8	2,440	2,319	121	5.0	2,431	2,360	71	2.9
Franklin	County	4,084	3,726	358	8.8	4,637	4,416	221	4.8	4,644	4,499	145	3.1
Hopkins	County	15,413	14,112	1,301	8.4	17,508	16,724	784	4.5	17,404	16,940	464	2.7
Lamar	County	21,929	19,614	2,315	10.6	24,216	23,133	1,083	4.5	23,910	23,194	716	3.0
Morris	County	4,377	3,767	610	13.9	4,830	4,480	350	7.2	4,781	4,562	219	4.6
Red River	County	4,424	4,026	398	9.0	5,119	4,793	326	6.4	5,097	4,895	202	4.0
Titus	County	11,639	10,394	1,245	10.7	13,091	12,320	771	5.9	12,887	12,426	461	3.6
Paris	City	10,613	9,399	1,214	11.4	11,617	11,085	532	4.6	11,501	11,114	387	3.4
Texarkana	City	14,393	12,100	2,293	15.9	15,406	14,541	865	5.6	15,498	14,904	594	3.8

Mount Pleasant is in the Texarkana LAUS area which encloses 9 counties (Bowie, Cass, Delta, Franklin, Hopkins, Lamar, Morris, Red River, Titus) and 2 cities (Paris and Texarkana TX).

- LAUS (Local Area Unemployment Statistics)
- WDA (Workforce Development Area)
- <http://netxworkforce.org>

**SALES TAX ANALYSIS**  
2019-2020

												Increase/ Decrease	Increase/ Decrease
Month	Fiscal Year	Fiscal Year	Fiscal Year	Fiscal Year	Fiscal Year	Fiscal Year	Fiscal Year	Fiscal Year		Fiscal Year		Monthly	YTD
	2011-2012	2012-2013	2013-2014	2014-2015	2015-2016	2016-2017	2017-2018	2018-2019	YTD	2019-2020	YTD		
October	330,006	356,803	466,718	390,863	427,503	468,023	452,936	469,460	469,460	527,009	527,009	12.25%	12.26%
November	393,294	415,027	399,865	452,369	483,487	537,694	503,890	538,937	1,008,397	566,266	1,093,275	5.07%	8.42%
December	331,399	301,351	358,657	415,535	449,230	450,032	436,514	486,070	1,494,467	528,108	1,621,383	8.64%	8.49%
January	343,489	372,476	361,388	408,005	449,471	452,418	479,294	479,869	1,974,336	514,014	2,135,397	7.11%	8.16%
February	458,539	493,674	494,252	511,382	592,475	563,845	566,236	577,354	2,551,690	646,021	2,781,418	11.89%	9.00%
March	304,586	338,086	348,463	367,865	380,986	427,259	461,022	458,329	3,010,019	488,500	3,269,918	6.58%	8.63%
April	344,144	400,579	380,928	397,999	440,156	457,790	430,902	514,474	3,524,493	515,333	3,785,251	0.16%	7.40%
May	465,515	455,095	465,468	495,205	546,057	576,330	557,748	598,418	4,122,911	591,418	4,376,669	4.84%	6.15%
June	359,582	372,394	408,455	433,304	441,246	467,350	502,735	534,409	4,657,320				
July	398,688	369,712	428,111	416,684	457,958	467,298	568,397	529,547	5,186,867				
August	439,787	431,364	464,441	511,572	534,430	517,103	598,256	562,637	5,749,504				
September	368,174	273,730	424,622	434,331	439,577	464,046	480,972	518,839	6,268,343				
	4,537,204	4,580,292	5,001,366	5,235,113	5,642,575	5,849,188	6,038,902	6,268,343		3,376,669			