

CITY OF MOUNT PLEASANT, TX  
&  
REGIONAL  
SALES TAX & EMPLOYMENT  
MONTHLY UPDATE

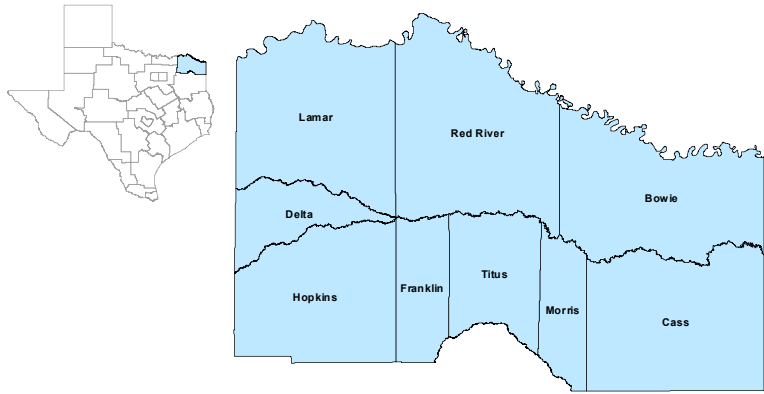


[www.mpedc.org](http://www.mpedc.org)

903.572.6602

Updated on: 01/21/2020

## North East Workforce Development Area



## November 2019

WDA Labor Force Statistics				
	Nov-19	Oct-19	Nov-18	Yearly Change
Civilian Labor Force	123,371	123,340	123,321	50
Employed	118,694	118,718	118,095	599
Unemployed	4,677	4,622	5,226	-549
Unemployment Rate	3.8%	3.7%	4.2%	-0.4%

Texas Labor Force Statistics				
	Nov-19	Oct-19	Nov-18	Yearly Change
Civilian Labor Force	14,265,562	14,190,783	13,961,940	303,622
Employed	13,788,541	13,723,103	13,475,980	312,561
Unemployed	477,021	467,680	485,960	-8,939
Unemployment Rate	3.3%	3.3%	3.5%	-0.2%

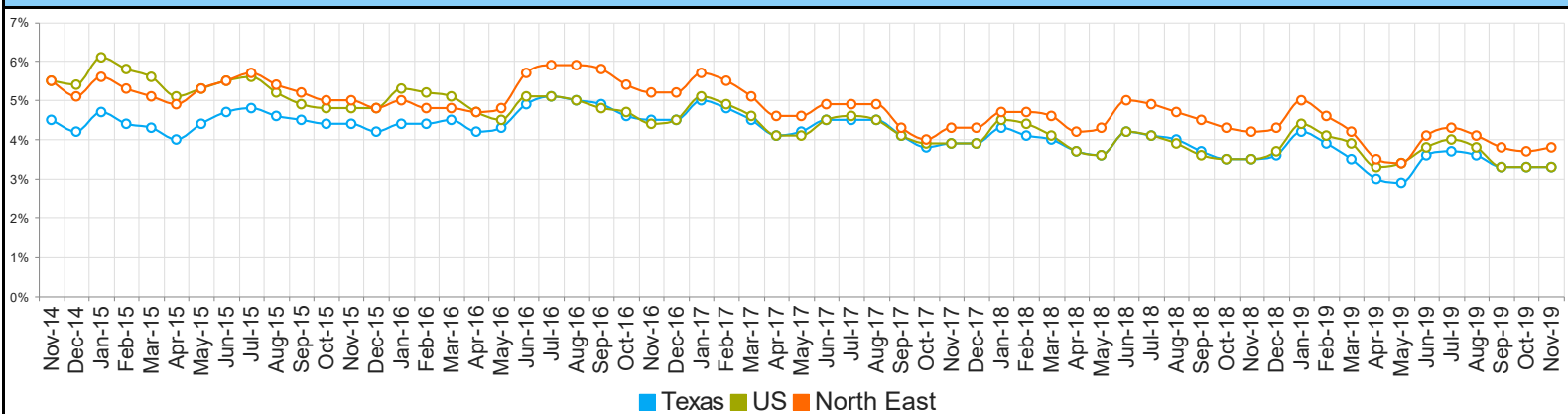
  

US Labor Force Statistics				
	Nov-19	Oct-19	Nov-18	Yearly Change
Civilian Labor Force	164,386,000	164,576,000	162,665,000	1,721,000
Employed	158,945,000	159,067,000	157,015,000	1,930,000
Unemployed	5,441,000	5,510,000	5,650,000	-209,000
Unemployment Rate	3.3%	3.3%	3.5%	-0.2%

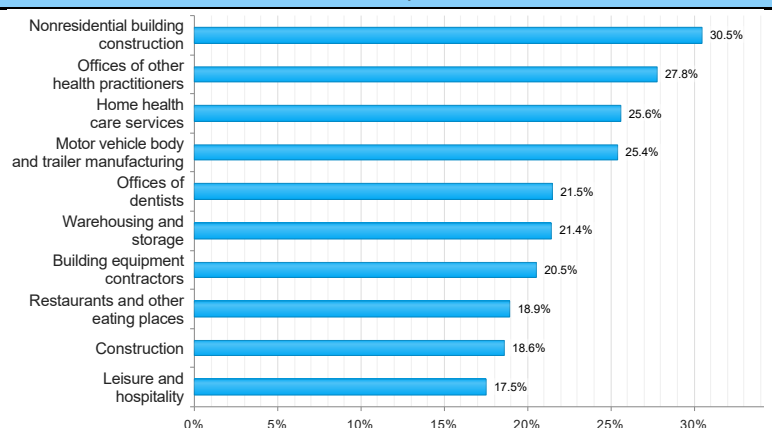
  

Continued Claims for the Week of the 12th				
	Nov-19	Oct-19	Nov-18	Yearly Change
WDA	809	803	888	-79
Texas	93,207	89,985	83,685	9,522

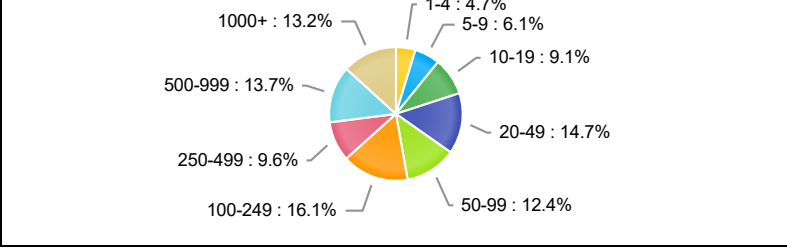
## Historical Unemployment Rates



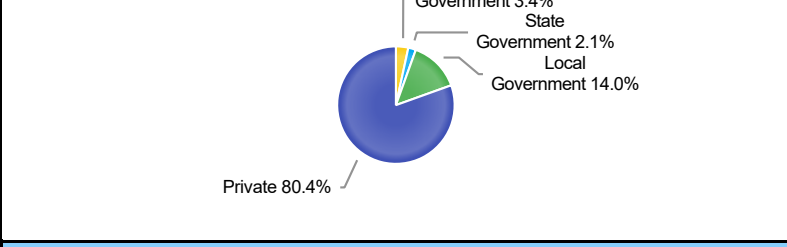
## Projected Top Ten Fastest Growing Industries in WDA (% Growth 2016-2026)



## Employment by Size Class (2nd Quarter 2019)



## Employment by Ownership (2nd Quarter 2019)



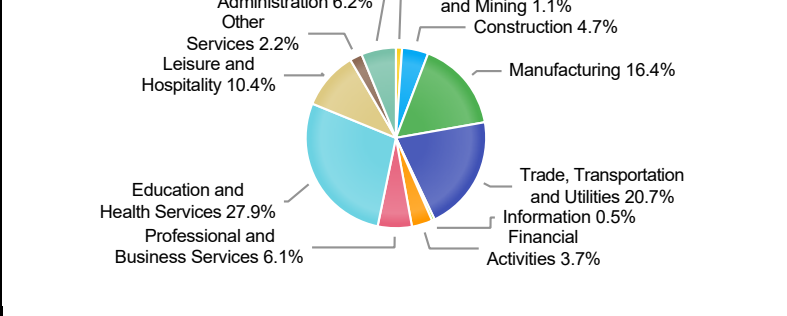
### Average Weekly Wage (2nd Quarter 2019)

	Q2 2019	Q1 2019	Q2 2018	Quarterly Change	Yearly Change
WDA	\$777	\$775	\$763	\$2	\$14
Texas	\$1,102	\$1,204	\$1,062	-\$102	\$40
US	\$1,095	\$1,184	\$1,055	-\$89	\$40

## Employment by Industry (2nd Quarter 2019, Percent Change)

Industry	Employment	% of Total	% Quarterly Change	% Yearly Change
Natural Resources and Mining	1,266	1.1%	0.7%	-4.0%
Construction	5,232	4.7%	5.3%	7.7%
Manufacturing	18,342	16.4%	0.9%	3.0%
Trade, Transportation and Utilities	23,188	20.7%	1.4%	0.7%
Information	610	0.5%	3.9%	-3.2%
Financial Activities	4,158	3.7%	0.7%	-3.0%
Professional and Business Services	6,789	6.1%	0.8%	4.1%
Education and Health Services	31,238	27.9%	0.8%	1.9%
Leisure and Hospitality	11,583	10.4%	5.8%	3.7%
Other Services	2,416	2.2%	3.6%	-1.1%
Public Administration	6,967	6.2%	-0.5%	-1.3%

## Employment by Industry (2nd Quarter 2019)



# CITY OF MOUNT PLEASANT, TX

## City Sales and Use Tax Comparison Summary

City	Net Payment This Period	Comparable Payment Prior Year	% of Change	Payment YTD	Prior Year Payment YTD	% of Change
Mount Pleasant	\$514,014.36	\$479,869.28	7.11%	\$514,014.36	\$479,869.28	7.11%
Daingerfield	\$34,762.48	\$34,702.95	0.17%	\$34,762.48	\$34,702.95	0.17%
Mount Vernon	\$65,258.31	\$65,877.21	-0.93%	\$65,258.31	\$65,877.21	-0.93%
Paris	\$677,387.30	\$640,216.62	5.80%	\$677,387.30	\$640,216.62	5.80%
Pittsburg	\$79,718.51	\$72,698.97	9.65%	\$79,718.51	\$72,698.97	9.65%
Sulphur Springs	\$507,780.15	\$539,174.56	-5.82%	\$507,780.15	\$539,174.56	-5.82%

## Mount Pleasant Monthly Employment, Labor, Unemployment, & Unemployment Rate

Month	Labor Force	Employment	Unemployment	Unemployment Rate
January 2019	12860	12185	675	5.2
February 2019	12918	12325	593	4.6
March 2019	12983	12403	580	4.5
April 2019	12815	12353	462	3.6
May 2019	12722	12263	459	3.6
June 2019	12737	12171	566	4.4
July 2019	12730	12135	595	4.7
August 2019	12622	12073	549	4.3
September 2019	12730	12227	503	4.0
October 2019	12615	12119	496	3.9
November 2019	12625(P)	12115(P)	510(P)	4.0(P)
December 2018	12,383	12,969	586	4.5

P: Preliminary

**TEXARKANA LAUS**

Area	Area Type	November-19				October-19				November-18			
		Labor Force	Employment	Unemployment	Rate	Labor Force	Employment	Unemployment	Rate	Labor Force	Employment	Unemployment	Rate
Bowie	County	39,912	38,292	1,620	4.1	39,747	38,093	1,654	4.2	40,136	38,169	1,967	4.9
Cass	County	12,533	12,020	513	4.1	12,583	12,088	495	3.9	12,276	11,716	560	4.6
Delta	County	2,455	2,371	84	3.4	2,463	2,382	81	3.3	2,466	2,393	73	3.0
Franklin	County	4,545	4,382	163	3.6	4,542	4,387	155	3.4	4,516	4,348	168	3.7
Hopkins	County	17,686	17,168	518	2.9	17,697	17,195	502	2.8	17,312	16,778	534	3.1
Lamar	County	23,919	23,122	797	3.3	23,995	23,226	769	3.2	24,128	23,307	821	3.4
Morris	County	4,759	4,518	241	5.1	4,762	4,517	245	5.1	4,741	4,459	282	5.9
Red River	County	4,937	4,706	231	4.7	4,936	4,711	225	4.6	5,010	4,761	249	5.0
Titus	County	12,625	12,115	510	4.0	12,615	12,119	496	3.9	12,736	12,164	572	4.5
Paris	City	11,506	11,094	412	3.6	11,537	11,144	393	3.4	11,622	11,183	439	3.8
Texarkana	City	15,669	14,989	680	4.3	15,594	14,911	683	4.4	15,708	14,941	767	4.9

Mount Pleasant is in the Texarkana LAUS area which encloses 9 counties (Bowie, Cass, Delta, Franklin, Hopkins, Lamar, Morris, Red River, Titus) and 2 cities (Paris and Texarkana TX).

- LAUS (Local Area Unemployment Statistics)
- WDA (Workforce Development Area)
- <http://netxworkforce.org>

**SALES TAX ANALYSIS**  
2019-2020

												Increase/ Decrease	Increase/ Decrease
Month	Fiscal Year	Fiscal Year	Fiscal Year	Fiscal Year	Fiscal Year	Fiscal Year	Fiscal Year	Fiscal Year		Fiscal Year		Monthly	YTD
	2011-2012	2012-2013	2013-2014	2014-2015	2015-2016	2016-2017	2017-2018	2018-2019	YTD	2019-2020	YTD		
October	330,006	356,803	466,718	390,863	427,503	468,023	452,936	469,460	469,460	527,009	527,009	12.25%	12.26%
November	393,294	415,027	399,865	452,369	483,487	537,694	503,890	538,937	1,008,397	566,266	1,093,275	5.07%	8.42%
December	331,399	301,351	358,657	415,535	449,230	450,032	436,514	486,070	1,494,467	528,108	1,621,383	8.64%	8.49%
January	343,489	372,476	361,388	408,005	449,471	452,418	479,294	479,869	1,974,336	514,014	2,135,397	7.11%	8.16%
February	458,539	493,674	494,252	511,382	592,475	563,845	566,236	577,354	2,551,690				
March	304,586	338,086	348,463	367,865	380,986	427,259	461,022	458,329	3,010,019				
April	344,144	400,579	380,928	397,999	440,156	457,790	430,902	514,474	3,524,493				
May	465,515	455,095	465,468	495,205	546,057	576,330	557,748	598,418	4,122,911				
June	359,582	372,394	408,455	433,304	441,246	467,350	502,735	534,409	4,657,320				
July	398,688	369,712	428,111	416,684	457,958	467,298	568,397	529,547	5,186,867				
August	439,787	431,364	464,441	511,572	534,430	517,103	598,256	562,637	5,749,504				
September	368,174	273,730	424,622	434,331	439,577	464,046	480,972	518,839	6,268,343				
	4,537,204	4,580,292	5,001,366	5,235,113	5,642,575	5,849,188	6,038,902	6,268,343		2,135,397			