

CITY OF MOUNT PLEASANT, TX  
&  
REGIONAL  
SALES TAX & EMPLOYMENT  
MONTHLY UPDATE

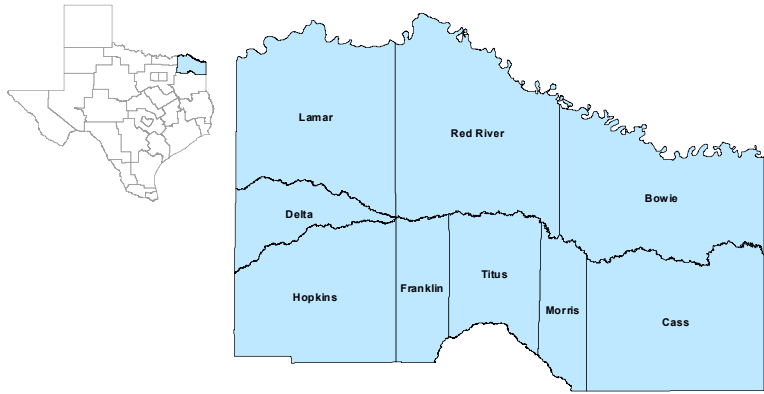


[www.mpedc.org](http://www.mpedc.org)

903.572.6602

Updated on: 02/19/2020

## North East Workforce Development Area



## December 2019

WDA Labor Force Statistics				
	Dec-19	Nov-19	Dec-18	Yearly Change
Civilian Labor Force	122,805	123,338	123,170	-365
Employed	118,302	118,662	117,897	405
Unemployed	4,503	4,676	5,273	-770
Unemployment Rate	3.7%	3.8%	4.3%	-0.6%

Texas Labor Force Statistics				
	Dec-19	Nov-19	Dec-18	Yearly Change
Civilian Labor Force	14,228,471	14,264,714	13,975,415	253,056
Employed	13,758,042	13,787,798	13,473,628	284,414
Unemployed	470,429	476,916	501,787	-31,358
Unemployment Rate	3.3%	3.3%	3.6%	-0.3%

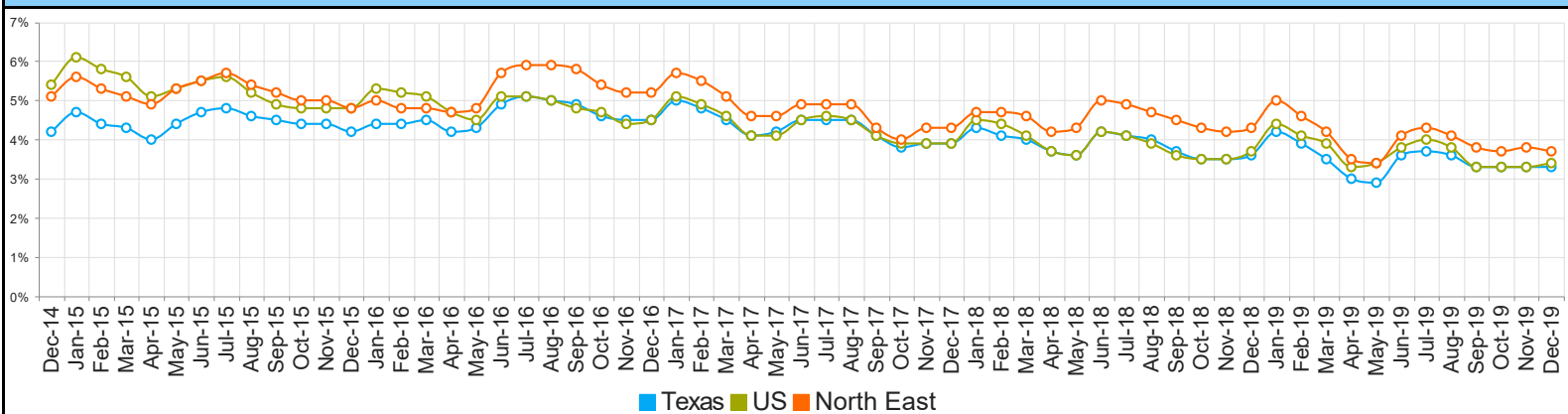
  

US Labor Force Statistics				
	Dec-19	Nov-19	Dec-18	Yearly Change
Civilian Labor Force	164,007,000	164,386,000	162,510,000	1,497,000
Employed	158,504,000	158,945,000	156,481,000	2,023,000
Unemployed	5,503,000	5,441,000	6,029,000	-526,000
Unemployment Rate	3.4%	3.3%	3.7%	-0.3%

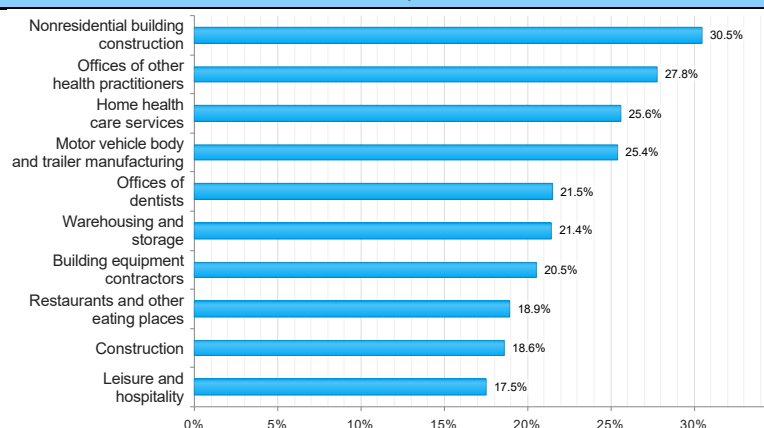
  

Continued Claims for the Week of the 12th				
	Dec-19	Nov-19	Dec-18	Yearly Change
WDA	830	810	850	-20
Texas	101,789	93,700	89,560	12,229

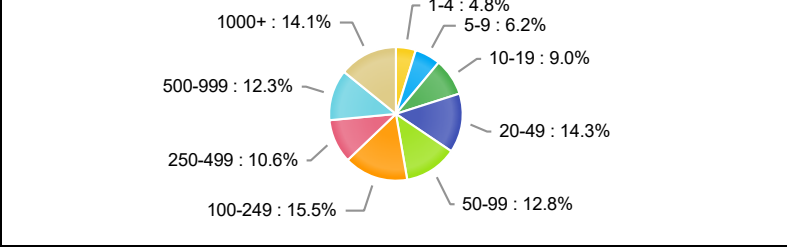
## Historical Unemployment Rates



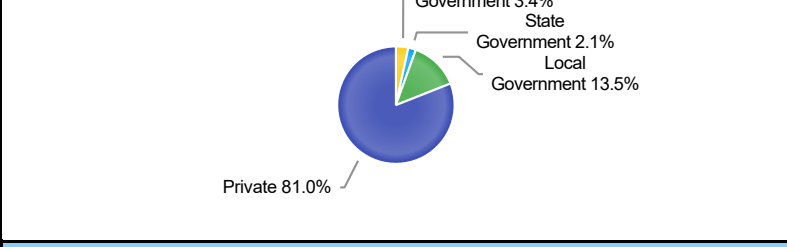
## Projected Top Ten Fastest Growing Industries in WDA (% Growth 2016-2026)



## Employment by Size Class (3rd Quarter 2019)



## Employment by Ownership (3rd Quarter 2019)



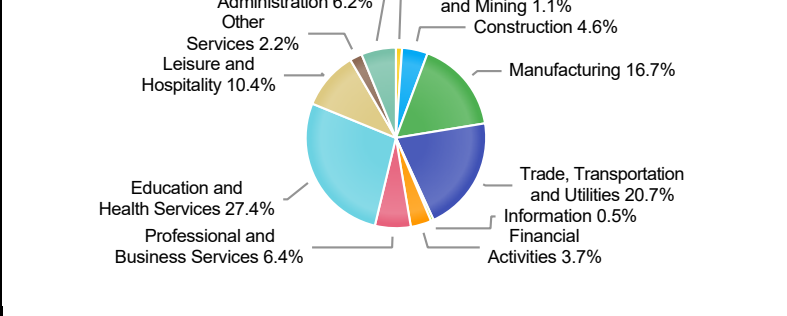
### Average Weekly Wage (3rd Quarter 2019)

	Q3 2019	Q2 2019	Q3 2018	Quarterly Change	Yearly Change
WDA	\$781	\$777	\$759	\$4	\$22
Texas	\$1,109	\$1,101	\$1,065	\$8	\$44
US	N/A	\$1,095	\$1,054	N/A	N/A

## Employment by Industry (3rd Quarter 2019, Percent Change)

Industry	Employment	% of Total	% Quarterly Change	% Yearly Change
Natural Resources and Mining	1,262	1.1%	-0.6%	-3.5%
Construction	5,131	4.6%	-1.9%	2.0%
Manufacturing	18,555	16.7%	1.2%	4.6%
Trade, Transportation and Utilities	23,076	20.7%	-0.6%	1.1%
Information	599	0.5%	-1.8%	-1.5%
Financial Activities	4,107	3.7%	-1.2%	-2.7%
Professional and Business Services	7,125	6.4%	5.4%	6.1%
Education and Health Services	30,579	27.4%	-2.0%	1.8%
Leisure and Hospitality	11,630	10.4%	0.2%	4.0%
Other Services	2,418	2.2%	0.0%	1.9%
Public Administration	6,946	6.2%	-0.2%	-0.4%

## Employment by Industry (3rd Quarter 2019)



\*The average weekly wage for U.S. for the latest quarter is not available. It will be updated shortly.

# CITY OF MOUNT PLEASANT, TX

## City Sales and Use Tax Comparison Summary

City	Net Payment This Period	Comparable Payment Prior Year	% of Change	Payment YTD	Prior Year Payment YTD	% of Change
Mount Pleasant	\$514,014.36	\$479,869.28	7.11%	\$514,014.36	\$479,869.28	7.11%
Daingerfield	\$42,764.34	\$39,807.70	7.42%	\$77,526.82	\$74,510.65	4.04%
Mount Vernon	\$81,762.68	\$80,676.76	1.34%	\$147,020.99	\$146,553.97	0.31%
Paris	\$955,061.32	\$905,507.75	5.47%	\$1,632,448.62	\$1,545,724.37	5.61%
Pittsburg	\$98,493.34	\$89,380.96	10.19%	\$178,211.85	\$162,079.93	9.95%
Sulphur Springs	\$638,725.71	\$604,034.02	5.74%	\$1,146,505.86	\$1,143,208.58	0.28%

## Mount Pleasant Monthly Employment, Labor, Unemployment, & Unemployment Rate

Month	Labor Force	Employment	Unemployment	Unemployment Rate
January 2019	12860	12185	675	5.2
February 2019	12918	12325	593	4.6
March 2019	12983	12403	580	4.5
April 2019	12815	12353	462	3.6
May 2019	12722	12263	459	3.6
June 2019	12737	12171	566	4.4
July 2019	12730	12135	595	4.7
August 2019	12622	12073	549	4.3
September 2019	12730	12227	503	4.0
October 2019	12615	12119	496	3.9
November 2019	12620	12111	509	4.0
December 2019	12621(P)	12113(P)	508(P)	4.0(P)

P: Preliminary

**TEXARKANA LAUS**

Area	Area Type	December-19				November-19				December-18			
		Labor Force	Employment	Unemployment	Rate	Labor Force	Employment	Unemployment	Rate	Labor Force	Employment	Unemployment	Rate
Bowie	County	39,662	38,133	1,529	3.9	39,903	38,283	1,620	4.1	40,011	38,064	1,947	4.9
Cass	County	12,467	11,969	498	4.0	12,532	12,016	516	4.1	12,290	11,717	573	4.7
Delta	County	2,444	2,364	80	3.3	2,455	2,371	84	3.4	2,459	2,376	83	3.4
Franklin	County	4,500	4,352	148	3.3	4,542	4,380	162	3.6	4,509	4,335	174	3.9
Hopkins	County	17,647	17,151	496	2.8	17,681	17,164	517	2.9	17,224	16,687	537	3.1
Lamar	County	23,791	23,035	756	3.2	23,912	23,115	797	3.3	24,144	23,297	847	3.5
Morris	County	4,745	4,483	262	5.5	4,758	4,517	241	5.1	4,724	4,444	280	5.9
Red River	County	4,928	4,702	226	4.6	4,935	4,705	230	4.7	5,017	4,764	253	5.0
Titus	County	12,621	12,113	508	4.0	12,620	12,111	509	4.0	12,792	12,213	579	4.5
Paris	City	11,446	11,052	394	3.4	11,501	11,090	411	3.6	11,611	11,178	433	3.7
Texarkana	City	15,553	14,927	626	4.0	15,667	14,986	681	4.3	15,646	14,900	746	4.8

Mount Pleasant is in the Texarkana LAUS area which encloses 9 counties (Bowie, Cass, Delta, Franklin, Hopkins, Lamar, Morris, Red River, Titus) and 2 cities (Paris and Texarkana TX).

- LAUS (Local Area Unemployment Statistics)
- WDA (Workforce Development Area)
- <http://netxworkforce.org>

**SALES TAX ANALYSIS**  
2019-2020

												Increase/ Decrease	Increase/ Decrease
Month	Fiscal Year	Fiscal Year	Fiscal Year	Fiscal Year	Fiscal Year	Fiscal Year	Fiscal Year	Fiscal Year		Fiscal Year		Monthly	YTD
	2011-2012	2012-2013	2013-2014	2014-2015	2015-2016	2016-2017	2017-2018	2018-2019	YTD	2019-2020	YTD		
October	330,006	356,803	466,718	390,863	427,503	468,023	452,936	469,460	469,460	527,009	527,009	12.25%	12.26%
November	393,294	415,027	399,865	452,369	483,487	537,694	503,890	538,937	1,008,397	566,266	1,093,275	5.07%	8.42%
December	331,399	301,351	358,657	415,535	449,230	450,032	436,514	486,070	1,494,467	528,108	1,621,383	8.64%	8.49%
January	343,489	372,476	361,388	408,005	449,471	452,418	479,294	479,869	1,974,336	514,014	2,135,397	7.11%	8.16%
February	458,539	493,674	494,252	511,382	592,475	563,845	566,236	577,354	2,551,690	646,021	2,781,418	11.89%	9.00%
March	304,586	338,086	348,463	367,865	380,986	427,259	461,022	458,329	3,010,019				
April	344,144	400,579	380,928	397,999	440,156	457,790	430,902	514,474	3,524,493				
May	465,515	455,095	465,468	495,205	546,057	576,330	557,748	598,418	4,122,911				
June	359,582	372,394	408,455	433,304	441,246	467,350	502,735	534,409	4,657,320				
July	398,688	369,712	428,111	416,684	457,958	467,298	568,397	529,547	5,186,867				
August	439,787	431,364	464,441	511,572	534,430	517,103	598,256	562,637	5,749,504				
September	368,174	273,730	424,622	434,331	439,577	464,046	480,972	518,839	6,268,343				
	4,537,204	4,580,292	5,001,366	5,235,113	5,642,575	5,849,188	6,038,902	6,268,343		2,781,418			