

CITY OF MOUNT PLEASANT, TX  
&  
REGIONAL  
SALES TAX & EMPLOYMENT  
MONTHLY UPDATE

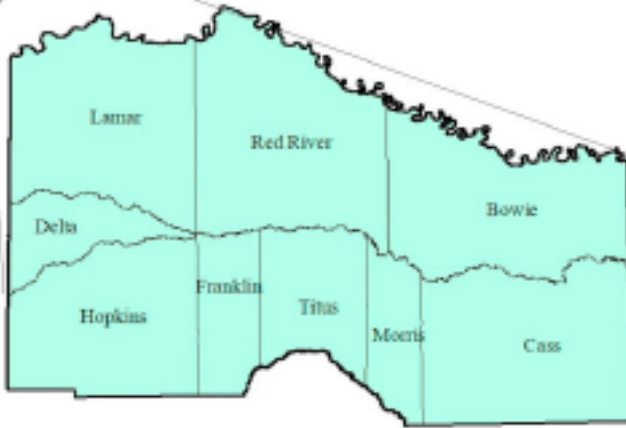


[www.mpedc.org](http://www.mpedc.org)

903.572.6602

# North East Texas Workforce Development Area

December 2018



## WDA Labor Force Statistics

	Dec-18	Nov-18	Dec-17	OTY
CLF	123,056	122,959	121,666	1,390
Employed	117,706	117,724	116,689	1,017
Unemployed	5,350	5,235	4,977	373
Rate	4.3%	4.3%	4.1%	0.2%

## Texas Labor Force Statistics

	Dec-18	Nov-18	Dec-17	OTY
CLF	13,976,348	13,937,051	13,598,061	378,287
Employed	13,471,690	13,454,512	13,096,216	375,474
Unemployed	504,658	482,539	501,845	2,813
Rate	3.6%	3.5%	3.7%	-0.1%

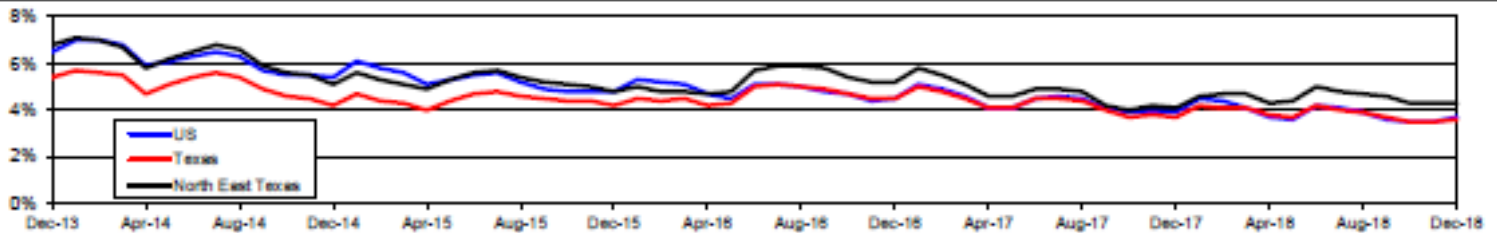
## US Labor Force Statistics

	Dec-18	Nov-18	Dec-17	OTY
CLF	162,510,000	162,665,000	159,880,000	2,630,000
Employed	156,481,000	157,015,000	153,602,000	2,879,000
Unemployed	6,029,000	5,650,000	6,278,000	-249,000
Rate	3.7%	3.5%	3.9%	-0.2%

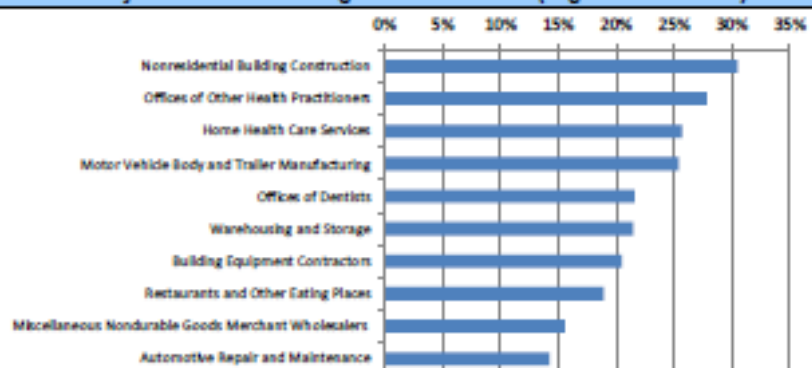
## Continued Claims for the Week of the 12th

	Dec-18	Nov-18	Dec-17	OTY
WDA	845	887	1,029	-184
Texas	88,997	83,207	108,432	-19,435

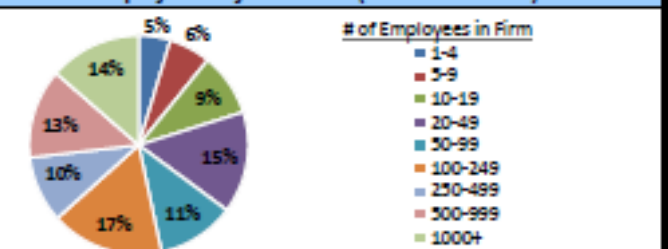
## Historical Unemployment Rates



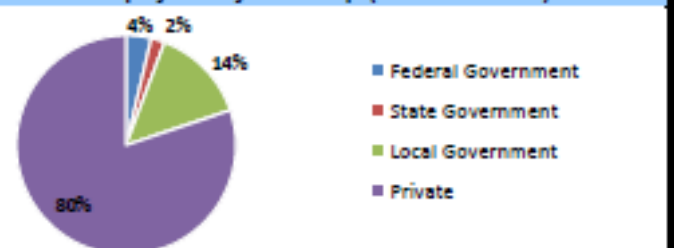
## Projected Fastest Growing Industries in WDA (% growth 2016-2026)



## Employment by Size Class (2nd Quarter 2018)



## Employment by Ownership (2nd Quarter 2018)



## Average Weekly Wage (2nd Quarter 2018)

	Q2 2018	Q1 2018	Q2 2017	Change	
				Quarter	Year
WDA	\$762	\$759	\$741	\$3	\$21
Texas	\$1,062	\$1,167	\$1,027	-\$105	\$36
US	\$1,055	\$1,152	\$1,020	-\$97	\$35

## Employment by Industry (2nd Quarter 2018, Percent Change)

Industry	Employment	% of total	% Change	
			Quarter	Year
Natural resources and mining	1,322	1.2%	-7.8%	-6.0%
Construction	4,837	4.4%	5.2%	-3.1%
Manufacturing	17,805	16.2%	1.1%	4.0%
Trade, transportation and utilities	22,964	20.9%	-0.1%	-1.1%
Information	667	0.6%	-5.3%	-7.5%
Financial activities	4,287	3.9%	0.1%	1.9%
Professional and business services	6,495	5.9%	0.8%	-2.6%
Education and health services	30,635	27.9%	0.3%	0.0%
Leisure and hospitality	11,117	10.1%	4.4%	1.0%
Other services	2,440	2.2%	2.6%	0.5%
Public administration	7,056	6.4%	-1.0%	-2.9%
<b>Total</b>	<b>109,625</b>	<b>100.0%</b>	<b>0.8%</b>	<b>0.0%</b>

## Employment by Industry (2nd Quarter 2018)



# CITY OF MOUNT PLEASANT, TX

## City Sales and Use Tax Comparison Summary

City	Net Payment This Period	Comparable Payment Prior Year	% of Change	Payment YTD	Prior Year Payment YTD	% of Change
Mount Pleasant	\$479,869.28	\$479,293.53	0.12%	\$479,869.28	\$479,293.53	0.12%
Daingerfield	\$34,702.95	\$36,175.21	-4.06%	\$34,702.95	\$36,175.21	-4.06%
Mount Vernon	\$65,877.21	\$65,408.24	0.71%	\$65,877.21	\$65,408.24	0.71%
Paris	\$640,216.62	\$696,600.40	-8.09%	\$640,216.62	\$696,600.40	-8.09%
Pittsburg	\$72,698.97	\$78,779.65	-7.71%	\$72,698.97	\$78,779.65	-7.71%
Sulphur Springs	\$539,174.56	\$476,754.22	13.09%	\$539,174.56	\$476,754.22	13.09%

## Mount Pleasant Monthly Employment, Labor, Unemployment, & Unemployment Rate

Month	Employment	Labor	Unemployment	Unemployment Rate
January	12,358	13,002	644	5
February	12,528	13,233	705	5.3
March	12,581	13,295	714	5.4
April	12,473	13,114	641	4.9
May	12,417	13,052	635	4.9
June	12,334	13,086	752	5.7
July	12,303	13,012	709	5.4
August	12,312	12,984	672	5.2
September	12,326	12,960	634	4.9
October	12,286	12,874	588	4.6
November	12,331	12,902	571	4.4
December	12,383	12,969	586	4.5

**SALES TAX ANALYSIS  
2018-2019**

											Increase/ Decrease	Increase/ Decrease
	Fiscal Year	Fiscal Year	Fiscal Year	Fiscal Year	Fiscal Year	Fiscal Year	Fiscal Year		Fiscal Year			
Month	2011-2012	2012-2013	2013- 2014	2014-2015	2015-2016	2016-2017	2017-2018	YTD	2018-2019	YTD	Monthly	YTD
October	330,006	356,803	466,718	390,863	427,503	468,023	452,936	452,936	469,460	469,460	3.65%	3.65%
November	393,294	415,027	399,865	452,369	483,487	537,694	503,890	956,826	538,937	1,008,397	6.96%	5.39%
December	331,399	301,351	358,657	415,535	449,230	457,362	436,514	1,393,340	486,070	1,494,467	11.35%	7.26%
January	343,489	372,476	361,388	408,005	449,471	452,418	479,294	1,872,634				
February	458,539	493,674	494,252	511,382	592,475	563,845	579,584	2,452,218				
March	304,586	338,086	348,463	367,865	380,986	427,259	461,022	2,913,239				
April	344,144	400,579	380,928	397,999	440,156	457,790	430,902	3,344,141				
May	465,515	455,095	465,468	495,205	546,057	576,330	557,748	3,901,889				
June	359,582	372,394	408,455	433,304	441,246	467,350	502,735	4,404,624				
July	398,688	369,712	428,111	416,684	457,958	467,298	568,397	4,973,021				
August	439,787	431,364	464,441	511,572	534,430	517,103	598,256	5,571,277				
September	368,174	273,730	424,622	434,331	439,577	464,046	480,972	6,052,249				
	4,537,204	4,580,292	5,001,366	5,235,113	5,642,575	5,856,518	6,052,249		1,494,467			

**TEXARKANA LAUS**

		December-18				November-18				December-17			
Area	Area Type	Labor Force	Employment	Unemployment	Rate	Labor Force	Employment	Unemployment	Rate	Labor Force	Employment	Unemployment	Rate
Bowie	County	40098	38124	1974	4.9	40190	38224	1966	4.9	39367	37806	1561	4
Cass	County	12228	11642	586	4.8	12193	11627	566	4.6	12081	11468	613	5.1
Delta	County	2412	2329	83	3.4	2423	2351	72	3	2590	2513	77	3
Franklin	County	4474	4300	174	3.9	4480	4314	166	3.7	4458	4282	176	3.9
Hopkins	County	17123	16582	541	3.2	17126	16594	532	3.1	16924	16401	523	3.1
Lamar	County	24082	23219	863	3.6	23980	23153	827	3.4	23586	22671	915	3.9
Morris	County	4497	4209	288	6.4	4519	4234	285	6.3	4520	4229	291	6.4
Red River	County	5173	4918	255	4.9	5146	4896	250	4.9	5233	4988	245	4.7
Titus	County	12969	12383	586	4.5	12902	12331	571	4.4	12907	12331	576	4.5
Paris	City	11626	11186	440	3.8	11598	11154	444	3.8	11397	10922	475	4.2
Texarkana	City	15846	15086	760	4.8	15896	15125	771	4.9	15567	14960	607	3.9

Mount Pleasant is in the Texarkana LAUS area which encloses 9 counties (Bowie, Cass, Delta, Franklin, Hopkins, Lamar, Morris, Red River, Titus) and 2 cities (Paris and Texarkana TX).

- \* LAUS (Local Area Unemployment Statistics)
- \* WDA (Workforce Development Area)